



# Liberia Coronavirus (COVID-19) Pandemic Situation report



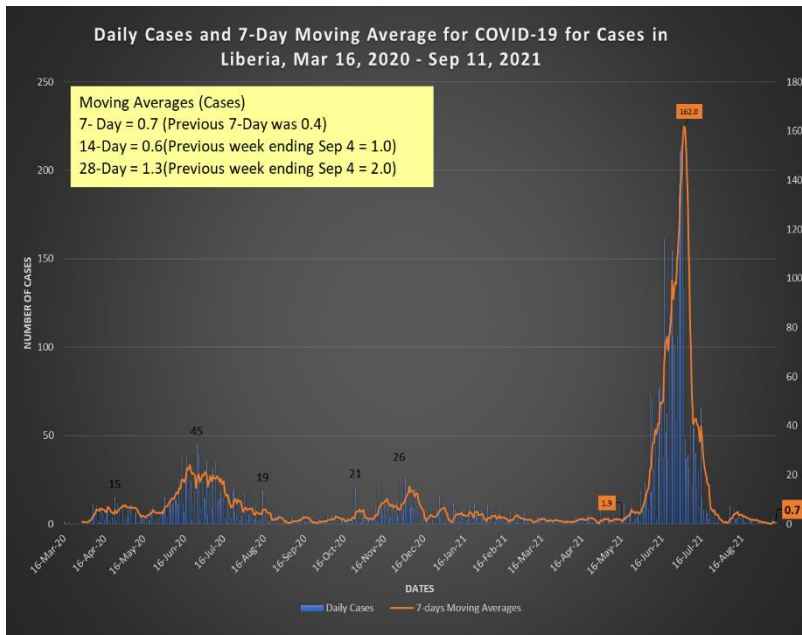
Weekly Situation Report: No. 546; Date of reporting: 12 Sept 2021

Outbreak start date: 16 March 2020  
Data Source: County Incident Management & Laboratory records

**ACTIVE CASES AT END OF WEEK: 49 WEEKLY DEATHS: 0**

<b>Confirmed cases this week: 29</b>	<b>Health worker infection this week: 00</b>	<b>Current admission: 12</b>	<b>Home based care: 35</b>	<b>Week Samples Tested: 4747</b>
--------------------------------------	--	------------------------------	----------------------------	----------------------------------

## Summary of Data Received from 15 counties and all COVID-19 testing sites as of, 12 Sept. 2021



**166,651** Cumulative Tests conducted



**5769** Cumulative Confirmed cases (3.46% positivity rate)



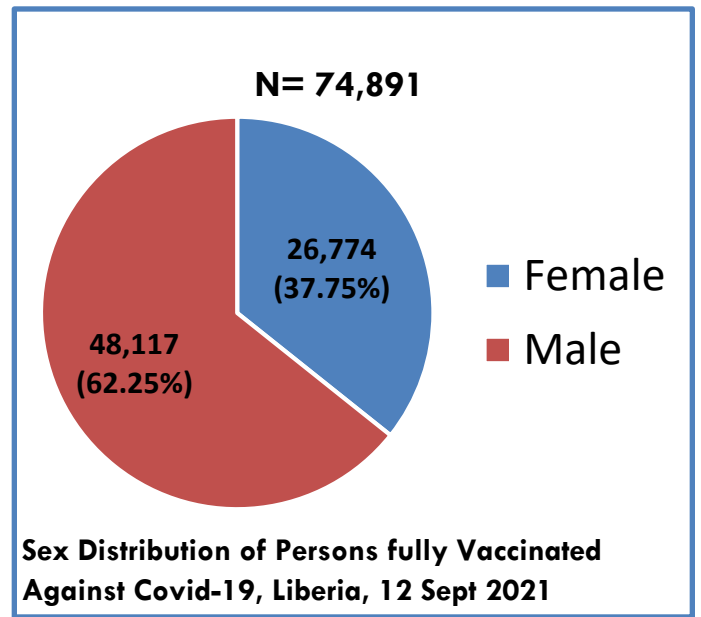
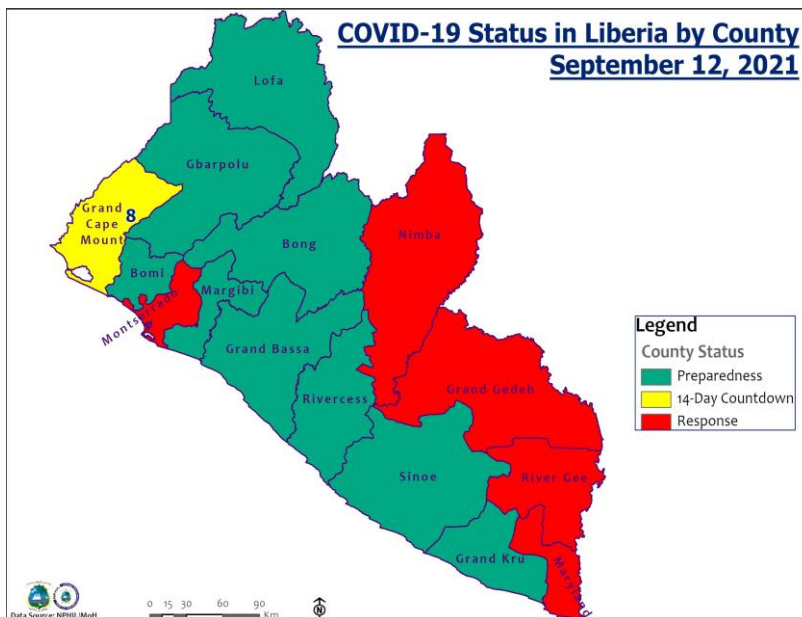
**283** Cumulative Deaths (4.9% CFR)- Increase due to July 2021, data hermonsation in Montserrado county.



**346** cumulative Health worker infections with 8 deaths



**5437** Cumulative Recoveries



All the 15 counties are currently conducting COVID-19 vaccination. A total of 51,538 people have been vaccinated with J&J vaccine and 23,358 with AstraZeneca vaccine as of 12 September 2021. Cumulatively 74,891 people are fully vaccinated, which is 3.0% of the national target (and 1.6% of the total country population). A total of 602,400 doses in country can vaccinate 13.25% of the country total population. In order to vaccinate 40% of the population by the end of 2021, an additional 1,219,608 vaccine doses are required.

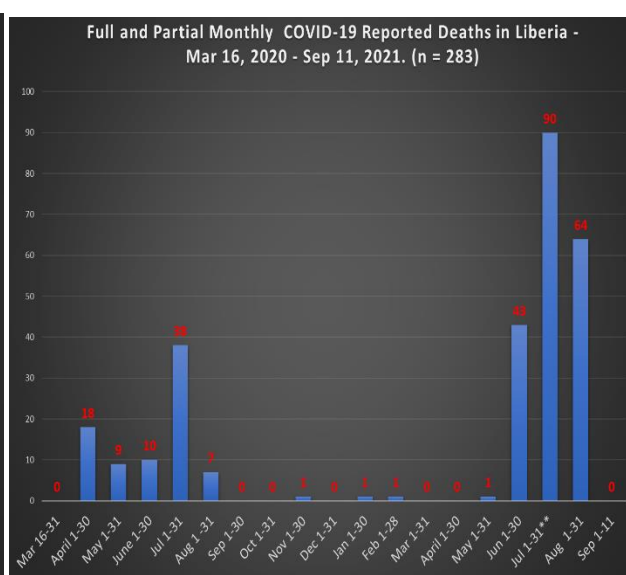
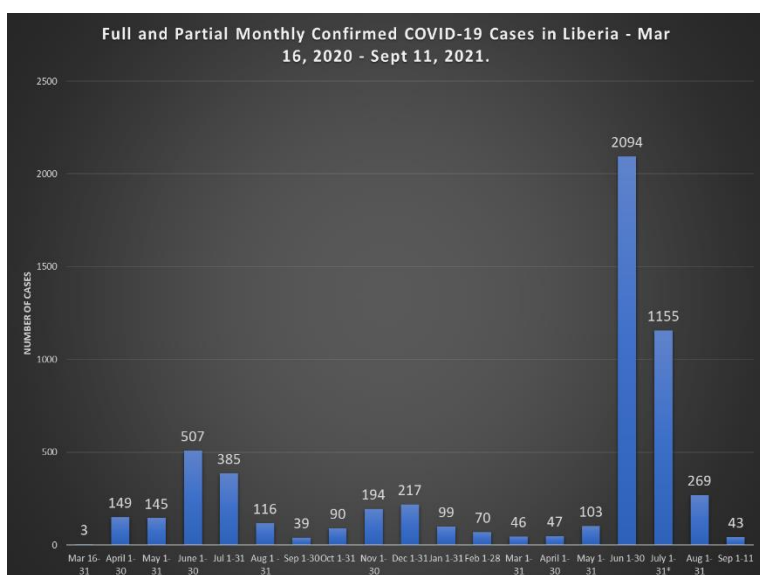
# Public Health Actions/Response Interventions:

## Surveillance

**Table 2: Summary of confirmed, recovered, active, and dead cases by reporting counties, Liberia, 16 March 2020 – 12 September 2021**

County	Confirmed Cases		Recovered Cases		Active Cases	Dead Cases	
	New	Cum	New	Cum		New	Cum
Bomi	0	61	0	59	0	0	2
Bong	0	114	0	98	0	0	16
Gbarpolu	0	39	0	37	0	0	2
Grand Bassa	0	95	0	89	0	0	6
Grand Cape Mount	0	57	0	57	0	0	0
Grand Gedeh	0	31	0	29	2	0	0
Grand Kru	0	26	0	26	0	0	0
Lofa	0	164	0	129	0	0	35
Margibi	0	201	0	194	0	0	7
Maryland	0	162	0	141	10	0	11
Montserrado	0	4539	5	4370	4	0	165
Nimba	0	183	0	131	19	0	33
Rivercess	0	16	0	13	0	0	3
River Gee	8	69	0	54	14	0	1
Sinoe	0	12	0	10	0	0	2
<b>National</b>	<b>8</b>	<b>5769</b>	<b>5</b>	<b>5437</b>	<b>49</b>	<b>0</b>	<b>283</b>

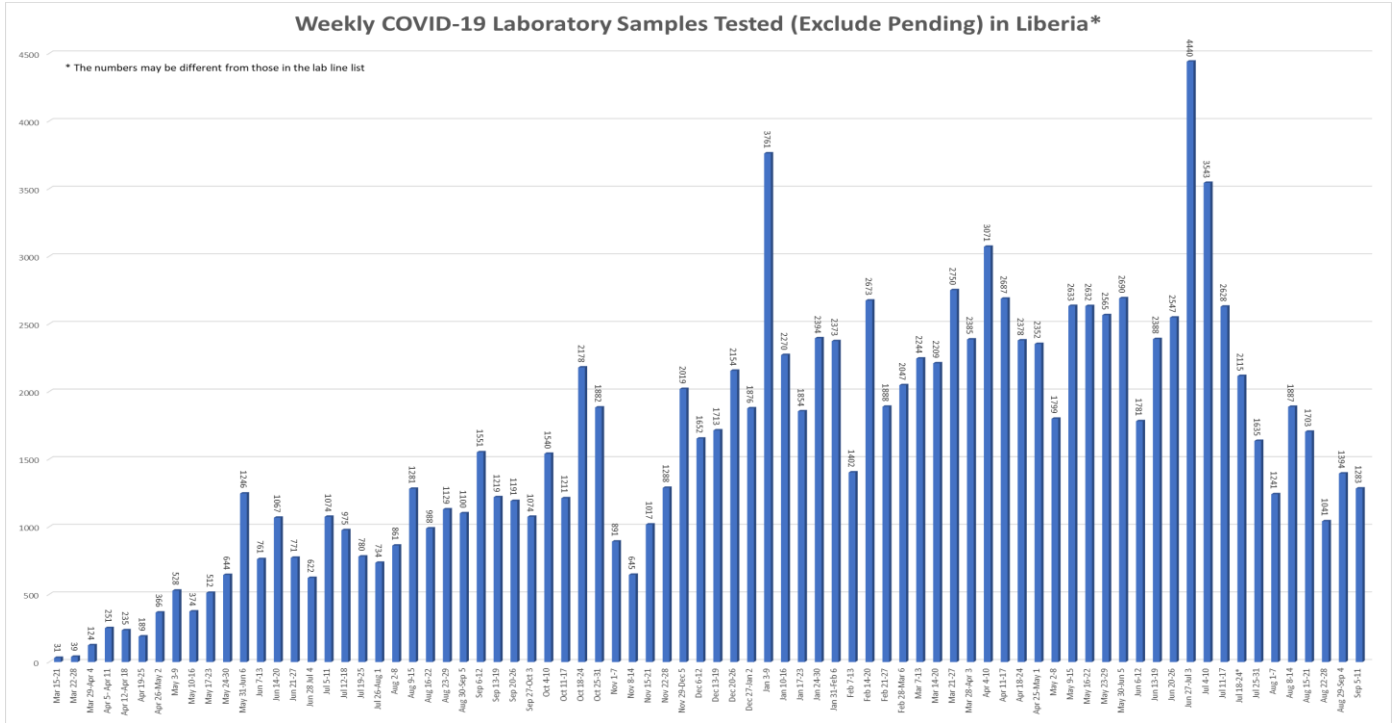
- In the last 7 days, there was 4747 tests conducted with 29 new confirmed cases (weekly positivity rate of 0.58%) compared to 55 cases recorded the previous week. No death has been recorded in the last 2 weeks.
- There are 49 active cases and 157 contacts under follow up. The confirmed cases were recorded from River Gee (14), Nimba (08) and Montserrado (06) counties.



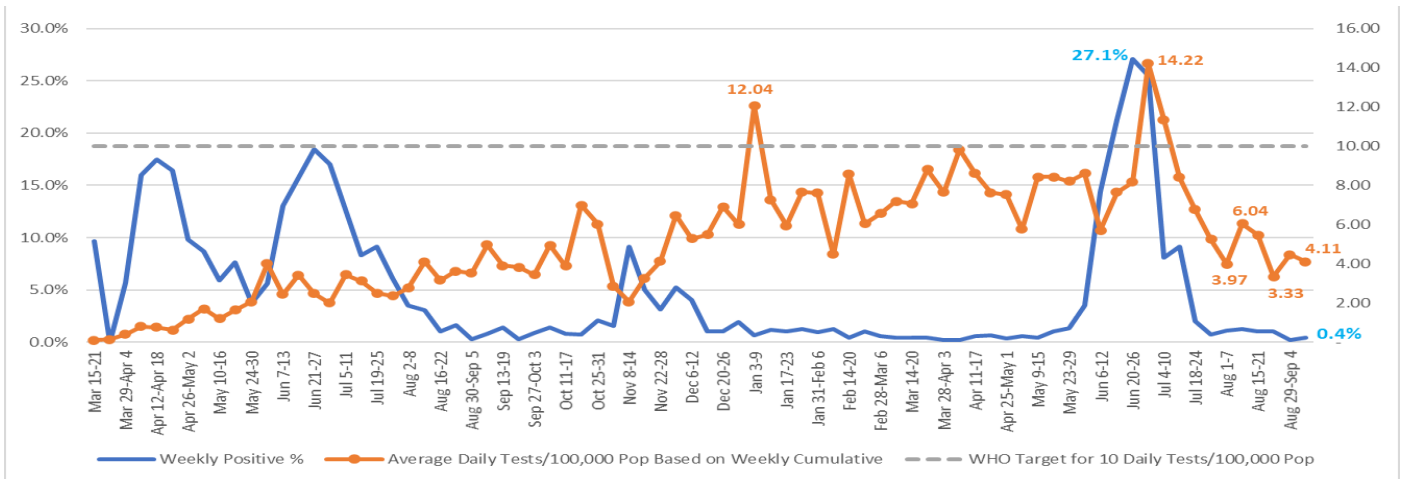
- Six (05)** counties are in response phase (Montserrado, Nimba, River Gee, Maryland and Grand Gedeh while Grand Cape Mount, Lofa, Margibi, Grand Kru, Bong, Bomi, Gbarpolu, Rivercess, Grand Bassa and Sinoe) are in preparedness phase.

# Laboratory

- In the last 7 days, there was 4747 tests conducted with 29 new confirmed cases a weekly positivity rate of 0.58%.



- During the reporting 4.1 tests per 100,000 population were conducted compared to 4.7 tests/100,000 population conducted the previous week. The country is working on increasing the daily tests to above 10 per 100,000 population weekly and eventually per day for this indicator.

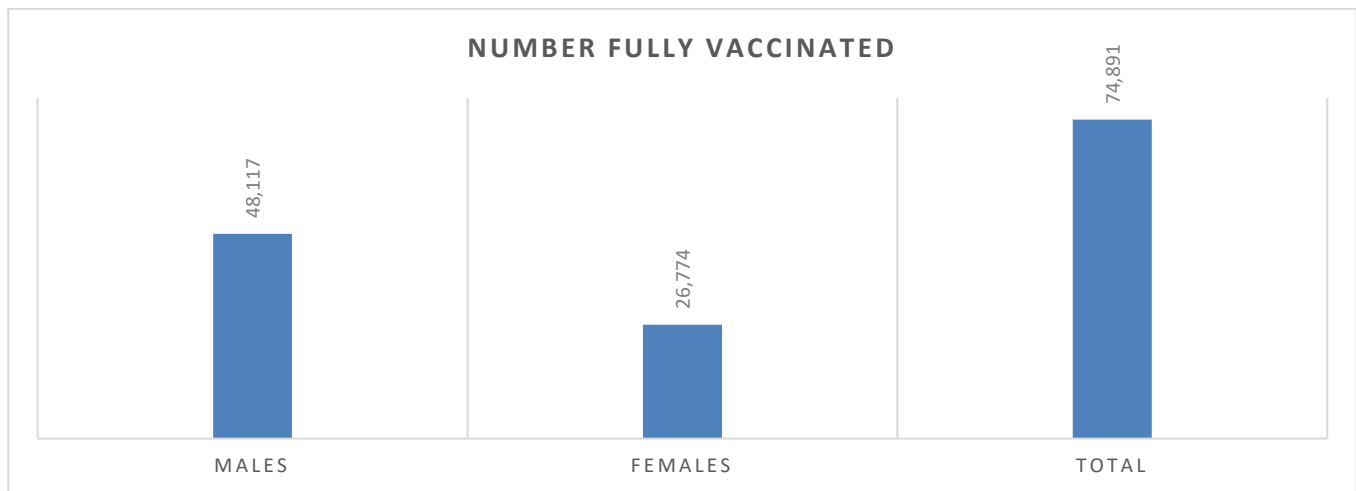


**Distribution of weekly tests/100,000 population, positivity rate against the WHO target, Liberia, Mar 16, 2020-Sept 12, 2021**

- The country is using RT-PCR and Antigen based RDTs to test for COVID-19;
- Both Delta and Alpha variants have been confirmed through genomic sequencing. Plan for periodic sequencing is on course.

## COVID-19 Vaccination

- A total of 51,538 people have been vaccinated with J&J vaccine and 23,358 with AstraZeneca vaccine as of 12 September 2021. All the 15 counties are currently conducting vaccination.
- Cumulatively 74,891 fully vaccinated, which is 3.0% of the national target (but 1.6% of the total population that is fully vaccinated)
- A total of 16 AEFI have been reported since the start of the J&J vaccination exercise this week. Cumulatively six (22) AEFI have been reported since the start of the J&J vaccination exercise. Serious AEFI (01) and non serious (21).



### *Gender distribution of fully vaccinated population (J&J and AstraZeneca Vaccines)*

A total of 602,400 doses in country can vaccinate 13.25% of the country total population. In order to vaccinate 40% of the population by the end of 2021, an additional 1,219,608 vaccine doses are required.

The country is strengthening the uptake of COVID-19 vaccines to increase coverage to meet the 10% of the population vaccinated by the end of September 2021.

USAID supported Montserrat County Health Team with facilitation to deploy additional vaccination teams that led to increase in number of people vaccinated in Montserrat county.

## Case management

- There are currently 49 active cases of which 12 are at the treatment units (10 in Maryland, 02 in Grand Gedeh and No case at Star Base-Montserrat county, while 35 patients are under home based care across the country.
- In the last 14 days, no death ~~in confirmed cases have been~~ recorded in the country.
- Continue engagement and support for the increase quantity and quality of oxygen produced is ongoing. WHO is supporting the process.
- UNICEF has procured 20 Oxygen concentrators which will be handed over to the Ministry of Health to support COVID-19 case management.

## **Risk communication and community engagement**

- WHO and other partners are supporting community engagement and mobilization for COVID-19 vaccination uptake.
- WHO is supporting a live radio COVID-19 program to manage misinformation/infodemic and enhance awareness of the general public on the extent and scope of the response with emphasis on sustaining the preventive measures.

## **Infection Prevention and Control**

- The county health IPC teams are conducting Health facilities and health Care Workers risk assessments health workers across the country to address the risk of COVID-19 infection.

## **Continuity of essential health services**

- Health facilities continue to provide routine health services across the 15 counties of Liberia. WHO Country office, field teams and partners continue to provide technical support for Essential Health Services provision in the country including Routine Immunization and AFP surveillance activities.
- Revision and development of new national health policy and strategic plans (EPHS, National financing strategy, National Health Quality Strategy, among others) is ongoing with technical and financial support from WHO is ongoing

## **Preparedness and Response to other Epidemic prone diseases and conditions**

- WHO AFRO and WHO Liberia Country Office supported the training of 40 national surveillance officers on the Epidemic Intelligence from Open Sources platform under one health approach in an attempt to strengthen Event Based Surveillance for the timely detection, investigation and response to epidemic prone diseases, conditions and other hazards.
- Cumulative seven (07) alerts reported from 4 counties for Marburg/Ebola tested negative for Marburg, Ebola and Lassa fever
- Results from the Presumptive Yellow fever samples sent to Institute Pasteur Dakar Senegal were received as Negative for Yellow Fever.
- EVD vaccination started vaccination is to start in three major counties by the end of September 2021
- Rapid Response Team continued to demonstrate skills learned during the just ended RRT training by reporting and investigating priority disease alerts among other roles.
- Port of Entry (POE) training is pending for next week for seven border counties (Lofa, Bong, Nimba, Grand Gedeh and Maryland)

## **Situation context**

- Liberia reported its first confirmed case of the COVID-19 on 16 March 2020 in Monrovia, the country's capital. The COVID-19 outbreak has been evolving in the country with fluctuation in the numbers of new cases being reported, although disproportionately between counties. Currently there are low numbers recorded daily.

- The cornerstone of the response in Liberia is to find, isolate, test and care for every case, and to trace and quarantine every contact. Additionally, communities need to adhere to physical distancing, with good personal hygiene practices and cough etiquette. As of 05 Sept 2021, the country had recorded five thousand seven hundred and sixty nine (5,769) confirmed cases of COVID-19, including two hundred eighty three (283) deaths (CFR=4.5%) with 346 HCWs infections.
- Montserrado County the epi center of the pandemic in the country has reported the majority 4539 (78.9%) confirmed cases including 165 deaths while the rest of the confirmed cases reported from; Margibi (201); Lofa (164); Maryland (162); Nimba (183); Bong (114); Grand Bassa (95), River Gee (69); Bomi (61); Grand Cape Mount (57); Gbarpolu (39); Grand Gedeh (31); Grand Kru (26); Rivercess (16); Sinoe (12).

## Challenges

- Increasing the uptake of COVID-19 vaccines to be able to meet the 10% population vaccinated by end of Sept 2021.
- Increasing the tests conducted compared to the 10/100,000 population daily/weekly and daily targets;
- Improving the oxygen production quantity and quality to meet the country needs for both COVID-19 case management and routine care in the country and maintenance of oxygen plants
- Sustaining the adherence of public health measures (use of masks, physical distancing and WASH facilities at school facilities);
- Lack of COVID-19 virus genome sequencing capacity in the country

## Next Steps/Recommendations

- Increasing COVID-19 vaccination coverage across all counties
- Increasing COVID-19 the testing through enhanced surveillance and testing along vaccination sites.
- Continue shipping positive samples for COVID-19 genomic sequencing while fastracking building the country capacity for COVID-19 virus genome sequencing.
- Advocacy for oxygen production capacity improvement (both quantity and quality) in preparation for a possible 4<sup>th</sup> wave.
- Continue epidemiological investigations to link all the reported confirmed cases and their close contacts;
- Strengthen preparedness for Epidemic prone diseases and conditions under IDSR.

### For more information, please contact;

---

Mr. Luke Bawo  
Epi-surveillance Pillar Lead  
National Incident Management System Email: [lukebawo@gmail.com](mailto:lukebawo@gmail.com)  
Phone: +231 77793 2220;

**Hon. Dr. Wilhelmina Jallah**  
Incident Manager, Minister of Health  
Email: [wjallah@gmail.com](mailto:wjallah@gmail.com)

**Dr Yoti Zabulon (WR-ai)/Dr Peter Clement**  
Country Representative- World Health Organization;  
Liberia  
Email: [clementp@who.int](mailto:clementp@who.int)

---