

South Sudan

Integrated Disease surveillance and response (IDSR)

Epidemiological Bulletin Week 30, 2021 (July 26- August 01)





- Hepatitis E virus case surge reported in Bentiu IDP settlement since week 19, 2021.
- A Guinea worm case has been confirmed in Uror county, Jonglei State.
- Two (2) suspect yellow fever cases in Ikotos from Huma and Ngaluma boma. Sample testing underway in the National Public Health Laboratory.
- In week 30, IDSR reporting timeliness was 77% and completeness was 87% while timeliness was 84% and completeness 86% for EWARN sites.
- Of the 92 alerts in week 30; 82% were verified with malaria (32), AWD (20), ARI (12) and ABD (16) were the most frequent alerts.
- Malaria remains the top cause of morbidity and accounted for 89,671 cases (65.2% of OPD cases).
- Of the 2,925 COVID-19 alerts detected, 2,797 (95.6%) have been verified with 11,063 confirmed cases and 120 deaths (CFR of 1.08%).
- Other hazards include floods (unseasonal) in over 3 counties; Ongoing Hepatitis-E in Bentiu IDP Site

SURVEILLANCE PERFORMANCE



For the Integrated Disease Surveillance (IDSR)
network and Early warning alert and response
network (EWARN)



IDSR timeliness performance at State level for week 30 & 29 of 2021



Completeness States Ranking	States	Number of reporting sites	No. of HFs Reported on Time in WK 30	Timeliness Percentage of WK 30	No. of HFs Reported on Time in WK 29	Timeliness Percentage of WK 29
1st	WES	213	213	100%	213	100%
2nd	NBGZ	115	108	94%	115	100%
3rd	WBGZ	78	69	88%	70	90%
4th	Jonglei	107	87	81%	91	85%
5th	Lakes	113	90	80%	107	95%
6th	CES	117	85	73%	84	72%
7th	Unity	94	63	67%	62	66%
8th	Upper Nile	112	74	66%	72	64%
9th	Warrap	123	78	63%	87	71%
10th	EES	142	73	51%	87	61%
	South Sudan	1214	940	77%	988	81%

KEY

	<60%	Poor
	61%-79%	Fair
	80%-99%	Good
	100%	Excellent

The timeliness of IDSR reporting (supported by EWARS mobile) at health facility level in week 30 was 77% compared to 81% in week 29. 5 states were above the target of 80%

Reporting challenges: Insecurity, internet access and new partners

IDSR completeness performance at State level for week 30 & 29 of 2021



Completeness States Ranking	States	Number of reporting sites	No. of HFs Reported regardless of time in WK 30	Completeness Percentage of WK 30	No. of HFs Reported regardless of time in WK 29	Completeness Percentage of WK 29
1st	WES	213	213	100%	213	100%
2nd	NBGZ	115	114	99%	115	100%
3rd	Lakes	113	111	98%	110	97%
4th	WBGZ	78	76	97%	75	96%
5th	Jonglei	107	96	90%	95	89%
6th	Unity	94	83	88%	67	71%
7th	CES	117	92	79%	95	81%
8th	EES	142	111	78%	123	87%
9th	Upper Nile	112	85	76%	83	74%
10th	Warrap	123	79	64%	110	89%
	South Sudan	1214	1060	87%	1086	89%

KEY

	<60%	Poor
	61%-79%	Fair
	80%-99%	Good
	100%	Excellent

The completeness of IDSR reporting (supported by EWARS mobile) at health facility level was 87% in week 30 compared to 89% in week 29. 6 states were above the target of 80%



Surveillance: EWARS timeliness performance indicator by partner for week 30 and 29 of 2021

Partner	HF's	Reporting	Performance		
PARTER	Number of reporting sites	# of reports received regardless of Time in Week 30	Completeness of Week 30	# of reports received regardless of Time in Week 29	Completeness of Week 29
World Relief	2	2	100%	2	100%
ALIMA	3	3	100%	3	100%
CMD	1	1	100%	1	100%
IHO	2	2	100%	2	100%
IRC	1	1	100%	1	100%
SSHCO	1	1	100%	1	100%
IOM	12	12	100%	12	100%
RHS	1	1	100%	1	100%
TADO	4	4	100%	4	100%
UNH	2	2	100%	2	100%
MSF-E	6	6	100%	4	67%
UNIDOR	2	2	100%	0	0%
HFD	6	5	83%	5	83%
IMC	24	18	75%	23	96%
HFO	3	2	67%	2	67%
TRI-SS	2	1	50%	1	50%
MSF-H	7	3	43%	0	0%
TOTAL	79	66	84%	64	81%

Timeliness for EWARS partners supported sites were at 84% in week 30, 2021 compared to 81% at week 29, 2021



Surveillance: EWARS completeness performance indicator by partner for week 30 and 29 of 2021

Partner	HF's	Reporting	Performance		
PARTER	Number of reporting sites	# of reports received regardless of Time in Week 30	Completeness of Week 30	# of reports received regardless of Time in Week 29	Completeness of Week 29
World Relief	2	2	100%	2	100%
ALIMA	3	3	100%	3	100%
CMD	1	1	100%	1	100%
IHO	2	2	100%	2	100%
IRC	1	1	100%	1	100%
IOM	12	12	100%	12	100%
RHS	1	1	100%	1	100%
MSF-E	6	6	100%	6	100%
UNIDOR	2	2	100%	2	100%
TADO	4	4	100%	4	100%
UNH	4	4	100%	2	50%
SSHCO	1	1	100%	0	0%
HFD	6	5	83%	6	100%
IMC	24	18	75%	23	96%
MSF-H	7	5	71%	3	43%
HFO	3	2	67%	3	100%
TRI-SS	2	1	50%	2	100%
TOTAL	81	70	86%	73	90%

Completeness for EWARS partners supported sites was at 86% in week 30, 2021 compared to 90% at week 29, 2021

EVENT-BASED SURVEILLANCE



Alert management including detection; reporting;
verification; risk assessment; & risk
characterization





State	Acute jaundice syndrome	Acute Respiratory Infections (ARI)	Acute Watery Diarrhoea	Bloody Diarrhoea	Malaria	Guinea Worm	Covid-19	Total alerts
CES	1		3	2	2			8
EES		1	4	3	2	1		11
Jonglei							1	1
Lakes		4	3	1	3			11
Unity	2	3		2	2		2	11
Upper Nile		3	1	3	5			12
Warrap	1		3	2	3		2	11
WBGZ			5		4	2		11
WES		1	1	3	11			16
Total alerts	4	12	20	16	32	3	5	92

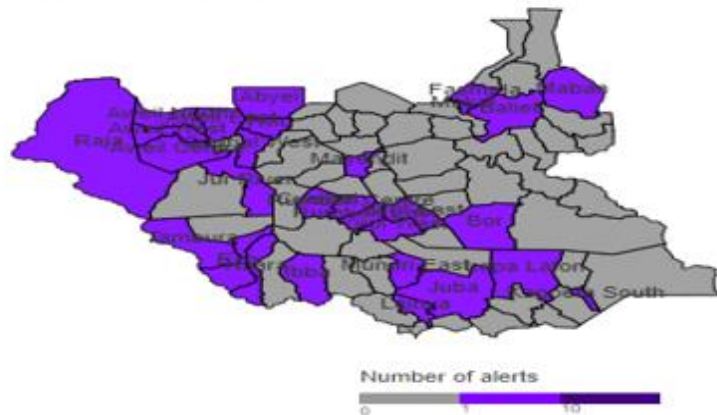
During this week:

- **12 ARI alert:** 1 from EES, 3 from Unity State, 3 from Upper Nile state, 4 from Lakes State, 1 from WES
- **20 AWD alert:** 3 from CES, 4 from EES, treated for diarrhea, 3 from Lakes treated as normal diarrhea, 1 from Upper Nile State, 3 from Warrap treated as normal diarrhea, 5 WBGZ State treated for diarrhea, 1 from WES
- **16 ABD alert:** 2 from CES, 3 from EES patients given treatment, 1 from Lake State, 2 from Unity investigation under way, 3 from Upper Nile, 2 from Warrap State, 3 from WES State.
- **32 Malaria alerts:** 2 from CES, 2 from EES, 3 from Lake State, 5 from Upper Nile State, 2 from Unity State, 3 from Warrap State, 4 from WBGZ, 11 from WES, all these are due to the high increase of malaria cases in the Country.
- **5 COVID-19 alert:** 1 from Jonglei state, Nyirol County, Lankien PHCC, 2 from Unity, Rubkona County, Bentiu PoC Hospital, 2 from Warrap state, Abyei County in Abyei PHCC
- **1 Guinea Worm alert:** 1 from EES, 1 from Lake State, 2 from WBG state, Jur River County, Roc Roc Dong PHCU and Akrok PHCU
- **4 AJS alert:** 1 from CES, Juba County, Kimu PHCC, 2 from Unity State, Mayom County, Mayom PHCC and Bentiu PoC Hospital and 1 from Warrap State

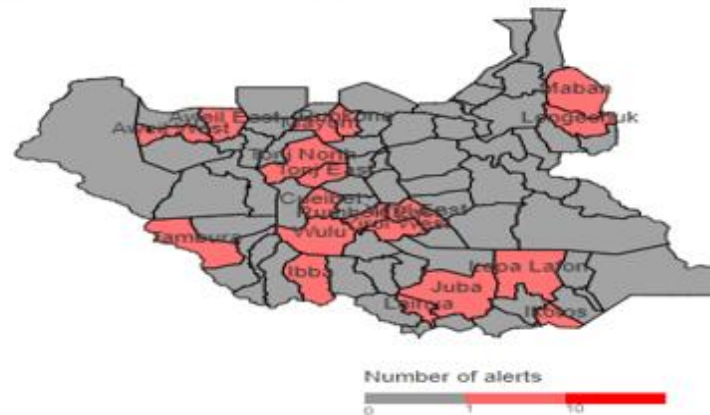
Alert: Map of key disease alerts by county of week 30 of 2021



Map 2a | Malaria (W30 2021)



Map 2b | Bloody diarrhoea (W30 2021)



Map 2e | Guinea Worm (W30 2021)



W30	Cumulative (2021)	
0	9	Low risk
8	8	Medium risk
0	51	High risk
0	145	Very high risk

81%	89%	% verified
0%	0%	% auto-discarded
0%	4%	% risk assessed
0%	3%	% requiring a response

SUSPECTED OUTBREAKS



Major suspected outbreaks in South Sudan in
2020



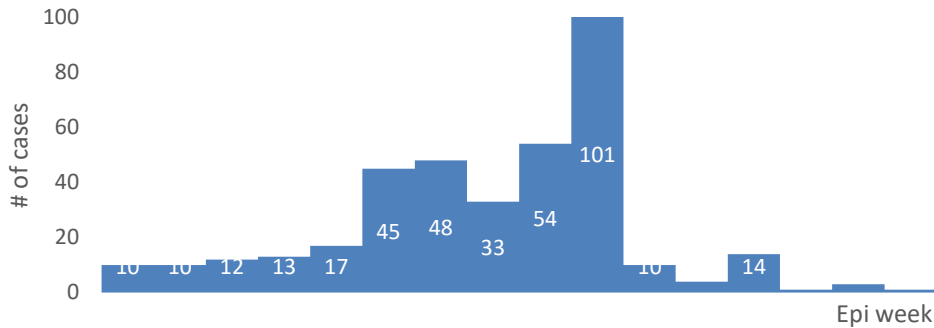


Malaria was the leading cause of morbidity and mortality, accounting for **62.9%** of all morbidities and **23.5%** of all Mortalities this week 21.

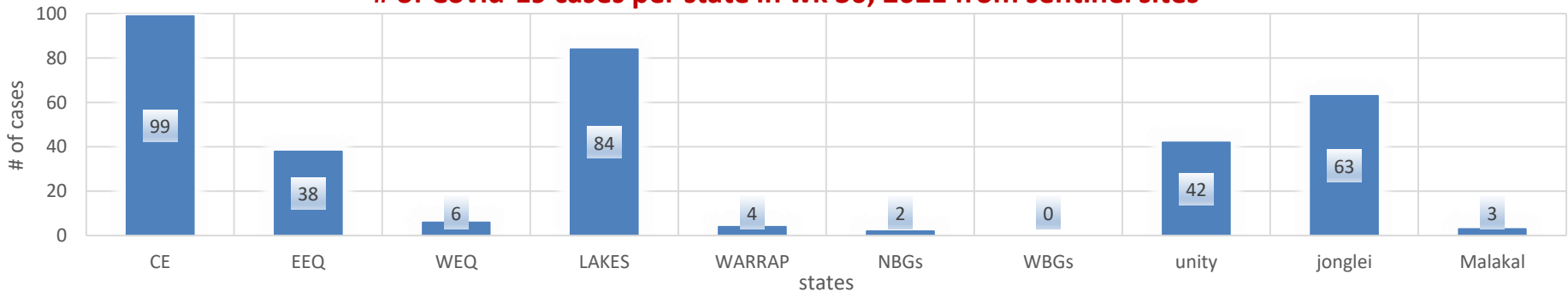
No counties with malaria trends which have exceeded the threshold (third quartile of trends for the period 2013-2017)

Routine Sentinel Surveillance | Human Influenza

Covid-19 total confirmed cases in South sudan from Sentinel sites wk1 to wk 30, 2021



of Covid-19 cases per state in wk 30, 2021 from sentinel sites



- As of 28th April 2021, a total of 138 samples were collected from three sentinel sites in Juba with 131 samples testing negative for influenza; one (1) positive for COVID-19; and six (6) positive for influenza B (with four (4) sub-typed as Victoria while the other two (2) are pending sub-typing)
- There are currently 13 Covid-19 designated sentinel surveillance sites in Juba and States Hospitals that are collecting epidemiological data and samples from Covid-19/ILI/SARI cases. A total of 7722 samples have been collected in 2021 with 549 (7.1%) being positive for COVID-19 from sentinel sites.

ACTIVE OUTBREAKS AND PUBLIC HEALTH EVENTS



Brief epidemiological description and public health response for active outbreaks and public health events`





Suspected Guinea worm case was reported from Kueldhol PHCC, Pieri payam, Uror county of Jonglei state on 23rd July, 2021. Samples were collected on 5th August, 201 from a 13yrs old female who was complaining from fever, itching and a wound on the left leg. Laboratory testing confirmed Guinea worm disease.

Response Interventions currently underway:

- Case sweep in the village(s) around the patient, her family, relatives, friends and farm area.
- Obtaining detailed travel history of the patient in the last one year and locate possible source of infection for further interventions
- Abate water sources in the area(s)
- Create awareness on GWD and the cash rewards
- Animal infection surveillance
- Continue raising awareness on GWD by integrating with other public health and IDSR activities in the state



Preparedness for the flooding season

- South Sudan is expected to face another severe flooding season in 2021 for the third consecutive year. The severe flooding seasons in 2019 and 2020 affected over one million people across many counties.
- The government ministries and partners continue to undertake mitigation measures in readiness for the upcoming flooding season including:
 - Rehabilitation of the damaged dykes in Bor South and Twic East counties.
 - Monitoring of the rainfall forecast to enable the provision of early warning signals. Moderate rainfall (50 - 100 mm) is expected over much of South Sudan during 27 July -3 August 2021.
 - Updating of flooding preparedness and contingency plans and prepositioning of essential supplies including emergency health kits
- Flooding has affected some 21 000 people in Old Fangak County in Jonglei, and some 3 000 people in Guit County, Unity in June 2021.



Updates on Public Health Response

- The humanitarian situation in South Sudan deteriorated in the first of 2021. The Integrated Food Security Phase Classification (IPC) report released in December 2020 projected that 7.2 million people will face high levels of acute (IPC Phase 3+) food insecurity during April-July 2021.
- In the six most affected counties, some 820 000 people were projected to face a crisis or worse levels of food insecurity while over 108 000 people were projected to be in IPC Phase 5 catastrophe during the lean season.
- The multi-sectoral response aimed at scaling up access to life-saving food security and livelihood, health and nutrition, protection and WASH services and assistance has been underway in the prioritized six counties since December 2020.
- WHO and Health Cluster partners aim at reducing preventable mortality and morbidity by scaling up access to basic health and nutrition services, enhancing capacities of disease surveillance, prevention, detection and response to infectious disease outbreaks, and building resilience of the health system.

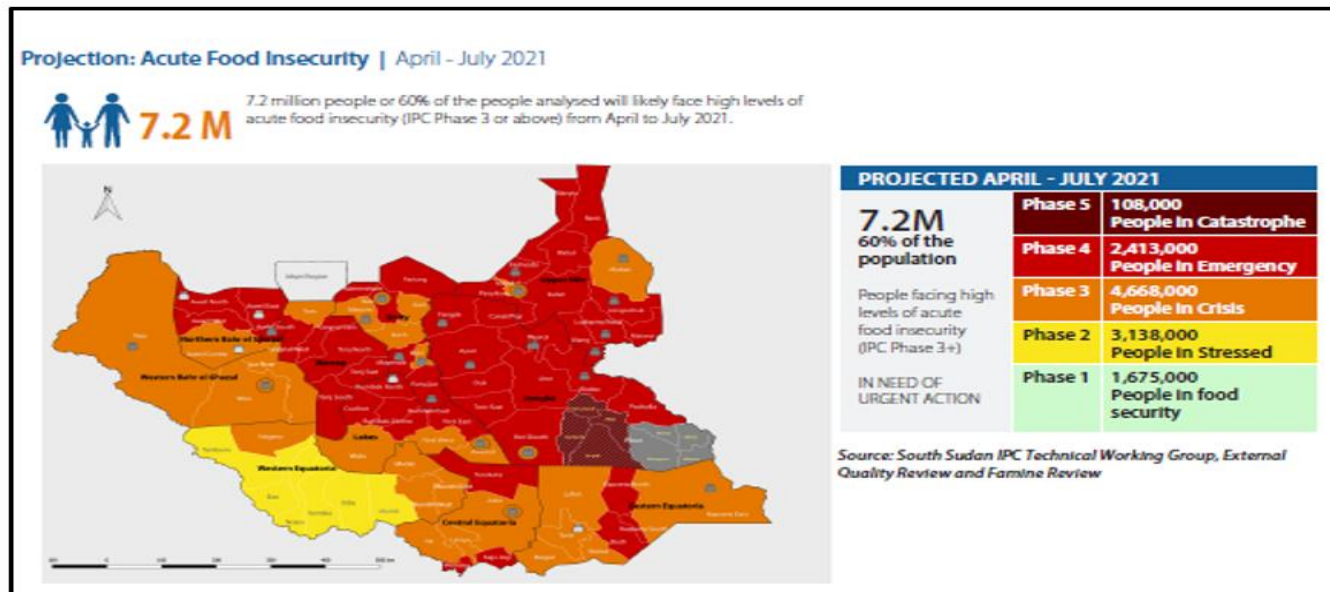


Figure 1: population estimates by IPC Phase and State based on the compilation of the South Sudan IPC Technical Working Group

- Increased looting of supplies and sustained sub-national violence in Greater Tonj and GPAA, and threats and attacks on humanitarians by youths in several locations impeded humanitarian operations.
- The most recent incident of sub-national violence occurred on 8-9 July 2021 in Tonj North resulting in the displacement of >5 000 people, killing of 14 people and burning of 140 shelters. Health facilities, schools and a UN warehouse containing aid food were vandalized and looted.



AFP Cases in 2021:

The total number AFP cases is 249. cases of the Week are reported from.

▪ **Main surveillance indicators for 2021**

- *The national Non-Polio AFP rate is 6.73 in 2021, All state hubs haven achieved NP-AFP rate of 2.0 and above except Northern Bahr El Ghazal*
- *8 Hubs achieved stool adequacy rate of 80% except; Jonglei state hub and Western Bahr El Ghazal State is below*

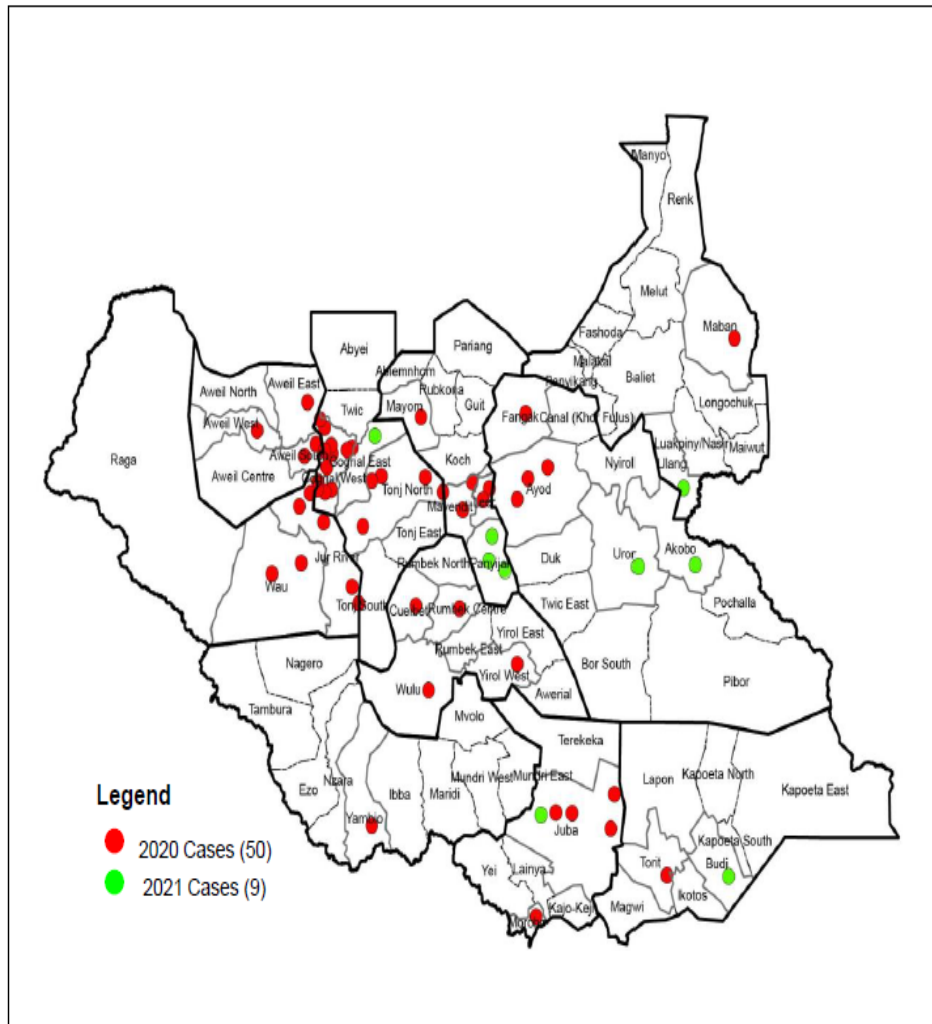
▪ **Total of reported AFP Cases in 2021 are 249 (below details by classification).**

- *Discarded as NPAFP =199*
- *Pending for Lab culture =30*
- *Pending Lab ITD =0*
- *Pending for NPEC =4*

• **AFP Surveillance indicators:**

- *Early detection within 7 days of onset of cases =92%*
- *Early investigation within 48 Hours from Notification =83%*
- *# of silent Counties that didn't report any case for 2019 =13(16%),*
- *Stool Adequacy =88%*
- *Immunity profile 4+ Doses (6-59) for 2021 AFP cases = 52%*
- *Intensified case search continues at facility ,Community and AVADAR*

Distribution of cVDPV2 case isolates from AFP cases as 10th Aug, 2021



- Total of 59 cases with 27 counties affected by the cVDPV2 outbreak across all 10 states.
- The most recent cVDPV2 case from AFP sample was reported from Panyijar, Unity State, with date onset of paralysis on 8th April 2021.
- 9 new cases reported after completion of one round of mOPV2 and 2 after the 2nd round
- Only 9 new cases with date of onset in 2021
- All cases in 2021 have occurred in a different county except that in Juba.
- 3 cases reported from Environmental samples and isolates were reported from Amarat and Roton environmental surveillance sites.

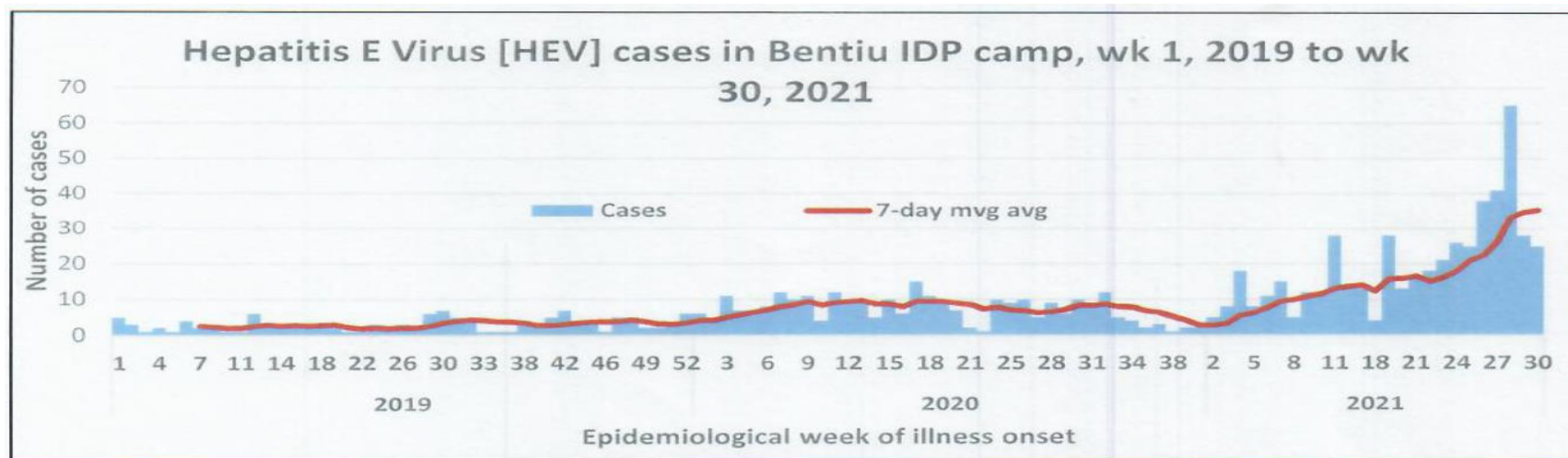


Aetiological agent	Location (county)	Date first reported	New cases since last bulletin	Cumulative cases to date (attack rate %)	Interventions			
					Case management	Vaccination	Health promotion	WASH
Ongoing epidemics								
Hepatitis E	Bentiu PoC	03/01/2018	14	631 (0.022)	Yes	No	Yes	Yes
COVID-19	35 counties	05/4/2020		10,855	yes	yes	yes	yes
cVDPV2	25 counties	11/06/2020 18/09/2020	0	54	Yes	Yes	Yes	Yes
Rubella	Tambura	11/1/2021	0	23 (0.13)	Yes	No	Yes	Yes
Rubella	Nagero	01/03/ 20201	0	5 (0.25)	Yes	No	Yes	N/A





Hepatitis E, Bentiu IDP settlement (1)



Descriptive epidemiology

- The persistent transmission of HEV in Bentiu IDP camp continues with **905** cases since beginning of 2019
- There were (**20**) new cases reported in week 30, 2021
- All the cases were managed as outpatient cases except for seven cases who were admitted
- 5 deaths reported in 2019 and 2020
- 48% are female and 52% are male.
- Age group less than 15 years had the most cases with (64%) cases.
- There is risk of adverse outcomes women are infected in their last trimester
- Use of unsafe drinking water is likely to be source of infection
- Up to week 30, 2021; a cumulative of 905 HEV cases in Bentiu IDP camp including 6 deaths (CFR 0.66%)
- There is an upsurge of HEV cases since the beginning of 2021. The upsurge is attributed to declining WASH in the IDP camp as the daily workers and hygiene promoters have not been working for months now amidst reduced funding for WASH activities in IDP camp.

Public health interventions in response to the current upsurge

- On 4th August 2021, the HEV taskforce was established and continues to meet every Wednesday of the week.
- The primary health care clinics are conducting passive and active case search with new suspect cases being referred to the MSF hospital for case management.
- WASH partners have intensified targeted hygiene promotion at household level using the HEV line list.
- The weekly detailed WASH needs assessments are ongoing to define and localize the gaps.
- WASH is planning to do blanket distribution of WASH NFIs buckets and jerricans to the residents of the IDP camp.
- MSF is sharing the line list on weekly and are doing case management.
- WHO is supporting the overall coordination and convening of the taskforce meetings and technical guidance for the overall health response (surveillance, sample testing, and clinical care).
- WHO is also engaged in discussions with MSF at the global level to explore the possibilities for vaccination as an additional tool for the current HEV response



Aetiological agent	Location (county)	Date first reported	New cases since last bulletin	Cumulative cases to date (attack rate %)	Interventions			
					Case management	Vaccination	Health promotion	WASH
Controlled epidemics								
Measles	Juba	21/11/2019	NR	6(0.1667)	Yes	No	Yes	N/A
Measles	Tonj East	12/12/2019	NR	61(0.98)	yes	Yes	Yes	N/A
Measles	Bor	17/01/2020	NR	14(0.214)	yes	No	yes	N/A
Measles	Jebel Boma	10/12/2019	NR	96(0.063)	yes	No	Yes	N/A
Measles	Kapoeta East	18/01/2020	NR	16(0.625)	yes	No	Yes	N/A
Measles	Aweil East	29/12/2019	NR	664 (0.127)	Yes		No	Yes
Measles	Pibor	27/1/2020	NR	355 (0.0028)	Yes		Yes	Yes
Measles	Wau	5/1/2020	NR	39 (0.051)	Yes		Yes	Yes
Measles	Ibba	25/1/2020	0	55 (0.36)	Yes		Yes	Yes



COVID-19 Updates

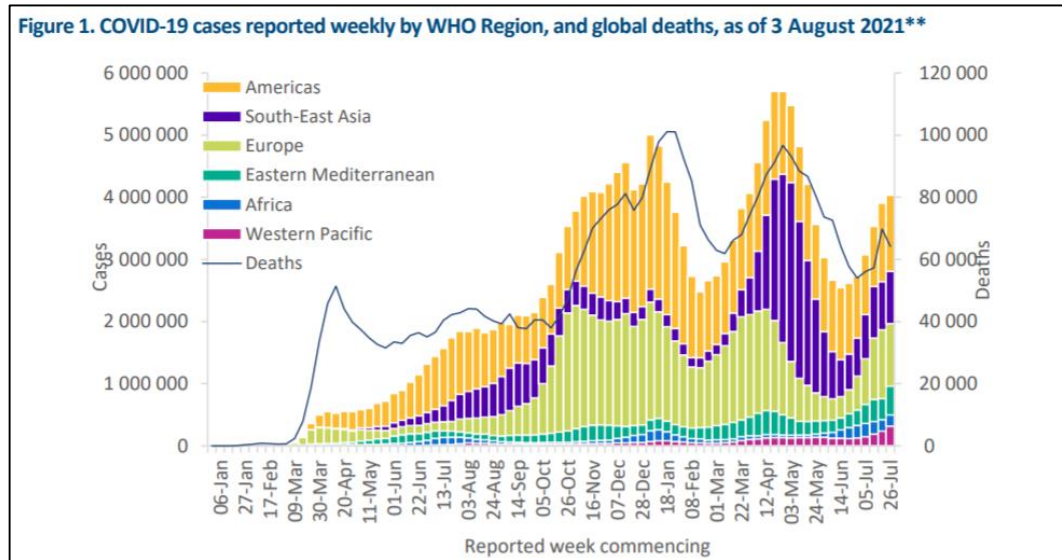


COVID-19 Virus Situation Summary



Situation update as of 3rd August 2021

- **Globally, 3rd August 2021**, there have been **197 788 117 confirmed cases** of COVID-19, including **4 219 578 deaths**, reported to WHO. As of **29 July 2021**, a total of **3,839,816,037 vaccine doses** have been administered.
- **In Africa, as of 3rd August 2021**, there have been **4 955 648 confirmed cases** of COVID-19, including **117 282 deaths** reported to WHO



WHO: <https://www.who.int/health-topics/coronavirus>

COVID-19 Response in South Sudan as of 18 July 2021



- Forty-nine new cases were identified in Week 30, bringing the cumulative number of confirmed cases to 11063, including 388 imported cases mainly from South Sudanese returnees (217), Uganda (52), and Kenya (19). There were four new imported cases in Week 30 (all from the Nimule point of entry).
- At the end of Week 30, 35 (43.8%) of the 80 counties in the country have a confirmed case. There was no county with a first confirmed case this week.
- This week showed a 10.9% decrease in the number of reported cases compared to Week 29. There were two new deaths confirmed in Week 30.
- Average positivity yields have been declining in recent epi weeks (after peaking at 22.4% in Week 07), reaching a low of 0.4% in Week 19 before increasing to 1.4% this week
- Four alerts tested positive for COVID-19 this week. Cumulatively, 29251 alerts have been reported, of which 2797 (9.6%) have been verified, and 2716 (97.1%) of the verified alerts were sampled
- Cumulatively, 16598 contacts have been listed and followed up since the first confirmed case was reported in April 2020, of which 15132 (91.2%) have completed follow-up.
- Two SARS-CoV-2 lineages were detected in South Sudan. The first variant of interest (VOI) detected in the South Sudan samples is the A.23.1 lineage and the second one is the B.1.525 lineage
- South Sudan has exhausted its first batch of vaccines from the COVAX facility in Week 28. The second batch is expected in August. So far, South Sudan has vaccinated 57096 people, of whom 4763 are fully vaccinated and 52313 have received one dose.

COVID-19 Response in South Sudan

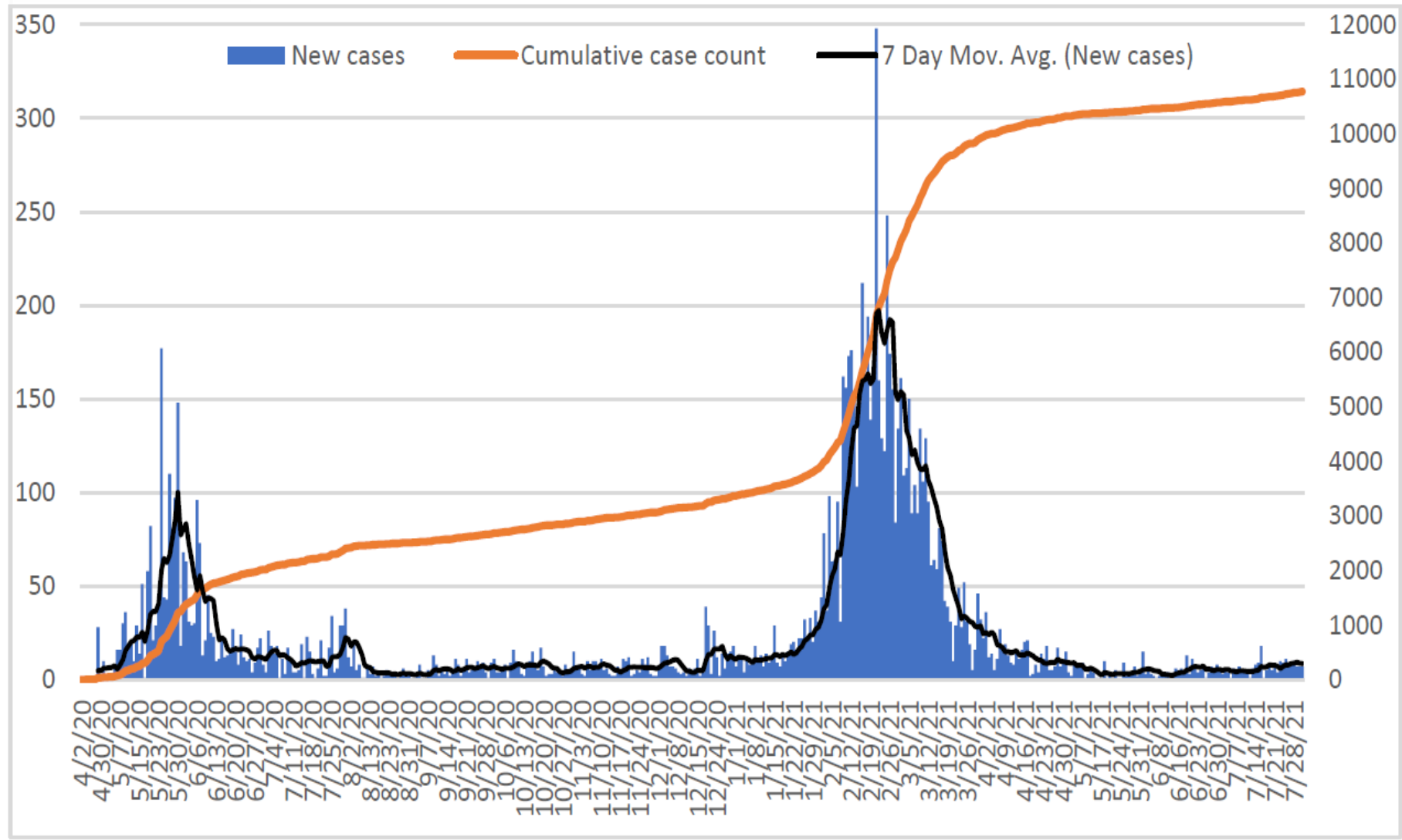


Figure 2. Epidemiological curve of reported cases through Week 30, showing new cases (blue bars), rolling 7-day average of reported cases (black line), and total cumulative reported cases (yellow line)

Overall Conclusions and Recommendations



Conclusion

- The overall performance of IDSR and EWARN reporting sites in week 30, 2021 is above the target of 80% in both Timeliness and Completeness
- **11, 063** confirmed COVID-19 cases (case fatality rate of 1.08%) 120 deaths. Total **16,598** contacts identified, quarantined, & undergoing follow up as of week 30, 2021
- Given the COVID-19 pandemic, and the third pandemic wave that is currently underway in Africa, resurgence monitoring and response readiness is being enhanced for all the pillars including surveillance, laboratory, case management, infection prevention and control, border health, and community engagement to emphasize adherence to public health social measures including vaccination of health workers, high risk groups, and the general population

Recommendations

- All partners should support CHDs & State Ministries of Health to undertake IDSR/EWARN reporting
- All health facilities should report, and conduct case-based investigation of suspect measles cases and routine measles immunization should be strengthened in all counties
- Strengthen capacities for COVID-19 resurgence monitoring and response readiness through identifying and testing suspect cases (including genomic sequencing), isolating and effective management of confirmed cases, contact tracing, community engagement, COVID-19 vaccination, and strengthening adherence to PHSMs.

Thanks to the State Surveillance Officers, County Surveillance Officers and Health Facility in-charges for sharing the weekly IDSR data

Thanks to all partners for supporting IDSR weekly reporting and sharing the line lists

To access the IDSR bulletins for 2020 use the link below:

<https://www.afro.who.int/publications/south-sudan-weekly-disease-surveillance-bulletin-2020>



IDSR timeliness & completeness performance at county level for week 29 of 2021 (1)



STATE	COUNTY	Number of reporting sites	No. of HF's Reported on Time in WK 30	Timeliness Percentage of WK 30	No. of HF's Reported regardless of time in WK 30	Completeness Percentage of WK 30	No. of HF's Reported regardless of time in WK 29	Completeness Percentage of WK 29
Lakes	Cueibet	15	15	100%	15	100%	15	100%
Lakes	Wulu	14	14	100%	14	100%	14	100%
Lakes	Awerial	7	7	100%	7	100%	7	100%
Lakes	Rumbek Centre	23	23	100%	23	100%	20	87%
Lakes	Yirol West	12	12	100%	12	100%	12	100%
NBGZ	Aweil South	11	11	100%	11	100%	11	100%
NBGZ	Aweil Centre	15	15	100%	15	100%	15	100%
WBGZ	Wau	28	28	100%	28	100%	27	96%
CES	Juba	46	44	96%	46	100%	45	98%
NBGZ	Aweil West	27	25	93%	27	100%	27	100%
NBGZ	Aweil North	25	23	92%	24	96%	25	100%
NBGZ	Aweil East	37	34	92%	37	100%	37	100%
Lakes	Yirol East	11	10	91%	11	100%	11	100%
WBGZ	Jur River	35	29	83%	35	100%	35	100%
WBGZ	Raja	15	12	80%	13	87%	13	87%
CES	Terekeka	20	15	75%	15	75%	16	80%
CES	Kajo Keji	17	11	65%	11	65%	11	65%
CES	Morobo	5	3	60%	3	60%	3	60%
CES	Yei	17	8	47%	13	76%	14	82%
Lakes	Rumbek East	24	8	33%	22	92%	24	100%
CES	Lailiya	16	4	25%	4	25%	6	38%
Lakes	Rumbek North	7	1	14%	7	100%	7	100%

STATE	COUNTY	Number of reporting sites	No. of HF's Reported on Time in WK 30	Timeliness Percentage of WK 30	No. of HF's Reported regardless of time in 30	Completeness Percentage of WK 30	No. of HF's Reported regardless of time in WK 29	Completeness Percentage of WK 29
Unity	Abiemnhom	4	4	100%	4	100%	4	100%
Unity	Koch	7	7	100%	7	100%	5	71%
WES	Nzara	20	20	100%	20	100%	20	100%
WES	Nagero	10	10	100%	10	100%	10	100%
WES	Mundri West	21	21	100%	21	100%	21	100%
WES	Maridi	26	26	100%	26	100%	26	100%
WES	Ibba	11	11	100%	11	100%	11	100%
WES	Mundri East	19	19	100%	19	100%	19	100%
WES	Yambio	42	42	100%	42	100%	42	100%
WES	Ezo	27	27	100%	27	100%	27	100%
WES	Mvolo	11	11	100%	11	100%	11	100%
WES	Tambura	28	26	93%	26	93%	26	93%
Unity	Guit	7	6	86%	7	100%	7	100%
Unity	Leer	11	8	73%	8	73%	2	18%
Unity	Mayom	14	10	71%	10	71%	12	86%
Unity	Rubkona	15	10	67%	13	87%	14	93%
Unity	Mayendit	12	8	67%	10	83%	0	0%
Unity	Panyijjar	15	9	60%	15	100%	14	93%
Unity	Pariang	11	1	9%	9	82%	9	82%

IDSR timeliness & completeness performance at county level for week 29 of 2021 (1)



STATE	COUNTY	Number of reporting sites	No. of HF's Reported on Time in WK 30	Timeliness Percentage of WK 30	No. of HF's Reported regardless of time in WK 30	Completeness Percentage of WK 30	No. of HF's Reported regardless of time in WK 29	Completeness Percentage of WK 29
EES	Kapoeta South	10	10	100%	10	100%	10	100%
Jonglei	Fangak	17	15	88%	16	94%	17	100%
Jonglei	Pochalla	7	6	86%	6	86%	7	100%
Jonglei	Nyirrol	10	8	80%	8	80%	7	70%
Jonglei	Duk	15	11	73%	11	73%	11	73%
Jonglei	Twic East	11	8	73%	8	73%	8	73%
Jonglei	Pibor	7	5	71%	7	100%	5	71%
EES	Torit	20	14	70%	14	70%	17	85%
Jonglei	Ayod	15	10	67%	11	73%	12	80%
Jonglei	Bor	35	21	60%	21	60%	21	60%
EES	Ikotos	27	16	59%	22	81%	26	96%
EES	Lopa Lafon	18	10	56%	11	61%	10	56%
EES	Magwi	22	10	45%	17	77%	20	91%
EES	Kapoeta East	12	5	42%	8	67%	9	75%
EES	Budi	21	8	38%	14	67%	16	76%
Jonglei	Canal Pigi	12	3	25%	3	25%	5	42%
EES	Kapoeta North	16	0	0%	15	94%	15	94%
Jonglei	Akobo	8	0	0%	2	25%	2	25%
Jonglei	Uror	8	0	0%	2	25%	0	0%

STATE	COUNTY	Number of reporting sites	No. of HF's Reported on Time in WK 30	Timeliness Percentage of WK 30	No. of HF's Reported regardless of time in WK 30	Completeness Percentage of WK 30	No. of HF's Reported regardless of time in WK 29	Completeness Percentage of WK 29
Upper Nile	Makal	7	7	100%	7	100%	7	100%
Warrap	Tonj South	14	14	100%	14	100%	14	100%
Upper Nile	Maiwut	5	5	100%	5	100%	5	100%
Upper Nile	Longechuk	9	9	100%	9	100%	9	100%
Upper Nile	Akoka	5	5	100%	5	100%	4	80%
Warrap	Tonj North	14	13	93%	13	93%	13	93%
Warrap	Gogrial West	31	28	90%	28	90%	30	97%
Warrap	Tonj East	14	11	79%	11	79%	10	71%
Upper Nile	Maban	17	12	71%	12	71%	12	71%
Upper Nile	Fashoda	18	12	67%	12	67%	14	78%
Upper Nile	Ulang	14	9	64%	9	64%	10	71%
Upper Nile	Luakpiny Nasir	12	6	50%	11	92%	10	83%
Warrap	Abyei	10	5	50%	6	60%	6	60%
Upper Nile	Manyo	10	5	50%	6	60%	5	50%
Upper Nile	Panyikang	4	2	50%	2	50%	3	75%
Warrap	Twic	26	7	27%	7	27%	25	96%
Upper Nile	Baliet	4	1	25%	1	25%	3	75%
Upper Nile	Melut	8	0	0%	5	63%	0	0%
Warrap	Gogrial East	15	0	0%	0	0%	12	80%
Upper Nile	Renk	11	0	0%	0	0%	0	0%



States	Number of reporting sites	Supporting Partners
WES	213	AMREF, World Vision, CUAMM, CDTY, OPEN
CES	117	HLSS, SSUHA, Healthnet TPO, IHO,GOAL,TRI-SS,THESO,IMA,SSHCO
NBGZ	133	Malaria Consortium, Health net TPO, IRC, CEDS, IHO
WBGZ	78	Cordaid, Healthnet TPO, CARE International,IOM,ALIMA
Jonglei	107	Nile Hope, MDM, JDF, Livewell, CMD, HFO, EDA, CRADA, Malaria Consortium, CMA,ACSO,MEDAIR,CARE,World Relief,UNH
EES	142	Cordaid, HLSS, CCM
Unity	94	Cordaid, UNIDOR, IRC, CHADO, CARE International, CRADA, CASS,IOM,Samaritan's Purse
Warrap	123	GOAL, CCM, WVI, Malaria Consortium, UNKEA, Save the Children, MSF
Upper Nile	112	Cordaid, WVI, RI, IMC, NIDO, UNKEA, MC, SSAID,CORDAID ,IOM,HFD,TADO
Lakes	113	Doctors with Africa (CUAMM)

This bulletin is produced by the Ministry of Health with Technical support from WHO

For more help and support, please contact:

Dr. John Rumunu

Director General Preventive Health Services
Ministry of Health
Republic of South Sudan
Telephone: +211924767490
Email: ori.moiga@gmail.com

Mr. Angelo Majak Goup

A/Director, Emergency Preparedness and Response
Ministry of Health, RSS
Tell: +211929830530
Emails: majakdegoup99@gmail.com

IDSR Bulletin Editorial Team

1. Mr. Ajak Ater, MoH - Email: ajakater014@gmail.com
2. Ms. Sheila Baya, WHO - Email: bayas@who.int
3. Mr. Robert Lasu Martin, WHO - Email: lasur@who.int
4. Mrs. Rose Dagama, WHO - Email: dagamaa@who.int
5. Dr. Abraham Adut, WHO - Email: abenegoa@who.int
6. Dr. Alice Igale Lado, WHO - Email: ladua@who.int
7. Dr. Joseph Wamala, WHO - Email: wamalaj@who.int
8. Dr. Argata Guracha Guyo, WHO - Email: guyo@who.int

Notes

WHO and the Ministry of Health gratefully acknowledge the surveillance officers [at state, county, and health facility levels], health cluster and health pooled fund (HPF) partners who have reported the data used in this bulletin. We would also like to thank ECHO and USAID for providing financial support.

The data has been collected with support from the EWARS project. This is an initiative to strengthen early warning, alert and response in emergencies. It includes an online, desktop and mobile application that can be rapidly configured and deployed in the field. It is designed with frontline users in mind, and built to work in difficult and remote operating environments. This bulletin has been automatically published from the EWARS application.

More information can be found at <http://ewars-project.org>

