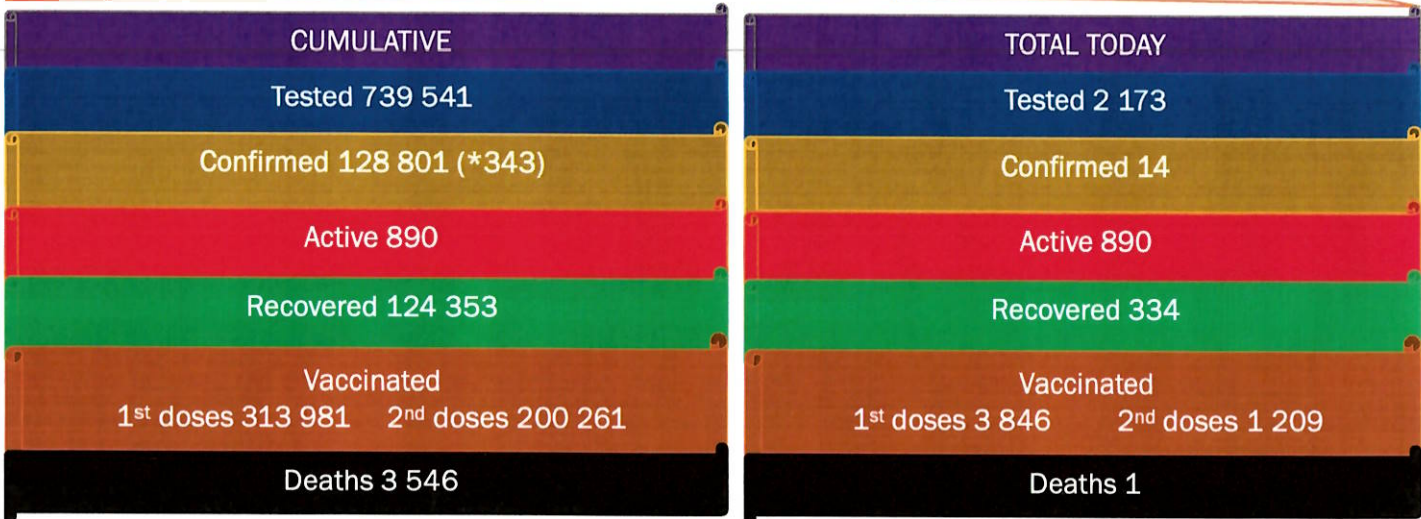




NAMIBIA COVID-19 SITUATION REPORT NO. 582

Outbreak Name	COVID-19 outbreak	Country affected	Namibia
Date & Time	21 October 2021 17h00	Investigation start Date	13 March 2020
Prepared by	Surveillance Team		

HIGHLIGHTS/SITUATION UPDATE (21/10/2021)



*The cumulative total includes three hundred and forty-three (343) antigen positive results that were missed from the reports between May 2021 and October 2021

- A total of **128 801** cases have been recorded to-date, representing **5%** of the total population (**2 550 226**).
- More female cases **68 537 (53%)** have been recorded.
- Of the total confirmed cases, **4 350 (3%)** are Health Workers, with **1** new confirmation today.
 - 3 631 (83%) State; 711 (16%) Private, 8 (0.2%) Non-Governmental Organizations.
 - 4 340 (99%) recoveries and 25 (0.6%) deaths.
- The recovery rate now stands at **97%**.
- Khomas and Erongo regions reported the highest number of cases with **41 781 (32%)** and **18 437 (14%)** respectively.
- Of the total fatalities, **3 256 (92%)** are COVID-19 deaths while **290 (8%)** are COVID-19 related deaths. The case fatality rate now stands at **2.8%**.

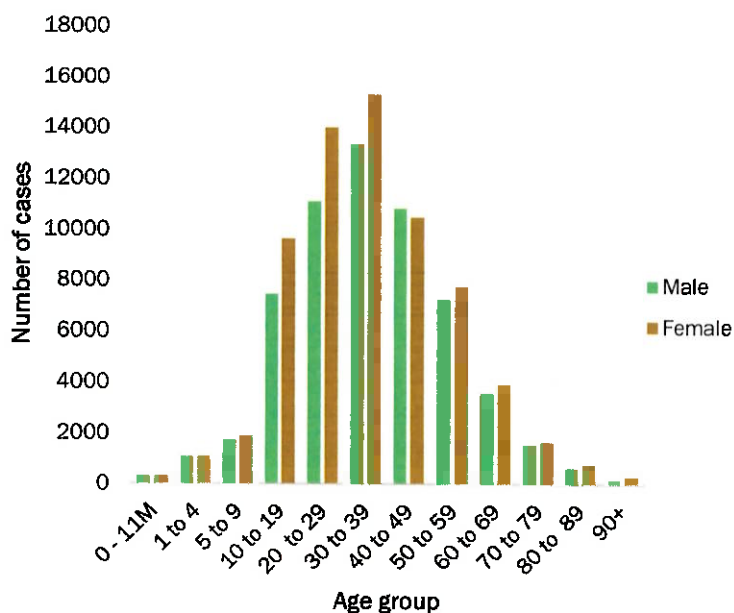
Table 1: Distribution of confirmed COVID-19 cases by region, 21 October 2021

Region	Total cases daily	Total No. of cases	Active cases	Recoveries	Cumulative Deaths	Cumulative deaths with co-morbidities	Non-COVID deaths	Health Workers
Erongo	131	18 437	36	17 985	411	341	5	417
Hardap	1	7 603	6	7 339	258	161	0	133
Kharas	4	7 866	28	7 688	150	129	0	242
Kavango East	3	5 512	5	5 308	198	119	1	246
Kavango West	0	641	2	621	18	16	0	38
Khomas	113	41 781	444	40 474	862	674	1	1 494
Kunene	4	3 733	62	3 551	120	88	0	97
Ohangwena	0	5 087	84	4 845	156	97	2	163
Omaheke	1	4 002	17	3 733	252	173	0	122
Omusati	3	5 748	31	5 488	229	138	0	181
Oshana	18	9 139	131	8 677	330	196	1	528
Oshikoto	6	6 759	26	6 557	174	139	2	319
Otjozondjupa	71	9 492	13	9 207	272	185	0	264
Zambezi	2	3 001	5	2 880	116	67	0	106
Total	357	128 801	890	124 353	3 546	2 523	12	4 350

EPIDEMIOLOGICAL SITUATION IN NAMIBIA

Table 2: The current distribution for hospitalization of confirmed cases by region, 21 October 2021

Region	Hospitalized confirmed cases	Intensive Care Unit
Erongo	1	0
Hardap	0	0
Kharas	6	0
Kavango East	2	0
Kavango West	1	0
Khomas	8	0
Kunene	7	0
Ohangwena	8	0
Omaheke	0	0
Omusati	10	0
Oshana	8	2
Oshikoto	1	0
Otjozondjupa	0	0
Zambezi	0	0
Total	52	2



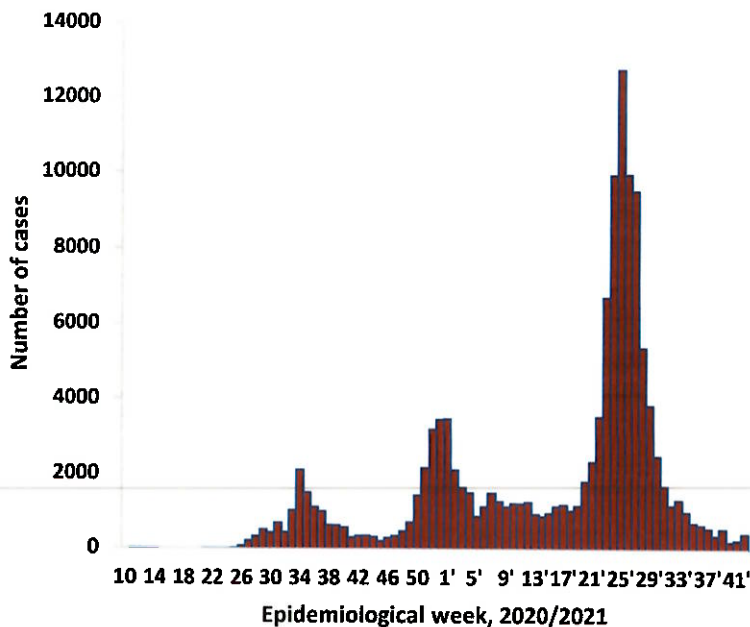
- Of the total confirmed cases, **76 103 (59%)** are in the 20-49 years age-brackets which constitutes the majority of the recorded cases.
- A total of **21 578 (17%)** of the confirmed cases are among the 5-19 years category.
- A total of **15 228 (12%)** of the confirmed cases are among the 50 - 59 years group.
- The under 5 years age group make up **2 918 (2%)** of the total cases whereas, **12 974 (10%)** are above 60 years of age.

Figure 1: Age and Sex distribution of COVID-19 confirmed cases 21 October 2021

Table 3: Number of people in quarantine, 21 October 2021

Region	Newly quarantined 24 hours	Cumulative number	Number discharged	Number In quarantine now
Erongo	0	6931	6911	20
Hardap	1	3192	3184	8
Kavango (East and West)	0	1673	1673	0
Khomas	1	3700	3698	2
Kharas	0	9909	9859	50
Kunene	0	6493	6393	100
Ohangwena	0	695	695	0
Omaheke	393	16500	15976	524
Omusati	53	3316	3234	82
Oshana	0	400	400	0
Oshikoto	22	23873	23831	42
Otjozondjupa	0	1834	1812	22
Zambezi	0	2026	2011	15
Total	470	80 542	79 677	865

- Since March 2020, **80 542** people have been placed into quarantine around the country.
- A total of **865** people are currently in quarantine, with **470** new admissions.



- The highest peak of **12 787 (10%)** cases was recorded during week 25 of 2021 (Figure 1).
- After a peak in epi-week 25, the country has seen a gradual reduction in the average number of confirmed cases from 1 598 to 35 in epi-week 41.
- The number of cases have plateaued in the last seven (7) weeks as seen in the graph.

- The National Call Center continues operations for 24 hours daily.
- Today (21/10/2021), **404** calls were answered.

Figure 3: Epi-curve for confirmed COVID-19 cases, 21 October 2021

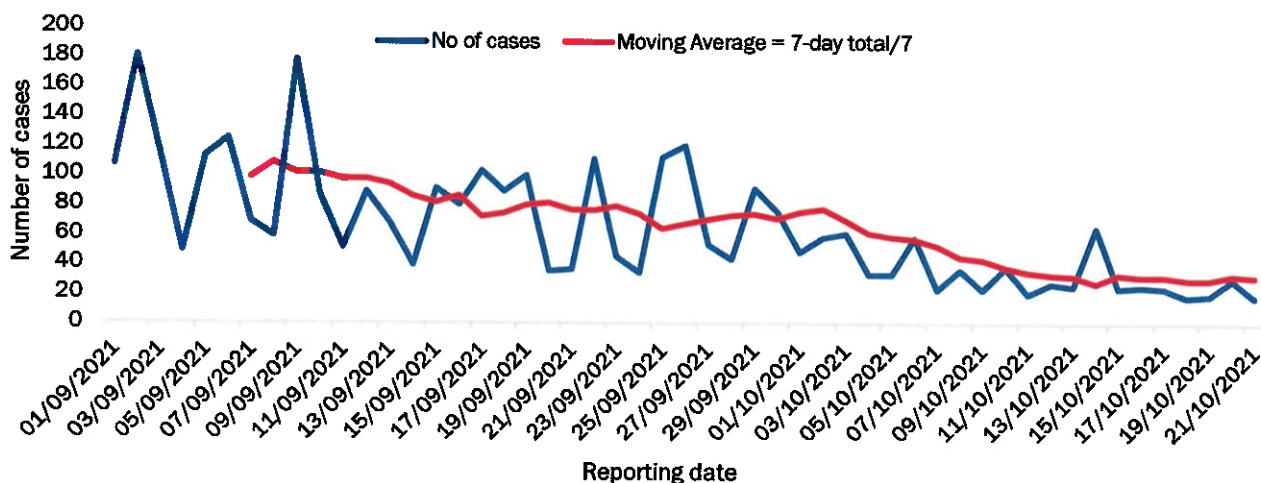


Figure 4: The 7 days moving average line chart for confirmed COVID-19 cases, 21 October 2021

- The laboratory testing capacity has been enhanced; with a total of fifteen (15) laboratories carrying out the testing of samples: NIP, Path-Care, UNAM Molecular, Central Veterinary Laboratory, Namib Poultry, NAMDEB, NamPath, Namibia Central Pathology, DiagnoLab, High Care, Alpha Medical Laboratory, Des-Jo Medical Test Centre, ProQuest Diagnostic Laboratory, MAXI and Medlink Laboratory Services.
- To date, **739 541** tests (including **14 329** re-tests) have been conducted by authorized laboratories.
- Since the beginning of the outbreak, **145 890** contacts of confirmed cases have been identified, **57** new contacts were identified within the last 24 hours from 12 regions.
- Cumulatively, **143 434** contacts have completed their monitoring period, while **288** contacts are lost to follow-up and a total of **25 351 (20%)** contacts of confirmed cases have tested positive.
- Today, **325 (47%)** out of **690** active contacts were monitored.

Table 4: COVID-19 specimen recorded at the Laboratories 21 October 2021

VARIABLES	TOTAL
Total samples received by the Laboratory	739 658
Total samples tested	725 212
Total samples re-tested	14 329
Total positive results	128 838
Total negative results	596 360
Total samples discarded	117
Invalid results	0
Total pending results	7
Indeterminant/Inconclusive	7
Suspected cases in 24 hours (excluding re-tests)	2 170

Table 5: Summary of COVID-19 vaccine doses administered, 20 October 2021

Region	Cumulative no. of persons vaccinated with doses of Sinopharm, AstraZeneca, Sputnik V, Pfizer and Jassen & Johnson		Targeted Population	Vaccination Coverage (%)	Cumulative no. of Healthcare Workers vaccinated with doses of Sinopharm, AstraZeneca, Sputnik V, Pfizer and Jassen & Johnson	
	1 st doses	Fully vaccinated			1 st doses	Fully vaccinated
Erongo	32 152	26 417	121 682	21%	1 099	850
Hardap	19 430	15 158	56 741	26%	470	390
Kharas	14 078	11 556	55 489	20%	626	358
Kavango East	17 479	12 178	117 665	9%	948	832
Kavango West	10 057	8 663	29 228	27%	341	337
Khomas	81 160	64 205	286 641	22%	3 568	2 612
Kunene	19 080	13 576	66 499	20%	623	483
Ohangwena	21 065	15 722	164 102	9%	688	575
Omaheke	14 437	9 680	51 765	18%	350	248
Omusati	20 664	16 139	139 451	11%	854	674
Oshana	18 085	14 622	126 374	11%	1 343	1 098
Oshikoto	17 321	13 846	124 395	11%	763	699
Otjozondjupa	24 133	19 566	97 903	19%	762	576
Zambezi	4 840	3 960	63 106	6%	517	518
Total	313 981	245 288	1 501 041	16%	12 952	10 250

PUBLIC HEALTH ACTION (S)

- The COVID-19 vaccination programme is ongoing throughout the country.
- Public Health measures continue to be enforced as the situation is closely monitored.
- The government and development partners continue to prioritize the continuation of essential health services.

CHALLENGES

- Slow vaccine uptake among members of the public, and circulation of anti-vaccination information.
- Poor adherence to COVID-19 Infection Prevention and Control (IPC) measures by the general public.

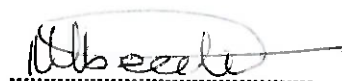
RECOMMENDATIONS

- Encourage the public to get vaccinated and strengthen community health awareness to encounter anti-vaccination information in circulation.
- Continue to give awareness on the importance of adhering to COVID-19 IPC measures; with the involvement of the Security Cluster.




APPROVED



INCIDENT MANAGER
21 OCTOBER 2021



SECRETARIAT

For enquiries, please contact
Namibia Public Health Emergency Operations Centre;
 PHEOC@mhss.gov.na
 0800 100 100
 0851 100 100