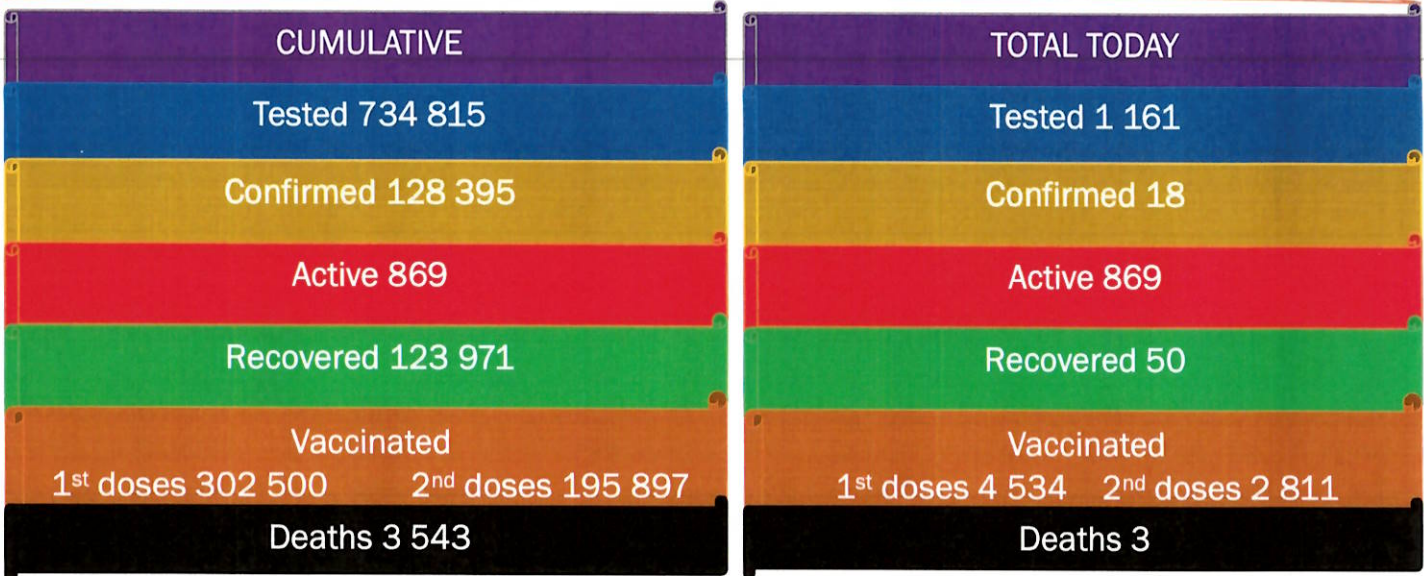




NAMIBIA COVID-19 SITUATION REPORT NO. 579

| | | | |
|---------------|--------------------------|--------------------------|---------------|
| Outbreak Name | COVID-19 outbreak | Country affected | Namibia |
| Date & Time | 18 October 2021 17h00 | Investigation start Date | 13 March 2020 |
| Prepared by | Surveillance Team | | |

HIGHLIGHTS/SITUATION UPDATE (18/10/2021)



- A total of **128 395** cases have been recorded to-date, representing **5%** of the total population (**2 550 226**).
- More female cases **68 325 (53%)** have been recorded.
- Of the total confirmed cases, **4 349 (3%)** are Health Workers, with no new confirmation today.
 - 3 630 (83%) State; 711 (16%) Private, 8 (0.2%) Non-Governmental Organizations.
 - 4 340 (99%) recoveries and 25 (0.6%) deaths.
- The recovery rate now stands at **97%**.
- Khomas and Erongo regions reported the highest number of cases with **41 660 (32%)** and **18 304 (14%)** respectively.
- Of the total fatalities, **3 254 (92%)** are COVID-19 deaths while **289 (8%)** are COVID-19 related deaths. The case fatality rate now stands at **2.8%**.

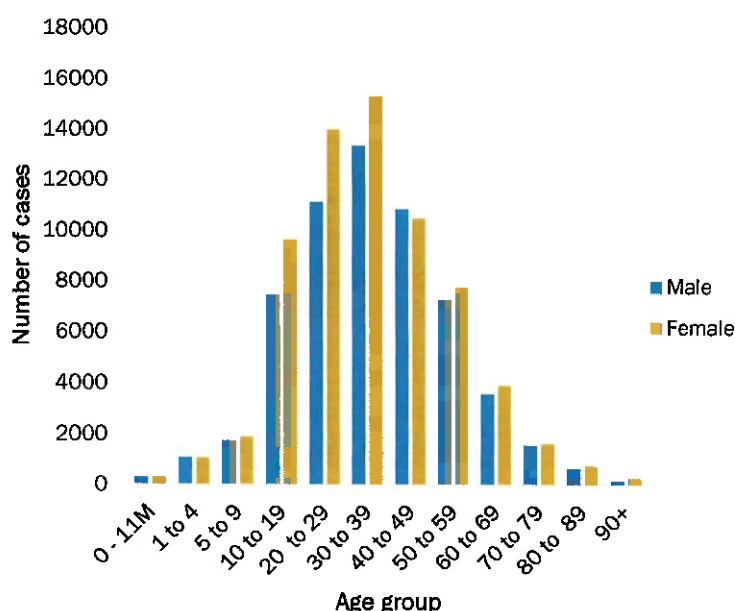
Table 1: Distribution of confirmed COVID-19 cases by region, 18 October 2021

| Region | Total cases daily | Total No. of cases | Active cases | Recoveries | Cumulative Deaths | Cumulative deaths with co-morbidities | Non-COVID deaths | Health Workers |
|--------------|-------------------|--------------------|--------------|----------------|-------------------|---------------------------------------|------------------|----------------|
| Erongo | 1 | 18 304 | 18 | 17 870 | 411 | 341 | 5 | 417 |
| Hardap | 0 | 7 599 | 7 | 7 334 | 258 | 161 | 0 | 133 |
| Kharas | 10 | 7 854 | 23 | 7 682 | 149 | 128 | 0 | 242 |
| Kavango East | 0 | 5 507 | 5 | 5 303 | 198 | 119 | 1 | 246 |
| Kavango West | 0 | 641 | 2 | 621 | 18 | 16 | 0 | 38 |
| Khomas | 4 | 41 660 | 437 | 40 360 | 862 | 674 | 1 | 1 494 |
| Kunene | 0 | 3 726 | 57 | 3 549 | 120 | 88 | 0 | 97 |
| Ohangwena | 0 | 5 085 | 90 | 4 837 | 156 | 97 | 2 | 163 |
| Omaheke | 0 | 4 001 | 18 | 3 731 | 252 | 173 | 0 | 122 |
| Omusati | 3 | 5 734 | 36 | 5 470 | 228 | 137 | 0 | 181 |
| Oshana | 0 | 9 117 | 136 | 8 650 | 330 | 196 | 1 | 527 |
| Oshikoto | 0 | 6 750 | 28 | 6 547 | 173 | 138 | 2 | 319 |
| Otjozondjupa | 0 | 9 419 | 9 | 9 138 | 272 | 185 | 0 | 264 |
| Zambezi | 0 | 2 998 | 3 | 2 879 | 116 | 67 | 0 | 106 |
| Total | 18 | 128 395 | 869 | 123 971 | 3 543 | 2 520 | 12 | 4 349 |

EPIDEMIOLOGICAL SITUATION IN NAMIBIA

Table 2: The current distribution for hospitalization of confirmed cases by region, 18 October 2021

| Region | Hospitalized confirmed cases | Intensive Care Unit |
|--------------|------------------------------|---------------------|
| Erongo | 1 | 0 |
| Hardap | 0 | 0 |
| Kharas | 3 | 0 |
| Kavango East | 5 | 1 |
| Kavango West | 1 | 0 |
| Khomas | 4 | 1 |
| Kunene | 6 | 0 |
| Ohangwena | 8 | 0 |
| Omaheke | 0 | 0 |
| Omusati | 8 | 0 |
| Oshana | 11 | 3 |
| Oshikoto | 3 | 1 |
| Otjozondjupa | 0 | 0 |
| Zambezi | 0 | 0 |
| Total | 50 | 6 |



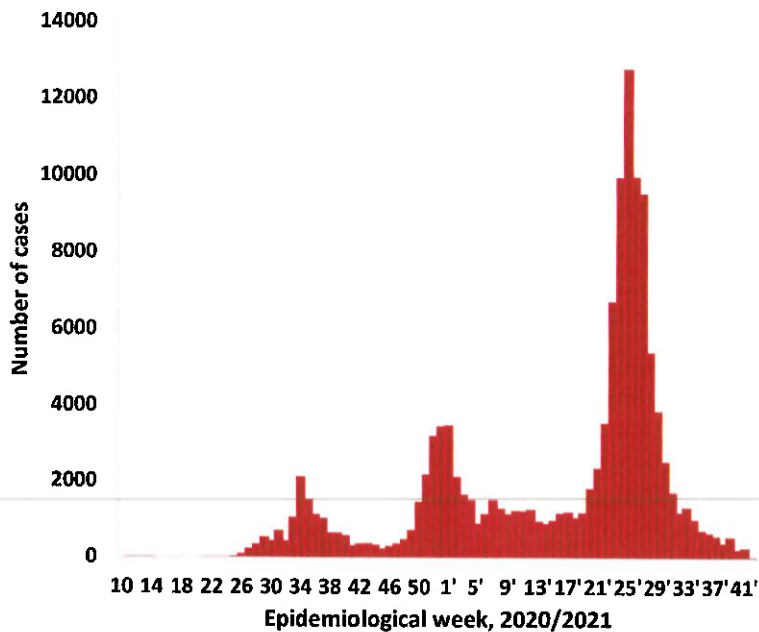
- Of the total confirmed cases, **75 908 (59%)** are in the 20-49 years age-brackets which constitutes the majority of the recorded cases.
- A total of **21 537 (17%)** of the confirmed cases are among the 5-19 years category.
- A total of **15 176 (12%)** of the confirmed cases are among the 50 - 59 years group.
- The under 5 years age group make up **2 915 (2%)** of the total cases whereas, **12 859 (10%)** are above 60 years of age.

Figure 1: Age and Sex distribution of COVID-19 confirmed cases 18 October 2021

Table 3: Number of people in quarantine, 18 October 2021

| Region | Newly quarantined 24 hours | Cumulative number | Number discharged | Number in quarantine now |
|-------------------------|----------------------------|-------------------|-------------------|--------------------------|
| Erongo | 0 | 6 931 | 6 911 | 20 |
| Hardap | 0 | 3 185 | 3 179 | 6 |
| Kavango (East and West) | 0 | 1 673 | 1 673 | 0 |
| Khomas | 0 | 3 699 | 3 697 | 2 |
| Kharas | 0 | 9 909 | 9 859 | 50 |
| Kunene | 0 | 6 493 | 6 393 | 100 |
| Ohangwena | 0 | 695 | 695 | 0 |
| Omaheke | 0 | 16 054 | 15 746 | 308 |
| Omusati | 0 | 3 263 | 3 171 | 92 |
| Oshana | 0 | 400 | 400 | 0 |
| Oshikoto | 0 | 23 793 | 23 724 | 69 |
| Otjozondjupa | 0 | 1 834 | 1 812 | 22 |
| Zambezi | 0 | 2 026 | 2 011 | 15 |
| Total | 0 | 79 955 | 79 271 | 684 |

- Since March 2020, **79 995** people have been placed into quarantine around the country.
- A total of **684** people are currently in quarantine, with no new admissions.



- The highest peak of **12 787 (10%)** cases was recorded during week 25 of 2021 (Figure 1).
- After a peak in epi-week 25, the country has seen a gradual reduction in the average number of confirmed cases from 1 598 to 35 in epi-week 41.
- The number of cases have plateaued in the last seven (7) weeks as seen in the graph.

- The National Call Center continues operations for 24 hours daily.
- Today (18/10/2021), **569** calls were answered.

Figure 3: Epi-curve for confirmed COVID-19 cases, 18 October 2021

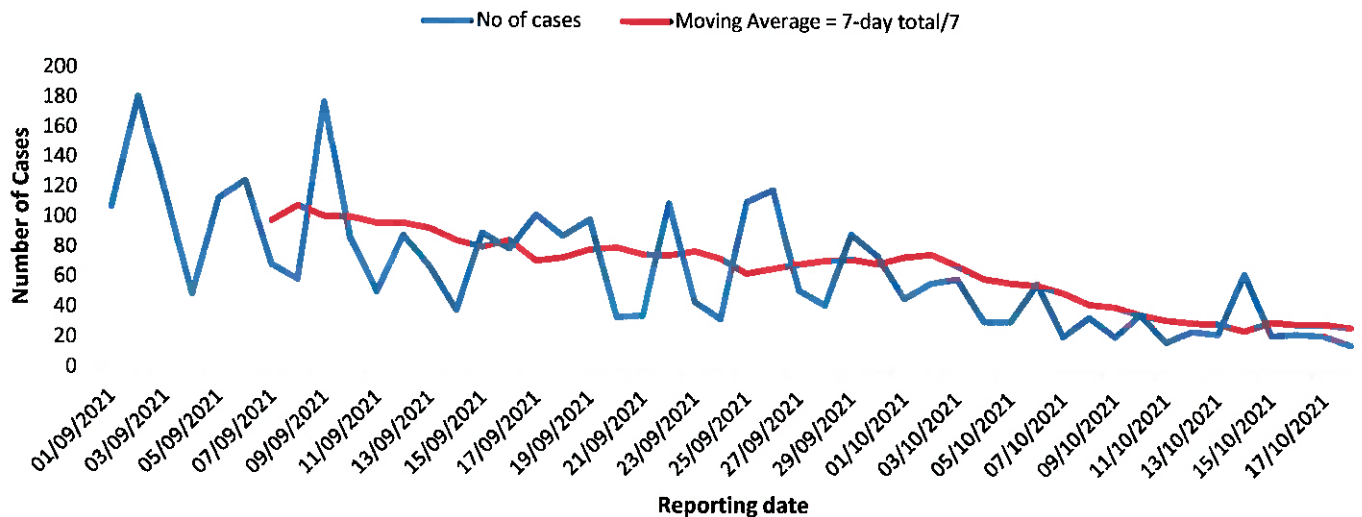


Figure 4: The 7 days moving average line chart for confirmed COVID-19 cases, 18 October 2021

- The laboratory testing capacity has been enhanced; with a total of fifteen (15) laboratories carrying out the testing of samples: NIP, Path-Care, UNAM Molecular, Central Veterinary Laboratory, Namib Poultry, NAMDEB, NamPath, Namibia Central Pathology, DiagnoLab, High Care, Alpha Medical Laboratory, Des-Jo Medical Test Centre, ProQuest Diagnostic Laboratory, MAXI and Medlink Laboratory Services.
- To date, **734 815** tests (including **14 318** re-tests) have been conducted by authorized laboratories.
- Since the beginning of the outbreak, **145 794** contacts of confirmed cases have been identified, **34** new contacts were identified within the last 24 hours from 13 regions.
- Cumulatively, **143 137** contacts have completed their monitoring period, while **288** contacts are lost to follow-up and a total of **25 328 (20%)** contacts of confirmed cases have tested positive.
- Today, **764 (86%)** out of **891** active contacts were monitored.

Table 4: COVID-19 specimen recorded at the Laboratories 17 October 2021

| VARIABLES | TOTAL |
|--|---------|
| Total samples received by the Laboratory | 734 932 |
| Total samples tested | 720 497 |
| Total samples re-tested | 14 318 |
| Total positive results | 128 395 |
| Total negative results | 592 051 |
| Total samples discarded | 117 |
| Invalid results | 0 |
| Total pending results | 7 |
| Indeterminant/Inconclusive | 7 |
| Suspected cases in 24 hours (excluding re-tests) | 1 157 |

Table 5: Summary of COVID-19 vaccine doses administered, 18 October 2021

| Region | Cumulative no. of persons vaccinated with doses of Sinopharm, AstraZeneca, Sputnik V, Pfizer and Jassen & Johnson | | Targeted Population | Vaccination Coverage (%) | Cumulative no. of Healthcare Workers vaccinated with doses of Sinopharm, AstraZeneca, Sputnik V, Pfizer and Jassen & Johnson | |
|--------------|---|------------------|---------------------|--------------------------|--|------------------|
| | 1 st doses | Fully vaccinated | | | 1 st doses | Fully vaccinated |
| Erongo | 31 467 | 25 459 | 121 682 | 21% | 1 099 | 838 |
| Hardap | 19 004 | 14 635 | 56 741 | 26% | 470 | 389 |
| Karas | 13 477 | 10 929 | 55 489 | 19% | 626 | 353 |
| Kavango East | 15 637 | 10 219 | 117 665 | 8% | 948 | 812 |
| Kavango West | 8 066 | 7 016 | 29 228 | 22% | 341 | 334 |
| Khomas | 78 821 | 61 415 | 286 641 | 21% | 3 568 | 2 589 |
| Kunene | 18 375 | 12 866 | 66 499 | 19% | 623 | 477 |
| Ohangwena | 20 641 | 15 154 | 164 102 | 9% | 688 | 570 |
| Omaheke | 14 195 | 9 344 | 51 765 | 18% | 350 | 248 |
| Omusati | 20 348 | 15 633 | 139 451 | 11% | 854 | 666 |
| Oshana | 17 645 | 14 039 | 126 374 | 11% | 1 343 | 1 078 |
| Oshikoto | 16 717 | 13 188 | 124 395 | 10% | 763 | 689 |
| Otjozondjupa | 23 381 | 18 782 | 97 903 | 19% | 762 | 575 |
| Zambezi | 4 726 | 3 869 | 63 106 | 6% | 517 | 511 |
| Total | 302 500 | 232 548 | 1 501 041 | 15% | 12 952 | 10 129 |

PUBLIC HEALTH ACTION (S)

- The COVID-19 vaccination programme is ongoing throughout the country.
- Public Health measures continue to be enforced as the situation is closely monitored.
- The government and development partners continue to prioritize the continuation of essential health services.

CHALLENGES

- Slow vaccine uptake among members of the public, and circulation of anti-vaccination information.
- Poor adherence to COVID-19 Infection Prevention and Control (IPC) measures by the general public.

RECOMMENDATIONS

- Encourage the public to get vaccinated and strengthen community health awareness to encounter anti-vaccination information in circulation.
- Continue to give awareness on the importance of adhering to COVID-19 IPC measures; with the involvement of the Security Cluster.

APPROVED



INCIDENT MANAGER
18 OCTOBER 2021



SECRETARIAT

For enquiries, please contact
Namibia Public Health Emergency Operations Centre;
 PHEOC@mhs.gov.na
 0800 100 100
 0851 100 100