

# South Sudan

**Integrated Disease surveillance and response (IDSR)**

**Epidemiological Bulletin Week 35, 2021 ( August 30- August 05)**





- Hepatitis E virus case surge reported in Bentiu IDP settlement since week 19, 2021, total of 1,147 cases with 23 deaths (CFR 0.07%)
- In week 35, IDSR reporting timeliness was 80% and completeness was 93% while timeliness was 92% and completeness 94% for EWARN sites.
- Of the 70 alerts in week 35; 77% were verified with malaria (19), measles (1), AWD (17), ARI (10) and ABD (15) were the most frequent alerts.
- Malaria remains the top cause of morbidity and accounted for 103,348 cases (66.1% of OPD cases).
- Of the 3,082 COVID-19 alerts detected, 2,872 (97.2%) have been verified with 11,520 confirmed cases and 120 deaths ( CFR of 1.04%).
- Other hazards include floods (unseasonal) in over 11 counties.

# SURVEILLANCE PERFORMANCE



For the Integrated Disease Surveillance (IDSR)  
network and Early warning alert and response  
network (EWARN)



# IDSR timeliness performance at State level for week 35 & 34 of 2021



Completeness States Ranking	States	Number of reporting sites	No. of HFs Reported on Time in WK 35	Timeliness Percentage of WK 35	No. of HFs Reported on Time in WK 34	Timeliness Percentage of WK 34
1st	WES	213	213	100%	213	100%
2nd	CES	117	106	91%	105	90%
3rd	NBGZ	114	94	82%	97	85%
4th	Lakes	113	93	82%	113	100%
5th	WBGZ	78	63	81%	55	71%
6th	Warrap	134	108	81%	83	62%
7th	Jonglei	107	86	80%	87	81%
8th	EES	143	95	66%	107	75%
9th	Unity	92	54	59%	54	59%
10th	Upper Nile	109	63	58%	56	51%
	South Sudan	1220	975	80%	970	80%

## KEY

	<60%	Poor
	61%-79%	Fair
	80%-99%	Good
	100%	Excellent

The timeliness of IDSR reporting (supported by EWARS mobile) at health facility level in week 35, 2021 & 34, 2021 were both 80%. 7 states were above the target of 80%

**Reporting challenges:** Insecurity, internet access and new partners

# IDSR completeness performance at State level for week 35 & 34 of 2021



Completeness States Ranking	States	Number of reporting sites	No. of HFs Reported regardless of time in WK 35	Completeness Percentage of WK 35	No. of HFs Reported regardless of time in WK 34	Completeness Percentage of WK 34
1st	Lakes	113	113	100%	113	100%
2nd	WBGZ	78	78	100%	78	100%
3rd	WES	213	213	100%	213	100%
4th	NBGZ	114	111	97%	114	100%
5th	EES	143	137	96%	138	97%
6th	CES	117	109	93%	110	94%
7th	Jonglei	107	96	90%	97	91%
8th	Warrap	134	115	86%	117	87%
9th	Unity	92	78	85%	86	93%
10th	Upper Nile	109	87	80%	93	85%
	<b>South Sudan</b>	<b>1220</b>	<b>1137</b>	<b>93%</b>	<b>1159</b>	<b>95%</b>

## KEY

	<60%	Poor
	61%-79%	Fair
	80%-99%	Good
	100%	Excellent

The completeness of IDSR reporting (supported by EWARS mobile) at health facility level was **93%** in week 35 and **95%** in week 34, 2021. 9 states were above the target of 80%





# Surveillance: EWARS timeliness performance indicator by partner for week 34 and 33 of 2021

Partner	HF's	Reporting	Performance		
PARTER	Number of reporting sites	# of reports received on Time in Week 35	Timeliness of Week 35	# of reports received on Time in Week 34	Timeliness of Week 34
CMD	1	1	100%	1	100%
IHO	2	2	100%	2	100%
IRC	1	1	100%	1	100%
TADO	4	4	100%	4	100%
TRI-SS	2	2	100%	2	100%
IOM	10	10	100%	10	100%
World Relief	2	2	100%	1	50%
ALIMA	3	3	100%	0	0%
SSHCO	1	1	100%	0	0%
RHS	1	1	100%	0	0%
UNIDOR	2	2	100%	0	0%
UNH	10	10	100%	0	0%
IMC	24	23	96%	2	8%
HFD	6	5	83%	3	50%
MSF-H	7	5	71%	3	43%
MSF-E	6	4	67%	4	67%
HFO	2	1	50%	2	100%
<b>TOTAL</b>	<b>84</b>	<b>77</b>	<b>92%</b>	<b>35</b>	<b>42%</b>

Timeliness for EWARS partners supported sites were at **92%** in week **35, 2021** compared to **82%** at week **34, 2021**



# Surveillance: EWARS completeness performance indicator by partner for week 34 and 33of 2021

Partner	HFs	Reporting	Performance		
PARTER	Number of reporting sites	# of reports received regardless of Time in Week 35	Completeness of Week 35	# of reports received regardless of Time in Week 34	Completeness of Week 34
ALIMA	3	3	100%	3	100%
CMD	1	1	100%	1	100%
IHO	2	2	100%	2	100%
IRC	1	1	100%	1	100%
SSHCO	1	1	100%	1	100%
TADO	4	4	100%	4	100%
TRI-SS	2	2	100%	2	100%
RHS	1	1	100%	1	100%
IOM	10	10	100%	10	100%
HFO	2	2	100%	2	100%
HFD	6	6	100%	6	100%
UNH	10	10	100%	9	90%
World Relief	2	2	100%	1	50%
UNIDOR	2	2	100%	1	50%
IMC	24	23	96%	23	96%
MSF-H	7	5	71%	5	71%
MSF-E	6	4	67%	6	100%
<b>TOTAL</b>	<b>84</b>	<b>79</b>	<b>94%</b>	<b>78</b>	<b>93%</b>

Completeness for EWARS partners supported sites was at **94%** in week 35, 2021 compared to **93%** at week 34, 2021



# EVENT-BASED SURVEILLANCE



Alert management including detection; reporting;  
verification; risk assessment; & risk  
characterization





State	Acute jaundice syndrome	Acute Respiratory Infections (ARI)	Acute Watery Diarrhoea	Bloody Diarrhoea	Malaria	Measles	EBS	Covid-19	Total alerts
CES		1	2	2	1			1	7
EES		1	4	6					11
Unity	1	2	1	1	5			2	12
Upper Nile		3	4	3	3				13
Warrap					1			1	2
WBGZ			6	3	2	1	1		13
WES		3			7			2	12
<b>Total alerts</b>	<b>1</b>	<b>10</b>	<b>17</b>	<b>15</b>	<b>19</b>	<b>1</b>	<b>1</b>	<b>6</b>	<b>70</b>

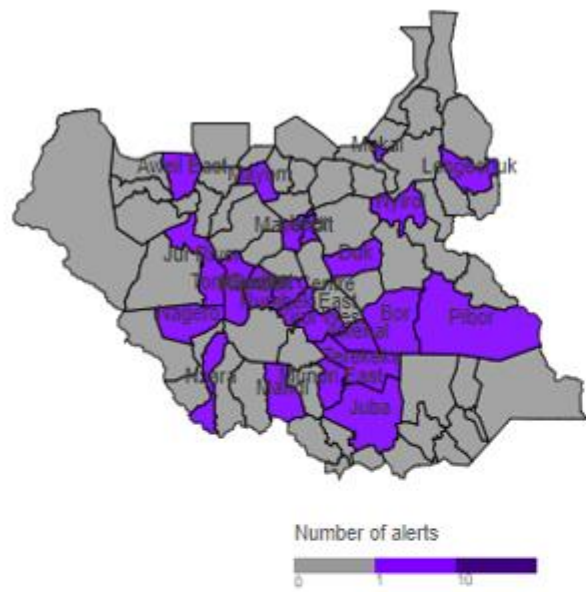
### During this week:

- **10 ARI alert:** 1 from CES, 1 from EES, 2 from Unity State, 3 from Upper Nile State, 3 from WES
- **17 AWD alert:** 2 from CES, 4 from EES, treated for diarrhea, 1 from Unity treated as normal diarrhea, 4 from Upper Nile State, 6 from WBGZ
- **15 ABD alerts:** 2 from CES, 6 from EES, 1 from Unity 3 from Upper Nile, and 3 from WBGZ
- **19 Malaria alerts:** 1 from CES, 5 from Unity State, 3 from Upper Nile State, 1 from Warrap State, 2 from WBGZ State, 7 from WES, all these are due to the high increase of malaria cases in the Country.
- **6 COVID-19 alerts:** 1 from CES, 2 from Unity, 1 from Warrap State and 2 from WES
- **1 EBS alert:** from WBGZ, Wau County in Wau Teaching Hospital
- **1 AJS alert:** 1 from Unity State in Rubkona County, Bentiu PoC Hospital
- **1 Measles alert:** from WBGZ State, Wau County, Aljazeera PHCU investigated, and sample collected for testing.

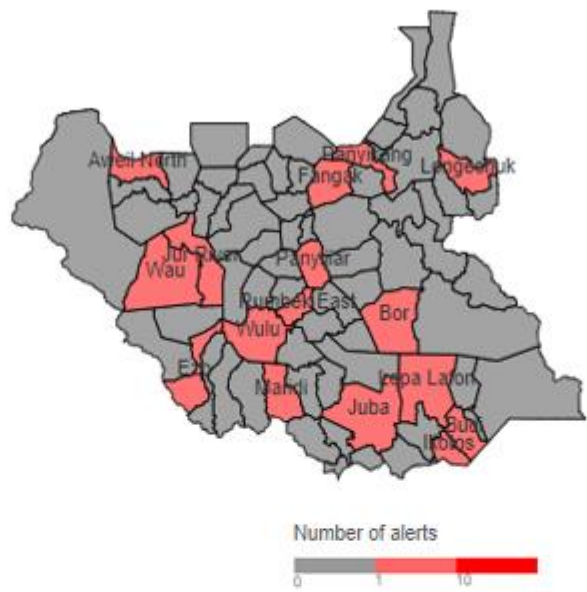


# Alert: Map of key disease alerts by county of week 35 of 2021

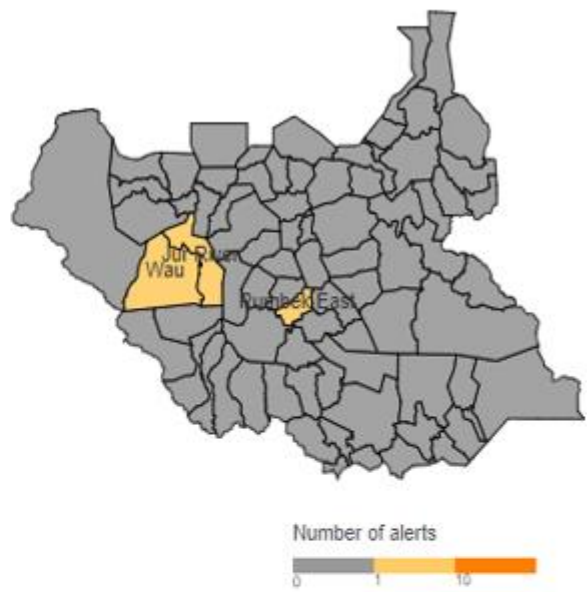
Map 2a | Malaria (W35 2021)



Map 2b | Bloody diarrhoea (W35 2021)



Map 2c | Measles (W35 2021)



W35	Cumulative (2021)	
<b>0</b>	<b>10</b>	Low risk
<b>9</b>	<b>9</b>	Medium risk
<b>0</b>	<b>53</b>	High risk
<b>0</b>	<b>149</b>	Very high risk

<b>77%</b>	<b>89%</b>	% verified
<b>0%</b>	<b>0%</b>	% auto-discarded
<b>0%</b>	<b>4%</b>	% risk assessed
<b>0%</b>	<b>3%</b>	% requiring a response

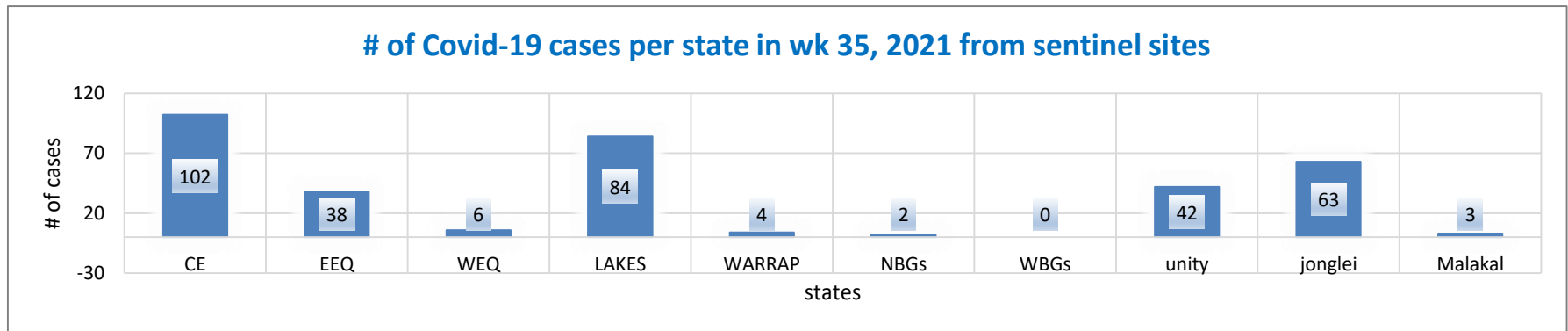
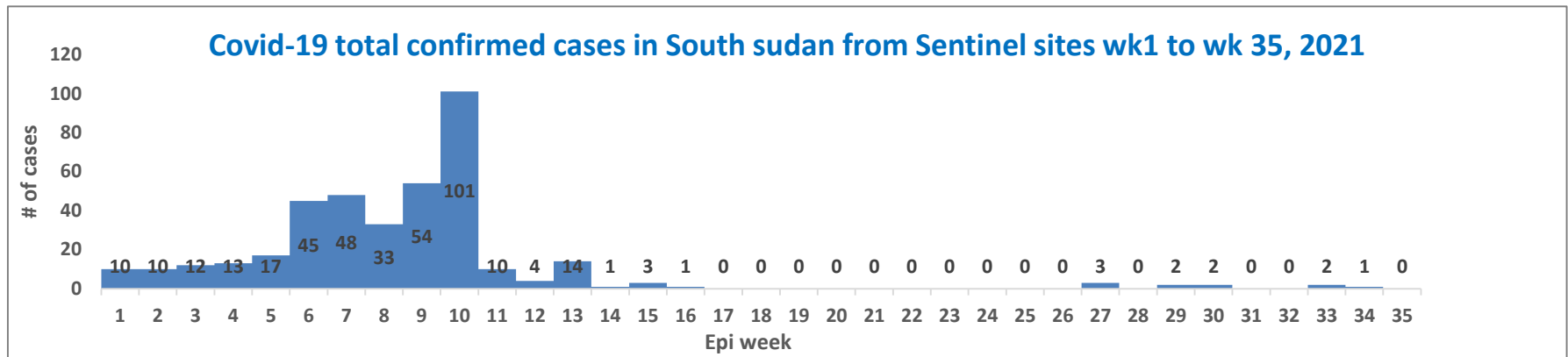
# SUSPECTED OUTBREAKS



Major suspected outbreaks in South Sudan in  
2020



# Routine Sentinel Surveillance | Human Influenza



- As of 28th April 2021, a total of 166 samples were collected from three sentinel sites in Juba with 156 samples testing negative for influenza; one (1) positive for COVID-19; and six (8) positive for influenza B (with four (4) sub-typed as Victoria while the other two (2) are pending sub-typing)
- There are currently 13 Covid-19 designated sentinel surveillance sites in Juba and States Hospitals that are collecting epidemiological data and samples from Covid-19/ILI/SARI cases. A total of 7757 samples have been collected in 2021 with 550 (7.0%) being positive for COVID-19 from sentinel sites.

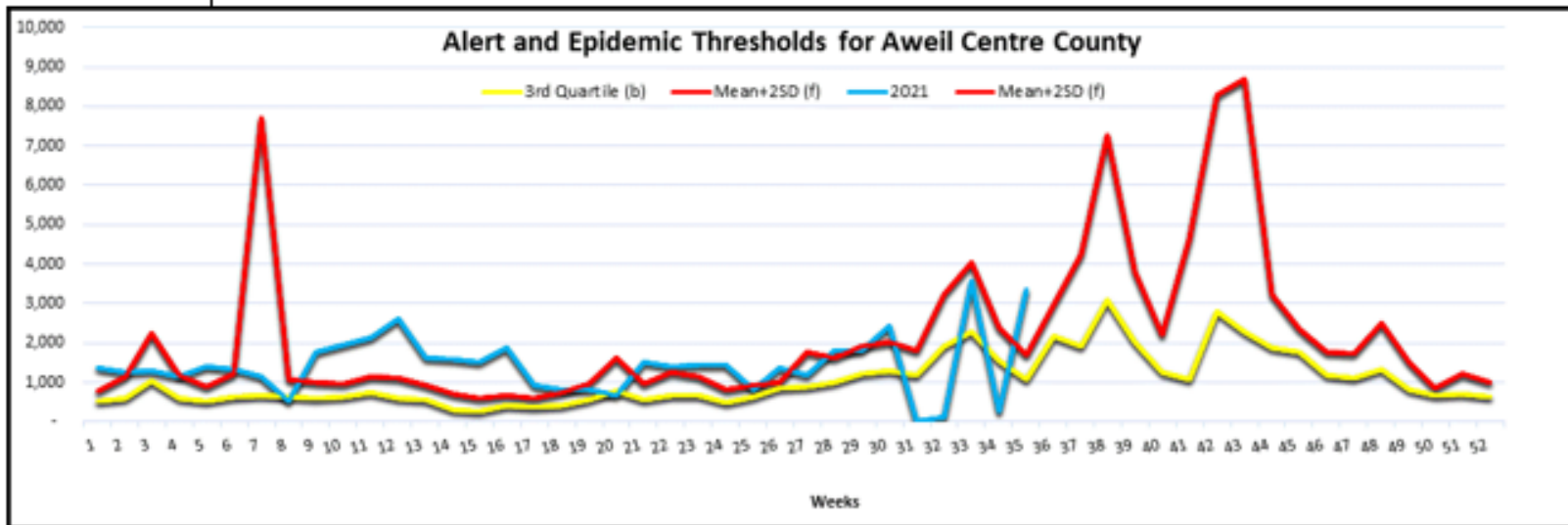


Malaria was the leading cause of morbidity and mortality, accounting for **40.7%** of all morbidities and **66.1%** of all Mortalities this week 39.

**3** counties with malaria trends which have exceeded the threshold (third quartile of trends for the period 2013-2017)

1. NBGZ State (Aweil Center, Aweil South)
2. WBGZ State (Wau)

Aweil Center



# ACTIVE OUTBREAKS AND PUBLIC HEALTH EVENTS



Brief epidemiological description and public health response for active outbreaks and public health events`





- An estimated 90 000 people have been affected across 11 counties (**Ayod, Fangak, Renk, Guit, Gogrial West, Aweil South, Mayendit, Koch, Nhaildu-Rubkona and Malakal from Fangak**).
- A high-level humanitarian and government mission visited Ayod and Canal Counties on 4 August 2021 to witness the impact of the flooding in the counties.
- The heavy rains have damaged homes and agricultural fields forced families and their livestock to move to higher grounds and limited access to health and other essential services.
- The humanitarian community is responding by conducting assessments to outline the needs and damages, repositioning of supplies, construction of dykes and acquiring alternative transport means in affected locations.
- In Greater Pibor Administrative Area, an early warning and disaster management committee was formed as part of the flood contingency plan.
- The Inter-cluster coordination group is currently finalizing an intersectoral response strategy that will guide the response measures of various clusters and stakeholders.
- There is a need for funding to support responding partners to institute ensure timely and life-saving interventions.





- Food insecurity remains a major concern in South Sudan where **7.2 million** people are projected to face high levels of acute (**IPC Phase 3+**) food insecurity during April-July 2021 as per the Integrated Food Security Phase Classification (IPC) report released in December 2020.
- In the six most affected counties (**Pibor, Akobo, Aweil South, Tonj North, Tonj South and Tonj East**), some **820 000** people were projected to face a crisis or worse levels of food insecurity while over **108 000** people were projected to be in **IPC Phase 5** catastrophe during the lean season.
- The humanitarian community and government has been responding in the affected counties since December 2020 through scaling up of access to life-saving food security and livelihood, health and nutrition, protection and WASH services and assistance.
- WHO and Health Cluster partners aim at reducing preventable mortality and morbidity by scaling up access to basic health and nutrition services, enhancing capacities of disease surveillance, prevention, detection and response to infectious disease outbreaks, and building resilience of the health system.

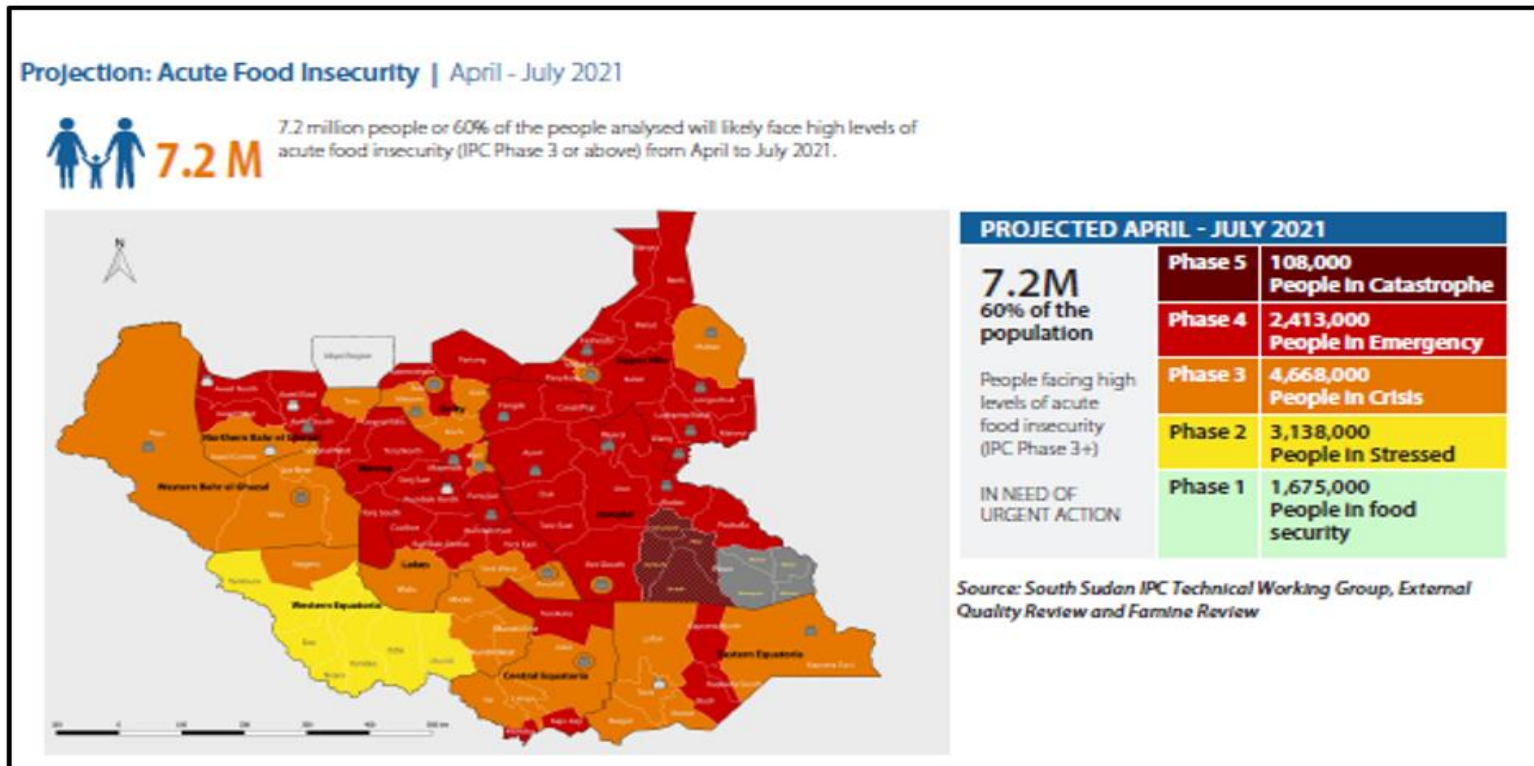


Figure 1: population estimates by IPC Phase and State based on the compilation of the South Sudan IPC Technical Working Group

- Frequent sub-national violence, attacks on humanitarian workers and properties, inadequate funding for essential supplies and weak health systems have continued to impede humanitarian operations in the priority locations.
- A 13% reduction in food prices was reported in July 2021 as compared to the previous two months.



### Ongoing Response Activities:

- Partners provided primary health and nutrition through static and mobile health facilities. The emergency health partners funded by different donors are supporting to reach locations without functional health facilities. Since the beginning of 2021, 363 143 consultations have been conducted in the six priority counties as at end of week 30.
- WHO supported emergency partners operating in the six priority counties with the essential emergency supplies as the core pipeline manager, 249 interagency health kits (can support 249 000 people for three months), 106 pneumonia kits, 20 severe acute malnutrition with medical complication (SAM/MC) kits, and 45 cholera investigation kits to the responding partners in the priority counties.
- WHO supported the state ministries to capacity build 42 health workers on management of severe acute malnutrition with medical complications in Tonj North, Tonj East and Tonj South counties; Total of 116 (31 in Pibor, 45 in Akobo East, 40 in Aweil South) health workers and rapid response teams to strengthen the Integrated Disease Surveillance and Response (IDSR); Supported training of 40 participants on community-based surveillance in Aweil South. Further, a refresher training was conducted for 78 community surveillance focal points in Pibor and Akobo East Counties.

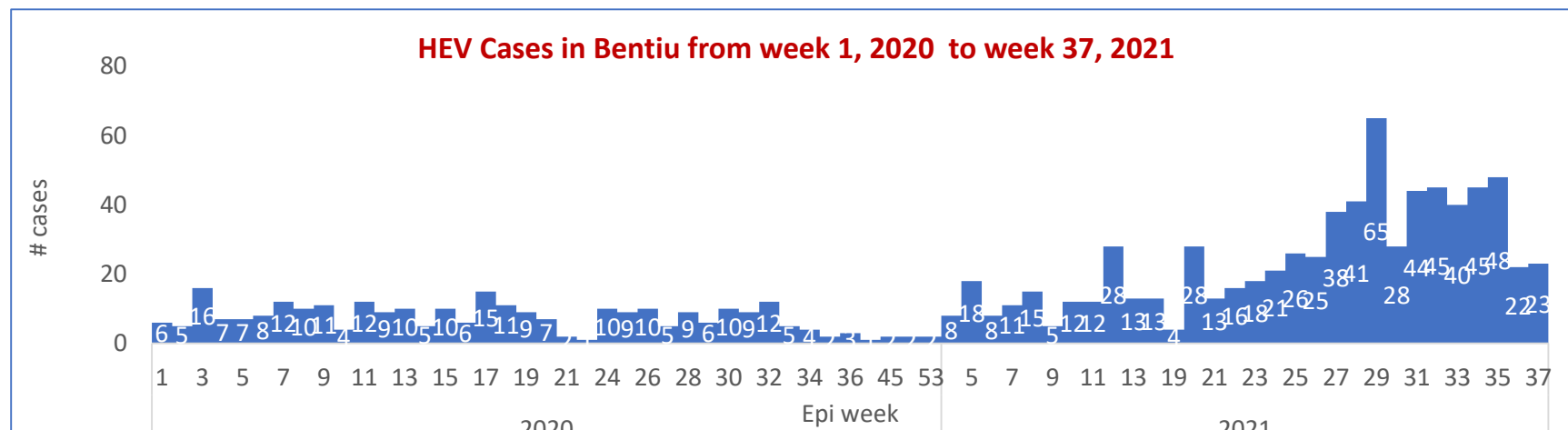


Aetiological agent	Location (county)	Date first reported	New cases since last bulletin	Cumulative cases to date (attack rate %)	Interventions			
					Case management	Vaccination	Health promotion	WASH
<b>Ongoing epidemics</b>								
Hepatitis E	Bentiu PoC	03/01/2018	23	1147 (0.020)	Yes	No	Yes	Yes
COVID-19	35 counties	05/4/2020	74	11,195 (0.006)	yes	yes	yes	yes
cVDPV2	25 counties	11/06/2020 18/09/2020	27	59	Yes	Yes	Yes	Yes





## Hepatitis E, Bentiu IDP camp (1)

**Descriptive epidemiology**

- The persistent transmission of HEV in Bentiu IDP camp continues with **1,147** cases since beginning of 2019
- There were (**23**) new cases reported in week 37, 2021
- All the cases were managed as outpatient cases except for seven cases who were admitted
- 9 deaths reported in 2019, 2020 and 2021
- 48% are female and 52% are male.
- Age group less than 15 years had the most cases with ( 62%) cases.
- There is risk of adverse outcomes women are infected in their last trimester
- Use of unsafe drinking water is likely to be source of infection
- Up to week 37, 2021; a cumulative of 1,086 cases of HEV in Bentiu IDP camp including 9 deaths (CFR 0.07%)
- There is an upsurge of HEV cases since the beginning of 2021. The upsurge is attributed to declining WASH in the IDP camp as the daily workers and hygiene promoters have not been working for months now amidst reduced funding for WASH activities in IDP camp.



## Ongoing Response

- The HEV taskforce has been activated to implement comprehensive HEV control interventions to interrupt transmission
- HEV strategy has been developed to guide implementation and mobilization of resources to support the response
- Deployment of WASH partners to initiate emergency WASH interventions including;
- Hygiene promotion; water quality surveillance; solid waste management etc.
- **Microplanning underway to import and deploy HEV vaccines targeting 57,000 individuals aged 16-40 years with two doses of HEV vaccine this year. Third dose to follow in the second quarter of 2022.**



Aetiological agent	Location (county)	Date first reported	New cases since last bulletin	Cumulative cases to date (attack rate %)	Interventions			
					Case management	Vaccination	Health promotion	WASH
<b>Controlled epidemics</b>								
Measles	Juba	21/11/2019	NR	6( 0.1667)	Yes	No	Yes	N/A
Measles	Tonj East	12/12/2019	NR	61(0.98)	yes	Yes	Yes	N/A
Measles	Bor	17/01/2020	NR	14(0.214)	yes	No	yes	N/A
Measles	Jebel Boma	10/12/2019	NR	96(0.063)	yes	No	Yes	N/A
Measles	Kapoeta East	18/01/2020	NR	16(0.625)	yes	No	Yes	N/A
Measles	Aweil East	29/12/2019	NR	664 (0.127)	Yes		No	Yes
Measles	Pibor	27/1/2020	NR	355 (0.0028)	Yes		Yes	Yes
Measles	Wau	5/1/2020	NR	39 (0.051)	Yes		Yes	Yes
Measles	Ibba	25/1/2020	0	55 (0.36)	Yes		Yes	Yes
Rubella	Tambura	11/1/2021	0	23 (0.13)	Yes		No	Yes
Rubella	Nagero	01/03/ 20201	0	5 (0.25)	Yes		No	Yes



# COVID-19 Updates





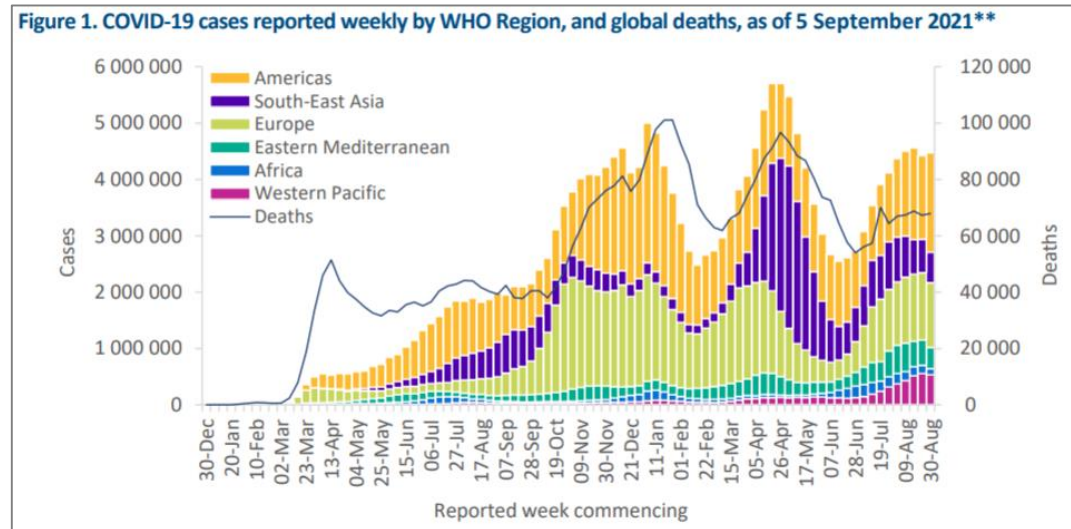
# COVID-19 Virus Situation Summary



Situation update as of 7<sup>th</sup> September 2021

- **Globally, 7th September 2021**, there have been **220 217 572 confirmed cases** of COVID-19, including **4 558 806 deaths**, reported to WHO. As of **20 August 2021**, a total of **4,562,256,778 vaccine doses** have been administered.

- **In Africa, as of 7th September 2021**, there have been **5 718 668 confirmed cases** of COVID-19, including **136 976 deaths** reported to WHO



WHO: <https://www.who.int/health-topics/coronavirus>



- Ninety-nine new cases were identified in Week 35, bringing the cumulative number of confirmed cases to 115261, including 410 imported cases mainly from South Sudanese returnees (238), Uganda (53), and Kenya (19).
- At the end of Week 35, 35 (43.8%) of the 80 counties in the country have a confirmed case. There was no county with a first confirmed case this week
- This week showed a 16.2% increase in the number of reported cases compared to Week 34. This is fifth consecutive week of recorded increase in new cases
- Average positivity yields have been increasing in the last five epi weeks, reaching 3.3% in Week 35
- Fourteen alerts tested positive for COVID-19 this week. Cumulatively, 30822 alerts have been reported, of which 2954 (95.8%) have been verified, and 2872 (97.2%) of the verified alerts were sampled.
- Cumulatively, 17460 contacts have been listed and followed up since the first confirmed case was reported in April 2020, of which 15816 (90.6%) have completed follow-up.
- Different SARS-CoV-2 lineages were detected in South Sudan. The first variant of interest (VOI) detected in the South Sudan samples is the **A.23.1** lineage followed by lineages **B.1.525**; **B.1.35**; **B.1.1.7** and lastly lineage **B.1.617.2**
- South Sudan has exhausted its first batch of vaccines from the COVAX facility in Week 28. The second batch is expected in late-August. So far, South Sudan has vaccinated 57096 people, of whom 4763 are fully vaccinated and 52313 have received one dose.



# Overall Conclusions and Recommendations



## Conclusion

- The overall performance of IDSR and EWARNS reporting sites in week 35, 2021 is above the target of 80% in both Timeliness and Completeness
- **11,520** confirmed COVID-19 cases (case fatality rate of 1.05%) 120 deaths. Total **17,460** contacts identified, quarantined, & undergoing follow up as of week 35, 2021
- Given the COVID-19 pandemic, and the third pandemic wave that is currently underway in Africa, resurgence monitoring and response readiness is being enhanced for all the pillars including surveillance, laboratory, case management, infection prevention and control, border health, and community engagement to emphasize adherence to public health social measures including vaccination of health workers, high risk groups, and the general population

# Recommendations

- All partners should support CHDs & State Ministries of Health to undertake IDSR/EWARN reporting
- All health facilities should report, and conduct case-based investigation of suspect measles cases and routine measles immunization should be strengthened in all counties
- Strengthen capacities for COVID-19 resurgence monitoring and response readiness through identifying and testing suspect cases (including genomic sequencing), isolating and effective management of confirmed cases, contact tracing, community engagement, COVID-19 vaccination, and strengthening adherence to PHSMs.

**Thanks to the State Surveillance Officers, County Surveillance Officers and Health Facility in-charges for sharing the weekly IDSR data**

**Thanks to all partners for supporting IDSR weekly reporting and sharing the line lists**

**To access the IDSR bulletins for 2020 use the link below:**

**<https://www.afro.who.int/publications/south-sudan-weekly-disease-surveillance-bulletin-2020>**





# IDSR timeliness & completeness performance at county level for week 35 of 2021 (1)

STATE	COUNTY	Number of reporting sites	No. of HF's Reported on Time in WK 35	Timeliness Percentage of WK 35	No. of HF's Reported regardless of time in WK 35	Completeness Percentage of WK 35	No. of HF's Reported regardless of time in WK 34	Completeness Percentage of WK 34
Lakes	Cueibet	15	15	100%	15	100%	15	100%
Lakes	Yirol West	12	12	100%	12	100%	12	100%
NBGZ	Aweil Centre	15	15	100%	15	100%	15	100%
WBGZ	Wau	28	28	100%	28	100%	28	100%
CES	Juba	46	46	100%	46	100%	46	100%
Lakes	Rumbek East	24	23	96%	24	100%	24	100%
Lakes	Rumbek Centre	23	22	96%	23	100%	23	100%
NBGZ	Aweil South	11	10	91%	10	91%	10	91%
NBGZ	Aweil West	27	24	89%	27	100%	27	100%
CES	Yei	17	15	88%	16	94%	16	94%
NBGZ	Aweil North	25	22	88%	25	100%	25	100%
CES	Terekeka	20	17	85%	17	85%	17	85%
CES	Kajo Keji	17	14	82%	15	88%	16	94%
WBGZ	Jur River	35	28	80%	35	100%	35	100%
CES	Morobo	5	4	80%	4	80%	4	80%
Lakes	Wulu	14	11	79%	14	100%	14	100%
Lakes	Rumbek North	7	5	71%	7	100%	7	100%
CES	Lainya	16	10	63%	11	69%	11	69%
NBGZ	Aweil East	37	23	62%	34	92%	37	100%
WBGZ	Raja	15	7	47%	15	100%	15	100%
Lakes	Yirol East	11	5	45%	11	100%	11	100%
Lakes	Awerial	7	0	0%	7	100%	7	100%

STATE	COUNTY	Number of reporting sites	No. of HF's Reported on Time in WK 35	Timeliness Percentage of WK 35	No. of HF's Reported regardless of time in 35	Completeness Percentage of WK 35	No. of HF's Reported regardless of time in WK 34	Completeness Percentage of WK 34
Unity	Abiemnhom	4	4	100%	4	100%	4	100%
Unity	Mayendit	12	12	100%	12	100%	12	100%
WES	Nzara	20	20	100%	20	100%	20	100%
WES	Nagero	10	10	100%	10	100%	10	100%
WES	Mundri West	21	21	100%	21	100%	21	100%
WES	Maridi	26	26	100%	26	100%	26	100%
WES	Ibba	11	11	100%	11	100%	11	100%
WES	Mundri East	19	19	100%	19	100%	19	100%
WES	Yambio	42	42	100%	42	100%	42	100%
WES	Ezo	27	27	100%	27	100%	27	100%
WES	Mvolo	11	11	100%	11	100%	11	100%
WES	Tambura	28	26	93%	26	93%	27	96%
Unity	Rubkona	13	10	77%	12	92%	11	85%
Unity	Leer	11	7	64%	7	64%	8	73%
Unity	Mayom	14	8	57%	9	64%	13	93%
Unity	Koch	7	4	57%	4	57%	6	86%
Unity	Panyijiar	15	8	53%	14	93%	15	100%
Unity	Pariang	11	1	9%	10	91%	11	100%
Unity	Guit	7	0	0%	6	86%	6	86%





# IDSR timeliness & completeness performance at county level for week 35 of 2021 (2)

STATE	COUNTY	Number of reporting sites	No. of HFs Reported on Time in WK 35	Timeliness Percentage of WK 35	No. of HFs Reported regardless of time in WK 35	Completeness Percentage of WK 35	No. of HFs Reported regardless of time in WK 34	Completeness Percentage of WK 34
Jonglei	Pibor	7	7	100%	7	100%	7	100%
Jonglei	Pochalla	7	7	100%	7	100%	7	100%
EES	Torit	20	20	100%	20	100%	18	90%
EES	Kapoeta South	10	9	90%	10	100%	10	100%
EES	Lopa Lafon	18	16	89%	18	100%	18	100%
Jonglei	Fangak	17	13	76%	15	88%	15	88%
EES	Ikotos	27	20	74%	27	100%	27	100%
Jonglei	Duk	15	11	73%	11	73%	11	73%
Jonglei	Twic East	11	8	73%	8	73%	8	73%
Jonglei	Nyirrol	10	7	70%	7	70%	6	60%
EES	Kapoeta East	12	8	67%	10	83%	10	83%
Jonglei	Bor	35	21	60%	21	60%	21	60%
EES	Magwi	22	12	55%	20	91%	20	91%
EES	Budi	21	10	48%	17	81%	20	95%
Jonglei	Canal Pigi	12	4	33%	4	33%	4	33%
Jonglei	Ayod	15	4	27%	10	67%	12	80%
Jonglei	Akobo	8	2	25%	2	25%	2	25%
Jonglei	Uror	8	1	13%	2	25%	2	25%
EES	Kapoeta North	16	0	0%	15	94%	15	94%

STATE	COUNTY	Number of reporting sites	No. of HFs Reported on Time in WK 35	Timeliness Percentage of WK 35	No. of HFs Reported regardless of time in WK 35	Completeness Percentage of WK 35	No. of HFs Reported regardless of time in WK 34	Completeness Percentage of WK 34
Warrap	Tonj North	14	14	100%	14	100%	14	100%
Warrap	Tonj South	14	14	100%	14	100%	14	100%
Upper Nile	Baliet	4	4	100%	4	100%	4	100%
Upper Nile	Fashoda	16	15	94%	14	88%	14	88%
Warrap	Tonj East	14	13	93%	14	100%	14	100%
Warrap	Gogrial West	31	28	90%	31	100%	31	100%
Upper Nile	Maiwut	5	4	80%	5	100%	5	100%
Upper Nile	Akoka	5	4	80%	5	100%	5	100%
Upper Nile	Longechuk	9	7	78%	9	100%	9	100%
Warrap	Twic	26	20	77%	20	77%	19	73%
Upper Nile	Makal	7	5	71%	5	71%	7	100%
Upper Nile	Panyikang	3	2	67%	3	100%	3	100%
Warrap	Gogrial East	15	10	67%	11	73%	13	87%
Upper Nile	Maban	17	10	59%	11	65%	13	76%
Upper Nile	Ulang	14	7	50%	7	50%	8	57%
Warrap	Abyei	10	4	40%	6	60%	8	80%
Upper Nile	Luakpiny Nasir	12	3	25%	10	83%	11	92%
Upper Nile	Manyo	10	2	20%	8	80%	8	80%
Upper Nile	Melut	8	0	0%	6	75%	6	75%
Upper Nile	Renk	11	0	0%	0	0%	0	0%



States	Number of reporting sites	Supporting Partners
WES	213	AMREF, World Vision, CUAMM, CDTY, OPEN
CES	117	HLSS, SSUHA, Healthnet TPO, IHO,GOAL,TRI-SS,THESO,IMA,SSHCO
NBGZ	133	Malaria Consortium, Health net TPO, IRC, CEDS, IHO
WBGZ	78	Cordaid, Healthnet TPO, CARE International,IOM,ALIMA
Jonglei	107	Nile Hope, MDM, JDF, Livewell, CMD, HFO, EDA, CRADA, Malaria Consortium, CMA,ACSO,MEDAIR,CARE,World Relief,UNH
EES	142	Cordaid, HLSS, CCM
Unity	94	Cordaid, UNIDOR, IRC, CHADO, CARE International, CRADA, CASS,IOM,Samaritan's Purse
Warrap	123	GOAL, CCM, WVI, Malaria Consortium, UNKEA, Save the Children, MSF
Upper Nile	112	Cordaid, WVI, RI, IMC, NIDO, UNKEA, MC, SSAID,CORDAID ,IOM,HFD,TADO
Lakes	113	Doctors with Africa (CUAMM)

## This bulletin is produced by the Ministry of Health with Technical support from WHO

For more help and support, please contact:

### Dr. John Rumunu

Director General Preventive Health Services  
Ministry of Health  
Republic of South Sudan  
Telephone: +211924767490  
Email: ori.moiga@gmail.com

### Mr. Angelo Majak Goup

A/Director, Emergency Preparedness and Response  
Ministry of Health, RSS  
Tell: +211929830530  
Emails: majakdegoup99@gmail.com

### IDSAR Bulletin Editorial Team

1. Mr. Ajak Ater, MoH - Email: ajakater014@gmail.com
2. Ms. Sheila Baya, WHO - Email: bayas@who.int
3. Mr. Robert Lasu Martin, WHO - Email: lasur@who.int
4. Mrs. Rose Dagama, WHO - Email: dagamaa@who.int
5. Dr. Abraham Adut, WHO - Email: abenegoa@who.int
6. Dr. Alice Igale Lado, WHO - Email: ladua@who.int
7. Dr. Joseph Wamala, WHO - Email: wamalaj@who.int
8. Dr. Argata Guracha Guyo, WHO - Email: guyo@who.int

## Notes

WHO and the Ministry of Health gratefully acknowledge the surveillance officers [at state, county, and health facility levels], health cluster and health pooled fund (HPF) partners who have reported the data used in this bulletin. We would also like to thank ECHO and USAID for providing financial support.

The data has been collected with support from the EWARS project. This is an initiative to strengthen early warning, alert and response in emergencies. It includes an online, desktop and mobile application that can be rapidly configured and deployed in the field. It is designed with frontline users in mind, and built to work in difficult and remote operating environments. This bulletin has been automatically published from the EWARS application.

More information can be found at <http://ewars-project.org>

