



## NAMIBIA COVID-19 SITUATION REPORT NO. 629

<b>Outbreak Name</b>	COVID-19 outbreak	<b>Country affected</b>	Namibia
<b>Date &amp; Time</b>	07.12.2021 20h00	<b>Investigation start Date</b>	13 March 2020
<b>Prepared by</b>	Surveillance Team		

### HIGHLIGHTS/SITUATION UPDATE (07/12/2021)

CUMULATIVE	TOTAL TODAY
Tested 807 729	Tested 2 677
Confirmed 130 676	Confirmed 446
Active 1 322	Active 1 322
Recoveries 125 767	Recoveries 158
Vaccinated 1 <sup>st</sup> doses 383 837    2 <sup>nd</sup> doses 231 798	Vaccinated 1 <sup>st</sup> doses 3 700    2 <sup>nd</sup> doses 729
Death 3 575	Death 0

- A total of **130 676** cases have been recorded to-date, representing **5%** of the total population (**2 550 226**).
- More female cases **69 520 (53%)** have been recorded.
- Of the total confirmed cases, **4 455 (3%)** are Health Workers, with **34** new confirmations today.
  - 3 714 (83%) State; 733 (16%) Private, 8 (0.2%) Non-Governmental Organizations.
  - 4 361 (99%) recoveries and 25 (0.6%) deaths.
- The recovery rate now stands at **96.2%**.
- Khomas and Erongo regions reported the highest number of cases with **42 997 (33%)** and **18 594 (14%)** respectively.
- Of the total fatalities, **3 277 (92%)** are COVID-19 deaths while **298 (8%)** are COVID-19 related deaths. The case fatality rate now stands at **2.7%**.

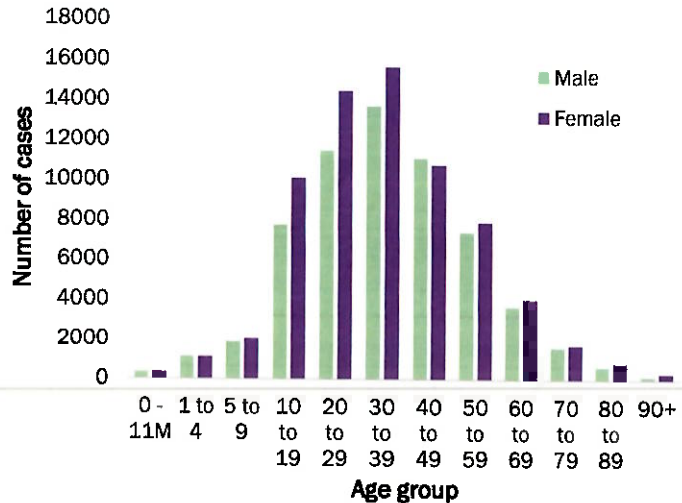
**Table 1: Distribution of confirmed COVID-19 cases by region, 07 December 2021**

Region	Total cases daily	Total No. of cases	Active cases	Recoveries	Cumulative Deaths	Cumulative deaths with co-morbidities	Non-COVID deaths	Health Workers
Erongo	15	18 594	120	18 058	411	341	5	423
Hardap	9	7 632	19	7 355	258	161	0	137
Kharas	10	7 956	59	7 745	152	130	0	243
Kavango East	2	5 533	9	5 314	209	122	1	246
Kavango West	0	645	0	626	19	16	0	42
Khomas	342	42 997	964	41 167	865	676	1	1 559
Kunene	4	3 754	10	3 620	124	89	0	99
Ohangwena	1	5 123	3	4 962	156	97	2	163
Omaheke	2	4 019	14	3 752	253	174	0	123
Omusati	2	5 816	11	5 574	231	139	0	181
Oshana	7	9 192	19	8 841	331	196	1	533
Oshikoto	0	6 773	7	6 589	175	140	2	319
Otjozondjupa	50	9 620	72	9 274	274	185	0	280
Zambezi	2	3 022	15	2 890	117	67	0	107
<b>Total</b>	<b>446</b>	<b>130 676</b>	<b>1 322</b>	<b>125 767</b>	<b>3 575</b>	<b>2 533</b>	<b>12</b>	<b>4 455</b>



## EPIDEMIOLOGICAL SITUATION IN NAMIBIA

- Of the total confirmed cases, **77 513 (59%)** are in the 20-49 years age-brackets which constitutes the majority of the recorded cases.
- A total of **21 783 (17%)** of the confirmed cases are among the 5-19 years category.
- A total of **15 351 (12%)** of the confirmed cases are among the 50 - 59 years group.
- The under 5 years age group make up **2 955 (2%)** of the total cases whereas, **13 074 (10%)** are above 60 years of age.



**Figure 1: Age and Sex distribution of COVID-19 confirmed cases 07 December 2021**

**Table 2: The current distribution for hospitalization of confirmed cases by region, 07 December 2021**

Region	Hospitalized confirmed cases	Intensive Care Unit
Erongo	6	0
Hardap	0	0
Kharas	4	0
Kavango East	0	0
Kavango West	0	0
Khomas	29	3
Kunene	1	0
Ohangwena	0	0
Omaheke	0	0
Omusati	1	0
Oshana	4	0
Oshikoto	0	0
Otjozondjupa	0	0
Zambezi	6	0
<b>Total</b>	<b>51</b>	<b>3</b>

**Table 3: COVID-19 specimen recorded at the Laboratories 07 December 2021**

VARIABLES	TOTAL
Total samples received by the Laboratory	807 846
Total samples tested	793 117
Total samples re-tested	14 612
Total positive results	130 676
Total negative results	662 432
Total samples discarded	117
Invalid results	0
Total pending results	0
Indeterminant/Inconclusive	9
Suspected cases in 24 hours (excluding re-tests)	2 635

- The laboratory testing capacity has been enhanced; with a total of sixteen (16) laboratories carrying out the testing of samples: NIP, Path-Care, UNAM Molecular, Central Veterinary Laboratory, Namib Poultry, NAMDEB, NamPath, Namibia Central Pathology, DiagnoLab, High Care, Alpha Medical Laboratory, Des-Jo Medical Test Centre, ProQuest Diagnostic Laboratory, MAXI, Medlink Laboratory Services and Biotech Medical.
- To date, **807 729** tests (including **14 612** re-tests) have been conducted by authorized laboratories.
- Since the beginning of the outbreak, **148 347** contacts of confirmed cases have been identified, **245** new contacts were identified within the last 24 hours from 11 regions.
- Cumulatively, **145 920** contacts have completed their monitoring period, while **290** contacts are lost to follow-up and a total of **25 562 (20%)** contacts of confirmed cases have tested positive.
- Today, **266 (35%)** out of **770** active contacts were monitored.

- The highest peak of **12 787 (10%)** cases was recorded during week 25 of 2021 (Figure 1).
- The country has started seeing an increase in the daily number of confirmed cases from 13 in epi-week 47 to 122 in epi-week 48.

- The National Call Center continues operations for 24 hours daily.
- Today (07/12/2021), **670** calls were answered.

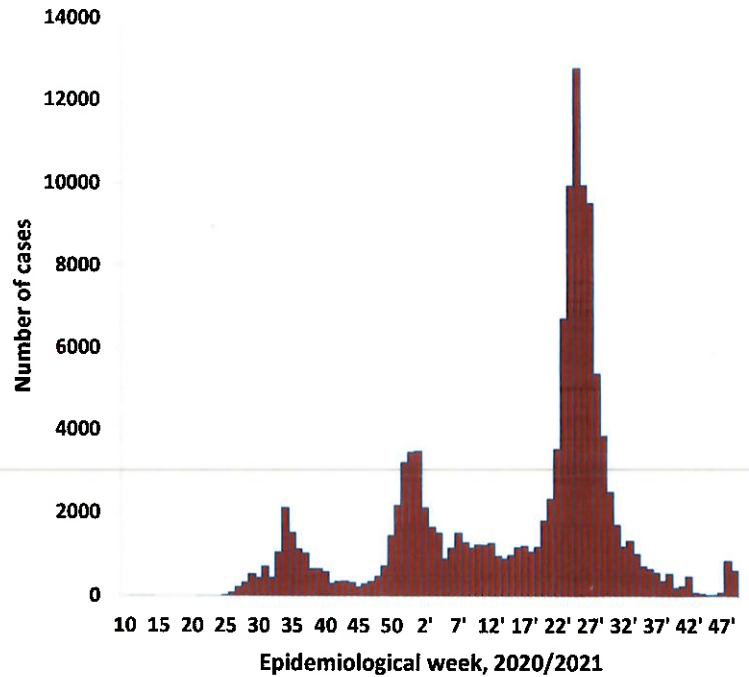


Figure 2: Epi-curve for confirmed COVID-19 cases, 07 December 2021

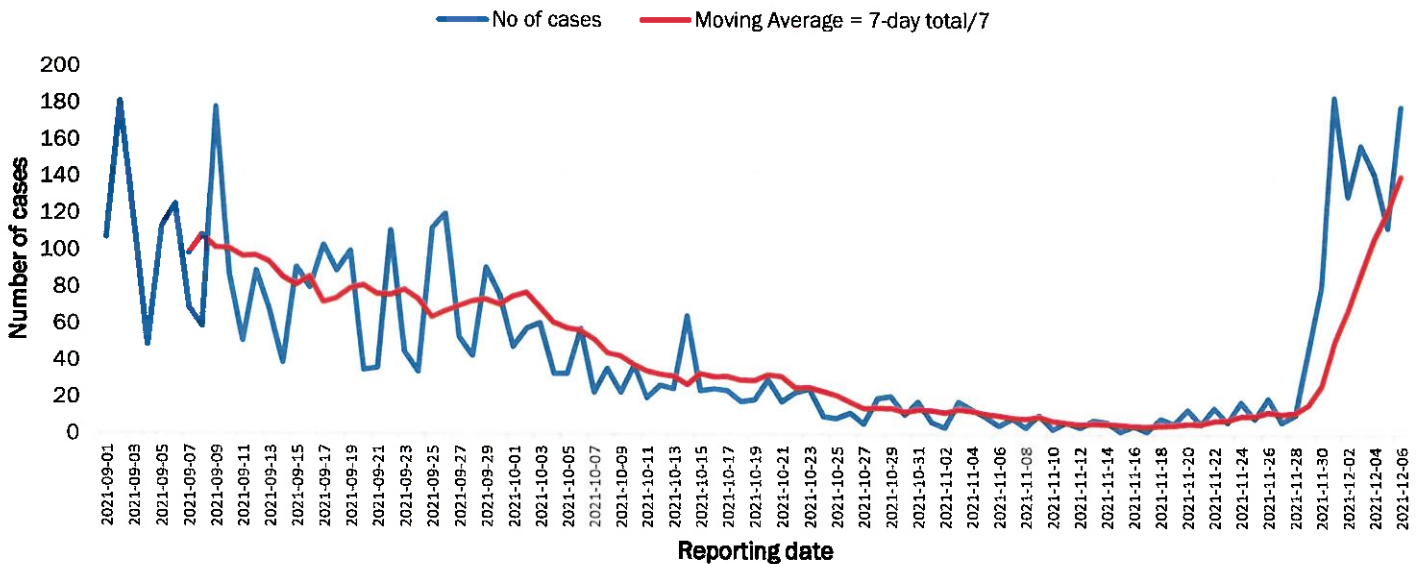


Figure 3: The 7 days moving average line chart for confirmed COVID-19 cases, 07 December 2021

Table 4: Number of people in quarantine 07 December 2021

Region	Newly quarantined 24 hours	Cumulative number	Number discharged	Number in quarantine now
Erongo	0	6 939	6 936	3
Hardap	0	3 241	3 241	0
Kavango (East and West)	0	1 673	1 673	0
Khomas	0	3 710	3 704	6
Kharas	0	10 000	9 949	51
Kunene	0	6 493	6 493	0
Ohangwena	0	880	880	0
Omaheke	54	17 790	17 695	95
Omusati	0	3 441	3 440	1
Oshana	0	400	400	0
Oshikoto	19	24 558	24 527	31
Otjozondjupa	0	1 932	1 880	52
Zambezi	0	2 032	2 032	0
<b>Total</b>	<b>73</b>	<b>83 089</b>	<b>82 850</b>	<b>239</b>

- Since March 2020, **83 083** people have been placed into quarantine around the country.
- A total of **239** people are currently in quarantine, with **73** new admissions.



**Table 5: Summary of COVID-19 vaccine doses administered, 07 December 2021**

Region	Cumulative no. of persons vaccinated with doses of Sinopharm, AstraZeneca, Sputnik V, Pfizer and Jassen & Johnson		Targeted Population	Vaccination Coverage (%)	Cumulative no. of Healthcare Workers vaccinated with doses of Sinopharm, AstraZeneca, Sputnik V, Pfizer and Jassen & Johnson	
	1 <sup>st</sup> doses	Fully vaccinated			1 <sup>st</sup> doses	Fully vaccinated
Erongo	37 553	32 857	121 682	27%	1 399	1 067
Hardap	22 920	19 446	56 741	34%	518	427
Karas	19 419	15 912	55 489	29%	791	464
Kavango East	24 991	17 892	117 665	15%	1 187	942
Kavango West	17 353	14 433	29 228	49%	417	377
Khomas	91 731	78 634	286 641	27%	3 954	2 909
Kunene	23 975	19 413	66 499	29%	647	504
Ohangwena	25 889	21 731	164 102	13%	811	635
Omaheke	17 767	13 359	51 765	26%	373	269
Omusati	24 981	21 599	139 451	15%	956	748
Oshana	20 706	18 180	126 374	14%	1 514	1 255
Oshikoto	20 518	18 096	124 395	15%	855	734
Otjozondjupa	28 843	25 059	97 903	26%	861	622
Zambezi	7 191	6 432	63 106	10%	633	589
<b>Total</b>	<b>383 837</b>	<b>323 043</b>	<b>1 501 041</b>	<b>22%</b>	<b>14 916</b>	<b>11 542</b>

**PUBLIC HEALTH ACTION (S)**

- The COVID-19 vaccination programme is ongoing throughout the country.
- Public Health measures continue to be enforced as the situation is closely monitored.
- The government and development partners continue to prioritize the continuation of essential health services.

**CHALLENGES**

- Slow vaccine uptake among members of the public, and circulation of anti-vaccination information.

**RECOMMENDATIONS**

- Encourage the public to get vaccinated and strengthen community health awareness to counteract anti-vaccination information in circulation.

**APPROVED**

  
 INCIDENT MANAGER  
 07 DECEMBER 2021

  
 SECRETARIAT

For enquiries, please contact  
**Namibia Public Health Emergency Operations Centre;**

 [PHEOC@mhss.gov.na](mailto:PHEOC@mhss.gov.na)

 0800 100 100

 0851 100 100