



NAMIBIA COVID-19 SITUATION REPORT NO. 659

Outbreak Name	COVID-19 outbreak	Country affected	Namibia
Date & Time	06.01. 2022 17h00	Investigation start Date	13 March 2020
Prepared by	Surveillance Team		

HIGHLIGHTS/SITUATION UPDATE (06/01/2022)

CUMULATIVE	CUMULATIVE
Tested 886 073	Tested 1 998
Confirmed 151 957	Confirmed 440
Active 11 330	Active 11 330
Recoveries 136 908	Recoveries 1 812
Vaccinated 1 st doses 407 430 2 nd doses 239 881 3 rd doses 7 246	Vaccinated 1 st doses 531 2 nd doses 308 3 rd doses 313
Deaths 3 705	Deaths 7

- A total of **151 957** cases have been recorded to-date, representing **6%** of the total population (**2 550 226**).
- More female cases **80 722 (53%)** have been recorded.
- Of the total confirmed cases, **5 189 (3%)** are Health Workers, with **12** new confirmations today.
 - 4 378 (84%) State; 803 (16%) Private, 8 (0.2%) Non-Governmental Organizations.
 - 5 007 (97%) recoveries and 25 (0.5%) deaths.

- The recovery rate now stands at **90%**.
- Khomas and Erongo regions reported the highest number of cases with **50 139 (33%)** and **22 064 (15%)** respectively.
- Of the total fatalities, **3 388 (91%)** are COVID-19 deaths while **317 (9%)** are COVID-19 related deaths.
- The case fatality rate now stands at **2.4%**.

Table 1: Distribution of confirmed COVID-19 cases by region, 06 January 2022

Region	Total cases daily	New reported re-infections	Total No. of cases	Active cases	Recoveries	Cumulative Deaths	Cumulative deaths with co-morbidities	Non-COVID deaths	Health Workers
Erongo	71	3	22 064	3 352	18 290	417	345	5	488
Hardap	33	0	8 226	142	7 822	262	164	0	155
Kharas	33	3	9 577	551	8 870	156	133	0	289
Kavango East	29	0	6 041	277	5 551	211	124	2	263
Kavango West	6	0	756	67	668	21	17	0	44
Khomas	92	11	50 139	3 809	45 447	882	688	1	1 792
Kunene	15	0	4 828	192	4 503	133	97	0	150
Ohangwena	18	2	5 778	348	5 257	171	100	2	213
Omaheke	1	0	4 692	496	3 937	259	179	0	140
Omusati	19	0	6 897	373	6 269	255	159	0	252
Oshana	12	0	10 276	697	9 233	345	207	1	591
Oshikoto	70	3	7 581	292	7 097	190	147	2	361
Otjozondjupa	29	0	11 742	517	10 944	280	190	1	333
Zambezi	12	0	3 360	217	3 020	123	71	0	118
Total	440	22	151 957	11 330	136 908	3705	2 621	14	5 189

EPIDEMIOLOGICAL SITUATION IN NAMIBIA

Table 2: The current distribution for hospitalization of confirmed cases by region, 06 January 2022

Region	Hospitalized confirmed cases		Vaccinated		Intensive Care Unit		Vaccinated	
	Current	Previous	1 st dose	2 nd dose	Current	Previous	1 st dose	2 nd dose
Erongo	32	32	1	6	4	5	0	0
Hardap	1	2	0	0	0	0	0	0
Kharas	14	14	0	0	0	0	0	0
Kavango East	17	17	0	2	2	2	0	0
Kavango West	4	4	0	1	0	1	0	0
Khomas	80	76	4	7	15	10	1	1
Kunene	35	34	0	10	0	10	0	0
Ohangwena	29	29	1	1	0	1	0	0
Omaheke	10	10	0	0	0	0	0	0
Omusati	35	35	0	0	0	0	0	0
Oshana	71	69	1	5	4	3	0	1
Oshikoto	30	27	1	1	13	1	0	0
Otjozondjupa	18	18	0	1	0	1	0	0
Zambezi	12	10	0	0	0	0	0	0
Total	388	377	8	34	38	34	1	2

- Of the total confirmed cases, **92 294 (61%)** are in the 20-49 years age-brackets which constitutes the majority of the recorded cases.
- A total of **23 755 (16%)** of the confirmed cases are among the 5-19 years category.
- A total of **17 588 (12%)** of the confirmed cases are among the 50 - 59 years group.
- The under 5 years age group make up **3 280 (2%)** of the total cases whereas, **15 040 (10%)** are above 60 years of age.

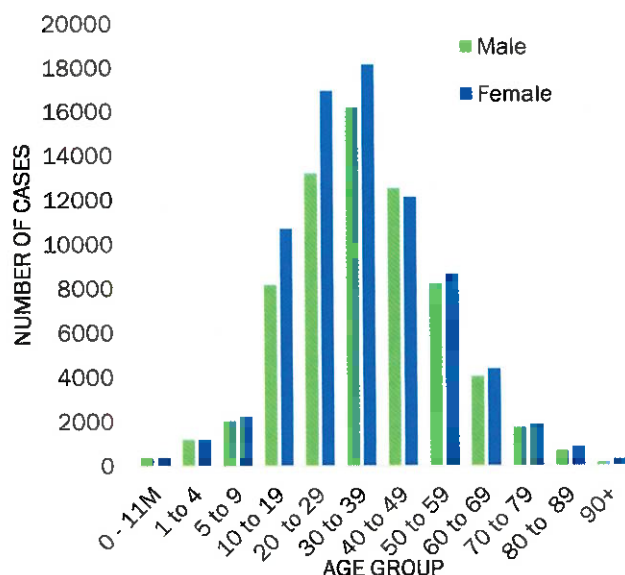


Figure 1: Age and Sex distribution of COVID-19 confirmed cases, 06 January 2022

- The laboratory testing capacity has been enhanced; with a total of twenty (20) laboratories carrying out the testing of samples: NIP, Path-Care, UNAM Molecular, Central Veterinary Laboratory, Namib Poultry, NAMDEB, NamPath, Namibia Central Pathology, DiagnoLab, High Care, Alpha Medical Laboratory, Des-Jo Medical Test Centre, ProQuest Diagnostic Laboratory, MAXI, Medlink Laboratory Services, Biotech Medical, Covisure, Star Care, Soweto Medical Center & Oshana Med Laboratory .
- To date, **886 073** tests (including **17 451** re-tests) have been conducted by authorized laboratories.
- Since the beginning of the outbreak, **160 531** contacts of confirmed cases have been identified, **216** new contacts were identified within the last 24 hours from **12** regions.
- Cumulatively, **156 286** contacts have completed their monitoring period, while **294** contacts are lost to follow-up and a total of **27 544 (18%)** contacts of confirmed cases have tested positive.
- Today, **1 146 (48%)** out of **2 391** active contacts were monitored.

Table 3: COVID-19 specimen recorded at the Laboratories 06 January 2022

VARIABLES	TOTAL
Total samples received by the Laboratory	886 211
Total samples tested	868 643
Total samples re-tested	17 451
Total positive results	151 957
Total negative results	716 642
Total samples discarded	117
Invalid results	0
Total pending results	0
Indeterminant/Inconclusive	44
Suspected cases in 24 hours (excluding re-tests)	1 941

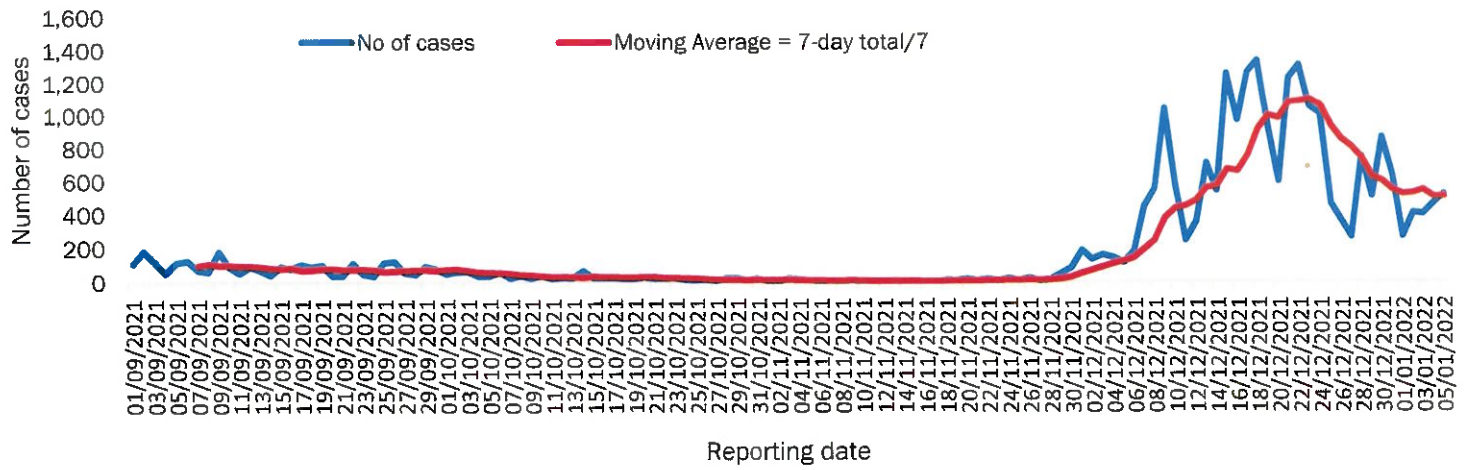


Figure 2: The 7 days moving average line chart for confirmed COVID-19 cases, 06 January 2022

- The highest peak of **12 787 (8%)** cases was recorded during week 25 of 2021 (Figure 3).
- The country has started seeing an increase in the daily number of confirmed cases from 13 in epi-week 47 to 526 in epi-week 52.
- The National Call Center continues operations for 24 hours daily.
- Today (06/01/2022), **434** calls were answered.

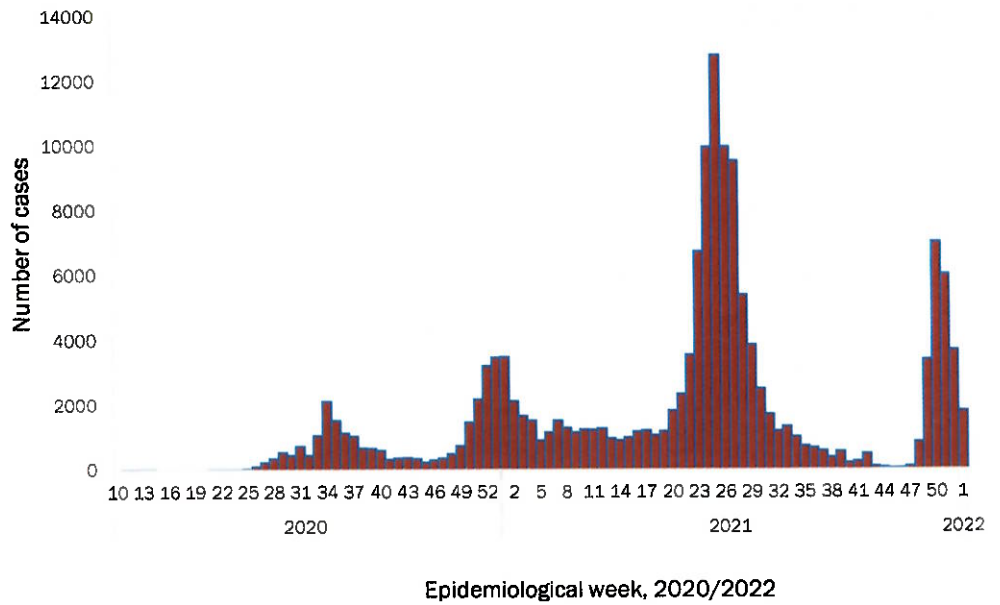


Figure 3: Epi-curve for confirmed COVID-19 cases, 06 January 2022

Table 4: Number of people in quarantine 06 January 2022

Region	Newly quarantined 24 hours	Cumulative number	Number discharged	Number in quarantine now
Erongo	0	6 949	6 947	2
Hardap	0	3 263	3 258	5
Kavango (East and West)	0	1 673	1 673	0
Khomas	0	3 734	3 730	4
Kharas	0	10 000	9 992	8
Kunene	0	6 493	6 493	0
Ohangwena	0	924	886	38
Omaheke	0	18 328	18 163	165
Omusati	0	3 775	3 613	162
Oshana	0	400	400	0
Oshikoto	80	26 158	25 942	216
Otjozondjupa	0	1 932	1 912	20
Zambezi	0	2 107	2 062	45
Total	80	85 736	85 071	665

- Since March 2020, **85 736** people have been placed into quarantine around the country.
- A total of **665** people are currently in quarantine, with **80** new admissions.

Table 5: Summary of COVID-19 vaccine doses administered, 06 January 2022

Region	Cumulative no. of persons vaccinated with doses of Sinopharm, AstraZeneca, Sputnik V, Pfizer and Jassen & Johnson		Targeted Population	Vaccination Coverage (%)	Cumulative no. of Healthcare Workers vaccinated with doses of Sinopharm, AstraZeneca, Sputnik V, Pfizer and Jassen & Johnson	
	1 st doses	Fully vaccinated			1 st doses	Fully vaccinated
Erongo	39 117	34 499	121 682	28%	1408	1 071
Hardap	25 130	21 541	56 741	38%	525	432
Kharas	20 683	17 166	55 489	31%	803	474
Kavango East	29 199	21 791	117 665	19%	1212	961
Kavango West	20 557	17 148	29 228	59%	417	377
Khomas	94 799	81 939	286 641	29%	3997	2 975
Kunene	24 582	20 111	66 499	30%	658	514
Ohangwena	27 043	22 999	164 102	14%	819	642
Omaheke	18 780	14 366	51 765	28%	374	270
Omusati	26 290	22 984	139 451	16%	977	770
Oshana	21 783	19 304	126 374	15%	1565	1 284
Oshikoto	21 535	19 179	124 395	15%	863	740
Otjozondjupa	30 425	26 705	97 903	27%	870	630
Zambezi	7 507	6 792	63 106	11%	633	590
Total	407 430	346 524	1 501 041	23%	15 121	11 730

Table 6: Summary of COVID-19 vaccine 3rd doses administered, 06 January 2022

Region	Cumulative no. of persons vaccinated		
	Sinopharm	AstraZeneca	Pfizer
Erongo	455	80	861
Hardap	235	0	373
Kharas	165	24	50
Kavango East	126	2	69
Kavango West	55	0	22
Khomas	809	355	1553
Kunene	101	17	8
Ohangwena	50	2	1
Omaheke	31	3	11
Omusati	187	23	68
Oshana	389	57	143
Oshikoto	222	32	22
Otjozondjupa	315	58	215
Zambezi	35	5	17
Total	3 175	658	3 413

PUBLIC HEALTH ACTION (S)

- The COVID-19 vaccination programme is ongoing throughout the country.
- Public Health measures continue to be enforced as the situation is closely monitored.
- The government and development partners continue to prioritize the continuation of essential health services.

CHALLENGES

- Slow vaccine uptake among members of the public, and circulation of anti-vaccination information.

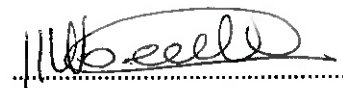
RECOMMENDATIONS

- Encourage the public to get vaccinated and strengthen community health awareness to counteract anti-vaccination information in circulation.

APPROVED



INCIDENT MANAGER
06 JANUARY 2022



SECRETARIAT

For enquiries, please contact
Namibia Public Health Emergency Operations Centre;

 PHEOC@mhss.gov.na

 0800 100 100

 0851 100 100