



NAMIBIA COVID-19 SITUATION REPORT NO. 662

Outbreak Name	COVID-19 outbreak	Country affected	Namibia
Date & Time	09.01. 2022 17h00	Investigation start Date	13 March 2020
Prepared by	Surveillance Team		

HIGHLIGHTS/SITUATION UPDATE (09/01/2022)

CUMULATIVE	CUMULATIVE
Tested 891 814	Tested 1 009
Confirmed 152 982	Confirmed 156
Active 8 913	Active 8 913
Recoveries 140 320	Recoveries 333
Vaccinated 1 <sup>st</sup> doses 408 139 2 <sup>nd</sup> doses 240 145 3 <sup>rd</sup> doses 7 609	Vaccinated 1 <sup>st</sup> doses 267 2 <sup>nd</sup> doses 0 3 <sup>rd</sup> doses 0
Deaths 3 735	Deaths 9

- A total of **152 982** cases have been recorded to-date, representing **6%** of the total population (**2 550 226**).
- More female cases **81 262 (53%)** have been recorded.
- Of the total confirmed cases, **5 211 (3%)** are Health Workers, with **1** new confirmations today.
  - 4 400 (84%) State; 803 (16%) Private, 8 (0.2%) Non-Governmental Organizations.
  - 5 007 (97%) recoveries and 25 (0.5%) deaths.

- The recovery rate now stands at **92%**.
- Khomas and Erongo regions reported the highest number of cases with **50 361 (33%)** and **22 171 (15%)** respectively.
- Of the total fatalities, **3 418 (91%)** are COVID-19 deaths while **317 (9%)** are COVID-19 related deaths.
- The case fatality rate now stands at **2.4%**.

**Table 1: Distribution of confirmed COVID-19 cases by region, 09 January 2022**

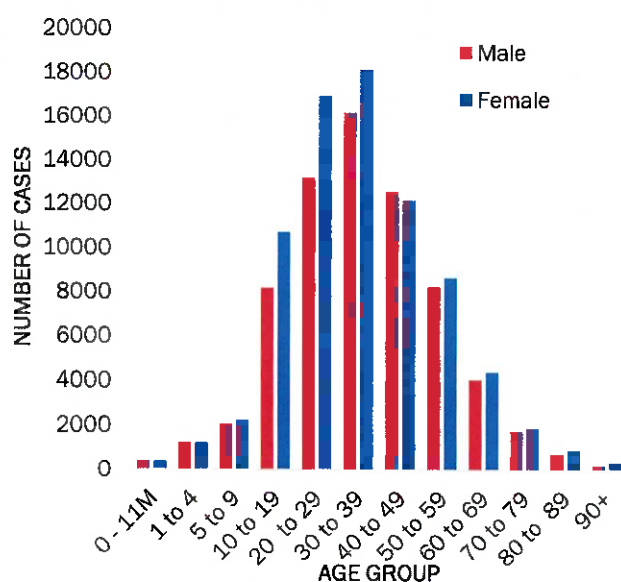
Region	Total cases daily	New reported re-infections	Total No. of cases	Active cases	Recoveries	Cumulative Deaths	Cumulative deaths with co-morbidities	Non-COVID deaths	Health Workers
Erongo	16	2	22 171	3 458	18 290	418	346	5	491
Hardap	0	0	8 247	115	7 870	262	164	0	155
Kharas	18	0	9 642	516	8 969	157	134	0	292
Kavango East	8	0	6 073	308	5 551	212	124	2	263
Kavango West	2	0	766	47	698	21	17	0	47
Khomas	27	2	50 361	1 556	47 919	885	691	1	1 795
Kunene	7	0	4 862	169	4 557	136	100	0	150
Ohangwena	0	0	5 812	360	5 274	176	105	2	213
Omaheke	2	0	4 718	522	3 937	259	179	0	140
Omusati	54	1	7 136	381	6 491	264	166	0	256
Oshana	1	1	10 344	724	9 267	352	211	1	594
Oshikoto	2	1	7 650	272	7 186	190	147	2	361
Otjozondjupa	19	1	11 818	246	11 291	280	190	1	334
Zambezi	0	0	3 382	239	3 020	123	71	0	120
<b>Total</b>	<b>156</b>	<b>8</b>	<b>152 982</b>	<b>8 913</b>	<b>140 320</b>	<b>3 735</b>	<b>2 645</b>	<b>14</b>	<b>5 211</b>

## EPIDEMIOLOGICAL SITUATION IN NAMIBIA

**Table 2: The current distribution for hospitalization of confirmed cases by region, 09 January 2022**

Region	Hospitalized confirmed cases		Vaccinated		Intensive Care Unit		Vaccinated	
	Current	Previous	1 <sup>st</sup> dose	2 <sup>nd</sup> dose	Current	Previous	1 <sup>st</sup> dose	2 <sup>nd</sup> dose
Erongo	38	32	1	7	3	4	0	0
Hardap	2	1	0	0	0	0	0	0
Kharas	14	14	1	4	0	0	0	0
Kavango East	30	25	0	2	2	3	0	0
Kavango West	3	3	0	1	0	0	0	0
Khomas	78	82	0	4	13	16	1	2
Kunene	30	35	0	10	0	0	0	0
Ohangwena	31	30	1	1	0	0	0	0
Omaheke	10	10	0	0	0	0	0	0
Omusati	33	35	0	0	0	0	0	0
Oshana	76	73	0	4	1	1	0	0
Oshikoto	34	34	1	1	10	10	0	0
Otjozondjupa	17	16	0	1	0	0	0	0
Zambezi	11	12	0	0	0	0	0	0
<b>Total</b>	<b>407</b>	<b>402</b>	<b>4</b>	<b>35</b>	<b>29</b>	<b>34</b>	<b>1</b>	<b>2</b>

- Of the total confirmed cases, **92 815 (61%)** are in the 20-49 years age-brackets which constitutes the majority of the recorded cases.
- A total of **23 877 (16%)** of the confirmed cases are among the 5-19 years category.
- A total of **17 708 (12%)** of the confirmed cases are among the 50 - 59 years group.
- The under 5 years age group make up **3 318 (2%)** of the total cases whereas, **15 269 (10%)** are above 60 years of age.

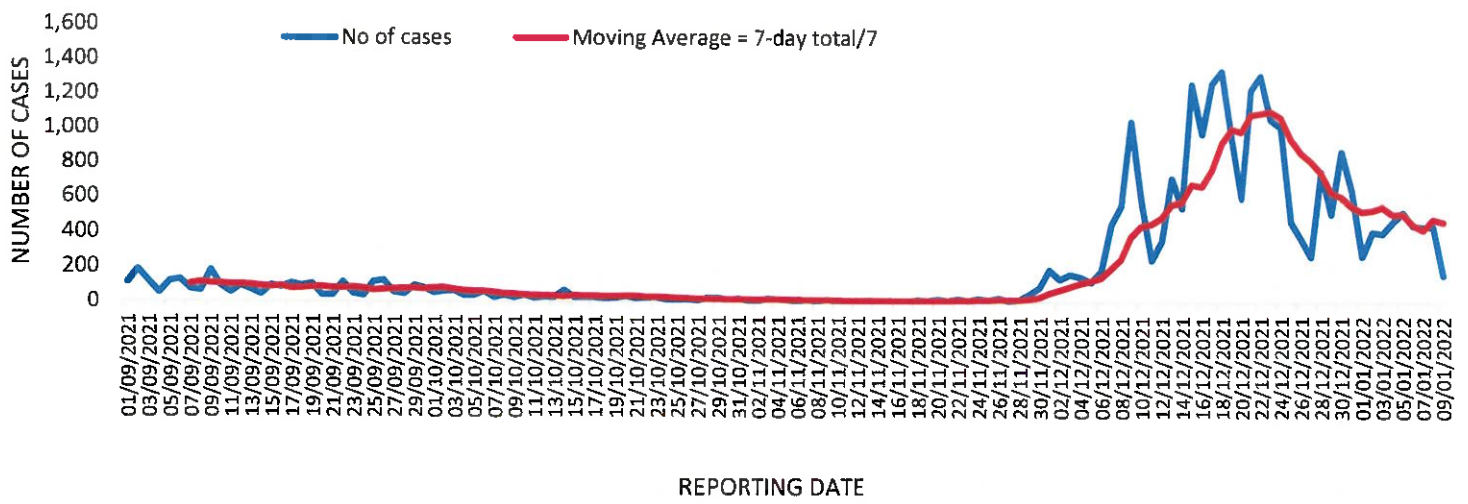


**Figure 1: Age and Sex distribution of COVID-19 confirmed cases, 09 January 2022**

- The laboratory testing capacity has been enhanced; with a total of twenty (20) laboratories carrying out the testing of samples: NIP, Path-Care, UNAM Molecular, Central Veterinary Laboratory, Namib Poultry, NAMDEB, NamPath, Namibia Central Pathology, DiagnoLab, High Care, Alpha Medical Laboratory, Des-Jo Medical Test Centre, ProQuest Diagnostic Laboratory, MAXI, Medlink Laboratory Services, Biotech Medical, Covisure, Star Care, Soweto Medical Center & Oshana Med Laboratory .
- To date, **891 814** tests (including **17 559** re-tests) have been conducted by authorized laboratories.
- Since the beginning of the outbreak, **160 923** contacts of confirmed cases have been identified, **123** new contacts were identified within the last 24 hours from 5 regions.
- Cumulatively, **156 700** contacts have completed their monitoring period, while **294** contacts are lost to follow-up and a total of **27 620 (18%)** contacts of confirmed cases have tested positive.
- Today, **968 (41%)** out of **2 370** active contacts were monitored.

**Table 3: COVID-19 specimen recorded at the Laboratories 09 January 2022**

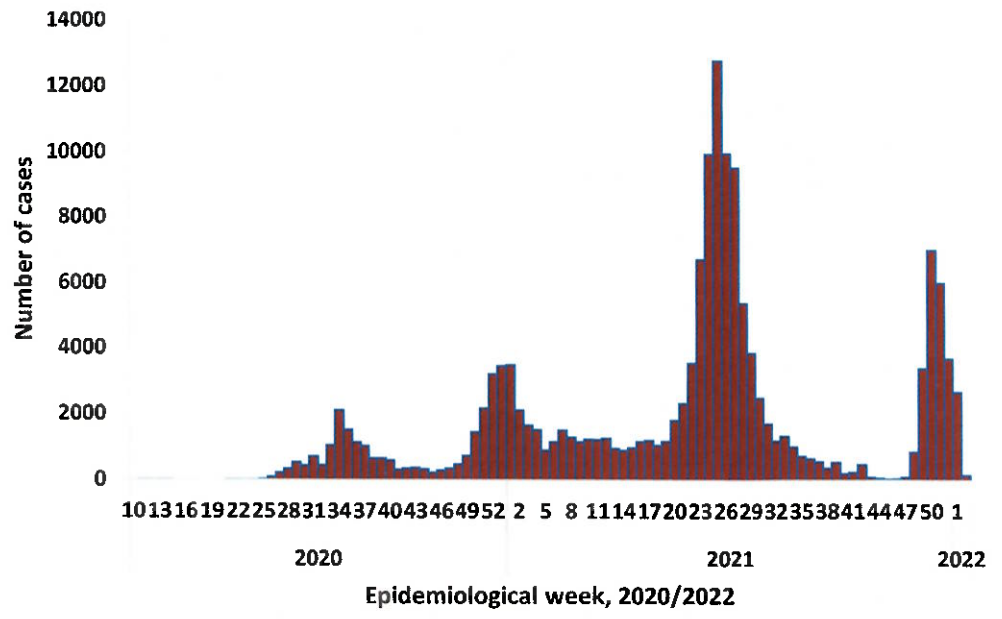
VARIABLES	TOTAL
Total samples received by the Laboratory	891 964
Total samples tested	874 288
Total samples re-tested	17 559
Total positive results	152 982
Total negative results	721 249
Total samples discarded	117
Invalid results	0
Total pending results	0
Indeterminant/Inconclusive	57
Suspected cases in 24 hours (excluding re-tests)	979



**Figure 2: The 7 days moving average line chart for confirmed COVID-19 cases, 09 January 2022**

- The highest peak of **12 787 (8%)** cases was recorded during week 25 of 2021 (Figure 3).
- The country has started seeing an increase in the daily number of confirmed cases from 13 in epi-week 47 to 383 in epi-week 1.

- The National Call Center continues operations for 24 hours daily.
- Today (09/01/2022), **430** calls were answered.



**Figure 3: Epi-curve for confirmed COVID-19 cases, 09 January 2022**

**Table 4: Number of people in quarantine 09 January 2022**

Region	Newly quarantined 24 hours	Cumulative number	Number discharged	Number in quarantine now
Erongo	0	6949	6947	2
Hardap	0	3263	3258	5
Kavango (East and West)	0	1673	1673	0
Khomas	0	3750	3730	20
Kharas	0	10000	9992	8
Kunene	0	6493	6493	0
Ohangwena	0	924	886	38
Omaheke	0	18328	18163	165
Omusati	8	3783	3613	170
Oshana	0	400	400	0
Oshikoto	0	26256	25991	265
Otjozondjupa	0	1932	1912	20
Zambezi	0	2107	2062	45
<b>Total</b>	<b>8</b>	<b>85858</b>	<b>85120</b>	<b>738</b>

- Since March 2020, **85 858** people have been placed into quarantine around the country.
- A total of **738** people are currently in quarantine, with **8** new admissions.

**Table 5: Summary of COVID-19 vaccine doses administered, 09 January 2022**

Region	Cumulative no. of persons vaccinated with doses of Sinopharm, AstraZeneca, Sputnik V, Pfizer and Jassen & Johnson		Targeted Population	Vaccination Coverage (%)	Cumulative no. of Healthcare Workers vaccinated with doses of Sinopharm, AstraZeneca, Sputnik V, Pfizer and Jassen & Johnson	
	1 <sup>st</sup> doses	Fully vaccinated			1 <sup>st</sup> doses	Fully vaccinated
Erongo	39 166	34 499	121 682	28%	1408	1 071
Hardap	25 199	21 613	56 741	38%	525	432
Kharas	20 741	17 218	55 489	31%	803	474
Kavango East	29 283	21 791	117 665	19%	1212	961
Kavango West	20 557	17 148	29 228	59%	417	377
Khomas	95 009	82 154	286 641	29%	3998	2 978
Kunene	24 582	20 111	66 499	30%	658	514
Ohangwena	27 137	22 999	164 102	14%	819	642
Omaheke	18 782	14 391	51 765	28%	374	270
Omusati	26 306	22 984	139 451	16%	977	770
Oshana	21 824	19 339	126 374	15%	1565	1 284
Oshikoto	21 561	19 202	124 395	15%	863	740
Otjozondjupa	30 484	26 762	97 903	27%	870	630
Zambezi	7 508	6 793	63 106	11%	633	590
<b>Total</b>	<b>408 139</b>	<b>347 004</b>	<b>1 501 041</b>	<b>23%</b>	<b>15 122</b>	<b>11 733</b>

**Table 6: Summary of COVID-19 vaccine 3<sup>rd</sup> doses administered, 09 January 2022**

Region	Cumulative no. of persons vaccinated		
	Sinopharm	AstraZeneca	Pfizer
Erongo	455	80	861
Hardap	253	0	394
Kharas	168	24	55
Kavango East	126	2	69
Kavango West	55	0	22
Khomas	881	355	1 720
Kunene	101	17	8
Ohangwena	50	2	1
Omaheke	31	3	11
Omusati	187	23	68
Oshana	412	57	154
Oshikoto	225	32	26
Otjozondjupa	330	58	233
Zambezi	38	5	17
<b>Total</b>	<b>3 312</b>	<b>658</b>	<b>3 639</b>

**PUBLIC HEALTH ACTION (S)**

- The COVID-19 vaccination programme is ongoing throughout the country.
- Public Health measures continue to be enforced as the situation is closely monitored.
- The government and development partners continue to prioritize the continuation of essential health services.

**CHALLENGES**

- Slow vaccine uptake among members of the public, and circulation of anti-vaccination information.

**RECOMMENDATIONS**

- Encourage the public to get vaccinated and strengthen community health awareness to counteract anti-vaccination information in circulation.

APPROVED




INCIDENT MANAGER  
09 JANUARY 2022



SECRETARIAT

For enquiries, please contact  
**Namibia Public Health Emergency Operations Centre;**

 [PHEOC@mhss.gov.na](mailto:PHEOC@mhss.gov.na)

 0800 100 100

 0851 100 100