



NAMIBIA COVID-19 SITUATION REPORT NO. 728

Outbreak Name	COVID-19 outbreak	Country affected	Namibia
Date & Time	17.03 2022 17h00	Investigation start Date	13 March 2020
Prepared by	Surveillance Team		

HIGHLIGHTS/SITUATION UPDATE (17/03/2022)

CUMULATIVE

Tested 973 306

Confirmed 157 503

Active 176

Recovered 155 392

Vaccinated

1st doses 449 609 2nd doses 254 264 3rd doses 34 634

Deaths 4 014

TOTAL TODAY

Tested 1 313

Confirmed 14

Active 176

Recovered 40

Vaccinated

1st doses 591 2nd doses 297 3rd doses 566

Deaths 0

- A total of **157 503** cases have been recorded to-date, representing **6%** of the total population (**2 550 226**).
- More female cases **83 551 (53%)** have been recorded.
- Of the total confirmed cases, **5 323 (3%)** are Health Workers, with no new confirmation today.
 - **4 507 (85%)** State; **807 (15%)** Private, **8 (0.2%)** Non-Governmental Organizations.
 - **5 318 (100%)** recoveries and **25 (0.5%)** deaths.
- The recovery rate now stands at **99%**.
- Khomas and Erongo regions reported the highest number of cases with **51 069 (32%)** and **22 681 (14%)** respectively.
- Of the total fatalities **3 685 (92%)** are COVID-19 deaths while **329 (8%)** are COVID-19 related deaths.
- The case fatality rate now stands at **2.5%**.

Table 1: Distribution of confirmed COVID-19 cases by region, 17 March 2022

Region	New cases	New re-infections	Cummulative re-infections	Cummulative New cases	Active cases	Recoveries	Cumulative Deaths	Cumulative deaths with co-morbidities	Non-COVID deaths	Health Workers
Erongo	2	0	360	22 681	23	22 587	426	353	5	493
Hardap	1	0	67	8 389	2	8 189	265	168	0	160
Kharas	0	0	187	9 944	7	9 964	160	137	0	295
Kavango East	0	0	50	6 356	6	6 170	228	132	2	286
Kavango West	0	0	4	842	0	823	23	21	0	48
Khomas	2	0	893	51 069	60	51 000	901	705	1	1 816
Kunene	0	0	53	4 998	5	4 893	153	108	0	151
Ohangwena	0	0	42	6 049	5	5 880	204	124	2	221
Omaheke	0	0	60	5 188	2	4 955	290	204	1	143
Omusati	0	0	42	7 588	2	7 285	343	211	0	266
Oshana	1	0	92	10 630	20	10 307	394	243	1	607
Oshikoto	2	1	58	7 969	9	7 807	208	159	2	366
Otjozondjupa	4	1	163	12 230	27	12 081	284	194	1	343
Zambezi	2	0	23	3 570	8	3 451	135	77	0	128
Total	14	2	2094	157 503	176	155 392	4 014	2 836	15	5 323

EPIDEMIOLOGICAL SITUATION IN NAMIBA

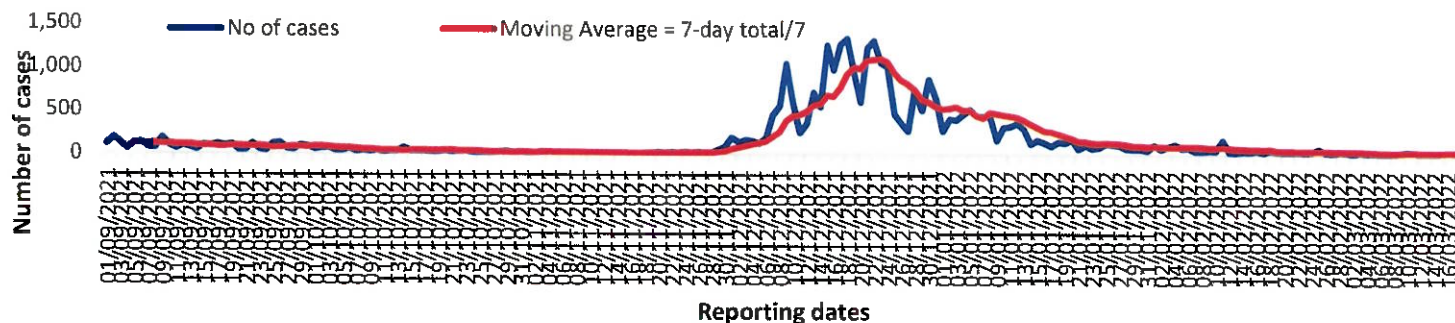
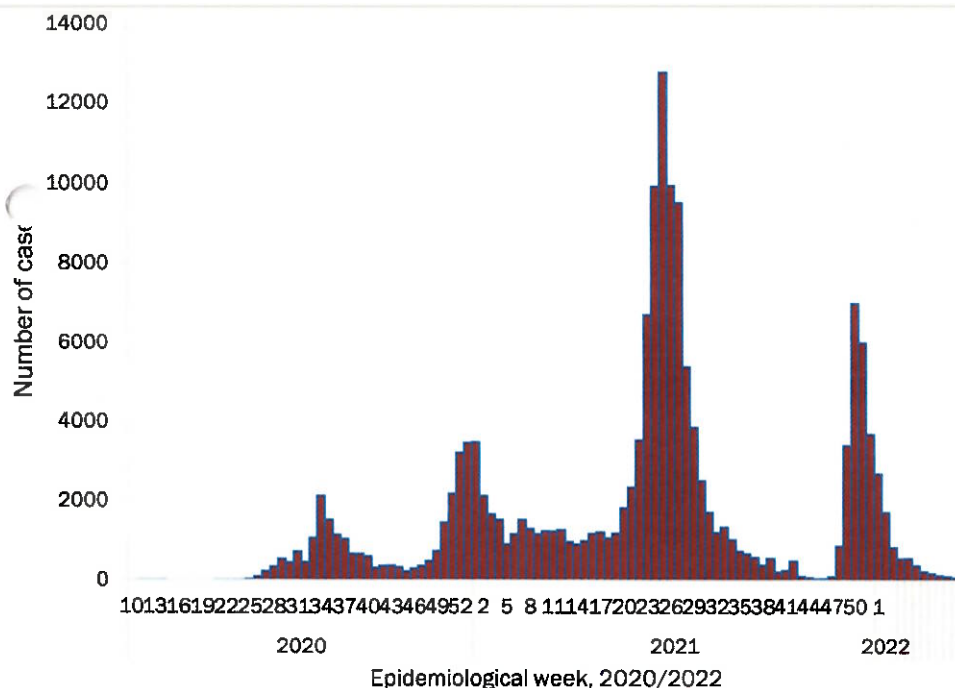


Figure 2: The 7 days moving average line chart for confirmed COVID-19 cases, 17 March 2022



- The highest peak of **12 787 (8%)** cases was recorded during week 25 of 2021 (Figure 3).
- The country has started seeing a gradual reduction in the average number of confirmed cases from 1424 to 29 from epi-week 26 to 40 of 2021.
- Another peak of **7005** cases was recorded in week 50 of 2021
- The number of cases have decreased in the last seven weeks as seen in the graph.

- The National Call Center continues operations for 24 hours daily.
- Today (17/03/2022), **233** calls were answered.

Figure 3: Epi-curve for confirmed COVID-19 cases, 17 March 2022

Table 4: Number of people in quarantine 17 March 2022

Region	Newly quarantined 24 hours	Cumulative number	Number discharged	Number in quarantine now
Erongo	6	7 321	7 295	26
Hardap	0	3 263	3 263	0
Kavango (East and West)	0	1 686	1 673	13
Khomas	0	3 767	3 767	0
Kharas	0	10 000	10 000	0
Kunene	0	6 493	6 493	0
Ohangwena	0	924	924	0
Omaheke	20	19 958	19 918	40
Omusati	0	3 999	3 990	9
Oshana	0	400	400	0
Oshikoto	11	27 835	27 787	48
Otjozondjupa	0	1 932	1 932	0
Zambezi	0	2 184	2 148	36
Total	37	89 762	89 590	172

- Since March 2020, **89 762** people have been placed into quarantine around the country.
- A total of **172** people are currently in quarantine, with no new admissions.

**Table 3: COVID-19 specimen recorded at the Laboratories
17 March 2022**

VARIABLES	TOTAL
Total samples received by the Laboratory	973 301
Total samples tested	954 960
Total samples re-tested	18 224
Total positive results	157 503
Total negative results	797 382
Total samples discarded	117
Invalid results	0
Total pending results	0
Indeterminant/Inconclusive	75
Suspected cases in 24 hours (excluding re-tests)	1 310

➤ The laboratory testing capacity has been enhanced; with a total of twenty-three (23) laboratories carrying out the testing of samples: NIP, Path-Care, UNAM Molecular, Central Veterinary Laboratory, Namib Poultry, NAMDEB, NamPath, Namibia Central Pathology, DiagnoLab, High Care, Alpha Medical Laboratory, Des-Jo Medical Test Centre, ProQuest Diagnostic Laboratory, MAXI, Medlink Laboratory Services, Biotech Medical, Covisure, Star Care, Soweto Medical Center, Hosea Kutako International Airport & Oshana Med Laboratory .

➤ To date, **973 306** tests (including **18 224** re-tests) have been conducted by authorized laboratories.

➤ Since the beginning of the outbreak, **168 695** contacts of confirmed cases have been identified, **14** new contacts were identified within the last 24 hours from **11** regions.

➤ Cumulatively, **166 982** contacts have completed their monitoring period, while **299** contacts are lost to follow-up and a total of **28 578 (18%)** contacts of confirmed cases have tested positive.

➤ Today, **133 (83%)** out of **160** active contacts were monitored.

- Of the total confirmed cases, **94 833 (60%)** are in the 20-49 years age-brackets which constitutes the majority of the recorded cases.
- A total of **24 925 (16%)** of the confirmed cases are among the 5-19 years category.
- A total of **18 150 (12%)** of the confirmed cases are among the 50 - 59 years group.
- The under 5 years age group make up **3 487 (2%)** of the total cases whereas, **16 108 (10%)** are above 60 years of age.

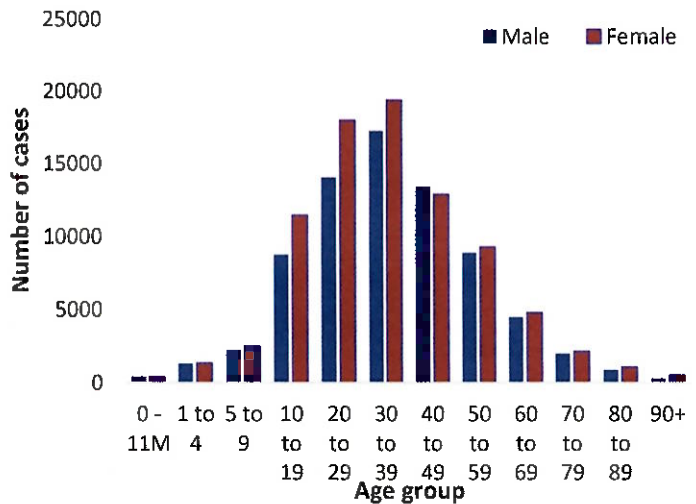


Figure 1: Age and Sex distribution of COVID-19 confirmed cases, 17 March 2022

Table 2: The current distribution for hospitalization of confirmed cases by region, 17 March 2022

Region	Hospitalized confirmed cases		Vaccinated		Intensive Care Unit		Vaccinated	
	Current	Previous	1 st dose	2 nd dose	Current	Previous	1 st dose	2 nd dose
Erongo	2	2	0	0	0	0	0	0
Hardap	1	1	0	1	0	0	0	0
Kharas	1	1	0	0	0	0	0	0
Kavango East	1	1	0	0	0	0	0	0
Kavango West	0	0	0	0	0	0	0	0
Khomas	5	5	0	1	3	3	0	0
Kunene	0	0	0	0	0	0	0	0
Ohangwena	0	0	0	0	0	0	0	0
Omaheke	0	0	0	0	0	0	0	0
Omusati	0	0	0	0	0	0	0	0
Oshana	2	2	0	0	0	0	0	0
Oshikoto	3	4	0	0	0	0	0	0
Otjozondjupa	0	0	0	0	0	0	0	0
Zambezi	0	0	0	0	0	0	0	0
Total	15	16	0	2	3	3	0	0

Table 6: Summary of COVID-19 vaccine 3rd doses administered, 17 March 2022

Region	Cumulative no. of persons vaccinated			
	Sinopharm	AstraZeneca	Pfizer	Booster Doses J&J
Erongo	1634	601	2846	346
Hardap	1983	370	942	121
Kharas	793	161	324	64
Kavango East	519	193	243	434
Kavango West	518	247	240	272
Khomas	2506	868	5173	576
Kunene	1482	376	579	454
Ohangwena	283	82	22	59
Omaheke	369	150	130	33
Omusati	859	308	435	64
Oshana	1163	196	580	172
Oshikoto	791	159	203	36
Otjozondjupa	1640	449	897	6
Zambezi	417	38	105	123
Total	14957	4198	12719	2760

Table 5: Summary of COVID-19 vaccine doses administered, 17 March 2022

Region	Cumulative no. of persons vaccinated with doses of Sinopharm, AstraZeneca, Sputnik V, Pfizer and Jassen & Johnson		Targeted Population	Vaccination Coverage (%)	Cumulative no. of Healthcare Workers vaccinated with doses of Sinopharm, AstraZeneca, Sputnik V, Pfizer and Jassen & Johnson	
	1 st doses	Fully vaccinated			1 st doses	Fully vaccinated
Erongo	41 804	37 174	161 966	23%	1 432	1 095
Hardap	27 478	23 845	69 121	34%	541	447
Kharas	22 854	19 321	69 786	28%	815	490
Kavango East	37 950	27 397	105 223	26%	1 264	1 011
Kavango West	28 060	20 956	57 210	37%	434	388
Khomas	100 673	88 392	362 620	24%	4 065	3 055
Kunene	26 825	22 089	72 991	30%	678	526
Ohangwena	28 329	24 410	174 546	14%	855	684
Omaheke	19 734	15 380	53 002	29%	379	272
Omusati	27 664	24 437	179 370	14%	1 000	790
Oshana	23 496	20 953	143 395	15%	1 612	1 331
Oshikoto	22 754	20 529	144 912	14%	881	770
Otjozondjupa	33 642	29 975	112 119	27%	911	666
Zambezi	8 346	7 670	73 010	11%	662	614
Total	449 609	382 528	1 779 271	21%	15 529	12 139

PUBLIC HEALTH ACTION (S)

- The COVID-19 vaccination programme is ongoing throughout the country.
- Public Health measures continue to be enforced as the situation is closely monitored.
- The government and development partners continue to prioritize the continuation of essential health services.


CHALLENGES

Slow vaccine uptake among members of the public, and circulation of anti-vaccination information.

RECOMMENDATIONS

Encourage the public to get vaccinated and strengthen community health awareness to counteract anti-vaccination information in circulation.

APPROVED


.....

INCIDENT MANAGER
17 MARCH 2022


.....

SECRETARIAT

For enquiries, please contact

Namibia Public Health Emergency Operations Centre;

 PHEOC@mhss.gov.na

 0800 100 100

 0851 100 100