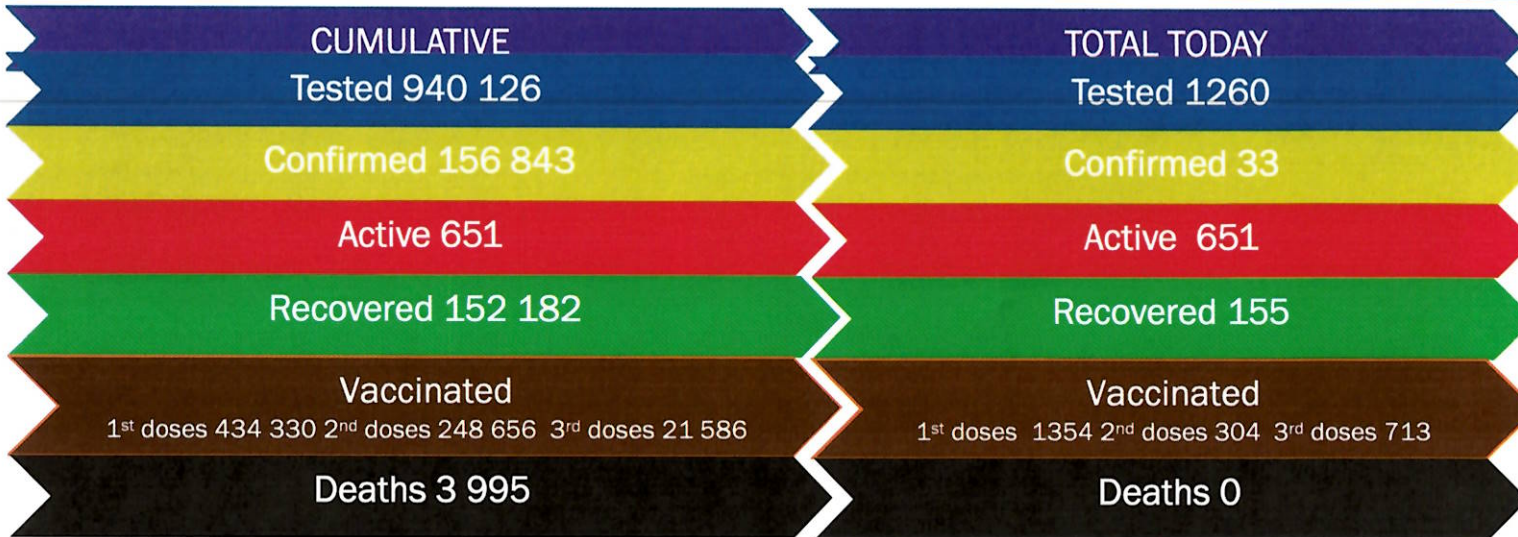




NAMIBIA COVID-19 SITUATION REPORT NO. 697

Outbreak Name	COVID-19 outbreak	Country affected	Namibia
Date & Time	14.02. 2022 17h00	Investigation start Date	13 March 2020
Prepared by	Surveillance Team		

HIGHLIGHTS/SITUATION UPDATE (14/02/2022)



- A total of **156 843** cases have been recorded to-date, representing **6%** of the total population (**2 550 226**).
- More female cases **83 196 (53%)** have been recorded.
- Of the total confirmed cases, **5 316 (3%)** are Health Workers, with **0** new confirmation today.
 - 4 502 (85%) State; 806 (15%) Private, 8 (0.2%) Non-Governmental Organizations.
 - 5 287 (99%) recoveries and 25 (0.5%) deaths.
- The recovery rate now stands at **97%**.
- Khomas and Erongo regions reported the highest number of cases with **50 937 (32%)** and **22 575 (14%)** respectively.
- Of the total fatalities, **3 667 (92%)** are COVID-19 deaths while **328 (8%)** are COVID-19 related deaths.
- The case fatality rate now stands at **2.5%**.

Table 1: Distribution of confirmed COVID-19 cases by region, 14 February 2022

Region	Total cases daily	New reported re-infections	Total No. of cases	Active cases	Recoveries	Cumulative Deaths	Cumulative deaths with co-morbidities	Non-COVID deaths	Health Workers
Erongo	10	2	22 575	129	22 015	426	353	5	491
Hardap	1	0	8 382	7	8 110	265	168	0	160
! Kharas	2	1	9 927	17	9 750	160	137	0	295
Kavango East	0	0	6 342	105	6 009	226	131	2	285
Kavango West	0	0	842	2	817	23	21	0	48
Khomas	12	0	50 937	146	49 889	901	705	1	1 815
Kunene	0	0	4 985	5	4 829	151	107	0	151
Ohangwena	0	0	5 997	44	5 754	197	120	2	221
Omaheke	2	0	5 119	36	4 793	289	204	1	143
Omusati	1	0	7 557	34	7 183	340	209	0	265
Oshana	0	0	10 600	39	10 167	393	242	1	607
Oshikoto	0	0	7 888	37	7 642	207	159	2	365
Otjozondjupa	0	0	12 146	28	11 833	284	194	1	342
Zambezi	5	0	3 546	22	3 391	133	77	0	128
Total	33	3	156 843	651	152 182	3 995	2 826	15	5 316

EPIDEMIOLOGICAL SITUATION IN NAMIBA

Table 2: The current distribution for hospitalization of confirmed cases by region, 14 February 2022

Region	Hospitalized confirmed cases		Vaccinated		Intensive Care Unit		Vaccinated	
	Current	Previous	1 st dose	2 nd dose	Current	Previous	1 st dose	2 nd dose
Erongo	8	8	0	3	4	0	0	0
Hardap	2	2	0	0	0	0	0	0
Karas	0	0	0	0	0	0	0	0
Kavango East	2	5	0	0	0	0	0	0
Kavango West	1	1	0	0	0	0	0	0
Khomas	11	11	0	2	0	4	0	1
Kunene	0	0	0	0	0	0	0	0
Ohangwena	6	6	1	0	0	0	0	0
Omaheke	2	2	0	0	0	0	0	0
Omusati	8	9	0	0	0	0	0	0
Oshana	5	4	0	0	0	0	0	0
Oshikoto	6	6	0	0	1	1	0	0
Otjozondjupa	1	1	0	0	0	0	0	0
Zambezi	9	9	0	0	0	0	0	0
Total	61	64	1	5	5	5	0	1

- Of the total confirmed cases, **94 562 (60%)** are in the 20-49 years age-brackets which constitutes the majority of the recorded cases.
- A total of **24 720 (16%)** of the confirmed cases are among the 5-19 years category.
- A total of **18 081 (12%)** of the confirmed cases are among the 50 - 59 years group.
- The under 5 years age group make up **3 443 (2%)** of the total cases whereas, **16 019 (10%)** are above 60 years of age.

- The laboratory testing capacity has been enhanced; with a total of twenty-three (23) laboratories carrying out the testing of samples: NIP, Path-Care, UNAM Molecular, Central Veterinary Laboratory, Namib Poultry, NAMDEB, NamPath, Namibia Central Pathology, DiagnoLab, High Care, Alpha Medical Laboratory, Des-Jo Medical Test Centre, ProQuest Diagnostic Laboratory, MAXI, Medlink Laboratory Services, Biotech Medical, Covisure, Star Care, Soweto Medical Center, Hosea Kutako International Airport & Oshana Med Laboratory .
- To date, **940 126** tests (including **18 136** re-tests) have been conducted by authorized laboratories.
- Since the beginning of the outbreak, **167 018** contacts of confirmed cases have been identified, **163** new contacts were identified within the last 24 hours from **12** regions.
- Cumulatively, **164 606** contacts have completed their monitoring period, while **299** contacts are lost to follow-up and a total of **28 510 (17%)** contacts of confirmed cases have tested positive.
- Today, **487 (72%)** out of **673** active contacts were monitored.

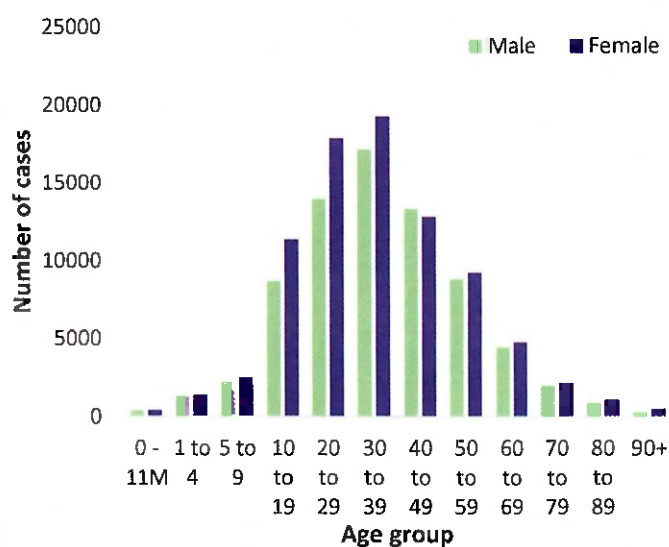


Figure 1: Age and Sex distribution of COVID-19 confirmed cases, 14 February 2022

Table 3: COVID-19 specimen recorded at the Laboratories 14 February 2022

VARIABLES	TOTAL
Total samples received by the Laboratory	94 0250
Total samples tested	921 999
Total samples re-tested	18 136
Total positive results	156 843
Total negative results	765 106
Total samples discarded	117
Invalid results	0
Total pending results	0
Indeterminant/Inconclusive	50
Suspected cases in 24 hours (excluding re-tests)	1 255

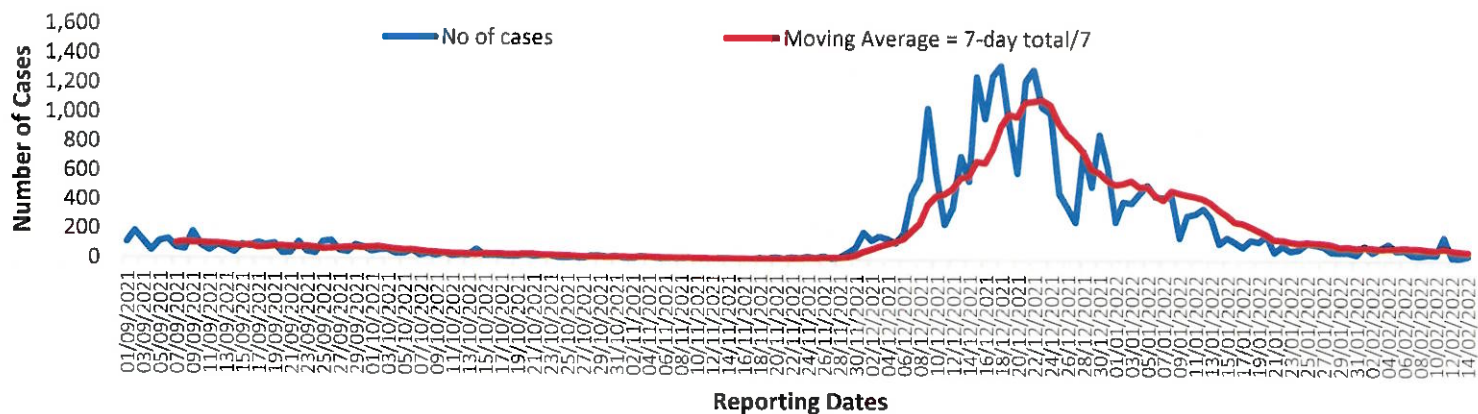


Figure 2: The 7 days moving average line chart for confirmed COVID-19 cases, 14 February 2022

- The highest peak of **12 787 (8%)** cases was recorded during week 25 of 2021 (Figure 3).
- The country has started seeing a gradual reduction in the average number of confirmed cases from 383 to 77 in epi-week 5.
- The number of cases have decreased in the last four weeks as seen in the graph.

- The National Call Center continues operations for 24 hours daily.
- Today (14/02/2022), **166** calls were answered.

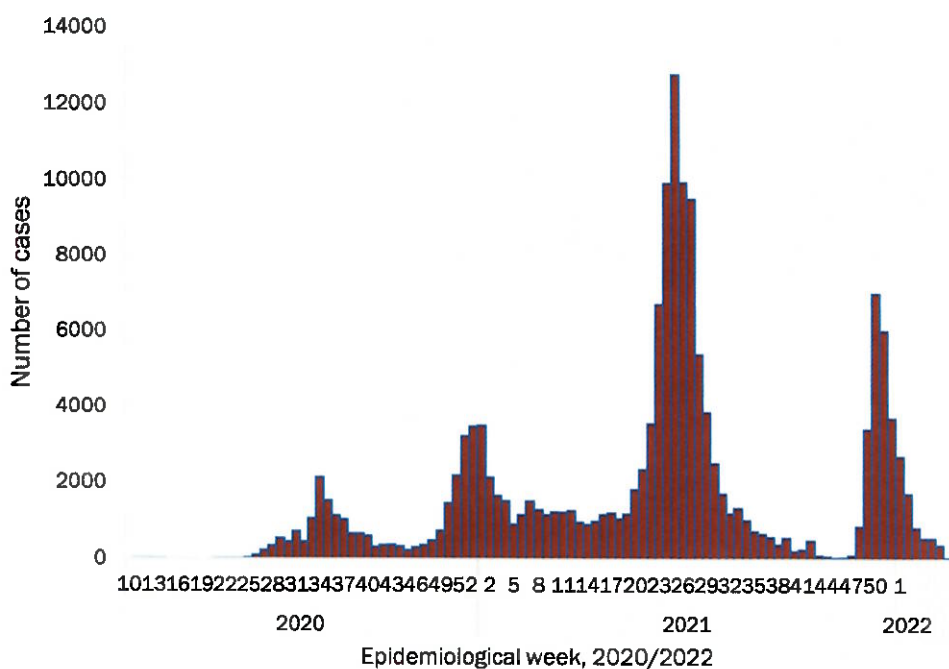


Figure 3: Epi-curve for confirmed COVID-19 cases, 14 February 2022

Table 4: Number of people in quarantine 14 February 2022

Region	Newly quarantined 24 hours	Cumulative number	Number discharged	Number in quarantine now
Erongo	20	6 993	6 949	44
Hardap	0	3 263	3 263	0
Kavango (East and West)	0	1 673	1 673	0
Khomas	0	3 763	3 754	9
Kharas	0	10 000	10 000	0
Kunene	0	6 493	6 493	0
Ohangwena	0	924	924	0
Omaheke	0	18 928	18 646	282
Omusati	0	3 947	3 936	11
Oshana	0	400	400	0
Oshikoto	33	27 239	27 175	64
Otjozondjupa	0	1 932	1 927	5
Zambezi	0	2 107	2 107	0
Total	53	87 662	87 247	415

- Since March 2020, **87 662** people have been placed into quarantine around the country.
- A total of **415** people are currently in quarantine, with **53** new admissions.

Table 5: Summary of COVID-19 vaccine doses administered, 14 February 2022

Region	Cumulative no. of persons vaccinated with doses of Sinopharm, AstraZeneca, Sputnik V, Pfizer and Jassen & Johnson		Targeted Population	Vaccination Coverage (%)	Cumulative no. of Healthcare Workers vaccinated with doses of Sinopharm, AstraZeneca, Sputnik V, Pfizer and Jassen & Johnson	
	1 st doses	Fully vaccinated			1 st doses	Fully vaccinated
Erongo	40 953	36 268	161 966	22%	1 415	1 077
Hardap	26 777	23 117	69 121	33%	525	432
Kharas	21 938	18 346	69 786	26%	803	474
Kavango East	34 816	25 117	105 223	24%	1 253	998
Kavango West	25 081	18 978	57 210	33%	429	383
Khomas	98 731	86 234	362 620	24%	4 037	3 022
Kunene	26 176	21 474	72 991	29%	658	514
Ohangwena	27 788	23 689	174 546	14%	846	672
Omaheke	19 393	14 957	53 002	28%	374	270
Omusati	27 102	23 841	179 370	13%	998	788
Oshana	22 708	20 199	143 395	14%	1 593	1 310
Oshikoto	22 437	20 170	144 912	14%	863	740
Otjozondjupa	32 775	29 091	112 119	26%	896	651
Zambezi	7 655	6 953	73 010	10%	639	594
Total	434 330	368 434	1 779 271	21%	15 329	11 925

Table 6: Summary of COVID-19 vaccine 3rd doses administered, 14 February 2022

Region	Cumulative no. of persons vaccinated		
	Sinopharm	AstraZeneca	Pfizer
Erongo	1 148	313	2 251
Hardap	1 004	183	768
Kharas	413	78	188
Kavango East	345	91	200
Kavango West	182	89	139
Khomas	1 898	586	4 184
Kunene	1 079	269	425
Ohangwena	146	18	5
Omaheke	145	60	45
Omusati	537	132	290
Oshana	790	96	432
Oshikoto	542	90	165
Otjozondjupa	1 058	309	680
Zambezi	130	20	63
Total	9 417	2 334	9 835

PUBLIC HEALTH ACTION (S)

- The COVID-19 vaccination programme is ongoing throughout the country.
- Public Health measures continue to be enforced as the situation is closely monitored.
- The government and development partners continue to prioritize the continuation of essential health services.


CHALLENGES

- Slow vaccine uptake among members of the public, and circulation of anti-vaccination information.

RECOMMENDATIONS


- Encourage the public to get vaccinated and strengthen community health awareness to counteract anti-vaccination information in circulation.


APPROVED



 INCIDENT MANAGER
 14 FEBRUARY 2022


 SECRETARIAT

For enquiries, please contact
Namibia Public Health Emergency Operations Centre;

 PHEOC@mhss.gov.na

 0800 100 100

 0851 100 100