



NAMIBIA COVID-19 SITUATION REPORT NO. 726

Outbreak Name	COVID-19 outbreak	Country affected	Namibia
Date & Time	15.03 2022 17h00	Investigation start Date	13 March 2020
Prepared by	Surveillance Team		

HIGHLIGHTS/SITUATION UPDATE (15/03/2022)

CUMULATIVE

Tested 970 775

Confirmed 157 471

Active 195

Recovered 155 399

Vaccinated

1st doses 448 680 2nd doses 253 877 3rd doses 33 699

Deaths 4 014

TOTAL TODAY

Tested 942

Confirmed 13

Active 195

Recovered 46

Vaccinated

1st doses 495 2nd doses 153 3rd doses 421

Deaths 0

- A total of **157 471** cases have been recorded to-date, representing **6%** of the total population (**2 550 226**).
- More female cases **83 536 (53%)** have been recorded.
- Of the total confirmed cases, **5 323 (3%)** are Health Workers, with 1 new confirmation today.
 - 4 507 (85%) State; 807 (15%) Private, 8 (0.2%) Non-Governmental Organizations.
 - 5 318 (100%) recoveries and 25 (0.5%) deaths.
- The recovery rate now stands at **99%**.
- Khomas and Erongo regions reported the highest number of cases with **51 061 (32%)** and **22 677 (14%)** respectively.
- Of the total fatalities **3 685 (92%)** are COVID-19 deaths while **329 (8%)** are COVID-19 related deaths.
- The case fatality rate now stands at **2.5%**.

Table 1: Distribution of confirmed COVID-19 cases by region, 15 March 2022

Region	New cases	New re-infections	Cummulative re-infections	Cummulative New cases	Active cases	Recoveries	Cumulative Deaths	Cumulative deaths with co-morbidities	Non-COVID deaths	Health Workers
Erongo	3	1	360	22 677	43	22 563	426	353	5	493
Hardap	0	0	67	8 385	1	8 186	265	168	0	160
ǀKharas	0	0	187	9 944	7	9 964	160	137	0	295
Kavango East	0	0	50	6 355	5	6 170	228	132	2	286
Kavango West	0	0	4	842	0	823	23	21	0	48
Khomas	4	2	893	51 061	55	50 997	901	705	1	1 816
Kunene	0	0	53	4 998	5	4 893	153	108	0	151
Oshana	1	0	42	6 049	17	5 868	204	124	2	221
Omaheke	0	0	60	5 187	2	4 954	290	204	1	143
Omusati	1	0	42	7 588	2	7 285	343	211	0	266
Oshana	3	0	92	10 628	18	10 307	394	243	1	607
Oshikoto	0	0	57	7 967	12	7 802	208	159	2	366
Otjozondjupa	1	0	162	12 222	23	12 076	284	194	1	343
Zambezi	0	0	23	3 568	5	3 451	135	77	0	128
Total	13	3	2 092	157 471	195	155 339	4 014	2 836	15	5 323

EPIDEMIOLOGICAL SITUATION IN NAMIBA

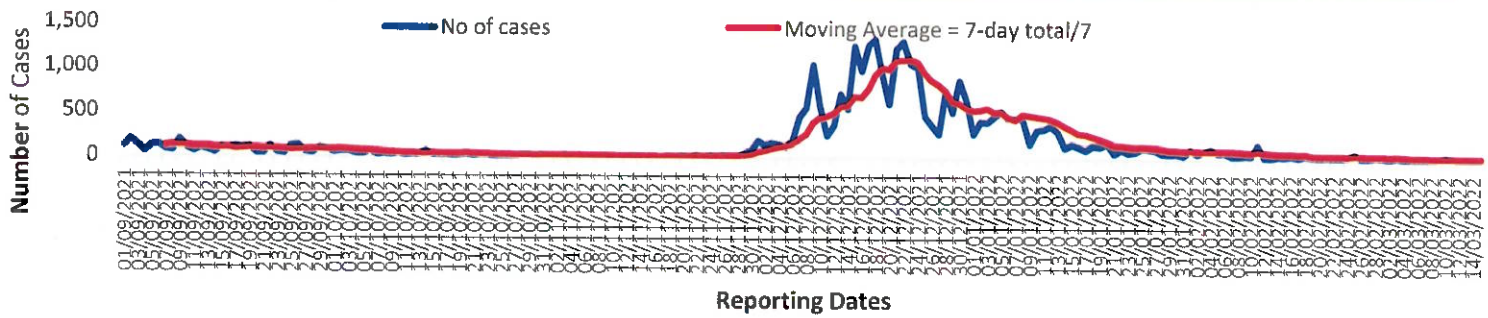
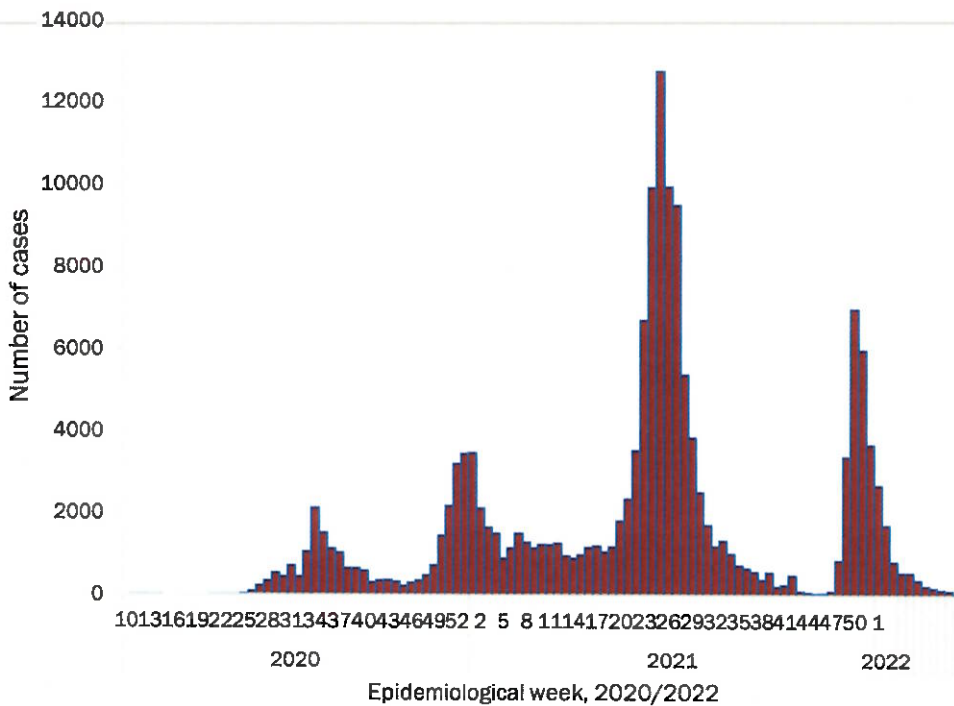


Figure 2: The 7 days moving average line chart for confirmed COVID-19 cases, 15 March 2022



- The highest peak of **12 787 (8%)** cases was recorded during week 25 of 2021 (Figure 3).
- The country has started seeing a gradual reduction in the average number of confirmed cases from 1424 to 29 from epi-week 26 to 40 of 2021.
- Another peak of **7005** cases was recorded in week 50 of 2021
- The number of cases have decreased in the last seven weeks as seen in the graph.

- The National Call Center continues operations for 24 hours daily.
- Today (15/03/2022), **206** calls were answered.

Figure 3: Epi-curve for confirmed COVID-19 cases, 15 March 2022

Table 4: Number of people in quarantine 15 March 2022

Region	Newly quarantined 24 hours	Cumulative number	Number discharged	Number in quarantine now
Erongo	0	7315	7166	149
Hardap	0	3263	3263	0
Kavango (East and West)	0	1686	1673	13
Khomas	0	3767	3767	0
Kharas	0	10000	10000	0
Kunene	0	6493	6493	0
Ohangwena	0	924	924	0
Omaheke	45	19908	19848	60
Omusati	9	3999	3990	9
Oshana	0	400	400	0
Oshikoto	85	27799	27755	44
Otjozondjupa	0	1932	1932	0
Zambezi	0	2184	2148	36
Total	139	89670	89359	311

- Since March 2020, **89 670** people have been placed into quarantine around the country.
- A total of **311** people are currently in quarantine, with no new admissions.

**Table 3: COVID-19 specimen recorded at the Laboratories
14 March 2022**

VARIABLES	TOTAL
Total samples received by the Laboratory	970 770
Total samples tested	952 433
Total samples re-tested	18 220
Total positive results	157 471
Total negative results	794 888
Total samples discarded	117
Invalid results	0
Total pending results	0
Indeterminant/Inconclusive	74
Suspected cases in 24 hours (excluding re-tests)	937

➤ The laboratory testing capacity has been enhanced; with a total of twenty-three (23) laboratories carrying out the testing of samples: NIP, Path-Care, UNAM Molecular, Central Veterinary Laboratory, Namib Poultry, NAMDEB, NamPath, Namibia Central Pathology, DiagnoLab, High Care, Alpha Medical Laboratory, Des-Jo Medical Test Centre, ProQuest Diagnostic Laboratory, MAXI, Medlink Laboratory Services, Biotech Medical, Covisure, Star Care, Soweto Medical Center, Hosea Kutako International Airport & Oshana Med Laboratory .

➤ To date, **970 775** tests (including **18 220** re-tests) have been conducted by authorized laboratories.

➤ Since the beginning of the outbreak, **168 673** contacts of confirmed cases have been identified, **12** new contacts were identified within the last 24 hours from **12** regions.

➤ Cumulatively, **166 971** contacts have completed their monitoring period, while **299** contacts are lost to follow-up and a total of **28 578 (18%)** contacts of confirmed cases have tested positive.

➤ Today, **133 (78%)** out of **171** active contacts were monitored.

- Of the total confirmed cases, **94 820 (60%)** are in the 20-49 years age-brackets which constitutes the majority of the recorded cases.
- A total of **24 913 (16%)** of the confirmed cases are among the 5-19 years category.
- A total of **18 147 (12%)** of the confirmed cases are among the 50 - 59 years group.
- The under 5 years age group make up **3 484 (2%)** of the total cases whereas, **16 107 (10%)** are above 60 years of age.

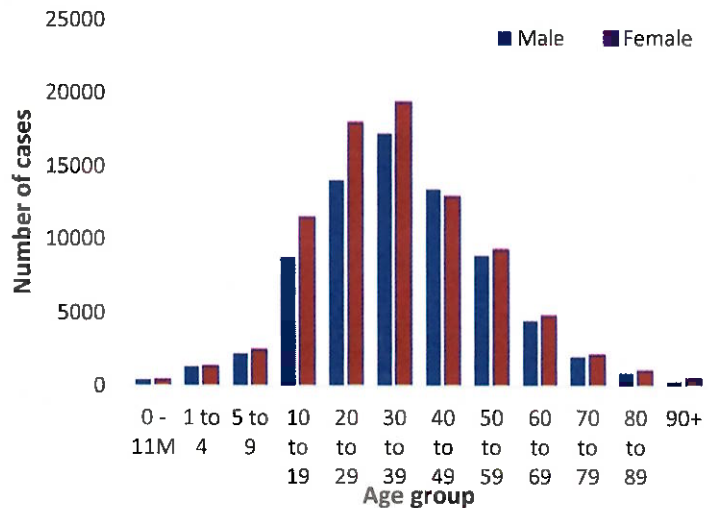


Figure 1: Age and Sex distribution of COVID-19 confirmed cases, 15 March 2022

Table 2: The current distribution for hospitalization of confirmed cases by region, 15 March 2022

Region	Hospitalized confirmed cases		Vaccinated		Intensive Care Unit		Vaccinated	
	Current	Previous	1 st dose	2 nd dose	Current	Previous	1 st dose	2 nd dose
Erongo	2	2	0	0	0	0	0	0
Hardap	1	1	0	1	0	0	0	0
Kharas	1	1	0	0	0	0	0	0
Kavango East	1	1	0	0	0	1	0	0
Kavango West	0	0	0	0	0	0	0	0
Khomas	5	4	0	1	3	2	0	0
Kunene	0	0	0	0	0	0	0	0
Oshana	0	2	0	0	0	0	0	0
Omaheke	0	0	0	0	0	0	0	0
Omusati	0	0	0	0	0	0	0	0
Oshana	2	3	0	0	0	0	0	0
Oshikoto	5	5	0	0	0	0	0	0
Otjozondjupa	0	0	0	0	0	0	0	0
Zambezi	0	0	0	0	0	0	0	0
Total	17	19	0	2	3	3	0	0

Table 6: Summary of COVID-19 vaccine 3rd doses administered, 15 March 2022

Region	Cumulative no. of persons vaccinated			
	Sinopharm	AstraZeneca	Pfizer	Booster Doses J&J
Erongo	1 606	601	2 792	338
Hardap	1 934	370	898	58
Kharas	771	161	303	60
Kavango East	509	193	239	416
Kavango West	489	247	209	258
Khomas	2 446	868	5 060	541
Kunene	1 482	376	579	454
Ohangwena	283	82	22	59
Omaheke	364	150	114	33
Omusati	827	308	388	61
Oshana	1 123	196	550	154
Oshikoto	768	159	186	29
Otjozondjupa	1 609	444	862	6
Zambezi	403	38	105	118
Total	14 614	4 193	12 307	2 585

Table 5: Summary of COVID-19 vaccine doses administered, 15 March 2022

Region	Cumulative no. of persons vaccinated with doses of Sinopharm, AstraZeneca, Sputnik V, Pfizer and Jassen & Johnson		Targeted Population	Vaccination Coverage (%)	Cumulative no. of Healthcare Workers vaccinated with doses of Sinopharm, AstraZeneca, Sputnik V, Pfizer and Jassen & Johnson	
	1 st doses	Fully vaccinated			1 st doses	Fully vaccinated
Erongo	41 760	37 137	161 966	23%	1 431	1 095
Hardap	27 377	23 764	69 121	34%	541	447
Kharas	22 783	19 252	69 786	28%	815	489
Kavango East	37 817	27 296	105 223	26%	1 264	1 011
Kavango West	27 945	20 784	57 210	36%	434	388
Khomas	100 496	88 186	362 620	24%	4 065	3 053
Kunene	26 825	22 089	72 991	30%	678	526
Ohangwena	28 329	24 410	174 546	14%	855	684
Omaheke	19 729	15 374	53 002	29%	374	270
Omusati	27 634	24 406	179 370	14%	1 000	790
Oshana	23 394	20 855	143 395	15%	1 612	1 331
Oshikoto	22 713	20 495	144 912	14%	863	740
Otjozondjupa	33 574	29 913	112 119	27%	896	651
Zambezi	8 304	7 628	73 010	10%	662	614
Total	448 680	381 589	1 779 271	21%	15 490	12 089

PUBLIC HEALTH ACTION (S)

- The COVID-19 vaccination programme is ongoing throughout the country.
- Public Health measures continue to be enforced as the situation is closely monitored.
- The government and development partners continue to prioritize the continuation of essential health services.

CHALLENGES

Slow vaccine uptake among members of the public, and circulation of anti-vaccination information.

RECOMMENDATIONS

Encourage the public to get vaccinated and strengthen community health awareness to counteract anti-vaccination information in circulation.

APPROVED

PP R

INCIDENT MANAGER
15 MARCH 2022

[Signature]

SECRETARIAT

For enquiries, please contact

Namibia Public Health Emergency Operations Centre;

 PHEOC@mhss.gov.na

 0800 100 100

 0851 100 100