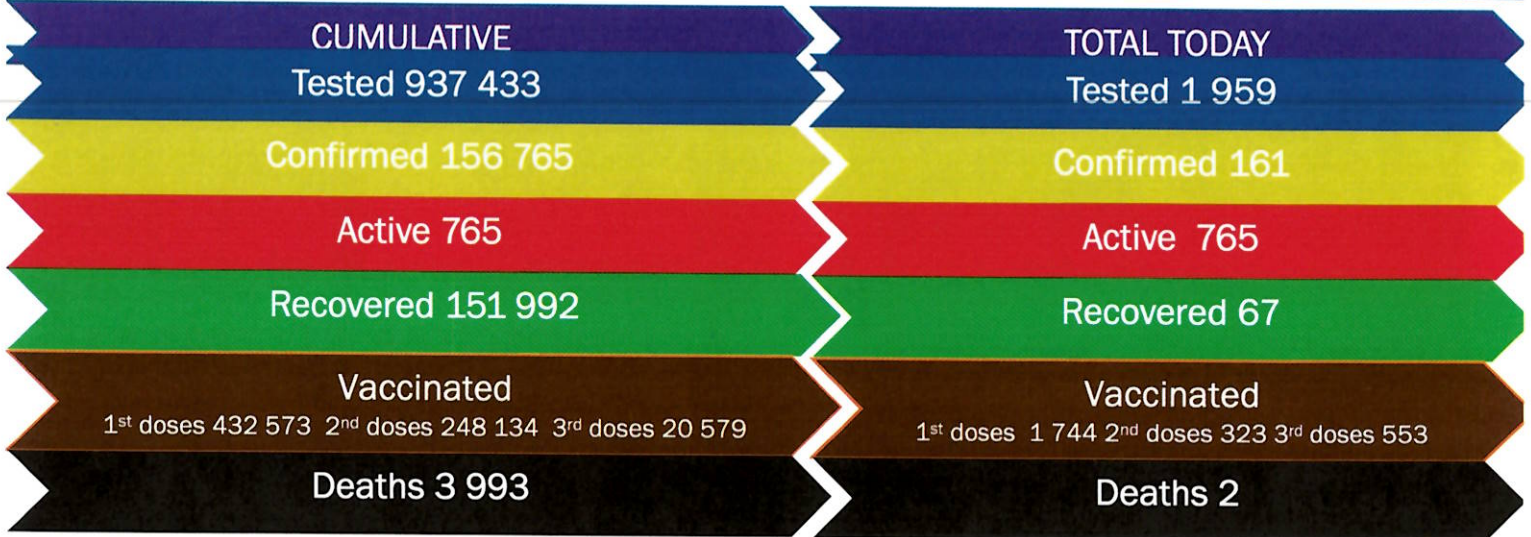




NAMIBIA COVID-19 SITUATION REPORT NO. 694

Outbreak Name	COVID-19 outbreak	Country affected	Namibia
Date & Time	11.02.2022 17h00	Investigation start Date	13 March 2020
Prepared by	Surveillance Team		

HIGHLIGHTS/SITUATION UPDATE (11/02/2022)



- A total of **156 765** cases have been recorded to-date, representing **6%** of the total population (**2 550 226**).
- More female cases **83 160 (53%)** have been recorded.
- Of the total confirmed cases, **5 315 (3%)** are Health Workers, with no new confirmation today.
 - 4 501 (85%) State; 806 (15%) Private, 8 (0.2%) Non-Governmental Organizations.
 - 5 287 (99%) recoveries and 25 (0.5%) deaths.
- The recovery rate now stands at **97%**.
- Khomas and Erongo regions reported the highest number of cases with **50 916 (32%)** and **22 556 (14%)** respectively.
- Of the total fatalities, **3 665 (92%)** are COVID-19 deaths while **328 (8%)** are COVID-19 related deaths.
- The case fatality rate now stands at **2.5%**.

Table 1: Distribution of confirmed COVID-19 cases by region, 11 February 2022

Region	Total cases daily	New reported re-infections	Total No. of cases	Active cases	Recoveries	Cumulative Deaths	Cumulative deaths with co-morbidities	Non-COVID deaths	Health Workers
Erongo	4	0	22 556	110	22 015	426	353	5	491
Hardap	2	0	8 381	11	8 105	265	168	0	160
ǀKharas	1	0	9 923	19	9 744	160	137	0	295
Kavango East	100	8	6 342	107	6 007	226	131	2	285
Kavango West	0	0	842	3	816	23	21	0	48
Khomas	5	0	50 916	138	49 877	900	704	1	1 815
Kunene	3	0	4 982	10	4 821	151	107	0	151
Ohangwena	3	0	5 994	41	5 754	197	120	2	221
Omaheke	16	0	5 114	155	4 669	289	204	1	143
Omusati	3	0	7 554	35	7 179	340	209	0	265
Oshana	4	0	10 596	36	10 166	393	242	1	607
Oshikoto	3	0	7 884	33	7 642	207	159	2	365
Otjozondjupa	9	3	12 142	42	11 815	284	194	1	341
Zambezi	8	0	3 539	25	3 382	132	76	0	128
Total	161	11	156 765	765	151 992	3 993	2 824	15	5 315

EPIDEMIOLOGICAL SITUATION IN NAMIBIA

Table 2: The current distribution for hospitalization of confirmed cases by region, 11 February 2022

Region	Hospitalized confirmed cases		Vaccinated		Intensive Care Unit		Vaccinated	
	Current	Previous	1 st dose	2 nd dose	Current	Previous	1 st dose	2 nd dose
Erongo	8	8	0	3	0	0	0	0
Hardap	2	2	0	0	0	0	0	0
ǀKaras	0	0	0	0	0	0	0	0
Kavango East	5	5	0	0	0	0	0	0
Kavango West	1	1	0	0	0	0	0	0
Khomas	9	6	0	2	2	2	0	1
Kunene	0	0	0	0	0	0	0	0
Ohangwena	6	6	1	0	0	0	0	0
Omaheke	2	2	0	0	0	0	0	0
Omusati	9	9	0	0	0	0	0	0
Oshana	3	3	0	0	0	0	0	0
Oshikoto	6	7	0	0	1	0	0	0
Otjozondjupa	1	0	0	1	0	0	0	0
Zambezi	8	2	0	0	0	0	0	0
Total	60	51	1	5	3	2	0	1

- Of the total confirmed cases, **94 525 (60%)** are in the 20-49 years age-brackets which constitutes the majority of the recorded cases.
- A total of **24 696 (16%)** of the confirmed cases are among the 5-19 years category.
- A total of **18 073 (12%)** of the confirmed cases are among the 50 - 59 years group.
- The under 5 years age group make up **3 442 (2%)** of the total cases whereas, **16 012 (10%)** are above 60 years of age.

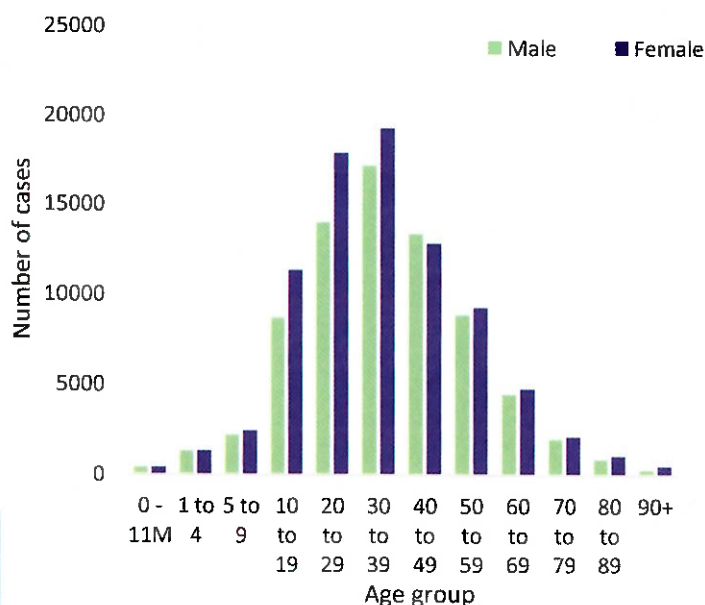


Table 3: COVID-19 specimen recorded at the Laboratories 11 February 2022

VARIABLES	TOTAL
Total samples received by the Laboratory	937 556
Total samples tested	919 317
Total samples re-tested	18 122
Total positive results	156 765
Total negative results	762 503
Total samples discarded	117
Invalid results	0
Total pending results	0
Indeterminant/Inconclusive	49
Suspected cases in 24 hours (excluding re-tests)	1 926

- The laboratory testing capacity has been enhanced; with a total of twenty-three (23) laboratories carrying out the testing of samples: NIP, Path-Care, UNAM Molecular, Central Veterinary Laboratory, Namib Poultry, NAMDEB, NamPath, Namibia Central Pathology, DiagnoLab, High Care, Alpha Medical Laboratory, Des-Jo Medical Test Centre, ProQuest Diagnostic Laboratory, MAXI, Medlink Laboratory Services, Biotech Medical, Covisure, Star Care, Soweto Medical Center, Hosea Kutako International Airport & Oshana Med Laboratory .
- To date, **937 433** tests (including **18 122** re-tests) have been conducted by authorized laboratories.
- Since the beginning of the outbreak, **166 820** contacts of confirmed cases have been identified, **198** new contacts were identified within the last 24 hours from **11** regions.
- Cumulatively, **164 407** contacts have completed their monitoring period, while **299** contacts are lost to follow-up and a total of **28 508 (17%)** contacts of confirmed cases have tested positive.
- Today, **738 (97%)** out of **759** active contacts were monitored.

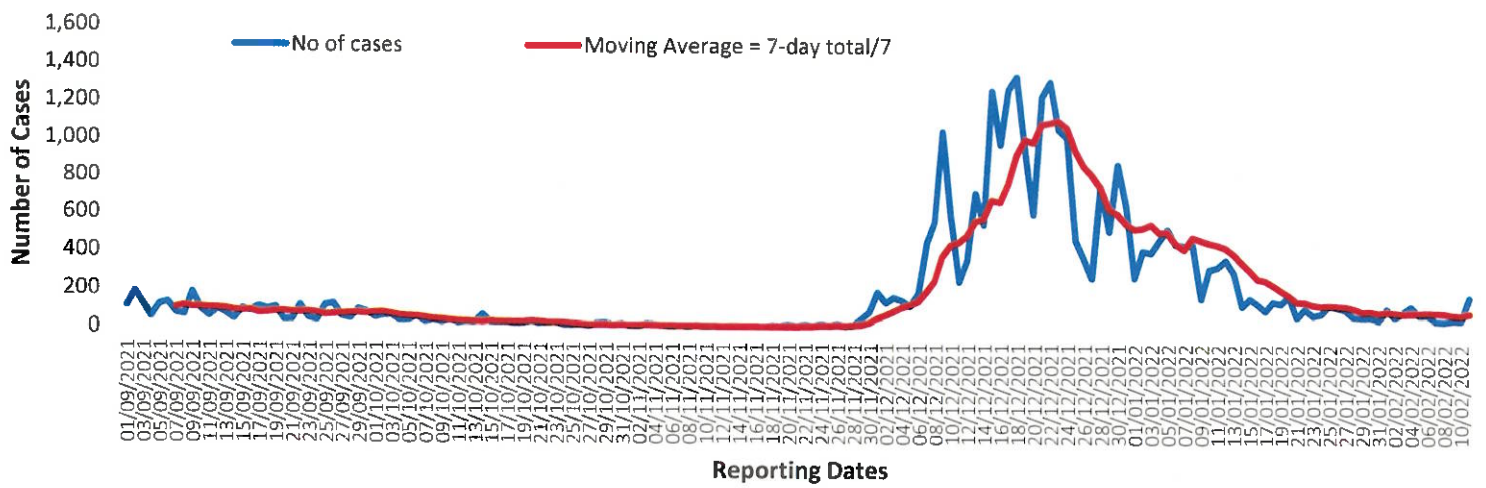


Figure 2: The 7 days moving average line chart for confirmed COVID-19 cases, 11 February 2022

- The highest peak of **12 787 (8%)** cases was recorded during week 25 of 2021 (Figure 3).
- The country has started seeing a gradual reduction in the average number of confirmed cases from 383 to 77 in epi-week 5.
- The number of cases have decreased in the last four weeks as seen in the graph.

- The National Call Center continues operations for 24 hours daily.
- Today (11/02/2022), **197** calls were answered.

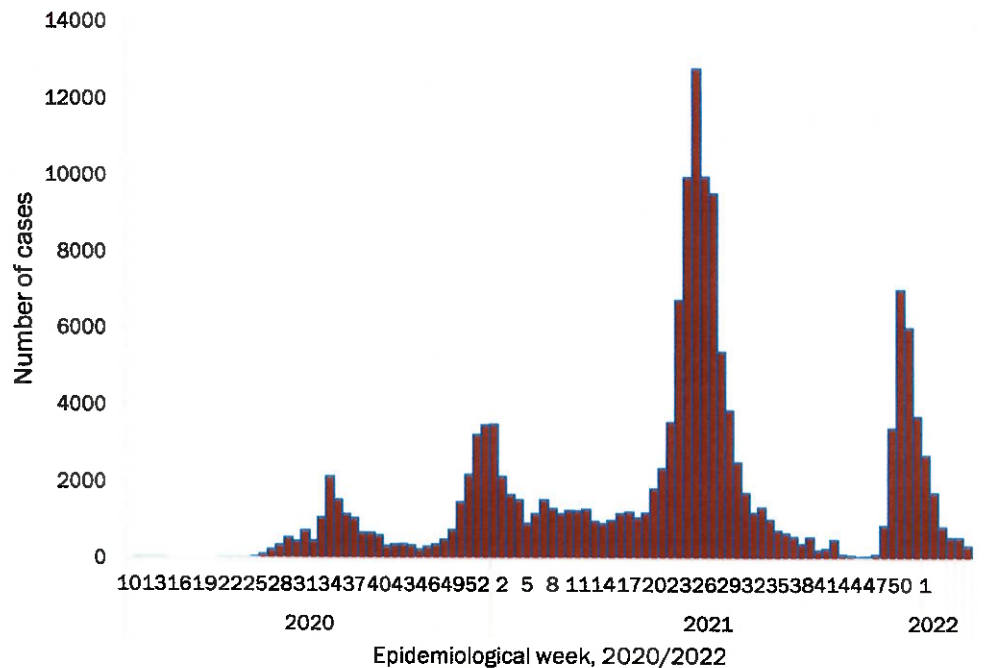


Figure 3: Epi-curve for confirmed COVID-19 cases, 11 February 2022

Table 4: Number of people in quarantine 11 February 2022

Region	Newly quarantined 24 hours	Cumulative number	Number discharged	Number in quarantine now
Erongo	10	6 973	6 949	24
Hardap	0	3 263	3 263	0
Kavango (East and West)	0	1 673	1 673	0
Khomas	0	3 763	3 754	9
Kharas	0	10 000	10 000	0
Kunene	0	6 493	6 493	0
Ohangwena	0	924	924	0
Omaheke	159	18 928	18 646	282
Omusati	0	3 947	3 936	11
Oshana	0	400	400	0
Oshikoto	16	27 206	27 157	49
Otjozondjupa	0	1 932	1 927	5
Zambezi	0	2 107	2 107	0
Total	185	87 609	87 229	380

- Since March 2020, **87 609** people have been placed into quarantine around the country.
- A total of **380** people are currently in quarantine, with **185** new admissions.

Table 5: Summary of COVID-19 vaccine doses administered, 11 February 2022

Region	Cumulative no. of persons vaccinated with doses of Sinopharm, AstraZeneca, Sputnik V, Pfizer and Jassen & Johnson		Targeted Population	Vaccination Coverage (%)	Cumulative no. of Healthcare Workers vaccinated with doses of Sinopharm, AstraZeneca, Sputnik V, Pfizer and Jassen & Johnson	
	1 st doses	Fully vaccinated			1 st doses	Fully vaccinated
Erongo	40 795	36 101	161 966	22%	1 415	1 077
Hardap	26 751	23 063	69 121	33%	525	432
Kharas	21 882	18 299	69 786	26%	803	474
Kavango East	34 387	24 840	105 223	24%	1 253	998
Kavango West	24 610	18 768	57 210	33%	429	383
Khomas	98 602	86 064	362 620	24%	4 036	3 021
Kunene	25 933	21 219	72 991	29%	658	514
Ohangwena	27 756	23 652	174 546	14%	845	670
Omaheke	19 386	14 944	53 002	28%	374	270
Omusati	27 065	23 814	179 370	13%	998	788
Oshana	22 708	20 199	143 395	14%	1 593	1 310
Oshikoto	22 420	20 146	144 912	14%	863	740
Otjozondjupa	32 629	28 936	112 119	26%	896	650
Zambezi	7 649	6 949	73 010	10%	639	594
Total	432 573	366 994	1 779 271	21%	15 327	11 921

Table 6: Summary of COVID-19 vaccine 3rd doses administered, 11 February 2022

Region	Cumulative no. of persons vaccinated		
	Sinopharm	AstraZeneca	Pfizer
Erongo	1 063	254	2 198
Hardap	982	173	761
Kharas	409	78	188
Kavango East	320	69	197
Kavango West	174	72	135
Khomas	1 883	561	4 116
Kunene	869	169	367
Ohangwena	137	8	3
Omaheke	131	50	45
Omusati	509	120	290
Oshana	790	96	432
Oshikoto	532	87	164
Otjozondjupa	992	288	662
Zambezi	125	20	60
Total	8 916	2 045	9 618

PUBLIC HEALTH ACTION (S)

- The COVID-19 vaccination programme is ongoing throughout the country.
- Public Health measures continue to be enforced as the situation is closely monitored.
- The government and development partners continue to prioritize the continuation of essential health services.

CHALLENGES

- Slow vaccine uptake among members of the public, and circulation of anti-vaccination information.




RECOMMENDATIONS

- Encourage the public to get vaccinated and strengthen community health awareness to counteract anti-vaccination information in circulation.

APPROVED

[Signature]
INCIDENT MANAGER
11 FEBRUARY 20227

[Signature]
SECRETARIAT

For enquiries, please contact
Namibia Public Health Emergency Operations Centre;
 PHEOC@mhss.gov.na
 0800 100 100
 0851 100 100