



NAMIBIA COVID-19 SITUATION REPORT NO. 819

Outbreak Name	COVID-19 outbreak	Country affected	Namibia
Date & Time	16.06 .2022 17h00	Investigation start Date	14 March 2020
Prepared by	Surveillance Team		

HIGHLIGHTS/SITUATION UPDATE (16/06/2022)

CUMULATIVE

Tested 1 054 097

Confirmed 165 783

Active 1 359

Recovered 163 333

Vaccinated

1st doses 493 781 2nd doses 276 102 Booster doses 70 801

Deaths 4 054

TOTAL TODAY

Tested 853

Confirmed 60

Active 1 359

Recovered 33

Vaccinated

1st doses 343 2nd doses 115 Booster doses 367

Deaths 0

- A total of **165 783** cases have been recorded to-date, representing **6%** of the total population (**2 550 226**).
- More female cases **88 146 (53%)** have been recorded.
- Of the total confirmed cases, **5 674 (3%)** are Health Workers, with **5** new confirmed today.
 - 4 772 (84.4%) State; 893 (15.4%) Private, 9 (0.1%) Non-Governmental Organizations.
 - 5 622 (100%) recoveries and 25 (0.5%) deaths.
- The recovery rate now stands at **96%**.
- Khomas and Erongo regions reported the highest number of cases with **54 508 (33%)** and **23 714 (14%)** respectively.
- Of the total fatalities **3 706 (92%)** are COVID-19 deaths while **348 (8%)** are COVID-19 related deaths.
- The case fatality rate now stands at **2.5%**.

Table 1: Distribution of confirmed COVID-19 cases by region, 16 June 2022

	New cases	New re-infections	Cum re-infections	Cum confirmed excluding re-infections	Active cases	Recoveries	Cum Deaths	Cum deaths with co-morbidities	Non-COVID deaths	Health Workers
Erongo	9	1	443	23 714	174	23 548	430	355	5	522
Hardap	0	0	119	8 794	33	8 615	265	168	0	193
Karas	5	0	307	10 668	134	10 679	162	138	0	323
Kavango East	9	0	74	6 675	34	6 484	229	132	2	305
Kavango West	0	0	4	865	23	823	23	21	0	50
Khomas	14	2	1345	54 508	509	54 435	908	706	1	1 931
Kunene	13	1	72	5 274	26	5 161	159	110	0	165
Ohangwena	2	1	54	6 191	132	5 903	208	126	2	228
Omaheke	2	0	70	5 373	26	5 125	291	205	1	152
Omusati	3	1	58	7 897	53	7 558	344	211	0	288
Oshana	1	0	107	10 847	127	10 424	402	244	1	613
Oshikoto	1	0	78	8 182	16	8 032	210	160	2	387
Otjozondjupa	1	0	219	13 167	62	13 035	288	196	1	388
Zambezi	0	0	28	3 628	10	3 511	135	77	0	129
Total	60	6	2978	165 783	1359	163 333	4 054	2 849	15	5 674

EPIDEMIOLOGICAL SITUATION IN NAMIBA

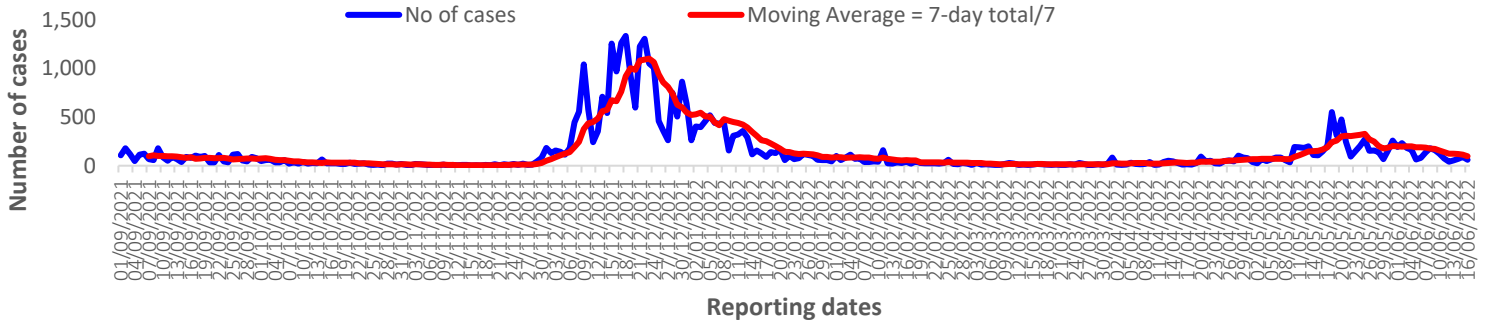
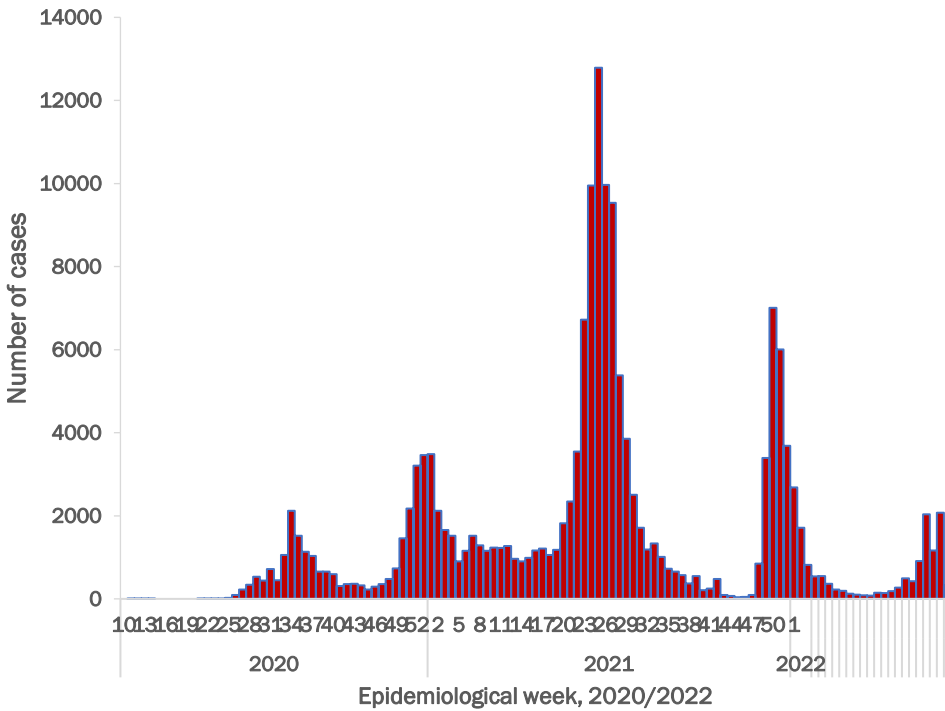


Figure 2: The 7 days moving average line chart for confirmed COVID-19 cases, 16 June 2022



- The highest peak of **12 787 (8%)** cases was recorded during week 25 of 2021 (Figure 3).
- The country has started seeing a gradual reduction in the average number of confirmed cases from 1424 to 29 from epi-week 26 to 40 of 2021.
- Another peak of **7005** cases was recorded in week 50 of 2021
- The number of cases have started increasing again in the last three weeks as seen on the graph.

- The National Call Center continues operations for 24 hours daily.
- Today (16/06/2022), **304** calls were answered.

Figure 3: Epi-curve for confirmed COVID-19 case, 16 June 2022

Table 4: Number of people in self - isolation 16 June 2022

Region	Newly self-isolated in 24 hours	Cumulative number	Number discharged	Number in self isolation
Erongo	0	8 329	8 015	314
Hardap	0	3 269	3 269	0
Kavango (East and West)	0	1 816	1 799	17
Khomas	0	3 781	3 767	14
Kharas	0	10 000	10 000	0
Kunene	0	6 928	6 889	39
Ohangwena	0	924	924	0
Omaheke	70	22 844	22 680	164
Omusati	0	4 010	4 010	0
Oshana	0	402	402	0
Oshikoto	29	29 348	29 288	60
Otjozondjupa	0	1 932	1 932	0
Zambezi	0	2 246	2 216	30
Total	99	95 829	95 191	638

- Since March 2020, **95 829** people have been placed into quarantine around the country.
- A total of **638** people are currently in self Isolation, with **99** new admissions.

**Table 3: COVID-19 specimen recorded at the Laboratories
16 June 2022**

VARIABLES	TOTAL
Total samples received by the Laboratory	1 054 041
Total samples tested	1 034 457
Total samples re-tested	19 467
Total positive results	165 783
Total negative results	868 529
Total samples discarded	117
Invalid results	0
Total pending results	0
Indeterminant/Inconclusive	145
Suspected cases in 24 hours (excluding re-tests)	844

- The laboratory testing capacity has been enhanced; with a total of twenty-three (23) laboratories carrying out the testing of samples: NIP, Path-Care, UNAM Molecular, Central Veterinary Laboratory, Namib Poultry, NAMDEB, NamPath, Namibia Central Pathology, DiagnoLab, High Care, Alpha Medical Laboratory, NCP, Maerua MC, Des-Jo Medical Test Centre, ProQuest Diagnostic Laboratory, MAXI, Medlink Laboratory Services, Biotech Medical, Covisure, Star Care, Soweto Medical Center, Hosea Kutako International Airport & Oshana Med Laboratory .
- To date, **1 054 097** tests (including **19 467** re-tests) have been conducted by authorized laboratories.
- Since the beginning of the outbreak, **176 418** contacts of confirmed cases have been identified, **52** contacts were identified within the last 24 hours from **10** regions.
- Cumulatively, **173 591** contacts have completed their monitoring period, while **299** contacts are lost to follow-up and a total of **29 190 (18%)** contacts of confirmed cases have tested positive.
- Today, **649 (75%)** out of **865** contacts were monitored.

- Of the total confirmed cases, **99 486 (60%)** are in the 20-49 years age-brackets which constitutes the majority of the recorded cases.
- A total of **26 612 (16%)** of the confirmed cases are among the 5-19 years category.
- A total of **19 031 (11%)** of the confirmed cases are among the 50 - 59 years group.
- The under 5 years age group make up **3 671 (2%)** of the total cases whereas, **16 983 (10%)** are above 60 years of age.

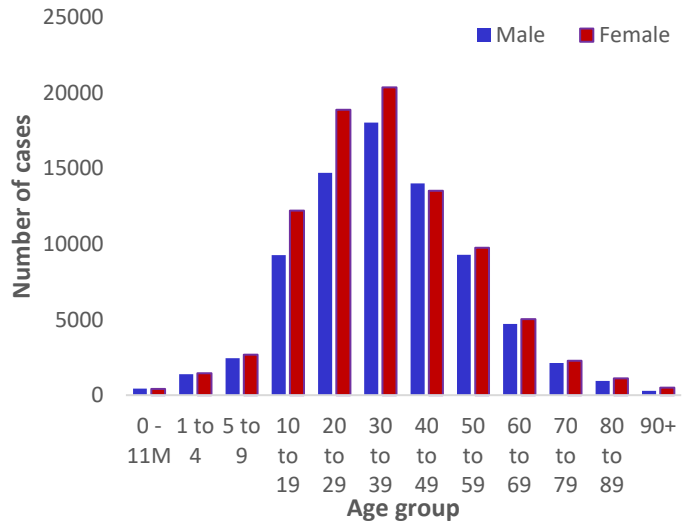


Figure 1: Age and Sex distribution of COVID-19 confirmed cases, 16 May 2022

Table 2: The current distribution for hospitalization of confirmed cases by region, 16 June 2022

Region	Hospitalized confirmed cases		Vaccinated		Intensive Care Unit		Vaccinated	
	Current	Previous	1 st dose	2 nd dose	Current	Previous	1 st dose	2 nd dose
Erongo	14	14	1	3	0	0	0	0
Hardap	0	0	0	0	0	0	0	0
Kharas	2	2	0	0	0	0	0	0
Kavango East	0	0	0	0	0	0	0	0
Kavango West	0	0	0	0	0	0	0	0
Khomas	6	6	0	1	2	2	0	0
Kunene	1	1	0	0	0	0	0	0
Ohangwena	5	4	0	0	0	0	0	0
Omaheke	9	9	0	0	0	0	0	0
Omusati	5	5	0	1	0	0	0	0
Oshana	1	2	0	1	0	0	0	0
Oshikoto	0	0	0	0	0	0	0	0
Otjozondjupa	7	10	0	1	0	0	0	0
Zambezi	0	0	0	0	0	0	0	0
Total	50	53	1	7	2	2	0	0

Table 6: Summary of COVID-19 vaccine 3rd doses administered, 16 June 2022

Region	Cumulative no. of persons vaccinated			
	Sinopharm	AstraZeneca	Pfizer	Booster Doses J&J
Erongo	2 208	1 044	3 577	896
Hardap	3 374	888	1 305	1 485
Kharas	1 634	430	562	311
Kavango East	1 230	508	672	1 097
Kavango West	1 260	573	730	965
Khomas	3 944	1 826	7 050	1 759
Kunene	2 346	794	775	1 247
Ohangwena	976	317	81	218
Omaheke	3 179	1 535	1 038	114
Omusati	2 255	860	771	429
Oshana	2 382	615	804	723
Oshikoto	1 642	453	334	284
Otjozondjupa	2 517	1 178	1 308	682
Zambezi	821	148	157	490
Total	29 768	11 169	19 164	10 700

Table 5: Summary of COVID-19 vaccine doses administered, 16 June 2022

Region	Cumulative no. of persons vaccinated with doses of Sinopharm, AstraZeneca, Sputnik V, Pfizer and Jassen & Johnson		Targeted Population	Vaccination Coverage (%)	Cumulative no. of Healthcare Workers vaccinated with doses of Sinopharm, AstraZeneca, Sputnik V, Pfizer and Jassen & Johnson	
	1 st dose	Fully vaccinated			1 st doses	Fully vaccinated
Erongo	43 411	38 814	161 966	24%	1 451	1 115
Hardap	30 242	25 886	69 121	37%	551	455
Kharas	24 492	20 787	69 786	30%	838	513
Kavango East	42 799	32 358	105 223	31%	1 291	1 038
Kavango West	32 662	26 232	57 210	46%	444	401
Khomas	104 979	92 829	362 620	26%	4 098	3 081
Kunene	29 635	24 232	72 991	33%	695	542
Ohangwena	33 526	27 389	174 546	16%	892	719
Omaheke	23 972	21 569	53 002	41%	430	342
Omusati	29 228	25 855	179 370	14%	1 028	810
Oshana	25 515	22 708	143 395	16%	1 655	1362
Oshikoto	26 429	23 245	144 912	16%	897	788
Otjozondjupa	36 252	32 278	112 119	29%	929	685
Zambezi	10 639	9 760	73 010	13%	720	679
Total	493 781	423 942	1 779 271	24%	15 919	12 530

PUBLIC HEALTH ACTION (S)

- The COVID-19 vaccination programme is ongoing throughout the country.
- The public is encouraged to continue adhering to COVID-19 preventative measures as the situation is being observed.
- The government and development partners continue to prioritize the continuation of essential health services.

CHALLENGES

Slow vaccine uptake among members of the public, and circulation of anti-vaccination information.




RECOMMENDATIONS

Encourage the public to get vaccinated and strengthen community health awareness to counteract anti-vaccination information in circulation.

APPROVED

INCIDENT MANAGER
16 JUNE 2022

SECRETARIAT

For enquiries, please contact
Namibia Public Health Emergency Operations Centre;
 PHEOC@mhss.gov.na
 0800 100 100
 0851 100 100