



NAMIBIA COVID-19 SITUATION REPORT NO. 896

Outbreak Name	COVID-19 outbreak	Country affected	Namibia
Date & Time	01.09.2022 17h00	Investigation start Date	14 March 2020

HIGHLIGHTS/SITUATION UPDATE (01/09/2022)

CUMULATIVE

Tested 1 077 130

Confirmed 166 675

Active 42

Recovered 165 591

Vaccinated

1st doses 567 347 2nd doses 286 157
Booster doses 96 868

Deaths 4 077

TOTAL TODAY

Tested 329

Confirmed 5

Active 42

Recovered 1

Vaccinated

1st doses 161 2nd doses 98 Booster doses 172

Deaths 0

- A total of **166 675** cases have been recorded to-date, representing **7%** of the total population (**2 550 226**).
- More female cases **88 605 (53%)** have been recorded.
- Of the total confirmed cases, **5 721 (3%)** are Health Workers, with **0** new confirmed today.
 - 4 805 (84%) State; 904 (15.8%) Private, 12 (0.2%) Non-Governmental Organizations.
 - 5 717 (100%) recoveries and 25 (0.5%) deaths.
- The recovery rate now stands at **98%**.
- Khomas and Erongo regions reported the highest number of cases with **54 7524 (33%)** and **23 868 (14%)** respectively.
- Of the total fatalities **3 720 (91%)** are COVID-19 deaths while **356 (9%)** are COVID-19 related deaths.
- The case fatality rate now stands at **2.4%**.

Table 1: Distribution of confirmed COVID-19 cases by region, 01 September 2022

	New cases	New re-infections	Cum re-infections	Cum confirmed excluding re-infections	Active cases	Recoveries	Cum Deaths	Cum deaths with co-morbidities	Non-COVID deaths	Health Workers
Erongo	0	0	451	23868	5	23 878	431	355	5	529
Hardap	1	0	120	8807	5	8 657	265	168	0	193
!Kharas	0	0	318	10726	0	10 881	163	138	0	324
Kavango East	0	0	77	6707	3	6549	230	132	2	315
Kavango West	0	0	4	865	0	846	23	21	0	50
Khomas	2	0	1 370	54754	6	55 206	911	706	1	1 941
Kunene	0	0	73	5293	1	5 203	162	110	0	166
Ohangwena	1	0	58	6271	10	6 100	217	127	2	235
Omaheke	0	0	71	5387	0	5 166	291	205	1	152
Omusati	0	0	64	8009	3	7 725	345	211	0	295
Oshana	0	0	110	10907	3	10 609	404	244	1	613
Oshikoto	0	0	79	8218	1	8 082	212	160	2	388
Otjozondjupa	1	0	225	13209	3	13 142	288	196	1	389
Zambezi	0	0	30	3654	2	3 547	135	77	0	131
Total	5	0	3050	166675	42	165 591	4 077	2 850	15	5 721

EPIDEMIOLOGICAL SITUATION IN NAMIBA

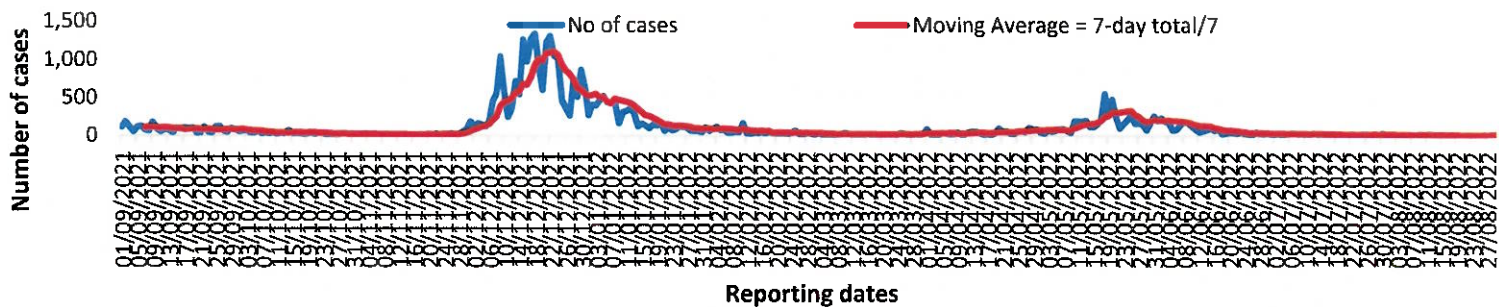
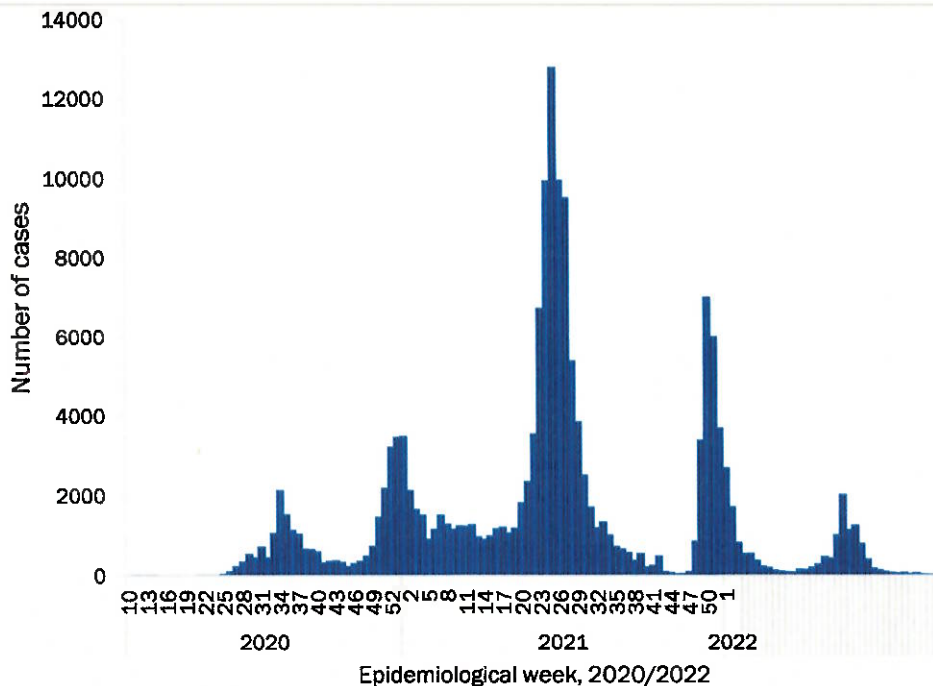


Figure 2: The 7 days moving average line chart for confirmed COVID-19 cases, 01 September 2022



- The highest peak of **12 787 (8%)** cases was recorded during week 25 of 2021 (Figure 3).
- The country has started seeing a gradual reduction in the average number of confirmed cases from 1424 to 29 from epi-week 26 to 40 of 2021.
- Another peak of **7005** cases was recorded in week 50 of 2021.
- The number of cases have started decreasing in the last three weeks as seen on the graph.

- The National Call Center continues operations for 24 hours daily.
- Today (01/09/2022), **189** calls were answered.

Figure 3: Epi-curve for confirmed COVID-19 case, 01 September 2022

Table 4: Number of people in quarantine 01 September 2022

Region	Newly quarantined 24 hours	Cumulative number	Number discharged	Number in quarantine now
Erongo	0	8 698	8 698	0
Hardap	0	3 269	3 269	0
Kavango (East and West)	0	1 852	1 852	0
Khomas	0	3 781	3 781	0
Kharas	0	10 000	10 000	0
Kunene	0	7 000	6 987	13
Ohangwena	0	924	924	0
Omaheke	9	24 195	24 184	11
Omusati	0	4 072	4 072	0
Oshana	0	402	402	0
Oshikoto	1	29 863	29 853	10
Otjozondjupa	0	1 932	1 932	0
Zambezi	0	2 252	2 252	0
Total	10	98 240	98 206	34

- Since March 2020, **98 240** people have been placed into quarantine around the country.
- A total of **10** people are currently in quarantine, with **34** new admissions.

**Table 3: COVID-19 specimen recorded at the Laboratories
01 September 2022**

VARIABLES	TOTAL
Total samples received by the Laboratory	1 077 074
Total samples tested	1 057 301
Total samples re-tested	19 656
Total positive results	166 675
Total negative results	890 459
Total samples discarded	117
Invalid results	0
Total pending results	0
Indeterminant/Inconclusive	167
Suspected cases in 24 hours (excluding re-tests)	328

➤ The laboratory testing capacity has been enhanced; with a total of twenty-three (23) laboratories carrying out the testing of samples: NIP, Path-Care, UNAM Molecular, Central Veterinary Laboratory, Namib Poultry, NAMDEB, NamPath, Namibia Central Pathology, DiagnoLab, High Care, Alpha Medical Laboratory, NCP, Maerua MC, Des-Jo Medical Test Centre, ProQuest Diagnostic Laboratory, MAXI, Medlink Laboratory Services, Biotech Medical, Covisure, Star Care, Soweto Medical Center, Hosea Kutako International Airport & Oshana Med Laboratory .

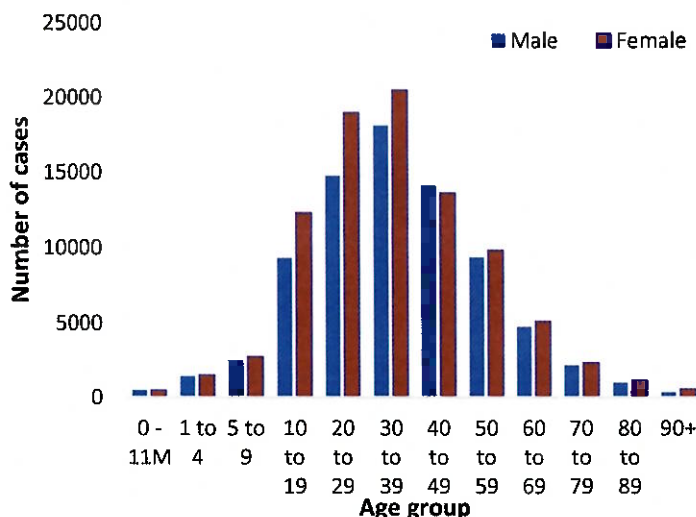
➤ To date, **1 077 130** tests (including **19 656** re-tests) have been conducted by authorized laboratories.

➤ Since the beginning of the outbreak, **178 536** contacts of confirmed cases have been identified, **99** contacts were identified within the last 24 hours from 7 regions.

➤ Cumulatively, **176 355** contacts have completed their monitoring period, while **303** contacts are lost to follow-up and a total of **29 307 (18%)** contacts of confirmed cases have tested positive.

➤ Today, **30 (100%)** out of 30 active contacts were monitored.

- Of the total confirmed cases, **99 951 (60%)** are in the 20-49 years age-brackets which constitutes the majority of the recorded cases.
- A total of **26 735 (16%)** of the confirmed cases are among the 5-19 years category.
- A total of **19 142 (11%)** of the confirmed cases are among the 50 - 59 years group.
- The under 5 years age group make up **3 723 (2%)** of the total cases whereas, **17 124 (10%)** are above 60 years of age.



4Figure 1: Age and Sex distribution of COVID-19 confirmed cases, 01 September 2022

Table 2: The current distribution for hospitalization of confirmed cases by region, 01 September 2022

Region	Hospitalized confirmed cases		Vaccinated		Intensive Care Unit		Vaccinated	
	Current	Previous	1 st dose	2 nd dose	Current	Previous	1 st dose	2 nd dose
Erongo	0	0	0	0	0	0	0	0
Hardap	0	0	0	0	0	0	0	0
ǀKaras	0	0	0	0	0	0	0	0
Kavango East	0	0	0	0	0	0	0	0
Kavango West	0	0	0	0	0	0	0	0
Khomas	1	1	0	0	0	0	0	0
Kunene	1	1	0	0	0	0	0	0
Ohangwena	0	0	0	0	0	0	0	0
Omaheke	0	0	0	0	0	0	0	0
Omusati	1	1	0	0	0	0	0	0
Oshana	1	2	0	1	0	0	0	0
Oshikoto	0	0	0	0	0	0	0	0
Otjozondjupa	1	1	0	0	0	0	0	0
Zambezi	0	1	0	0	0	0	0	0
Total	5	7	0	1	0	0	0	0

Table 6: Summary of COVID-19 vaccine 3rd doses administered, 01 September 2022

Region	Cumulative no. of persons vaccinated			
	Sinopharm	AstraZeneca	Pfizer	Booster Doses J&J
Erongo	2657	1199	3818	1479
Hardap	4241	971	1589	2605
Kharas	2407	657	714	997
Kavango East	2136	573	1253	2629
Kavango West	2092	806	1205	2049
Khomas	4678	2097	7539	2664
Kunene	3010	1086	957	1942
Ohangwena	1679	478	177	425
Omaheke	3743	1650	1187	844
Omusati	3369	1246	1059	938
Oshana	3005	785	961	1180
Oshikoto	2323	590	436	604
Otjozondjupa	2958	1360	1447	1645
Zambezi	1074	181	197	1277
Total	39372	13679	22539	21278

Table 5: Summary of COVID-19 vaccine doses administered, 01 September 2022

Region	Cumulative no. of persons vaccinated with doses of Sinopharm, AstraZeneca, Sputnik V, Pfizer and Jassen & Johnson		Targeted Population	Vaccination Coverage (%)	Cumulative no. of Healthcare Workers vaccinated with doses of Sinopharm, AstraZeneca, Sputnik V, Pfizer and Jassen & Johnson	
	1 st dose	Fully vaccinated			1 st doses	Fully vaccinated
Erongo	47 473	42 672	161 966	26%	1 466	1 120
Hardap	33 006	28 474	69 121	41%	553	459
Kharas	28 210	23 844	69 786	34%	849	527
Kavango East	51 158	39 376	105 223	37%	1 324	1 084
Kavango West	37 615	30 437	57 210	53%	450	406
Khomas	114 306	101 889	362 620	28%	4 140	3 132
Kunene	33 983	27 994	72 991	38%	695	544
Ohangwena	39 407	32 928	174 546	19%	949	775
Omaheke	25 786	23 326	53 002	44%	430	342
Omusati	35 325	30 367	179 370	17%	1 063	838
Oshana	31 782	28 877	143 395	20%	1 672	1 378
Oshikoto	32 070	28 004	144 912	19%	904	794
Otjozondjupa	41 699	37 379	112 119	33%	934	690
Zambezi	15 527	14 310	73 010	20%	734	693
Total	567 347	489 877	1 779 271	28%	16 163	12 782

➤ PUBLIC HEALTH ACTION (S)

- The COVID-19 vaccination programme is ongoing throughout the country.
- The public is encouraged to continue adhering to COVID-19 preventative measures as the situation is being observed.
- The government and development partners continue to prioritize the continuation of essential health services.

CHALLENGES

- Slow vaccine uptake among members of the public, and circulation of anti-vaccination information.
- Lack of transport to and from head office for sitrep signature.

RECOMMENDATIONS

- Encourage the public to get vaccinated and strengthen community health awareness to counteract anti-vaccination information in circulation.
- MoHSS must provide transport that will be available for sitrep team everyday or use digital signature.

APPROVED




INCIDENT MANAGER
01/09/ 2022



SECRETARIAT

For enquiries, please contact
Namibia Public Health Emergency Operations Centre;

 PHEOC@mhss.gov.na

 0800 100 100

 0851 100 100