

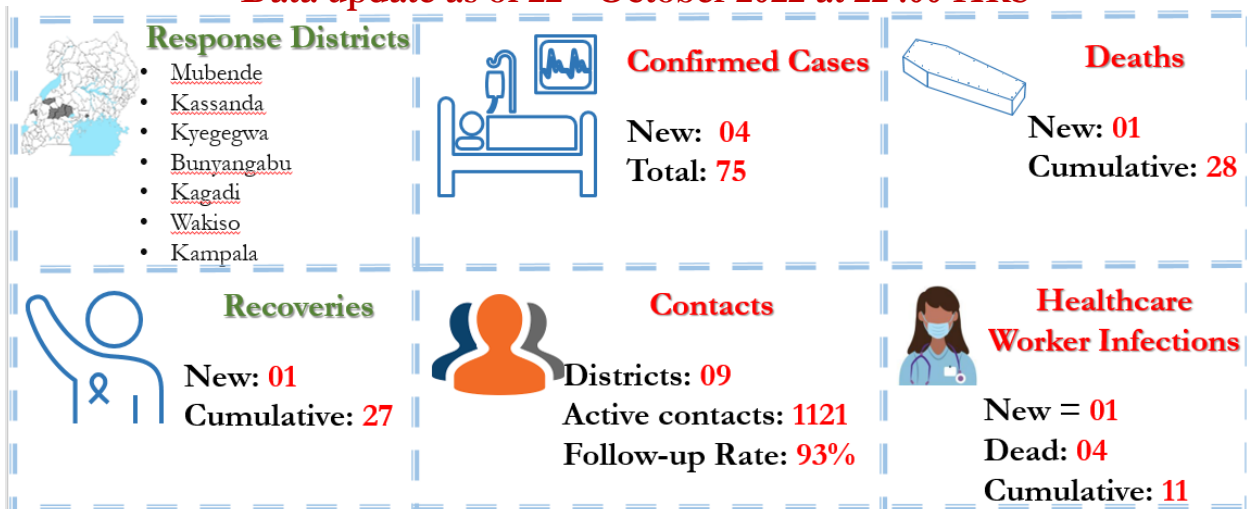
EBOLA VIRUS DISEASE

Republic of Uganda



Situation Report 32

Data update as of 22nd October 2022 at 22 :00 HRS



Key Highlights

On 20th September 2022, the Ministry of Health declared an outbreak of Sudan ebolavirus (SVD) after a case managed at Mubende Regional Referral Hospital (MRRH) in Mubende district was confirmed through testing at the Uganda Virus Research Institute (UVRI). This followed investigations by the National Rapid Response Team of suspicious deaths that had occurred in the district earlier in the month. This is the first time in more than a decade that Uganda reports an outbreak of Sudan ebolavirus.

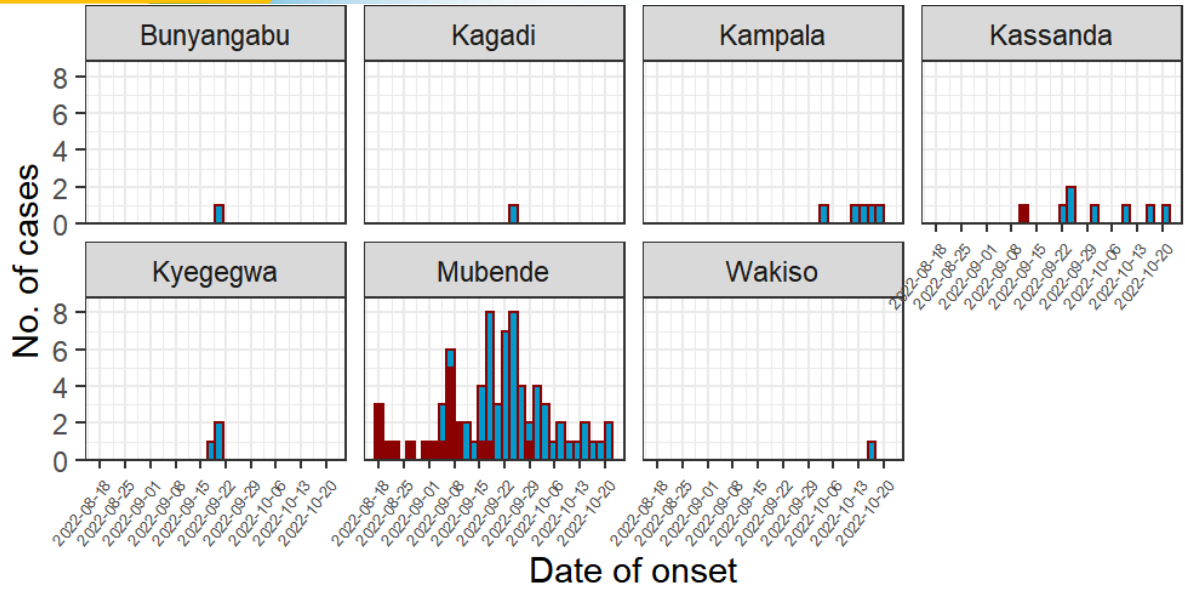
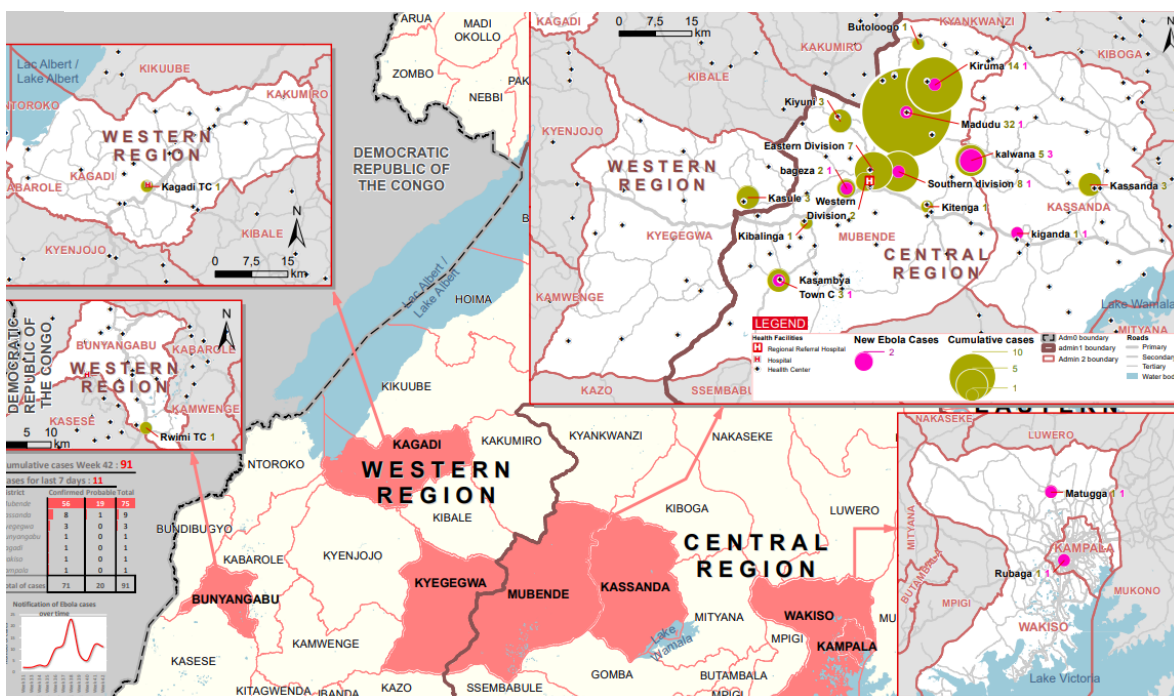


Figure 1: Time analysis of affected persons by district

- Today marks 33 days of responding to the EVD outbreak, first case was confirmed on 19-Sep-2022.
- Four newly confirmed EVD cases in the past 24 hours – two confirmed from Kampala, one from Wakiso and one from Mubende. All were contacts under follow up that were linked to known cases.
- One new confirmed death reported from Entebbe within the past 24 hours.
- One Healthcare worker infection reported within the past 24 hours in Mubende district.
- Case Fatality Ratio (CFR) among confirmed cases is 28/75 (37%).
- Contacts actively being followed-up in nine districts, follow-up rate in the past 24 hours was 93%

Figure 2: Place analysis of affected persons by district and sub-county



Summary of Cases updates as of 22nd October 2022 at 22:00 HRS

	Last 24 Hours								Cumulative							
	MUB	KYE	KAS	KAG	WAK	KLA	BUN	Total	MUB	KYE	KAS	KAG	WAK	KLA	BUN	Total
Confirmed Cases	01	00	00	00	01	02	00	04	59	03	05	01	01	05	01	75
Deaths																
Confirmed	00	00	00	00	01	00	00	00	23	01	02	01	00	01	00	28
Probable	-	-	-	-	-	-	-	-	19	00	01	00	00	00	00	20
Confirmed HCW																
Cases	01	00	00	00			00	01	09	00	00	01	00	00	01	11
Deaths	00	00	00	00			00	00	03	00	00	01	00	00	00	04

Table Acronyms: MUB=Mubende, KYE=Kyegegwa, KAS=Kassanda, KAG=Kagadi, WAK = Wakiso, KLA = Kampala, BUN=Bunyangabu, HCW=Healthcare Worker

Contact Tracing, Alert Management, Evacuations, Burials and Laboratory summaries as of 22nd October 2022 at 22:00 HRS

Updated 22Oct22 at 22:00 hrs	Last 24 Hours													Total
	MUB	KYE	FPC	KAS	KAG	KAK	KLA	LUW	NAK	NTG	MTN	MTM	BUN	
Contacts listed	39	0	0	52	0	3	8	0	0	0	6	1	0	109
Contacts completed 21 days of follow-up	8	0	1	0	0	0	0	0	0	0	0	0	0	9
Contacts under active follow-up	853	0	0	104	0	12	67	5	2	12	60	6	0	1121
Contacts followed-up today (% follow-up rate)	808 (95)	0	0	104 (100)	0	12 (100)	63 (94)	5 (100)	2 (100)	8 (67)	41 (68)	5 (83)	0	1046 (93)
Number of Contacts developing symptoms	0	0	0	7	0	0	3	0	0	0	1	0	0	11
Number of Contacts evacuated	0	0	0	4	0	0	0	0	0	0	0	0	0	4
Signals / Calls received	46	0	0	33	2	3	13	7	0	1	0	0	14	119
Alerts received	41	0	0	33	2	3	13	6	0	1	0	0	14	113
Alerts verified (%)	41 (100)	0	0	33 (100)	2 (100)	3 (100)	13 (100)	6 (100)	0	1 (100)	0	0	14 (100)	113 (100)
Alerts meeting suspect case definition	21	0	0	14	1	1	0	0	0	1	0	0	0	38
Alerts evacuated	18	0	0	9	1	1	0	0	0	1	0	0	0	30
SDB death alerts	7			0										7
SDB undertaken - Community deaths	5			0										5
- Healthcare facility deaths	0			0										0
Samples collected	37	0	0	1	0	0	10	0	0	1	0	0	0	49
EMS Ambulance fleet	16			8										24
EMS alerts handled	29			45	1	1	3			1				80
EMS evacuations - to ED	13			4		1	0			1				19
- to ETU	15					0	3							18
- to Madudu	4					0	0							4
- inter-facility	10					0	0							10
- intra-facility	4					0	0							4
- declined	2					0	0							2
	Cumulative													
Contacts listed	1746	58	3	196	23	70	77	5	8	12	60	6	48	2312
Contacts completed 21 days of follow-up	777	55	3	33	23	58	0	0	6	0	0	0	48	1003
SDB death alerts	52													
SDB undertaken - Community deaths	39			15										54
- Healthcare facility deaths	2													2
Samples collected	767	33	43	22	0	21	105	12	3	0	0	0	3	1009

Table Acronyms: MUB=Mubende, KYE=Kyegegwa, FPC= Fort Portal City, KAS=Kassanda, KAG=Kagadi, KLA = Kampala, BUN = Bunyangabu, KAK = Kakumiro, NAK = Nakasongola, LUW = Luweero, MTN = Mityana, MTM = Mitooma, NTG = Ntungamo

Actions to date

The Ministry of Health (MoH), Districts, and partners in Uganda are implementing several outbreak control interventions in Mubende and her surrounding districts to contain the disease spread. An overview of key activities is summarized below:

**Response
Pillar**

Key Updates in the past 24 hours

<i>Coordination</i>	<ul style="list-style-type: none"> ➤ Daily DTF meetings within all affected districts ➤ Police strategically deployed around the borders of Kassanda and Mubende to support enforcement of presidential directives in affected districts
<i>Surveillance and Contact tracing</i>	<ul style="list-style-type: none"> ➤ Contacts identified of confirmed and probable cases in the districts of: Mubende, Kyegegwa, Fort Portal City, Kassanda, Kagadi, Kampala, Bunyangabu, Kakumiro, Nakasongola, Mitooma, Ntungamo and Luweero. Alerts being received and validated country-wide. ➤ All listed contacts in Bunyangabu, Kagadi, Fort Portal City and Kyegegwa completed 21 days of follow-up. ➤ Total contacts under follow up is 1,121 in nine districts. The follow up rate for contacts is at 93% ➤ A total of 113 alerts validated, 38 of which met the suspected case definition and 30 evacuated ➤ Team in KCCA conducted PopCAB activity in Kawempe and Rubaga divisions. ➤ Since the last confirmed cases in Kyegegwa, Kagadi and Bunyangabu, no new cases have been reported from these districts for 31 days, 25 days and 23 days respectively
<i>Laboratory</i>	<ul style="list-style-type: none"> ➤ Mobile laboratory operational at the Mubende ETU with adequate test kits facilitating timely sample collection, testing and release of test results.
<i>Case Management</i>	<ul style="list-style-type: none"> ➤ Three new admissions in Mubende, three in Entebbe and two in Madudu ETUs within the last 24 hours ➤ One recovery recorded in Entebbe ETU.
<i>Emergency Medical Services</i>	<ul style="list-style-type: none"> ➤ EMS call centres in Kassanda, KCCA and Mubende operational ➤ A total of 29 evacuations done in Mubende, 45 in Kassanda, one in Kagadi, one in Kakumiro, one in Ntungamo and three in Kampala.
<i>Safe and Dignified Burials</i>	<ul style="list-style-type: none"> ➤ Conducted five safe and dignified burials in Mubende in the past 24 hours ➤ Training of burial team in Kassanda commenced today
<i>Infection Prevention and Control (IPC) and WASH</i>	<ul style="list-style-type: none"> ➤ Team at KCCA held a mentorship session with 30 IPC mentors on proper PPE Donning and Doffing, risk assessment, preparing Chlorine solutions, setting up Screening and Isolation area and no touch care for suspected cases. ➤ Team in Mubende formulated IPC Compliance team at ETU Comprising of all heads of Pillars and resolved on conducting IPC Orientation for the team and developed an ETU work plan. ➤ General cleaning and decontamination of Suspected and Confirmed Wards as per routine schedule. ➤ Conducted follow up assessment of MRRH accident and emergency unit used as Suspected ward to follow up on gaps identified during baseline assessment. ➤ Team in Mubende met the ETU burial team and discussed on dead body management and safe and dignified burial ➤ Distributed IPC Kit to Ikriza Drug Shop in Nganji Village in Mubende that has provided care to two EVD cases. ➤ Updated the IPC ring to include the three new cases and plan for action. ➤ Mentorship of hygienists at Itojo Hospital in Ntungamo ➤ Conducted Cleaning and decontamination of two households of two confirmed EVD cases in Kawoyakiza Village Madudu District and Kimwanyi Cell Kasambya ward, Kasambya Town Council.
<i>Risk Communication</i>	<ul style="list-style-type: none"> ➤ On-going media activities in Mubende and Kassanda: radio talk shows, 15 radio spots continue to run daily, Community audio tower messages continue to run in 10 hotspot areas
<i>Social Mobilisation</i>	<ul style="list-style-type: none"> ➤ Team in Kassanda worked with the contact tracing pillar members to address stigmatization in Kalamba village following the confirmation of EVD cases in that village. Together with the Local Council chairman, the team sensitized the residents on the signs, symptoms, and prevention of EVD, care for the patients, and the importance of early reporting. ➤ Team in Mubende conducted a planning meeting with the Village Task Force of Kisekende cell - South Division, attended by the LCI chairman, two VHTs, the Community Development Officer, and the health assistant.
<i>Community Engagement</i>	<ul style="list-style-type: none"> ➤ RCCE team in Mubende held a dialogue with vendors of Kibati food market reaching 25 people adults (17 females; 3 males; 5 children). Major concerns were about ending EVD in the shortest time possible and their responsibilities and contributions to the response. ➤ Team in Mubende held an EVD engagement at Ngabano Trading centre attended by 40 people (24 Females, 16 males). Issues discussed included: Continuity of essential health services during the lockdown, Provision of PPEs for families of the deceased to enable participation in the burial of their people, Access to the ETU to know the status of suspected cases, Differentiating EVD from other diseases, Protection of the burial teams against EVD, Availability of EVD vaccine

Logistics

- One Laptop and three desktop Computers from USAID/SSCS for eLMIS support in RRH, Madudu and Mubende DLG.
- Received 500 thermometers from UNICEF for Mubende health facilities, 935 for schools in Mubende and 917 for schools in Kassanda.
- UNICEF delivered child-friendly poster for schools in Mubende, Kassanda and all the other moderate districts.
- Additional fleet of 5 fuelled cars from Africa CDC provided.
- Four mini buses offered by the MoH to support movement.
- WHO delivered 10 mini buses to support the transportation of health workers, procured admission kits for the patients at the 2 ETUs (Mubende RRH and Madudu) in addition to hiring a hotel providing all services to 29 suspects in Madudu for 1 month.
- WHO is providing food at the Madudu treatment site for 7 days to allow WFP organise for the food support at the facility.
- WHO supported the repair of the electric line providing power to the ETU solving the blackout issue at the site.
- Construction of the ETU at the works yard in Mubende is ongoing.
- WFP has provided trucks to support NMS deliver EVD response supplies to districts.
- MSH provided computers to Mubende to support inventory management at MRRH, DHO stores and Madudu.
- Baylor and METS have provided computers, internet connection at the ETU lab and for the MHPSS team.
- MSF support with emergency medicines to the ETU at MRRH and the Madudu treatment site.

Mental Health and Psychosocial Social Support

- Team in Mubende offered supportive counselling to four confirmed cases and eight clients from the suspected wing; conducted a phone follow up to the 8-months old baby boy whose mother is an EVD confirmed client to ascertain his wellbeing
- One recovered clients and eleven clients from the Mubende ETU suspects ward and one from Madudu were reunited with their families.
- Team continually updates families of confirmed and suspects clients concerning status of their loved ones.
- MHPSS team in Mubende carried out a school engagement at St. Andrews Secondary school in Madudu, where a recently discharged 17-year old girl studies from; met with the LC1 chairperson of Kassambya, where a discharged 5-yr girl stays

Critical Challenges listed

- No ambulance stationed in Mityana; currently being supported by the Mubende fleet
- Insufficient supplies of IEC, stationery and IPC material for Ntungamo, Nakasongola, and Mityana. Requests made to the Logistics pillar
- Myths and misconceptions and low EVD risk perception still exist within some of the affected communities.
- Human resource challenges in light of increasing community-based evacuations and admissions as well as need to expand suspect case isolation

Key messages to the public

- People in the community should call an alert hotline or go to a health facility if they have symptoms (e.g., fever, headache, weakness, vomiting, bloody diarrhoea or urine, bleeding from body openings).
- Current hotline numbers for Mubende are: **0800200043 (Toll-free), 0762640374, 0762640379, 0708062203, 0702869375, 0708052008, 0762659215 (Not toll-free)**. For Kampala Metropolitan Area: **0800 299000 (toll-free), 0756979282, 0782160174, 0780384997, 0771414202 (non-toll free)**. Bunyangabu: **0787437139**
- Free alert SMS on **6767** starting with the 'ALERT' key word; Free alert SMS to U-report on 8500
- Community should not fear people who have been discharged from the ETU and returned home.