



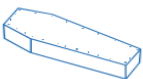



# EBOLA VIRUS DISEASE

## Republic of Uganda



### Situation Report 33

Data update as of 23<sup>rd</sup> October 2022 at 22 :00 HRS

 <p><b>Response Districts</b></p> <ul style="list-style-type: none"> <li>• Mubende</li> <li>• Kassanda</li> <li>• Kyegegwa</li> <li>• Bunyangabu</li> <li>• Kagadi</li> <li>• Wakiso</li> <li>• Kampala</li> </ul>	 <p><b>Confirmed Cases</b></p> <p>New: <b>15</b> Total: <b>90</b></p>	 <p><b>Deaths</b></p> <p>New: <b>00</b> Cumulative: <b>28</b></p>
 <p><b>Recoveries</b></p> <p>New: <b>00</b> Cumulative: <b>26</b></p>	 <p><b>Contacts</b></p> <p>Districts: <b>09</b> Active contacts: <b>1161</b> Follow-up Rate: <b>94%</b></p>	 <p><b>Healthcare Worker Infections</b></p> <p>New = <b>02</b> Dead: <b>04</b> Cumulative: <b>13</b></p>

## Key Highlights

On 20<sup>th</sup> September 2022, the Ministry of Health declared an outbreak of Sudan ebolavirus (SVD) after a case managed at Mubende Regional Referral Hospital (MRRH) in Mubende district was confirmed through testing at the Uganda Virus Research Institute (UVRI). This followed investigations by the National Rapid Response Team of suspicious deaths that had occurred in the district earlier in the month. This is the first time in more than a decade that Uganda reports an outbreak of Sudan ebolavirus.

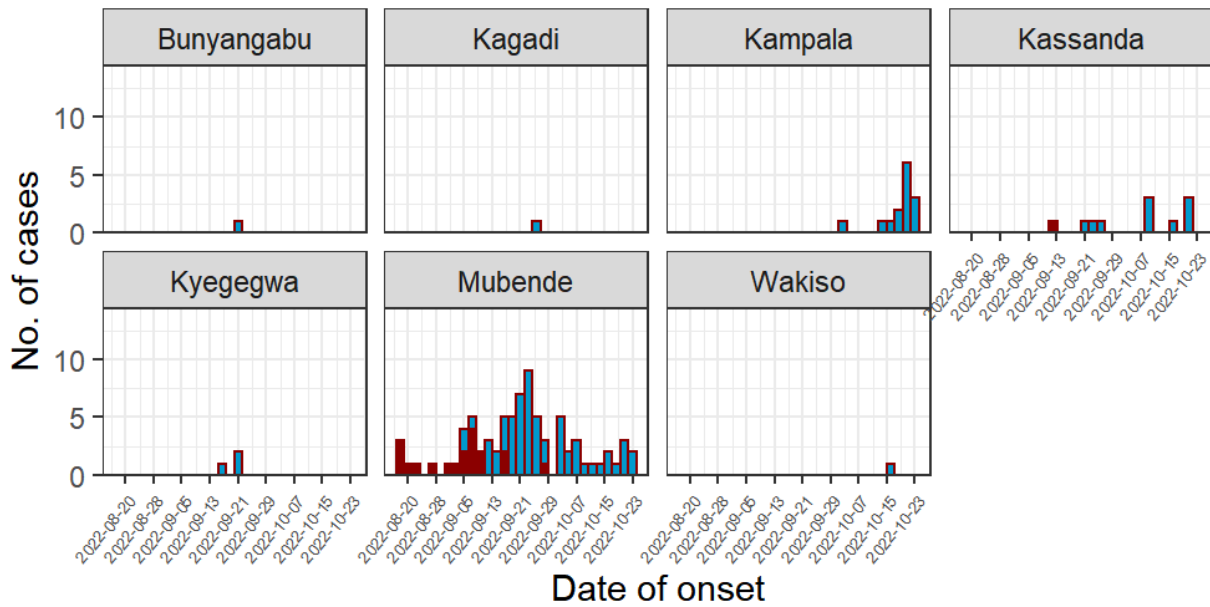
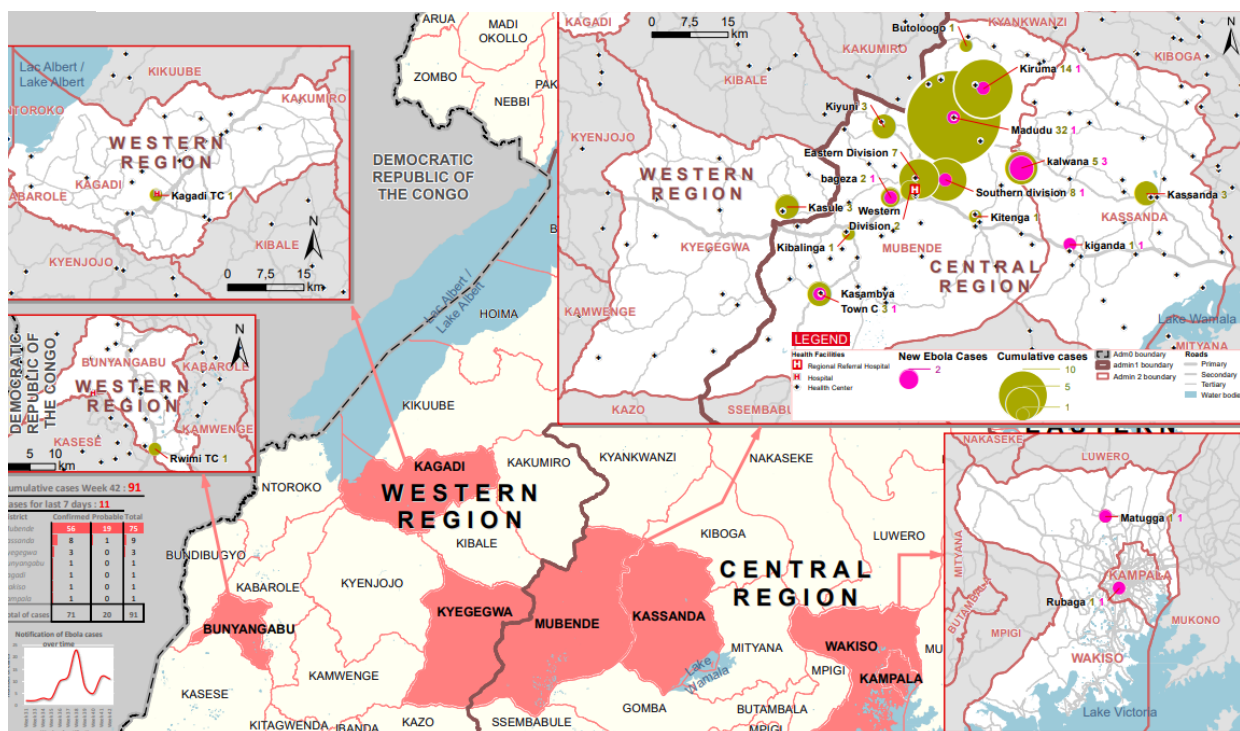


Figure 1: Time analysis of affected persons by district

This followed investigations by the National Rapid Response Team of suspicious deaths that had occurred in the district earlier in the month. This is the first time in more than a decade that Uganda reports an outbreak of Sudan ebolavirus.

- Today marks 34 days of responding to the EVD outbreak, first case was confirmed on 19-Sep-2022.
- Fifteen newly confirmed EVD cases in the past 24 hours – ten confirmed from Kampala, two from Mubende and three from Kassanda. All are linked to known cases.
- Zero new confirmed deaths reported within the past 24 hours.
- Case Fatality Ratio (CFR) among confirmed cases is 28/90 (31%).
- Two new healthcare worker infections reported from Kampala; both were contacts under follow up
- Contacts actively being followed-up in nine districts, follow-up rate in the past 24 hours was 94%

Figure 2: Place analysis of affected persons by district and sub-county



## Summary of Cases updates by Sub-county as of 23<sup>rd</sup> October 2022 at 22:00 HRS

District	Sub-county (n=23)	Confirmed cases (n=90)	Confirmed deaths (n=28)	Probable cases (n=20)
<b>Bunyangabu</b>	Rwimi TC	01	00	00
<b>Kagadi</b>	Kagadi TC	01	01	00
<b>Kassanda</b>	Kalwana	01	00	00
	Kassanda	02	00	01
	Kikandwa	05	02	00
	Kiganda	01	00	00
	Gomba	01	00	00
<b>Kyegegwa</b>	Kasule	03	01	00
<b>Wakiso</b>	Nanssana	01	00	00
<b>Kampala</b>	Rubaga	11	00	00
	Kawempe	02	00	00
	Makindye	01	00	00
<b>Mubende</b>	Bagezza	02	01	00
	Butologo	01	01	00
	Eastern Division	08	01	00
	Western Division	02	02	00
	Southern Division	07	03	01
	Kasambya	05	01	00
	Kiruuma	09	04	05
	Kiyuni	03	03	00
	Madudu	21	07	13
	Kibalinga	01	01	00
	Kitenga	01	00	00

Data harmonisation is an on-going process as patient classification changes between admissions, recoveries and fatalities.

\*All probable deaths reported as occurring before 20<sup>th</sup> September 2022.

## Case Management summaries as of 23<sup>rd</sup> October 2022 at 22:00 HRS

Updated 23Oct22 at 22:00 HRS		MUB	MAD	ENT	MUL	Total
Bed Capacity	# of beds in the Isolation Unit	30	08	00	120	158
	# of ETU beds	24	02	67	-	93
Bed Occupancy	# of beds occupied in the Isolation Unit today	18	02	00	17	37
	# of beds occupied in the ETU today	07	02	06	00	15
Admission	# of suspect cases admitted to the Isolation Unit today	11	02	-	17	30
	# of Cases admitted to the ETU today	01	00	12	00	13
	# of walk in patients to the isolation Unit	01	00	00	00	01
Severity	# of Mild cases in the ETU today	01	00	04	-	05
	# of Critical cases in the ETU today	10	00	02	-	12
Discharge	# of patients discharged from the ETU	00	01	05	00	06
	# of patients discharged from the Isolation Unit	17	01	00	00	18
Death	# of suspect cases that died in the Isolation Unit	00	00	-	00	00
	# of patients that died in the ETU	00	00	00	00	00

**Table Acronyms:** MUB = Mubende RRH ETU, MAD = Madudu HCIII, EBB = Entebbe RR Hospital, MUL = Mulago NRH

## Contact Tracing, Alert Management, Evacuations, Burials and Laboratory summaries as of 23<sup>rd</sup> October 2022 at 22:00 HRS

Updated 23Oct22 at 22:00 hrs	Last 24 Hours													Total
	MUB	KYE	FPC	KAS	KAG	KAK	KLA	LUW	NAK	NTG	MTN	MTM	BUN	
Contacts listed	84	0	0	29	0	1	2	0	0	0	6	1	0	123
Contacts completed 21 days of follow-up	10	0	0	19	0	0	0	0	0	0	0	0	0	29
Contacts under active follow-up	936	0	0	135	0	12	69	5	2	12	60	6	0	1237
Contacts followed-up today (% follow-up rate)	917 (98)	0	0	105 (78)	0	12 (100)	66 (96)	5 (100)	2 (100)	8 (67)	41 (68)	5 (83)	0	1161 (94)
Number of Contacts developing symptoms	2	0	0	13	0	0	0	0	0	0	1	0	0	16
Number of Contacts evacuated	2	0	0	5	0	0	0	0	0	0	0	0	0	7
Signals / Calls received	75	3	0	48	0	2	4	0	1	1	0	0	16	150
Alerts received	43	3	0	48	0	2	4	0	1	1	0	0	16	118
Alerts verified (%)	43 (100)	3 (100)	0	48 (100)	0	2 (100)	0 (0)	0	1 (100)	1 (100)	0	0	16 (100)	114 (97)
Alerts meeting suspect case definition	32	1	0	23	0	0	0	0	1	1	0	0	0	58
Alerts evacuated	26	1	0	8	0	0	0	0	1	1	0	0	0	37
SDB death alerts	9			0										9
SDB undertaken - Community deaths	4			0										4
- Healthcare facility deaths	0			0										0
Samples collected	44	0	0	3	0	0	15	0	1	1	0	0	1	65
EMS Ambulance fleet	16			8										24
EMS alerts handled	33	2	0	52	0	0	2	0	0	0	0	0	0	89
EMS evacuations - to ED	27						2							29
- to ETU	18													18
- to Madudu	1													1
- inter-facility	0													0
- intra-facility	0													0
- declined	5													5
	<b>Cumulative</b>													
Contacts listed	1830	58	3	227	23	71	79	5	8	12	60	6	48	2430
Contacts completed 21 days of follow-up	787	55	3	52	23	58	0	0	6	0	0	0	48	1032
SDB death alerts	61													
SDB undertaken - Community deaths	43			26										69
- Healthcare facility deaths	2													2

**Table Acronyms:** MUB=Mubende, KYE=Kyegegwa, FPC= Fort Portal City, KAS=Kassanda, KAG=Kagadi, KLA = Kampala, BUN = Bunyangabu, KAK = Kakumiro, NAK = Nakasongola, LUW = Luweero, MTN = Mityana, MTM = Mitooma, NTG = Ntungamo

### Actions to date

The Ministry of Health (MoH), Districts, and partners in Uganda are implementing several outbreak control interventions in Mubende and her surrounding districts to contain the disease spread. An overview of key activities is summarized below:

#### Response Pillar

#### Key Updates in the past 24 hours

##### Coordination

- Daily DTF meetings within all affected districts
- Police strategically deployed around the borders of Kassanda and Mubende to enforce presidential lock-down directives
- At least 15 Sub-county / town council task force committees have been re-activated in Bunyangabu

##### Surveillance and Contact tracing

- Contacts identified of confirmed and probable cases in the districts of: Mubende, Kyegegwa, Fort Portal City, Kassanda, Kagadi, Kampala, Bunyangabu, Kakumiro, Nakasongola, Mitooma, Ntungamo and Luweero. Alerts being received and validated country-wide.
- All listed contacts in Bunyangabu, Kagadi, Fort Portal City and Kyegegwa completed 21 days of follow-up.
- Total contacts under follow up is 1,161 in nine districts. The follow up rate for contacts is at 94%
- A total of 118 alerts validated, 58 of which met the suspected case definition and 37 evacuated

	<ul style="list-style-type: none"> <li>➤ Mentored six health Workers from Kigambo HCII and Kakabara HCIII in Kyegegwa on active case search and shared the EVD case definition.</li> <li>➤ Since the last confirmed cases in Kyegegwa, Kagadi and Bunyangabu, no new cases have been reported from these districts for 32 days, 26 days and 24 days respectively</li> </ul>
<i>Laboratory</i>	<ul style="list-style-type: none"> <li>➤ Mobile laboratory operational at the Mubende ETU with adequate test kits facilitating timely sample collection, testing and release of test results.</li> </ul>
<i>Case Management</i>	<ul style="list-style-type: none"> <li>➤ Summaries in the past 24 hours: Isolated 30 suspected cases (Mubende = 11, Madudu = 02, Mulago = 17), admitted 13 in the ETU (Mubende = 01, Entebbe = 12) and had one walk-in admission in Mubende.</li> <li>➤ A technical team visited and finalised the needs assessment for establishment of Bweyongedde Holding centre in Kassanda</li> <li>➤ Team in Mubende held a Pre-training preparation visit to Mityana hospital.</li> </ul>
<i>Emergency Medical Services</i>	<ul style="list-style-type: none"> <li>➤ EMS call centres attached to the alerts management system to improve coordination in Kassanda, KCCA and Mubende operational</li> <li>➤ A total of 33 evacuations done in Mubende, 52 in Kassanda, one in Kyegegwa.</li> </ul>
<i>Safe and Dignified Burials</i>	<ul style="list-style-type: none"> <li>➤ Conducted four safe and dignified burials in Mubende in the past 24 hours</li> <li>➤ Burial team in Bunyangabu is due for re-orientation</li> </ul>
<i>Infection Prevention and Control (IPC) and WASH</i>	<ul style="list-style-type: none"> <li>➤ Team in Kassanda disinfected homes of confirmed cases at Kalamba cell and Kalamba ward in Kiganda town council; Life link medical center, and home that contained a total number of 9 people.</li> </ul>
<i>Risk Communication</i>	<ul style="list-style-type: none"> <li>➤ On-going media activities in Mubende and Kassanda: radio talk shows, 15 radio spots continue to run daily, Community audio tower messages continue to run in 10 hotspot areas</li> <li>➤ One Radio talk show held at Kassanda FM</li> <li>➤ Oriented 58 VHT's (27 females and 31 males) on Risk Communication in Kazinga Town council of Kyegegwa</li> </ul>
<i>Social Mobilisation</i>	<ul style="list-style-type: none"> <li>➤ Conducted a general community awareness and sensitization drive in Manyogaseka Sub county of Kassanda covering villages of Kyansansuwa, Kawawa, Nabitoma, Buzawula A, Buzaawula B, Manyogaseka, Ndeeba and Kyojjomanyi</li> <li>➤ VHT's in Kyegegwa conducted House to House sensitization where 409 Households and 1979 individuals were reached</li> </ul>
<i>Community Engagement</i>	<ul style="list-style-type: none"> <li>➤ Team in Kassanda held a community dialogue with residents of Bweyongedde parish to reassure them of the planned holding centre</li> <li>➤ Conducted a community drive in Villages of Kakoni, Nkanja, Kyaburukuya, Kasikizi, Kyegeyuke, Kamuumi, Bukere, Bujubuli of Kyegegwa, where over 15,000 individuals were reached.</li> </ul>
<i>Logistics</i>	<ul style="list-style-type: none"> <li>➤ Continual quantification of needs and honouring requests for supplies from all affected districts.</li> <li>➤ Conducted tele-counselling of six individuals from families which had suspected cases of ebola in Bugogo Town council of Kyegegwa</li> </ul>
<i>Mental Health and Psychosocial Social Support</i>	<ul style="list-style-type: none"> <li>➤ Team in Mubende offered supportive counselling to five confirmed cases and six clients from the suspected wing; conducted a phone follow up to the families of the EVD confirmed cases admitted in Mubende ETU with a focus on child support</li> <li>➤ Team continually updates families of confirmed and suspects clients concerning status of their loved ones.</li> <li>➤ Prepared 15 clients from Mubende ETU for discharge, two clients from Madudu and eight discharged clients from the Mubende emergency ward were reunited with their families.</li> <li>➤ MHPSS team met with hospital staffs of Kikandwa health center where a discharged health worker is an employee, he was received by his in-charge.</li> </ul>

### Critical Challenges listed

- Burial teams in Bunyangabu are due for re-orientation.
- Insufficient supplies of IEC, stationery and IPC material for Ntungamo, Nakasongola, and Mityana. Requests made to the Logistics pillar
- Myths and misconceptions and low EVD risk perception still exist within some of the affected communities.
- Human resource challenges in light of increasing community-based evacuations and admissions as well as need to expand suspect case isolation

## Key messages to the public

- People in the community should call an alert hotline or go to a health facility if they have symptoms (e.g., fever, headache, weakness, vomiting, bloody diarrhoea or urine, bleeding from body openings).
- Current hotline numbers for Mubende are: **0800200043 (Toll-free), 0762640374, 0762640379, 0708062203, 0702869375, 0708052008, 0762659215 (Not toll-free)**. For Kampala Metropolitan Area: **0800 299000 (toll-free), 0756979282, 0782160174, 0780384997, 0771414202 (non-toll free)**. Bunyangabu: **0787437139**
- Free alert SMS on **6767** starting with the ‘ALERT’ key word; Free alert SMS to U-report on 8500
- Community should not fear people who have been discharged from the ETU and returned home.