



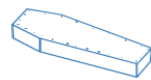



EBOLA VIRUS DISEASE

Republic of Uganda



Situation Report 36

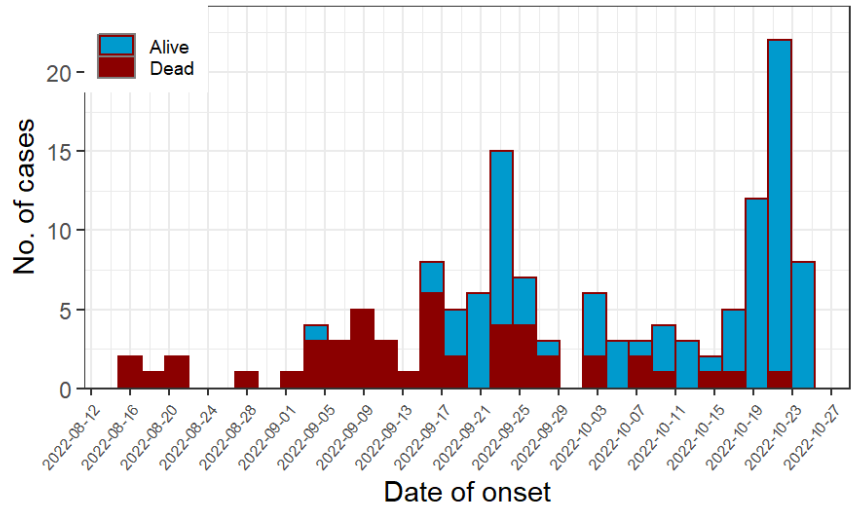
Data update as of 26th October 2022 at 22 :00 HRS

 <p>Districts with confirmed cases</p> <ul style="list-style-type: none"> • Mubende • Kassanda • Kyegegwa • Bunyangabu • Kagadi • <u>Wakiso</u> • Kampala 	 <p>Confirmed Cases</p> <p>New: 06 Total: 115</p>	 <p>Confirmed Deaths</p> <p>New: 01 Cumulative: 32</p>
 <p>Recoveries</p> <p>New: 01 Cumulative: 34</p>	 <p>Contacts</p> <p>Districts: 09 Active contacts: 1844 Follow-up Rate: 99%</p>	 <p>Healthcare Worker Infections</p> <p>New: 00 Dead: 04 Cumulative: 15</p>

Key Highlights

On 20th September 2022, the Ministry of Health declared an outbreak of Sudan ebolavirus (SVD) after a case managed at Mubende Regional Referral Hospital (MRRH) in Mubende district was confirmed through testing at the Uganda Virus Research Institute (UVRI). This followed investigations by the National Rapid Response Team of suspicious deaths that had occurred in the district earlier in the month. This is the first time in more than a decade that Uganda reports an outbreak of Sudan ebolavirus.

Distribution by Probable and Confirmed Children Cases by Status

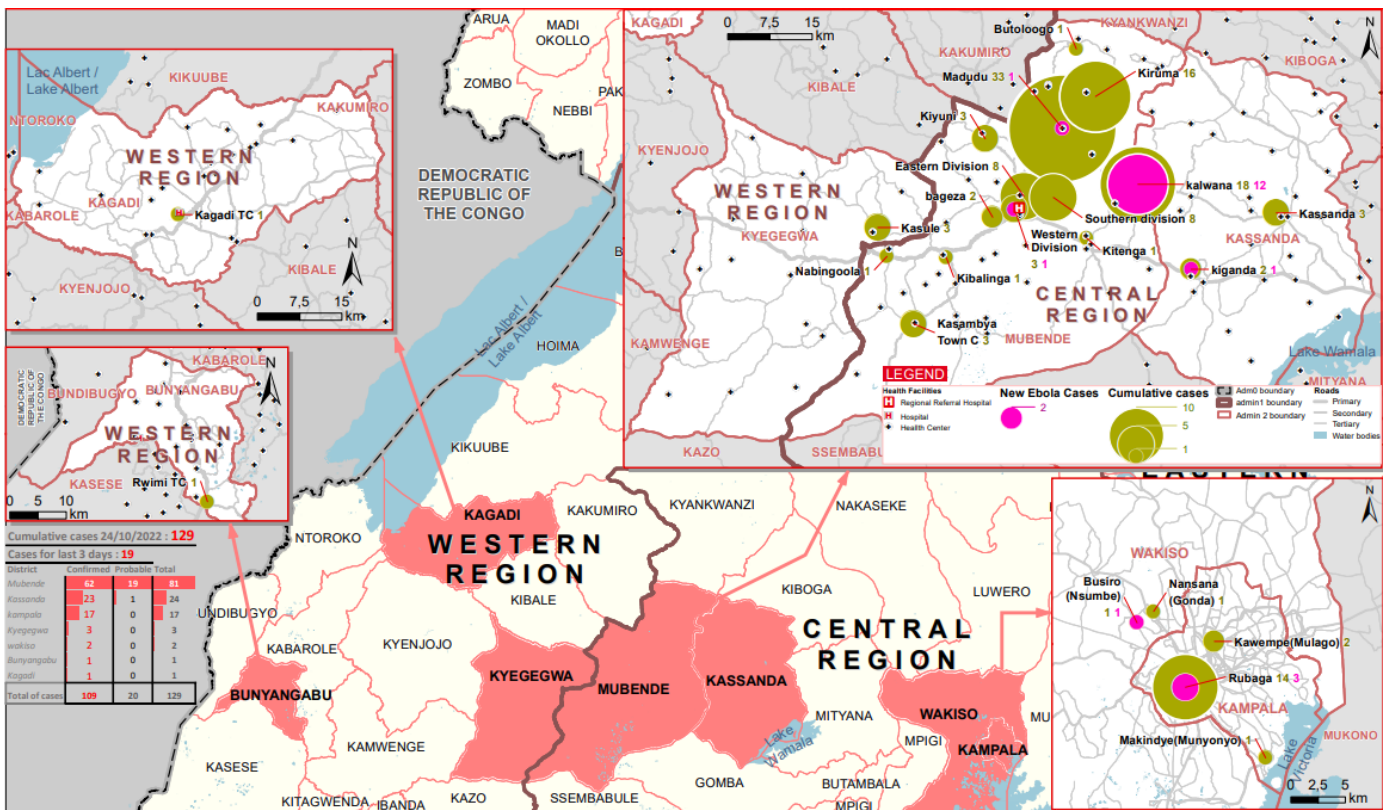


Bars: Stacked bars

Figure 1: Time analysis of affected persons by district

- Today marks 37 days of responding to the EVD outbreak, first case was confirmed on 19-Sep-2022.
- Six newly confirmed EVD cases (Female = 04) in the past 24 hours, all from Kassanda who are linked to known cases.
- One new confirmed death reported within the past 24 hours from Kampala – Entebbe isolation.
- Case Fatality Ratio (CFR) among confirmed cases is 32/115 (28%).
- A total of 1,844 contacts actively being followed-up in nine districts, follow-up rate in the past 24 hours was 99%

Figure 2: Place analysis of affected persons by district and sub-county



Summary of Cases updates by Sub-county as of 26th October 2022 at 22:00 HRS

<i>District</i> (N=7)	<i>Sub-County</i> (N=26)	<i>Confirmed Cases</i> (N=115)	<i>Confirmed Deaths</i> (N=32)	<i>Probable cases</i> (N=21)
<i>Bunyangabu</i>	Rwimi TC	01	00	00
	<i>Kagadi</i>	Kagadi TC	01	01
<i>Kampala</i>	Kawempe	02	00	00
	Makindye	01	00	00
	Rubaga	14	01	00
<i>Kassanda</i>	Gomba	01	00	00
	Kalwana	17	00	00
	Kassanda	05	00	02
	Kiganda	02	00	00
	Kikandwa	03	02	00
<i>Kyegegwa</i>	Kasule	03	01	00
	<i>Mubende</i>	Bagezza	02	02
<i>Wakiso</i>	Butologo	01	01	00
	Eastern Division	08	01	00
	Southern division	07	03	01
	Western Division	03	01	00
	Kasambya	05	01	00
	Kiruuma	10	04	05
	Kirwany	01	00	00
	Kiyuni	03	03	00
	Madudu	21	10	13
	Kibalinga	01	01	00
	Kitenga	01	00	00
	Busiro	01	00	00
	Nansana	01	00	00

Data harmonisation is an on-going process as patient classification changes between admissions, recoveries and fatalities.

**All probable deaths reported as occurring before 20th September 2022.*

Case Management summaries as of 26th October 2022 at 22:00 HRS

Updated 26Oct22 at 22:00 HRS		MUB	MAD	ENT	MUL	Total
Bed Capacity	# of beds in the Isolation Unit	30	08	-	120	158
	# of ETU beds	24	00	67	-	91
Bed Occupancy	# of beds occupied in the Isolation Unit today	15	08	-	31	54
	# of beds occupied in the ETU today	25	00	18	-	43
Admission	# of suspect cases admitted to the Isolation Unit today	00	08	00	01	09
	# of Cases admitted to the ETU today	09	00	01	-	10
	# of walk in patients to the isolation Unit	00	00	00	00	00
Severity	# of Mild cases in the ETU today	00	00	14	-	14
	# of Critical cases in the ETU today	25	00	02	-	27
Discharge	# of patients discharged from the ETU	00	00	00	-	00
	# of patients discharged from the Isolation Unit	10	06	00	00	16
Death	# of suspect cases that died in the Isolation Unit	00	00	00	00	00
	# of patients that died in the ETU	00	00	01	-	01

Table Acronyms: MUB = Mubende RRH ETU, MAD = Madudu HCIII, EBB = Entebbe RR Hospital, MUL = Mulago NR Hospital

Contact Tracing, Alert Management, EMS and SDB summaries as of 26th October 2022 at 22:00 HRS

Updated 25Oct22 at 22:00 hrs	Last 24 Hours									
	MUB	KAS	KAK	KMA	LUW	NAK	NTG	MTN	MTM	Total
Contacts listed	107	117	0	115	0	0	8	2	0	349
Contacts completed 21 days of follow-up	49	16	0	0	0	0	0	0	0	65
Contacts under active follow-up	1199	376	8	184	5	2	10	67	5	1,856
Contacts followed-up today (% follow-up rate)	1188 (99)	376 (100)	8 (100)	184 (100)	5 (100)	2 (100)	10 (100)	63 (94)	5 (100)	1844 (99)
Number of Contacts developing symptoms	1	5	0	1	0	0	0	0	0	7
Number of Contacts evacuated	1	4	0	1	0	0	0	0	0	6
Signals / Calls received	101	71	2	9	1	0	0	4	0	188
Alerts received	52	71	2	9	1	0	0	4	0	139
Alerts verified (%)	52 (100)	71 (100)	2 (100)	9 (100)	1 (100)	0	0	4 (100)	0	139 (100)
Alerts meeting suspect case definition	40	20	0	3	1	0	0	1	0	65
Alerts evacuated	28	6	0	3	1	0	0	0	0	38
SDB death alerts	17	0								17
SDB undertaken - Community burials	10	0								10
- Backlog cases today	7	0								7
- Samples collected from deaths	4	0								4
Samples collected	25	23	0	22	1	0	0	0	0	71
EMS Ambulance fleet	13	11								24
EMS alerts handled	43	51	0	1	1	0	0	0	0	96
EMS evacuations - ALL	39	45								84
- to ED	6	15								21
- to ETU	14	0								14
- to Madudu	2	7								9
- Pending	0	6								6
- declined	11	1								12
Triage Category - Red	9	2								11
- Yellow	9	6								15
- Green	13	36								49

	Cumulative													
	MUB	KYE	FPC	KAS	KAG	KAK	KMA	LUW	NAK	NTG	MTN	MTM	BUN	Total
Contacts listed	2168	58	3	491	23	75	194	5	8	20	67	6	48	3,166
Contacts completed 21 days of follow-up	926	77	3	53	23	58	0	0	6	0	0	0	48	1,194
SDB death alerts	105													105
SDB undertaken - Community burials	65			27										92
- Healthcare facility deaths	2													2

Table Acronyms: MUB=Mubende, KYE=Kyegegwa, FPC= Fort Portal City, KAS=Kassanda, KAG=Kagadi, KMA = Kampala Metropolitan (Kampala and Wakiso), BUN = Bunyangabu, KAK = Kakumiro, NAK = Nakasongola, LUW = Luweero, MTN = Mityana, MTM = Mitooma, NTG = Ntungamo

Actions to date

The Ministry of Health (MoH), Districts, and partners in Uganda are implementing several outbreak control interventions in Mubende and her surrounding districts to contain the disease spread. An overview of key activities is summarized below:

Response Pillar	Key Updates in the past 24 hours
Coordination	<ul style="list-style-type: none"> ➤ Daily DTF and IMT-specific meetings within all affected districts; NTF scheduled thrice a week. ➤ Police strategically deployed around the borders of Kassanda and Mubende to enforce presidential lockdown directives
Surveillance and Contact tracing	<ul style="list-style-type: none"> ➤ All listed contacts in Bunyangabu, Kagadi, Fort Portal City and Kyegegwa completed 21 days of follow-up. ➤ Since the last confirmed cases in Kyegegwa, Kagadi and Bunyangabu, no new cases have been reported from these districts for 35 days, 29 days and 27 days respectively ➤ Total contacts under follow up is 1,844 in nine districts. The follow up rate for contacts is at 99% ➤ A total of 139 alerts validated, 65 of which met the suspected case definition and 38 evacuated

	<ul style="list-style-type: none"> ➤ Received alerts from Butebo (01), Isingiro (02), Kakumiro (01), Kalungu (01), Kayunga (01), Kibuku (03), Kikuube (01), Kyankwanzi (01), Lira (02), Lwengo (01), Mpigi (01), Pakwach (01), Rakai (01). All these tested NEGATIVE for EVD (SUVD). ➤ Conducted EVD active case searching in 37 healthcare facilities of Kagadi; Kyaterekera T/C oriented 42 VHTs on EVD surveillance ➤ Oriented 70 VHTs and LC1s in Kiganda Town Council of Kassanda in contact follow up, active search, IPC and EBS. ➤ Reviewed and updated the surveillance strategy for Greater Kampala Metropolitan response ➤ Kampala team supported in line listing contacts in the affected schools and conducted an engagement
<i>Laboratory</i>	<ul style="list-style-type: none"> ➤ Mobile laboratory operational at the Mubende ETU with adequate test kits facilitating timely sample collection, testing and release of test results. ➤ Total of 98 samples processed at UVRI and Mubende mobile lab within the past 24 hours
<i>Case Management</i>	<ul style="list-style-type: none"> ➤ Ten new admissions within ETUs within the past 24 hours (Mubende = 09, Madudu = 00, Entebbe = 01). ➤ ETU Bed occupancy stands at 43 (Mubende = 25, Madudu = 0, Entebbe = 18). ➤ Currently setting up an isolation unit in Mubende to cater for the surge in cases; expected to be opened by the Hon. Minister tomorrow. ➤ Day #03 of the Case Management training targeting 45 HCWs from Mubende & Mityana districts.
<i>Emergency Medical Services</i>	<ul style="list-style-type: none"> ➤ EMS call centres in Kassanda, KCCA and Mubende operational alongside the Alert management system ➤ A total of 39 evacuations done in Mubende, 45 in Kassanda, one in Kampala.
<i>Safe and Dignified Burials</i>	<ul style="list-style-type: none"> ➤ Conducted 10 safe and dignified burials in Mubende and Kassanda within the past 24 hours ➤ Collected four laboratory samples from dead bodies. To address this gap a laboratory personnel has attached to each burial. Team and logistics availed to support mobility. ➤ Seven backlog cases in the past 24 hours because all available teams were fully engaged AND five alerts were received past 18:00 hrs.
<i>Infection Prevention and Control (IPC)</i>	<ul style="list-style-type: none"> ➤ Team Kagadi conducted IPC mentorship and active case search at Mabaale HCIII and at Doctors Medical Clinic –Muhorro ind which 8 and 11 members attended respectively. ➤ Mubende team met with the MRRH IPC team to discuss action points following the scorecard assessment; discussed the inpatient and healthcare worker exposure surveillance operationalisation at the RRH. ➤ Provided technical IPC support to the team setting up the 50 bed capacity suspect unit at MRRH mental ward. ➤ Revisited the mentors allocations with the district IPC WASH pillar head to ensure easy follow up of mentor activities. ➤ Supported for RING activation in Kassanda - multi partner support to Kassanda has been organised to cover the rings identified with health briefing, risk assessment and provision of IPC WASH supplies tomorrow.
<i>WASH</i>	<ul style="list-style-type: none"> ➤ Team in Kyegegwa was mentored on how to use the electronic IPC and WASH assesemnt tool; placed three hand washing facilities in different areas at the district offices. ➤ Team Mubende is engaged in discussions regarding the school WASH assessment tool and drafting next steps.
<i>Risk Communication</i>	<ul style="list-style-type: none"> ➤ Three mobile audio systems continued to mobilize communities in the South and East Divisions of Mubende Municipality; three MoH film vans mobilized in high risk sub-counties. ➤ A total of 15 radio spot messages were aired in five radio stations; ten community audio towers disseminated EVD messages in the 10 hotspot villages of Mubende. ➤ Sensitized food vendors and boda boda riders of Kassanda town council on EVD prevention strategies. ➤ EVD radio spots messages played on Kagadi FM radio, held one radio talk-show on paradigm radio on EVD prevention.
<i>Social Mobilisation</i>	<ul style="list-style-type: none"> ➤ Oriented 16 religious leaders in Kalwana town council of Kassanda - reaching 3 women, 13men. ➤ VHTs of Bugogo town council and Kasule Sub County of Kyegegwa conducted House to House sensitization on EVD, reaching 249 households. ➤ VHTs undertook house-house mobilization in eight (10) sub-counties of Butolooogo, Eastern division, Kasambya, Kibalinga, Kiruuma, Kitenga, Madudu, Nabingoola, Southern Division, Western Division of Mubende, where 485 households were reached.

	<ul style="list-style-type: none"> ➤ Team in Kassanda had a meeting with the local leaders of Kalwana sub county in preparation of tomorrow's community dialogue with the Hon. Minister and other dignitaries. ➤ Team orientated of 54 (27 males, 27 females) teachers, students, and Pupils 1,300 (640 females; 660 males) in six schools of Mubende on EVD, guiding on the importance of compliance with school EVD SoPs. ➤ Social mobilisation drives on EVD prevention strategies conducted at Muhorro BCS P/S, St. John P/S Muhorro, St. Magret girls SS Muhorro, St. Maria P/S and St. Adolf Tibeyarirwa SS of Kagadi, reaching 1,098 households with 5,841 people
<i>Community Engagement</i>	<ul style="list-style-type: none"> ➤ Team Kyegegwa conducted two community engagement meetings in Kyaka 2 Refugee Settlement ➤ Conducted one dialogue meeting with 17 (8 Females and 9 Males) members of the Saloon Operator's Association which was held at the Mayor's Gardens of Mubende. ➤ At least 288 community gatherings on EVD prevention have been held in Kagadi, in which 16,661 people attended
<i>Logistics</i>	<ul style="list-style-type: none"> ➤ Continual quantification and provision of logistical supplies as requested by response pillars.
<i>Mental Health and Psychosocial Social Support</i>	<ul style="list-style-type: none"> ➤ Team continually updates families of confirmed and suspects clients concerning status of their loved ones. ➤ Team Mubende offered supportive counselling to eight confirmed cases and six clients from the suspected wing. ➤ Prepared ten clients from Mubende ETU for discharge, six were reunited with their families, two supported for transfer to maternity and pediatric ward, two young boys don't remember directions to their homes. ➤ Team Mubende conducted one community engagement in Kasanje and Bulyana Kitonga, where EVD awareness was communicated.

Critical Challenges listed

- Myths and misconceptions and low EVD risk perception still exist within some of the affected communities.
- Human resource and IPC supplies challenges in light of increasing community-based evacuations and admissions as well as need to expand suspect case isolation

Key messages to the public

- People in the community should call an alert hotline or go to a health facility if they have symptoms (e.g., fever, headache, weakness, vomiting, bloody diarrhoea or urine, bleeding from body openings).
- Current hotline numbers for Mubende are: **0800200043 (Toll-free), 0762640374, 0762640379, 0708062203, 0702869375, 0708052008, 0762659215 (Not toll-free)**. For Kampala Metropolitan Area: **0800 299000 (toll-free), 0756979282, 0782160174, 0780384997, 0771414202 (non-toll free)**. Bunyangabu: **0787437139**
- Free alert SMS on **6767** starting with the 'ALERT' key word; Free alert SMS to U-report on 8500
- Community should not fear people who have been discharged from the ETU and returned home.

