





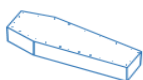



EBOLA VIRUS DISEASE

Republic of Uganda



Situation Report 37

Data update as of 27th October 2022 at 22 :00 HRS

| | | |
|---|---|---|
|  <p>Districts with confirmed cases</p> <ul style="list-style-type: none"> Mubende Kassanda Kyegegwa Bunyangabu Kagadi Wakiso Kampala |  <p>Confirmed Cases</p> <p>New: 06 Total: 121</p> |  <p>Confirmed Deaths</p> <p>New: 00 Cumulative: 32</p> |
|  <p>Recoveries</p> <p>New: 00 Cumulative: 35</p> |  <p>Contacts</p> <p>Districts: 09 Active contacts: 1922 Follow-up Rate: 91%</p> |  <p>Healthcare Worker Infections</p> <p>New: 00 Dead: 06 Cumulative: 15</p> |

Key Highlights

On 20th September 2022, the Ministry of Health declared an outbreak of Sudan ebolavirus (SVD) after a case managed at Mubende Regional Referral Hospital (MRRH) in Mubende district was confirmed through

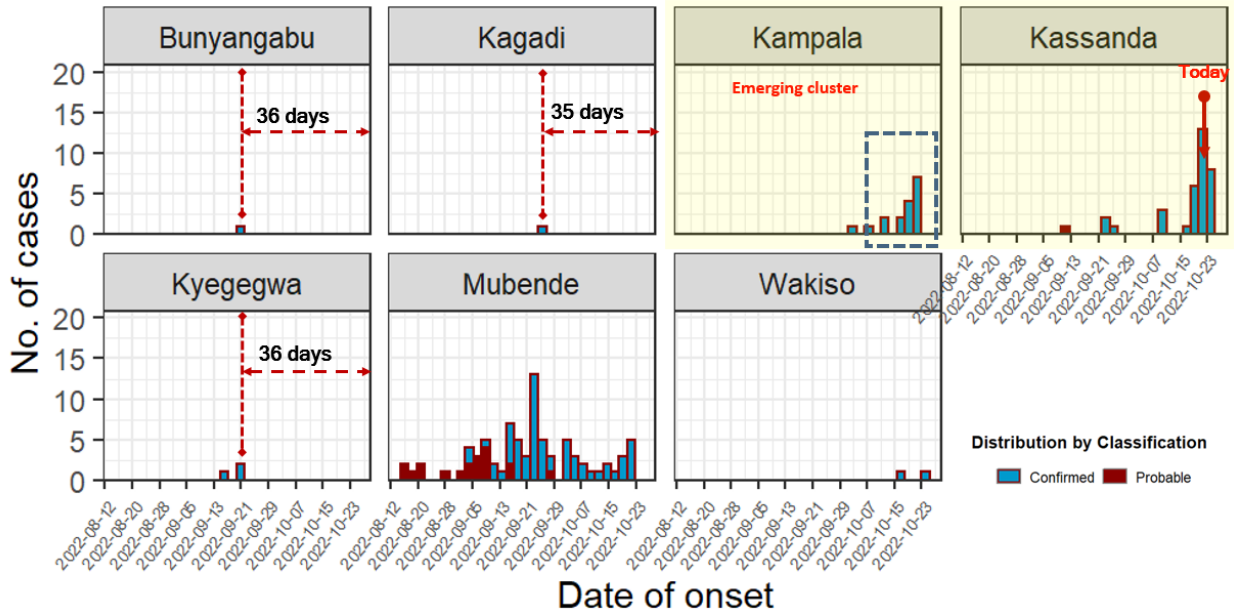
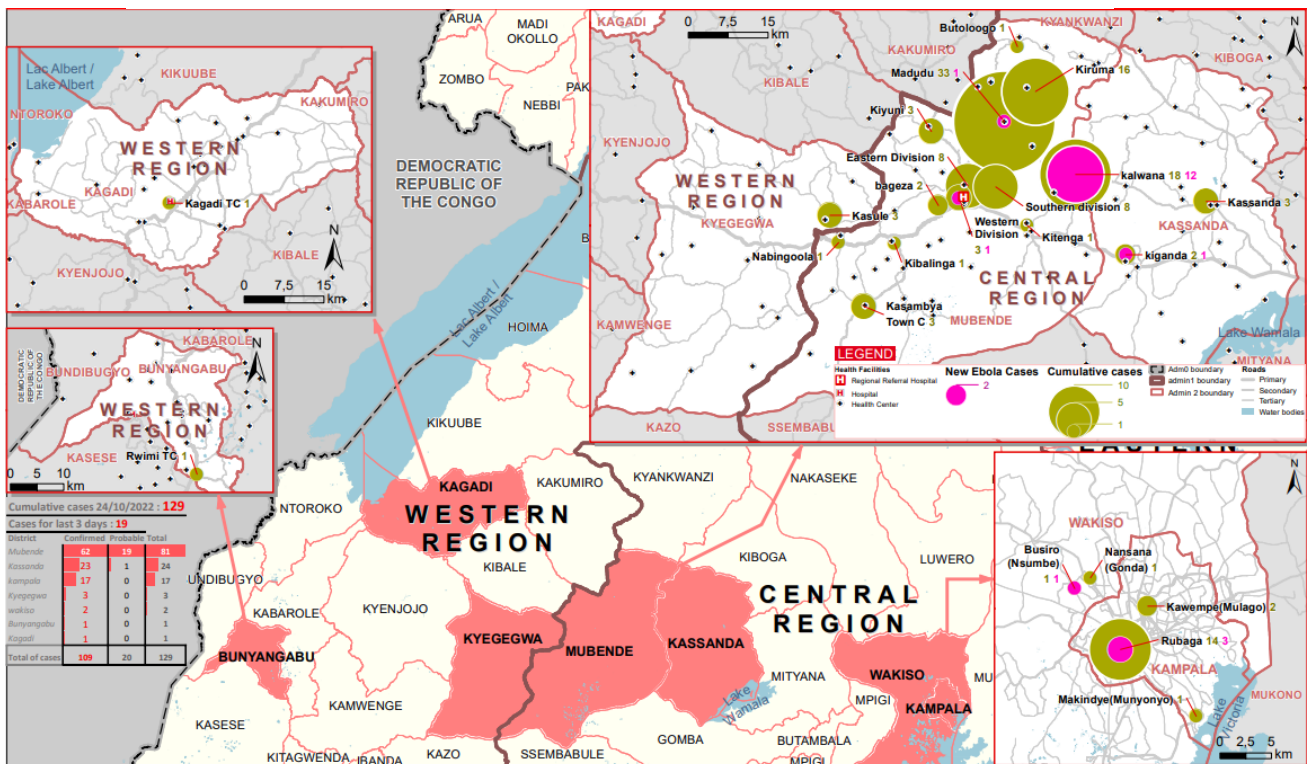


Figure 1: Time analysis of affected persons by district

testing at the Uganda Virus Research Institute (UVRI). This followed investigations by the National Rapid Response Team of suspicious deaths that had occurred in the district earlier in the month. This is the first time in more than a decade that Uganda reports an outbreak of Sudan ebolavirus.

- Today marks 38 days of responding to the EVD outbreak, first case was confirmed on 19-Sep-2022.
- Six newly confirmed EVD cases (Male = 05, age range: 04-34 years) in the past 24 hours, all from Kassanda who are linked to known cases.
- Zero new confirmed deaths reported within the past 24 hours.
- Case Fatality Ratio (CFR) among confirmed cases is 32/121 (26%).
- A total of 1,922 contacts actively being followed-up in nine districts, follow-up rate in the past 24 hours was 91%

Figure 2: Place analysis of affected persons by district and sub-county



Summary of Cases updates by Sub-county as of 27th October 2022 at 22:00 HRS

| <i>District</i> (N=7) | <i>Subcounty</i> (N=26) | <i>Confirmed cases</i> (N=121) | <i>Confirmed Deaths</i> (N=32) | <i>Probable Cases</i> (N=21) |
|--------------------------|----------------------------|-----------------------------------|-----------------------------------|---------------------------------|
| <i>Bunyangabu</i> | Rwimi TC | 01 | 00 | 00 |
| | <i>Kagadi</i> | Kagadi TC | 01 | 01 |
| <i>Kampala</i> | Kawempe | 02 | 00 | 00 |
| | Makindye | 01 | 00 | 00 |
| | Rubaga | 14 | 01 | 00 |
| | Gomba | 01 | 00 | 00 |
| | Kalwana | 20 | 00 | 00 |
| <i>Kassanda</i> | Kassanda | 05 | 00 | 02 |
| | Kiganda | 02 | 00 | 00 |
| | Kikandwa | 05 | 02 | 00 |
| <i>Kyegegwa</i> | Kasule | 03 | 01 | 00 |
| | Bagezza | 02 | 02 | 00 |
| | Butologo | 01 | 01 | 00 |
| | Eastern Division | 08 | 01 | 00 |
| <i>Mubende</i> | Southern division | 07 | 03 | 01 |
| | Western Division | 03 | 01 | 00 |
| | Kasambya | 05 | 01 | 00 |
| | Kiruuma | 10 | 04 | 05 |
| | Kirwany | 01 | 00 | 00 |
| | Kiyuni | 03 | 03 | 00 |
| | Madudu | 21 | 10 | 13 |
| | Kibalinga | 01 | 01 | 00 |
| | Kitenga | 01 | 00 | 00 |
| | <i>Wakiso</i> | Busiro | 01 | 00 |
| Nansana | | 01 | 00 | 00 |

Data harmonisation is an on-going process as patient classification changes between admissions, recoveries and fatalities.

*All probable deaths reported as occurring before 20th September 2022.

Case Management summaries as of 27th October 2022 at 22:00 HRS

| Updated 27Oct22 at 22:00 HRS | | MUB | MAD | ENT | MUL | Total |
|------------------------------|---|-----|-----|-----|-----|-------|
| Bed Capacity | # of beds in the Isolation Unit | 30 | 08 | - | 120 | 156 |
| | # of ETU beds | 24 | 02 | 67 | - | 93 |
| Bed Occupancy | # of beds occupied in the Isolation Unit today | 30 | | - | 31 | 61 |
| | # of beds occupied in the ETU today | 23 | | 18 | | 43 |
| Admission | # of suspect cases admitted to the Isolation Unit today | 06 | | 00 | 02 | 08 |
| | # of Cases admitted to the ETU today | 02 | | 00 | | 02 |
| | # of walk in patients to the isolation Unit | 00 | | 00 | 00 | 00 |
| Severity | # of Mild cases in the ETU today | 00 | | 16 | | 16 |
| | # of Critical cases in the ETU today | 23 | | 02 | | 25 |
| Discharge | # of patients discharged from the ETU | 04 | | 00 | | 04 |
| | # of patients discharged from the Isolation Unit | 02 | | 00 | 00 | 02 |
| Death | # of suspect cases that died in the Isolation Unit | 00 | | 00 | 00 | 00 |
| | # of patients that died in the ETU | 00 | | 00 | | 00 |

Table Acronyms: MUB = Mubende RRH ETU, MAD = Madudu HCIII, EBB = Entebbe RR Hospital, MUL = Mulago NR Hospital

Contact Tracing, Alert Management, EMS and SDB summaries as of 27th October 2022 at 22:00 HRS

| Updated 27Oct22 at 22:00 hrs | Last 24 Hours | | | | | | | | | | Total | | | |
|---|---------------|----------|---------|----------|---------|---------|----------|----------|---------|-----|-----------|-----|-----|-------|
| | MUB | KAS | KAK | KMA | LUW | NAK | NTG | MTN | MTM | | | | | |
| Contacts listed | 16 | 112 | 0 | 73 | 0 | 0 | 8 | 2 | 0 | | 211 | | | |
| Contacts completed 21 days of follow-up | 47 | 18 | 0 | 9 | 0 | 0 | 0 | 0 | 0 | | 74 | | | |
| Contacts under active follow-up | 1202 | 528 | 8 | 279 | 5 | 2 | 10 | 67 | 5 | | 2,106 | | | |
| Contacts followed-up today (% follow-up rate) | 1178 (98) | 487 (92) | 8 (100) | 160 (57) | 5 (100) | 2 (100) | 10 (100) | 67 (100) | 5 (100) | | 1922 (91) | | | |
| Number of Contacts developing symptoms | 1 | 13 | 0 | 0 | 0 | 0 | 0 | 1 | 0 | | 15 | | | |
| Number of Contacts evacuated | 1 | 9 | 0 | 0 | 0 | 0 | 0 | 0 | 0 | | 10 | | | |
| Signals / Calls received | 110 | 48 | 5 | 12 | 1 | 0 | 0 | 15 | 0 | | 191 | | | |
| Alerts received | 34 | 48 | 5 | 12 | 1 | 0 | 0 | 2 | 0 | | 102 | | | |
| Alerts verified (%) | 34 (100) | 48 (100) | 5 (100) | 12 (100) | 1 (100) | 0 | 0 | 2 (100) | 0 | | 102 (100) | | | |
| Alerts meeting suspect case definition | 28 | 25 | 0 | 7 | 1 | 0 | 0 | 2 | 0 | | 63 | | | |
| Alerts evacuated | 10 | 19 | 0 | 3 | 1 | 0 | 0 | 0 | 0 | | 33 | | | |
| SDB death alerts | 14 | 0 | | | | | | | | | 14 | | | |
| SDB undertaken - Community burials | 12 | 0 | | | | | | | | | 12 | | | |
| - Backlog cases today | 2 | 0 | | | | | | | | | 2 | | | |
| - Samples collected from deaths | 2 | 0 | | | | | | | | | 2 | | | |
| Samples collected | 32 | 22 | 6 | 17 | 2 | 1 | 5 | 0 | 0 | | 85 | | | |
| EMS Ambulance fleet | 13 | 11 | | | | | | | | | 24 | | | |
| EMS alerts handled | 29 | 47 | 0 | 3 | 0 | 0 | 0 | 0 | 0 | | 79 | | | |
| EMS evacuations - ALL | 22 | 37 | | | | | | | | | 59 | | | |
| - to ED | 4 | 13 | | | | | | | | | 17 | | | |
| - to ETU | 7 | 2 | | | | | | | | | 9 | | | |
| - to Madudu | 0 | 4 | | | | | | | | | 4 | | | |
| - Psychosocial, mental | 5 | 20 | | | | | | | | | 25 | | | |
| - declined | 7 | 3 | | | | | | | | | 10 | | | |
| Triage Category - Red | 4 | 2 | | | | | | | | | 6 | | | |
| - Yellow | 4 | 15 | | | | | | | | | 19 | | | |
| - Green | 8 | 26 | | | | | | | | | 34 | | | |
| | Cumulative | | | | | | | | | | | | | |
| | MUB | KYE | FPC | KAS | KAG | KAK | KMA | LUW | NAK | NTG | MTN | MTM | BUN | |
| Contacts listed | 2182 | 58 | 3 | 635 | 23 | 75 | 297 | 5 | 8 | 20 | 67 | 6 | 48 | 3,427 |
| Contacts completed 21 days of follow-up | 973 | 55 | 3 | 71 | 23 | 58 | 9 | 0 | 6 | 0 | 0 | 0 | 48 | 1,246 |
| SDB death alerts | 119 | | | | | | | | | | | | | |
| SDB undertaken - Community burials | 77 | | | 27 | | | | | | | | | | 104 |
| - Healthcare facility deaths | 2 | | | | | | | | | | | | | 2 |

Table Acronyms: MUB=Mubende, KYE=Kyegegwa, FPC= Fort Portal City, KAS=Kassanda, KAG=Kagadi, KMA = Kampala Metropolitan (Kampala and Wakiso), BUN = Bunyangabu, KAK = Kakumiro, NAK = Nakasongola, LUW = Luweero, MTN = Mityana, MTM = Mitooma, NTG = Ntungamo

Actions to date

The Ministry of Health (MoH), Districts, and partners in Uganda are implementing several outbreak control interventions in Mubende and her surrounding districts to contain the disease spread. An overview of key activities is summarized below:

Response Pillar

Key Updates in the past 24 hours

- | | |
|---|--|
| <i>Coordination</i> | <ul style="list-style-type: none"> ➤ Hon. Minister visited responders in Kassanda and Mubende - conducted a community dialogue and opened the expanded ETU in Mubende. ➤ Daily DTF and IMT-specific meetings within all affected districts; NTF scheduled thrice a week. ➤ Activated an additional 46 Village Task Forces for EVD prevention and response in Bunyangabu. |
| <i>Surveillance and Contact tracing</i> | <ul style="list-style-type: none"> ➤ Since the last confirmed cases in Kyegegwa, Kagadi and Bunyangabu, no new cases have been reported from these districts for 36 days, 30 days and 28 days respectively ➤ Total contacts under follow up within the past 24-hours are 1,922 within nine districts. Follow up rate for contacts is at 91% ➤ Total alerts validated within the past 24-hours were 102, of which 63 met the suspected case definition |

**Response
Pillar**

Key Updates in the past 24 hours

| | |
|--|---|
| <p><i>Laboratory</i></p> | <p>and 33 were evacuated.</p> <ul style="list-style-type: none"> ➤ Pillar is in the process of finalizing the health worker surveillance protocol; at least 110 contacts were followed-up from the three affected schools of Rubaga Division. ➤ Team in Kyegegwa visited four Health Facilities in Kyaka II Camp (Kakoni, Itambabiniga, Bukere & Bwiriza) and mentored eight healthcare workers on active search for suspected EVD cases ➤ Oriented 36 Health workers from Mityana hospital in EVD surveillance |
| <p><i>Case Management</i></p> | <ul style="list-style-type: none"> ➤ Mobile laboratory operational at the Mubende ETU with adequate test kits facilitating timely sample collection, testing and release of test results. ➤ Total of 151 samples processed at UVRI and Mubende mobile lab within the past 24 hours ➤ Alerts received from 33 category 3 districts: Arua (01), Bugweri (01), Bulambuli (01), Bulisa (02), Buvuma (01), Fort Portal (01), Gulu (03), Hoima (03), Ibanda (02), Jinja (01), Kakumiro (05), Kalungu (01), Kiboga (01), Kisoro (01), Kyegegwa (01), Kyenjojo (04), Lamwo (01), Luweero (02), Lwengo (01), Mbale (01), Mpigi (03), Mukono (04), Nakaseke (01), Nakasongola (01), Nebbi (01), Ntoroko (01), Ntungamo (05), Omoro (01), Rukiga (01), Serere (01), Soroti (01), Tororo (01), Kaberamaido (01). |
| <p><i>Emergency Medical Services</i></p> | <ul style="list-style-type: none"> ➤ Day #04 of the Case Management training targeting 45 HCWs from Mubende & Mityana districts. ➤ Held a discharge Ceremony for two survivors in Mubende ➤ Mubende ETU hosted the Hon Minister of Health who officially opened the new ETU ➤ Field Visit by case management coordinator to Kassanda with Hon. Minister of Health |
| <p><i>Safe and Dignified Burials</i></p> | <ul style="list-style-type: none"> ➤ EMS call centres in Kassanda, KCCA and Mubende operational ➤ A total of 22 evacuations done in Mubende, 37 in Kassanda, and one in Kampala. |
| <p><i>Infection Prevention and Control (IPC)</i></p> | <ul style="list-style-type: none"> ➤ Conducted 14 safe and dignified burials in Mubende and Kassanda within the past 24 hours ➤ . ➤ Two backlog cases in the past 24 hours: One contact was unreachable; one alert were received past 18:00 hrs. ➤ PPE items for all trained sub county burial teams prepositioned at the respective health facilities. |
| <p><i>WASH</i></p> | <ul style="list-style-type: none"> ➤ Team Mityana oriented staff from six healthcare facilities of Kyantungo, Kalangaro, Kiteredde, Kyamusisi, Kiyoganyi and Kareero in IPC ➤ Updated the Ring IPC to 28, cleaning and decontamination was conducted ➤ Cleaned and decontaminated three healthcare facilities in Mubende Municipality and Madudu sub county plus one household in Madudu ➤ Team KCCA Conducted IPC mentorship training for mentors from Mukono and Wakiso including IPC Division Heads and re-orientation on RING activities, requirements and supplies quantification. ➤ KCCA team trained mentors assessed IPC in their health facilities using the IPC EVD score card. Out of 106 facilities 48% scored above 80% while 14% scored less than 50% |
| <p><i>Risk Communication</i></p> | <ul style="list-style-type: none"> ➤ Multi partner support to Kassanda has been organised to cover the rings identified with health briefing, risk assessment and provision of IPC WASH supplies tomorrow ➤ KCCA WASH team also carried out sensitization on hand washing in arcades and shopping mall in the Central Business District. |
| <p><i>Social Mobilisation</i></p> | <ul style="list-style-type: none"> ➤ Held one radio talk at Britop Radio in Kyegegwa on EVD awareness, stigma reduction among the affected persons and families. ➤ Two radio talk shows conducted in Mubende focusing on safe and dignified burial (SDB) and Mental Health and psychosocial support (MHPSS) patients in ETU, preparation and integration of survivors in communities. ➤ EVD radio spots messages being played on Kagadi FM ➤ A total of 15 radio spot messages were aired in five radio stations; ten community audio towers disseminated EVD messages in the 10 hotspot villages of Mubende. |
| <p><i>Social Mobilisation</i></p> | <ul style="list-style-type: none"> ➤ VHTs in Bugogo T/C and Kasule S/County of Kyegegwa conducted house to house sensitization on EVD prevention, reaching 863 individuals. ➤ Social mobilisation drives conducted in nine schools of Bunyangabu reaching 4,173 students ➤ Team together with VHTs undertook house-house mobilization in the sub-counties of Butolooogo, Eastern division, Kasambya, Kibalinga, Kiruuma, Kitenga, Madudu, Nabingoola, Southern Division, |

| | |
|--|---|
| | <p>Western Division reaching 3,589 (1,834 males; 1,755 females) people with EVD messages through 544 households.</p> <ul style="list-style-type: none"> ➤ Three mobile audio systems continued to mobilize communities in the sub-counties of Bagezza, Nabingool and Kigando while 3 film vans mobilized communities in Kiyuni and Madudu sub-counties in Mubende. ➤ RCCE team in Mubende orientated 6 schools (and reached 51 (25males, 26 females) teachers, and 1,100 (300 female; 800 males) pupils on EVD. ➤ RCCE team in Mubende oriented 4 (1 female, 3 males) executive members of cultural institution of Buwekula County and 35 (10 females, 25 males) prison staff at Kaweere prisons on EVD ➤ KCCA team conducted one EVD sensitization meeting and trainings of LCI chairpersons from Banda, Kitawulizi and Nakawa division hall |
| <i>Community Engagement</i> | <ul style="list-style-type: none"> ➤ Continued to support the hotspot community engagement strategy with Village Task forces; on follow up visit to Kimwanyi village task force, in Kasanda town council as they engage households to put up hand washing facilities, pass hygiene messaging, look-out for Ebola cases, clarifying myth and misconceptions ➤ Engaged Kampala Capital City Traders' Association (KACITA) on risk communication activities by providing them with IEC materials and basic information for increased alert detection and reporting especially for malls, arcades, shop owners and areas of public congregation. ➤ Completed the TOT training for parish coordinators and LCII chairmen for Kawempe and Nakawa Divisions; completed the orientation for VHT's and LC I chairmen for Kawempe and Nakawa division |
| <i>Logistics</i> | <ul style="list-style-type: none"> ➤ Continual quantification and provision of logistical supplies as requested by response pillars. ➤ Team continually updates families of confirmed and suspects clients concerning status of their loved ones. ➤ Team Kyegegwa conducting a 2-day orientation of 12 members in home mental health and psychosocial support in the context of EVD. |
| <i>Mental Health and Psychosocial Social Support</i> | <ul style="list-style-type: none"> ➤ Team Mubende offered supportive counselling to six confirmed cases and ten clients from the suspected wing; one weak patient was helped to feed. ➤ Prepared seven clients from Mubende ETU for discharge, six were reunited with their families, ten from medical and pediatric ward escorted back home. ➤ Team Mubende conducted one community engagement at Kisoga, Kasanda where members were educated about EVD; carried out a community engagement in Kayebe |

Critical Challenges listed

- Myths and misconceptions and low EVD risk perception still exist within some of the affected communities.
- Human resource and IPC supplies challenges in light of increasing community-based evacuations and admissions as well as need to expand suspect case isolation

Key messages to the public

- People in the community should call an alert hotline or go to a health facility if they have symptoms (e.g., fever, headache, weakness, vomiting, bloody diarrhoea or urine, bleeding from body openings).
- Current hotline numbers for Mubende are: **0800200043 (Toll-free), 0762640374, 0762640379, 0708062203, 0702869375, 0708052008, 0762659215 (Not toll-free)**. For Kampala Metropolitan Area: **0800 299000 (toll-free), 0756979282, 0782160174, 0780384997, 0771414202 (non-toll free)**. Bunyangabu: **0787437139**
- Free alert SMS on **6767** starting with the 'ALERT' key word; Free alert SMS to U-report on 8500
- Community should not fear people who have been discharged from the ETU and returned home.