

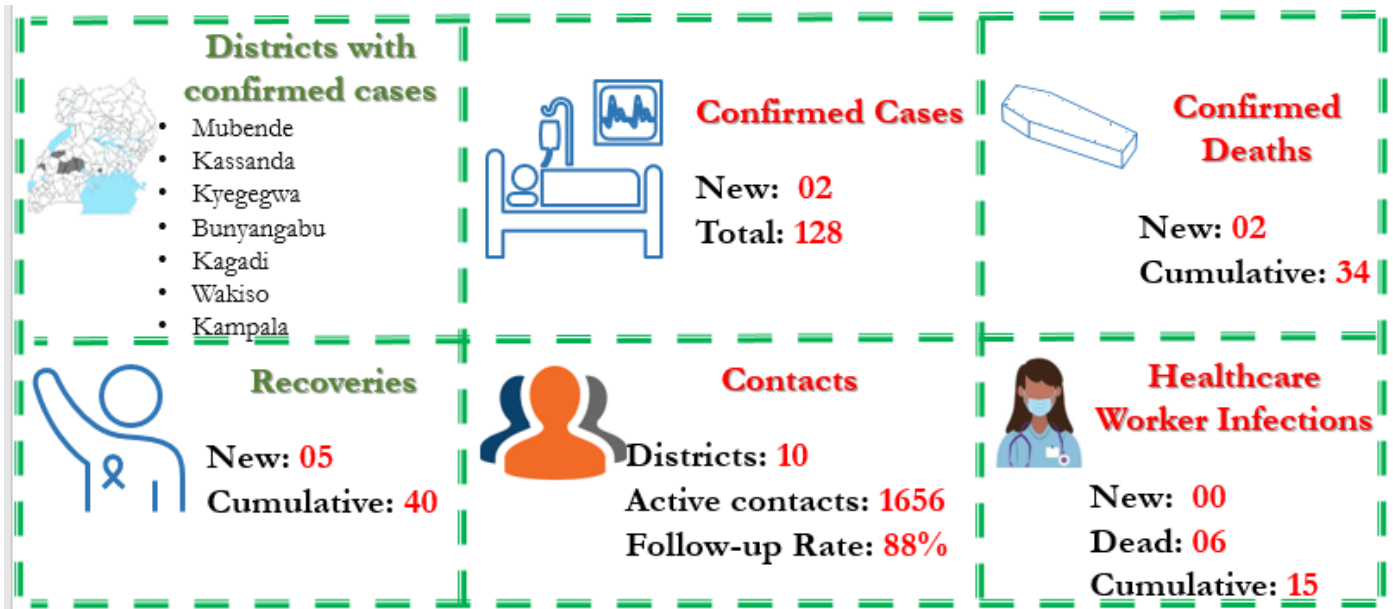
# EBOLA VIRUS DISEASE

Republic of Uganda



## Situation Report 38

Data update as of 29<sup>th</sup> October 2022 at 22 :00 HRS



## Key Highlights

On 20<sup>th</sup> September 2022, the Ministry of Health declared an outbreak of Sudan ebolavirus (SVD) after a case managed at Mubende Regional Referral Hospital (MRRH) in Mubende district was confirmed through testing at the Uganda Virus Research Institute (UVRI). This

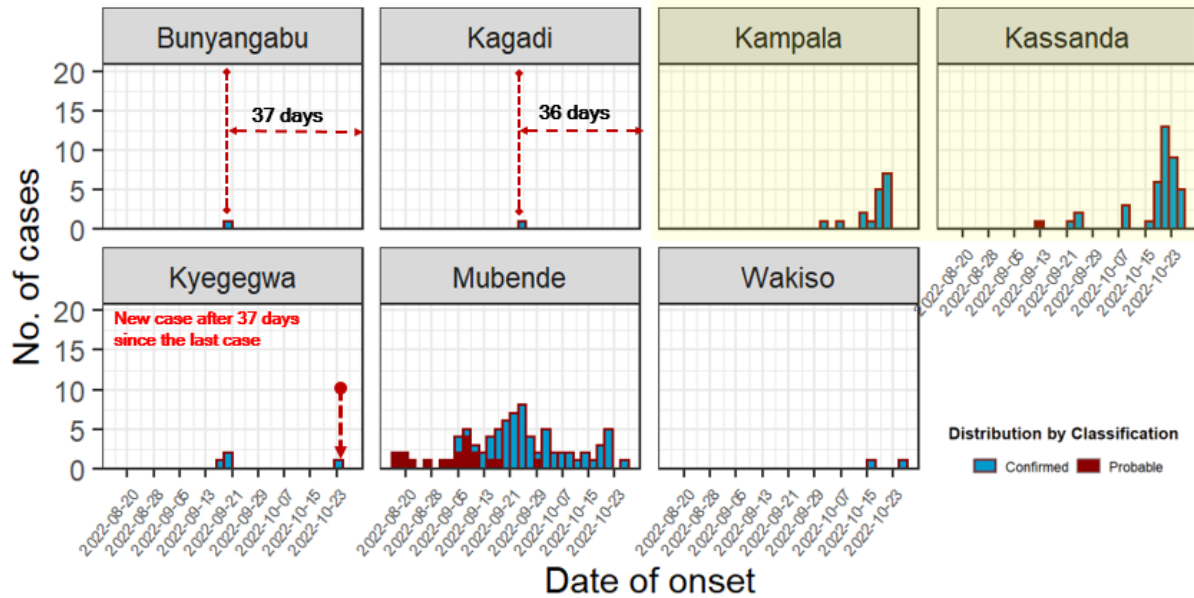
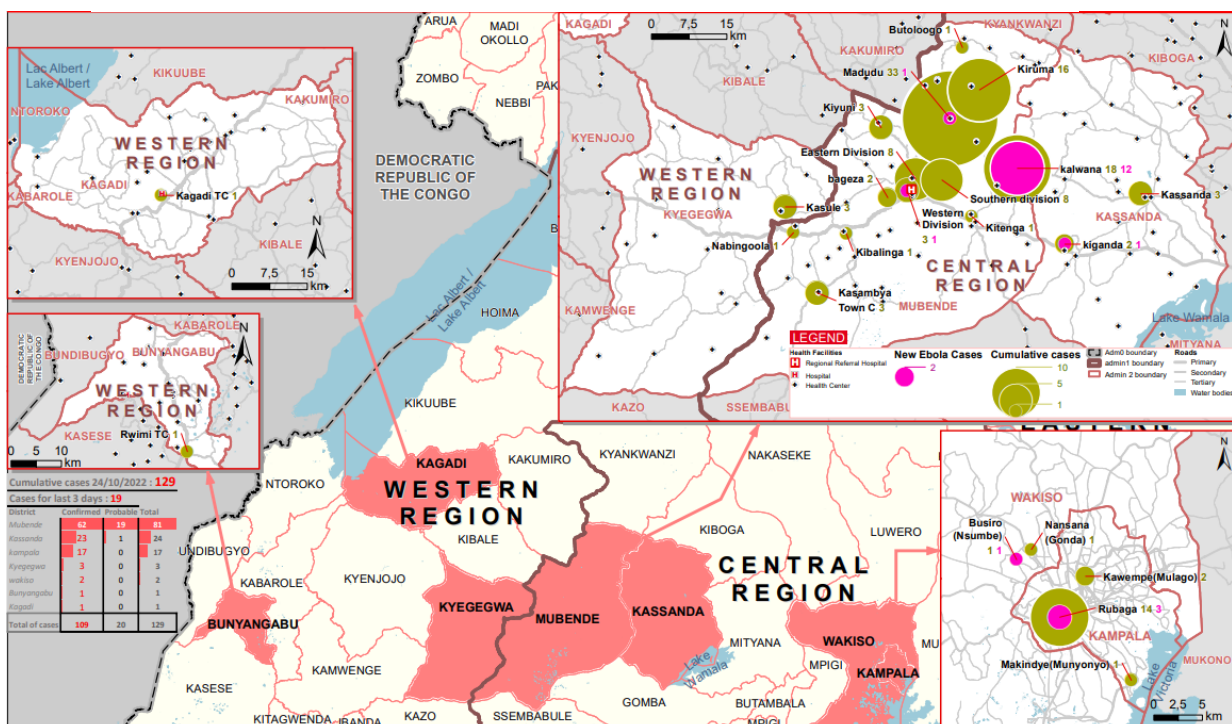


Figure 1: Time analysis of affected persons by district followed investigations by the National Rapid Response Team of suspicious deaths that had occurred in the district earlier in the month. This is the first time in more than a decade that Uganda reports an outbreak of Sudan ebolavirus.

- Today marks 40 days of responding to the EVD outbreak, first case was confirmed on 19-Sep-2022.
- Two newly confirmed EVD cases (Both female, 43yrs) in the past 24 hours, both from Kassanda who are linked to known cases.
- Two new confirmed deaths reported within the past 24 hours, both from Kassanda.
- Five new recoveries – four from Entebbe, one from Mubende, in the past 24 hours, bringing the cumulative recoveries to 40.
- Case Fatality Ratio (CFR) among confirmed cases is 34/128 (27%).
- A total of 1,656 contacts actively being followed-up in ten districts, follow-up rate in the past 24 hours was 88%

Figure 2: Place analysis of affected persons by district and sub-county



## Summary of Cases updates by district as of 29<sup>th</sup> October 2022 at 22:00 HRS

	Last 24 Hours								Cumulative							
	MUB	KYE	KAS	KAG	WAK	KLA	BUN	Total	MUB	KYE	KAS	KAG	WAK	KLA	BUN	Total
Confirmed Cases	00	00	02	00	00	00	00	02	65	04	38	01	02	17	01	128
Deaths																
Confirmed	00	00	02	00	00	00	00	02	29	01	02	01	00	01	00	34
Probable	-	-	-	-	-	-	-	-	19	00	02	00	00	00	00	21
Confirmed HCW																
Cases	00	00	00	00	00	00	00	00	11	00	00	01	00	02	01	15
Deaths	00	00	00	00	00	00	00	00	04	00	01	01	00	00	00	06

**Table Acronyms:** MUB=Mubende, KYE=Kyegegwa, KAS=Kassanda, KAG=Kagadi, WAK = Wakiso, KLA = Kampala, BUN=Bunyangabu, HCW=Healthcare Worker

## Summary of Cases updates by Sub-county as of 29<sup>th</sup> October 2022 at 22:00 HRS

<i>District</i> (N=7)	<i>Subcounty</i> (N=26)	<i>Confirmed cases</i> (N=128)	<i>Confirmed deaths</i> (N=34)	<i>Probable cases</i> (N=21)
<i>Bunyangabu</i>	Rwimi TC	01	00	00
	<i>Kagadi</i>			
	Kagadi TC	01	01	00
<i>Kampala</i>	Kawempe	02	00	00
	Makindye	01	00	00
	Rubaga	14	01	00
	Gomba	01	01	00
	Kalwana	24	01	00
	<i>Kassanda</i>			
<i>Kassanda</i>	Kassanda	05	00	02
	Kiganda	03	00	00
<i>Kyegegwa</i>	Kikandwa	05	02	00
	Kasule	04	01	00
	Bagezza	02	02	00
	Butologo	01	01	00
	Eastern Division	09	01	00
	Southern division	07	03	01
	Western Division	03	01	00
<i>Mubende</i>	Kasambya	05	01	00
	Kiruuma	10	04	05
	Kirwanyi	02	00	00
	Kiyuni	03	03	00
	Madudu	21	10	13
	Kibalinga	01	01	00
	Kitenga	01	00	00
	<i>Wakiso</i>			
Busiro	01	00	00	
Nansana	01	00	00	

Data harmonisation is an on-going process as patient classification changes between admissions, recoveries and fatalities.

\*All probable deaths reported as occurring before 20<sup>th</sup> September 2022.

## Contact Tracing, Alert Management, EMS and SDB summaries as of 29<sup>th</sup> October 2022 at 22:00 HRS

Updated 29Oct22 at 22:00 hrs	Last 24 Hours										Total			
	MUB	KAS	KAK	KYE	KMA	LUW	NAK	NTG	MTN	MTM				
Contacts listed	4	38	0	0	47	0	0	0	3	0	92			
Contacts completed 21 days of follow-up	60	25	0	0	19	0	0	10	0	0	114			
Contacts under active follow-up	806	577	8	11	399	0	2	0	68	6	1,877			
Contacts followed-up today (% follow-up rate)	778 (97)	577 (100)	8 (100)	11 (100)	206 (52)	0	2 (100)	0	68 (96)	6 (100)	1656 (88)			
Number of Contacts developing symptoms	0	6	0	0	0	0	0	0	1	0	7			
Number of Contacts evacuated	0	1	0	0	0	0	0	0	1	0	2			
Signals / Calls received	77	62	0	3	20	1	0	0	8	0	171			
Alerts received	19	62	0	3	20	1	0	0	2	0	107			
Alerts verified (%)	19 (100)	62 (100)	0	3 (100)	20 (100)	1 (100)	0	0	2 (100)	0	107 (100)			
Alerts meeting suspect case definition	15	20	0	0	19	1	0	0	1	0	56			
Alerts evacuated	9	17	0	0	5	0	0	0	0	0	31			
SDB death alerts	5										5			
SDB undertaken - Community burials	4										4			
- Backlog cases today	1										1			
- Samples collected from deaths	4										4			
Samples collected	26	27	0	1	11	1	1	0	4	0	71			
EMS Ambulance fleet	13	11									24			
EMS alerts handled	23	43			5						71			
EMS evacuations - ALL	21	35									56			
- to ED	10	2									12			
- to ETU	0	0									0			
- to Madudu	0	4									4			
- Psychosocial, mental	0	4									4			
- declined	2	2									4			
Triage Category - Red	5	7									12			
- Yellow	5	13									18			
- Green	7	15									22			
	Cumulative													
	MUB	KAS	FPC	KYE	KAG	KAK	KMA	LUW	NAK	NTG	MTN	MTM	BUN	
Contacts listed	2183	705	3	69	23	75	427	5	8	20	67	7	48	3,640
Contacts completed 21 days of follow-up	1201	80	3	55	23	58	28	5	6	20	3	0	48	1,530
SDB death alerts	132													
SDB undertaken - Community burials	88													88
- Healthcare facility deaths	2													2

**Table Acronyms:** MUB=Mubende, KYE=Kyegegwa, FPC= Fort Portal City, KAS=Kassanda, KAG=Kagadi, KMA = Kampala Metropolitan (Kampala and Wakiso), BUN = Bunyangabu, KAK = Kakumiro, NAK = Nakasongola, LUW = Luweero, MTN = Mityana, MTM = Mitooma, NTG = Ntungamo

### Actions to date

The Ministry of Health (MoH), Districts, and partners in Uganda are implementing several outbreak control interventions in Mubende and her surrounding districts to contain the disease spread. An overview of key activities is summarized below:

#### Response Pillar

#### Key Updates in the past 24 hours

Coordination	➤ Hon. Minister and MoH top leadership held coordination meeting with KCCA health officials, political leadership and partners to gather support for EVD response in the kampala metropolitan area.
	➤ Daily DTF and IMT-specific meetings within all affected districts; NTF scheduled thrice a week.
	➤ Total contacts under follow up within the past 24-hours are 1877 within ten districts. Follow up rate for contacts is at 88%
Surveillance and Contact tracing	➤ Total alerts validated within the past 24-hours were 107 in category 1 and 2 districts, of which 56 met the suspected case definition and 31 were evacuated.
	➤ Team Kassanda trained six facilitators on EVD reporting guidelines and active case search. Team will cascade to facility focal persons in both public and private healthcare facilities

**Response Pillar**

**Key Updates in the past 24 hours**

	<ul style="list-style-type: none"> <li>➤ Total of 27 alerts received from 16 Category 3 district: Adjumani (01), Agago (01), Amuru (01), Bukomansimbi (01), Buliisa (01), Gulu (01), Hoima (01), Ibanda (03), Kitgum (01), Kyankwanzi (01), Kyenjojo (05), Luweero (01), Mityana (04), Nakasongola (01), Omoro (02), Pader (01), Rukungiri (01). All tested NEGATIVE for EVD (SUD).</li> </ul>
<i>Laboratory</i>	<ul style="list-style-type: none"> <li>➤ Strengthened coordination between lab, surveillance and EMS for timely sample collection and filling of CIFs</li> <li>➤ Timely sample collection upon receipt of filled CIFs, timely sample testing and release of test results, adequate test kit at testing laboratories</li> <li>➤ Total of 96 samples processed at UVRI and Mubende mobile lab within the past 24 hours</li> </ul>
<i>Case Management</i>	<ul style="list-style-type: none"> <li>➤ Reviewed operational gaps at new isolation unit in Mubende including additional staff deployment, medical supplies stock up and opening up of the "Happy shower" area.</li> <li>➤ Followed up on the Healthcare workers under institutional quarantine in Mubende</li> </ul>
<i>Emergency Medical Services</i>	<ul style="list-style-type: none"> <li>➤ A total of 21 evacuations done in Mubende and 35 in Kassanda.</li> <li>➤ Team discussed plan on getting all suspects tested on arrival with aim of delayed phlebotomy in light of increasing evacuations</li> <li>➤ Mental unit in Mubende is full, currently using ED</li> </ul>
<i>Safe and Dignified Burials</i>	<ul style="list-style-type: none"> <li>➤ Conducted four safe and dignified burials in Mubende and Kassanda within the past 24 hours and collected four samples.</li> <li>➤ One backlog case in the past 24 hours - alert were received past 18:00 hrs.</li> <li>➤ Finalized training of burial teams for Mubende municipal divisions</li> </ul>
<i>WASH and Infection Prevention and Control (IPC)</i>	<ul style="list-style-type: none"> <li>➤ IPC TWG developed IPC rings for Kassanda, Mityana and Kyegegwa Districts and shared with the responsible stakeholders responding to IPC; harmonized the IPC tool kit and developed a distribution list for the 70 private facilities, last mile distribution for 40 public health facilities in Mubende district.</li> <li>➤ Orientation of Mubende RRH staff on EVD inpatient surveillance and Healthcare worker exposure management; conducted a walk through assessment with hospital leadership and IPC team to validate the action points discussed in the performance review meeting.</li> <li>➤ Orientation training of eleven IPC district mentors in Kassanda on the IPC ring approach</li> </ul>
<i>Risk Communication</i>	<ul style="list-style-type: none"> <li>➤ Three mobile audio systems mobilized communities of Kitenga, Kyenda Town councils &amp; Kalonga in Buwekula constituency in Mubende.</li> <li>➤ Conducted one radio talk show at Brightop radio of Kyegegwa</li> <li>➤ Total of 15 radio spots/messages continue to be aired through five radio stations while ten community audio towers are disseminating EVD messages in the ten hotspots in Mubende.</li> <li>➤ EVD radio spots messages played on Kagadi FM radio, One talk-show held on Paradigm radio</li> </ul>
<i>Social Mobilisation</i>	<ul style="list-style-type: none"> <li>➤ Mubende community volunteers &amp; VHTs reached 4,363 (2,204 males; 2,159 females) people with EVD messages through 610 households in ten (10) sub-counties of Butoloogo, Eastern division, Kasambya, Kibalinga, Kiruuma, Kitenga, Madudu, Nabingoola, Southern Division, Western Division.</li> <li>➤ EVD awareness engagements within Kalwana sub county of Kassanda within the villages of Kanseera, Kikandwa, Nkasozi, Trinity model school, Ddalamba, Mayirikiti, Kafene, Kyetume, Kitongo, Makaiizo, Busula and Kabaati</li> <li>➤ VHTs in Bugogo T/C and Kasule S/County of Kyegegwa conducted house to house sensitization on EVD Prevention; mapped out schools, traditional healers and religious leaders in Kibuba parish</li> <li>➤ RCCE team engaged staff of 5 drug shops and 9 restaurants in Mubende municipality and oriented 30 (6 males, 24 females) staff and their clients. 30 IEC materials were distributed.</li> </ul>
<i>Community Engagement</i>	<ul style="list-style-type: none"> <li>➤ Team Kyegegwa conducted a community dialogue within the community of the newly EVD confirmed case and stressed the importance of contact identification and isolation</li> <li>➤ Three community engagements held in Bunyangabu schools, reaching cumulatively, 4173 pupils with EVD messages</li> <li>➤ RCCE team in Mubende orientated 3 schools (Jesus cares, Happy Land SS and St. James SS) and reached 22 (16 males, 6 females) teachers, and 330 (173 females, 157 males) pupils with EVD prevention messages and disseminated 270 IEC materials</li> <li>➤ In addition, RCCE team orientated 2 schools (St Johns &amp; Kiyonga bright grammar primary schools) in Kigando sub-county in Mubende) and reached 15 (9 males, 6 females) teachers, and 531 (305 males, 226 females) pupils with EVD prevention messages and disseminated 40 IEC materials.</li> </ul>

*Mental Health and Psychosocial Social Support*

- Team continually updates families of confirmed and suspects clients concerning status of their loved ones.
- Counsellor the father of the newly EVD confirmed case in Kyegegwa and stressed importance of cooperation with the health workers
- In Mubende, 12 confirmed cases and six clients from suspect wing were offered supportive counselling; psychosocial support offered to ETU staff
- One survivor was reunited with his community; three clients from suspects ward prepared for discharge and resettled back home; 14 discharged clients from emergency ward were prepared for discharge and reunited with their families; five discharged clients from ETU annex were escorted back home; four discharged clients from medical ward were escorted back home.
- MHPSS team conducted a community engagement at Kalwana, Kasanda where members were oriented about EVD prevention; team also conducted seven visits at the homes of EVD survivors, a wife to one the survivors complains about protected sex.

**Critical Challenges listed**

- Myths and misconceptions and low EVD risk perception still exist within some of the affected communities.
- Human resource and IPC supplies challenges in light of increasing community-based evacuations and admissions as well as need to expand suspect case isolation

**Key messages to the public**

- People in the community should call an alert hotline or go to a health facility if they have symptoms (e.g., fever, headache, weakness, vomiting, bloody diarrhoea or urine, bleeding from body openings).
- Current hotline numbers for Mubende are: **0800200043 (Toll-free), 0762640374, 0762640379, 0708062203, 0702869375, 0708052008, 0762659215 (Not toll-free)**. For Kampala Metropolitan Area: **0800 299000 (toll-free), 0756979282, 0782160174, 0780384997, 0771414202 (non-toll free)**. Bunyangabu: **0787437139**
- Free alert SMS on **6767** starting with the ‘ALERT’ key word; Free alert SMS to U-report on 8500
- Community should not fear people who have been discharged from the ETU and returned home.