

EBOLA VIRUS DISEASE

Republic of Uganda



Situation Report 39

Data update as of 30th October 2022 at 22 :00 HRS

Districts with confirmed cases

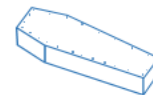


- Mubende
- Kassanda
- Kyegegwa
- Bunyangabu
- Kagadi
- Wakiso
- Kampala



Confirmed Cases

New: **01**
Total: **129**



Confirmed Deaths

New: **03**
Cumulative: **37**



Recoveries

New: **00**
Cumulative: **43**



Contacts

Districts: **08**
Active contacts: **1,540**
Follow-up Rate: **83%**



Healthcare Worker Infections

New: **00**
Dead: **07**
Cumulative: **18**

Key Highlights

On 20th September 2022, the Ministry of Health declared an outbreak of Sudan ebolavirus (SVD) after a case managed at Mubende Regional Referral Hospital (MRRH) in Mubende district was confirmed through testing at the Uganda Virus Research Institute (UVRI). This followed investigations by the National Rapid Response Team of suspicious deaths that had occurred in the district earlier in the month. This is the first time in more than a decade that Uganda reports an outbreak of Sudan ebolavirus.

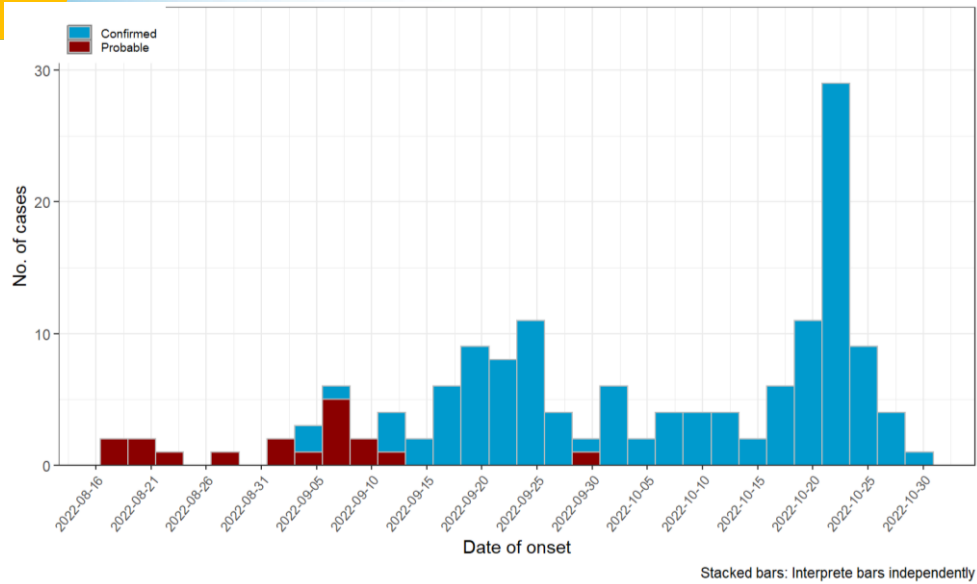
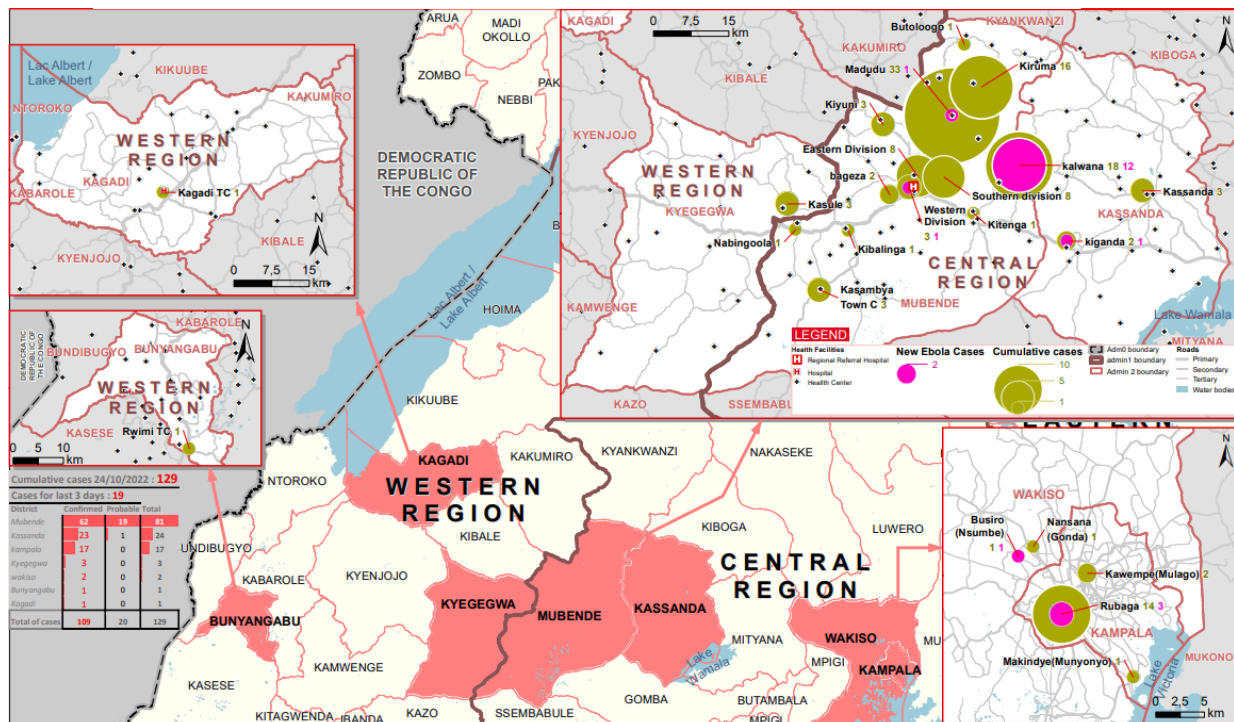


Figure 1: Time analysis of affected persons by district

- Today marks 41 days of response to the EVD outbreak, first case was confirmed on 19-Sep-2022.
- One newly confirmed EVD case (Female, 09yrs) in the past 24 hours from Kassanda who is linked to a known case.
- Three confirmed deaths reported, following a data reconciliation exercise with the case management pillar.
- Following the same reconciliation exercise, cumulative recoveries stand at 43, and healthcare worker infections are 18.
- Case Fatality Ratio (CFR) among confirmed cases is 37/129 (29%).
- A total of 1,540 contacts actively being followed-up in ten districts, follow-up rate in the past 24 hours was 83%

Figure 2: Place analysis of affected persons by district and sub-county



Summary of Cases updates by district as of 30th October 2022 at 22:00 HRS

	Last 24 Hours								Cumulative							
	MUB	KYE	KAS	KAG	WAK	KLA	BUN	Total	MUB	KYE	KAS	KAG	WAK	KLA	BUN	Total
Confirmed Cases	00	00	01	00	00	00	00	01	65	04	39	01	02	17	01	129
Deaths																
Confirmed	03	00	00	00	00	00	00	03	28	01	06	01	00	01	00	37
Probable	-	-	-	-	-	-	-	-	19	00	02	00	00	00	00	21
Recoveries	00	00	00	00	00	00	00	00	32	02	04	00	00	04	01	43
Confirmed HCW																
Cases	00	00	00	00	00	00	00	00	12	00	02	01	00	02	01	18
Deaths	00	00	00	00	00	00	00	00	05	00	01	01	00	00	00	07

Table Acronyms: MUB=Mubende, KYE=Kyegegwa, KAS=Kassanda, KAG=Kagadi, WAK = Wakiso, KLA = Kampala, BUN=Bunyangabu, HCW=Healthcare Worker

Contact Tracing, Alert Management, EMS and SDB summaries as of 30th October 2022 at 22:00 HRS

Updated 30Oct22 at 22:00 hrs	Last 24 Hours													
	MUB	KAS	KAK	KYE	KMA	NAK	MTN	MTM	Total					
Contacts listed	0	29	0	2	2	0	3	10	46					
Contacts completed 21 days of follow-up	247	18	0	0	0	0	0	0	265					
Contacts under active follow-up	739	609	8	13	401	2	71	16	1,859					
Contacts followed-up today (% follow-up rate)	720 (97)	502 (82) (100)	8 (100)	13 (100)	208 (52) (100)	2 (100)	71 (100)	16 (100)	1540 (83)					
Number of Contacts developing symptoms	2	2	0	0	0	0	0	0	4					
Number of Contacts evacuated	1	1	0	0	0	0	0	0	2					
Signals / Calls received	85	56	0	2	7	0	8	0	158					
Alerts received	24	56	0	2	7	0	2	0	91					
Alerts verified (%)	24 (100)	56 (100)	0	2 (100)	7 (100)	0	2 (100)	0	91 (100)					
Alerts meeting suspect case definition	14	12	0	0	1	0	0	0	27					
Alerts evacuated	12	9	0	0	1	0	0	0	22					
SDB death alerts	9								9					
SDB undertaken - Community burials	2								2					
- Backlog cases today	7								7					
- Samples collected from deaths	1								1					
Samples collected	37	11	0	1	6	0	0	2	57					
EMS Ambulance fleet	13	11							24					
EMS alerts handled	18	30			2				50					
EMS evacuations - ALL	13	26			2				41					
- to ED	5	11							16					
- to ETU	0	5							5					
- to Madudu	0	0							0					
- Psychosocial, mental	2	4							6					
- declined	5	0							5					
Triage Category - Red	5	3							8					
- Yellow	1	12							13					
- Green	3	11							14					
	Cumulative													
	MUB	KAS	FPC	KYE	KAG	KAK	KMA	LUW	NAK	NTG	MTN	MTM	BUN	
Contacts listed	2183	734	3	71	23	75	429	5	8	20	71	15	48	3,685
Contacts completed 21 days of follow-up	1448	98	3	55	23	58	28	5	6	20	3	0	48	1,795
SDB death alerts	141													90
SDB undertaken - Community burials	90													90
- Healthcare facility deaths	46													46

Table Acronyms: MUB=Mubende, KYE=Kyegegwa, FPC= Fort Portal City, KAS=Kassanda, KAG=Kagadi, KMA = Kampala Metropolitan (Kampala and Wakiso), BUN = Bunyangabu, KAK = Kakumiro, NAK = Nakasongola, LUW = Luweero, MTN = Mityana, MTM = Mitooma, NTG = Ntungamo

Case Management summaries as of 30th October 2022 at 22:00 HRS

<i>Updated 30Oct22 at 22:00 HRS</i>		<i>MUB</i>	<i>MAD</i>	<i>ENT</i>	<i>MUL</i>	<i>Total</i>
Bed Capacity	# of beds in the Isolation Unit	54	08	00	120	182
	# of ETU beds	36		67		103
Bed Occupancy	# of beds occupied in the Isolation Unit today	22	02	00	33	57
	# of beds occupied in the ETU today	33	00	15		48
Admission	# of suspect cases admitted to the Isolation Unit today	14	00	00	01	15
	# of Cases admitted to the ETU today		00	00		00
	# of walk in patients to the isolation Unit		00	00	01	01
Severity	# of Mild cases in the ETU today		00	12		12
	# of Critical cases in the ETU today		00	03		03
Discharge	# of patients discharged from the ETU	03	00	00		3
	# of patients discharged from the Isolation Unit	04	06	00	00	10
Death	# of suspect cases that died in the Isolation Unit	01	00	00	00	01
	# of patients that died in the ETU	03	00	00		03

Table Acronyms: MUB = Mubende RRH ETU, MAD = Madudu HCIII, EBB = Entebbe RR Hospital, MUL = Mulago NR Hospital

Actions to date

The Ministry of Health (MoH), Districts, and partners in Uganda are implementing several outbreak control interventions in Mubende and her surrounding districts to contain the disease spread. An overview of key activities is summarized below:

<i>Response Pillar</i>	<i>Key Updates in the past 24 hours</i>
<i>Coordination</i>	<ul style="list-style-type: none"> ➤ Hon. Minister and MoH leadership held coordination meeting with KCCA health officials and political leadership to gather support for EVD response in the metropolitan area. ➤ Daily DTF and IMT-specific meetings within all affected districts; NTF scheduled thrice a week.
<i>Surveillance and Contact tracing</i>	<ul style="list-style-type: none"> ➤ Total contacts under follow up within the past 24-hours are 1,540 within eight districts. Follow up rate for contacts is at 83% ➤ Total alerts validated within the past 24-hours were 91, of which 27 met the suspected case definition and 22 were evacuated. ➤ Team Kyegegwa reoriented 15 VHTs at Kasule HC 3 in contact tracing, listing and follow up; conducted an in-depth case investigation for the newly confirmed case; and mapped the porous points along the Kyegegwa – Mubende boarder in Kasule Sub County. ➤ A total of 17 alerts received from nine category #2, #3 districts: Hoima (01), Ibanda (01), Isingiro (01), Jinja (01), Kazo (01), Masaka (01), Mitooma (02), Mukono (02), Wakiso (07). All tested NEGATIVE for EVD (SUD)
<i>Laboratory</i>	<ul style="list-style-type: none"> ➤ Strengthened coordination between lab, surveillance and EMS for timely sample collection and filling of CIFs ➤ Timely sample collection upon receipt of filled CIFs, timely sample testing and release of test results, adequate test kit at testing laboratories ➤ Total of 75 samples processed at UVRI and Mubende mobile lab within the past 24 hours
<i>Case Management</i>	<ul style="list-style-type: none"> ➤ Reviewed Healthcare workers staffing & deployment for Mubende RRH ETU Isolation unit ➤ On-going preparations for staffing & operationalization of new ETU.
<i>Emergency Medical Services</i>	<ul style="list-style-type: none"> ➤ A total of 13 evacuations done in Mubende and 26 in Kassanda. ➤ Team discussed plan on getting all suspects tested on arrival with aim of improving delayed phlebotomy in light of increasing evacuations

Response Pillar**Key Updates in the past 24 hours**

<i>Safe and Dignified Burials</i>	<ul style="list-style-type: none"> ➤ Conducted two safe and dignified burials in Mubende and Kassanda within the past 24 hours and collected one sample. ➤ Seven backlog cases in the past 24 hours - teams unavailable, some alerts were received past 18:00 hrs.
<i>Infection Prevention and Control (IPC)</i>	<ul style="list-style-type: none"> ➤ Cleaned and disinfected two households where positive cases resided in Mubende municipality and Madudu sub county. ➤ Team Kassanda oriented 11 IPC district mentors on IPC Ring approach in EVD ➤ Conducted assessment of MRRH ETU to determine adherence of IPC SOPs and transmission based precautions during EVD response ➤ Developed a distribution list for IPC supplies meant for private clinics.
<i>WASH</i>	<ul style="list-style-type: none"> ➤ IPC and WASH continue to participate in the hotspot integrated community engagement activity ongoing in hotspot villages; plan to include traditional medicine practitioners.
<i>Risk Communication</i>	<ul style="list-style-type: none"> ➤ Total of 15 radio spots/messages continue to be aired through five radio stations while ten community audio towers are disseminating EVD messages in the ten hotspots in Mubende. ➤ EVD radio spots messages played on Kagadi FM radio, One talk-show held on Paradigm radio ➤ Three mobile audio systems mobilized communities of Kitenga, Kyenda Town councils & Kalonga in Buwekula constituency in Mubende.
<i>Social Mobilisation</i>	<ul style="list-style-type: none"> ➤ Team Kyegegwa conducted EVD sensitisation in two churches in Kibuuba (49 attendees in the Catholic Church and 53 in Anglican church) ➤ VHTs in Bugogo T/C and Kasule S/County of Kyegegwa conducted house to house sensitization on EVD Prevention; mapped out schools, traditional healers and religious leaders in Kibuba parish ➤ RCCE team engaged staff of 5 drug shops and 9 restaurants in Mubende municipality and oriented 30 (6 males, 24 females) staff and their clients. 30 IEC materials were distributed. Community Engagement
<i>Community Engagement</i>	<ul style="list-style-type: none"> ➤ Team Kyegegwa undertook one community engagement meeting in Kasule Town involving approximately 120 people, where EVD preventive messages were given. ➤ Team Kyegegwa Counselling the parents of the newly confirmed case plus residents of Kibuuba and Bubarebwerwa villages. ➤ ETU Support: Team Mubende provided psychosocial support to eight confirmed cases and four clients from suspect wing
<i>Mental Health and Psychosocial Social Support</i>	<ul style="list-style-type: none"> ➤ Resettlement: Team Mubende reunited two survivors with their communities, two clients from suspects ward were supported during transfer to medical and pediatric ward; nine discharged clients from emergency ward were prepared for discharge and reunited with their families; nine discharged clients from ETU annex were escorted back home; six clients from ETU Madudu were reunited with their families ➤ Survivors follow-up: four survivors were followed-up with psychosocial support - most of whom have medical concerns but can't access medical facilities due to lack of transport as a result of lockdown, also have challenges with making a livelihood.

Critical Challenges listed

- Myths and misconceptions and low EVD risk perception still exist within some of the affected communities.
- Human resource and IPC supplies challenges in light of increasing community-based evacuations and admissions as well as need to expand suspect case isolation

Key messages to the public

- People in the community should call an alert hotline or go to a health facility if they have symptoms (e.g., fever, headache, weakness, vomiting, bloody diarrhoea or urine, bleeding from body openings).
- Current hotline numbers for Mubende are: **0800200043 (Toll-free), 0762640374, 0762640379, 0708062203, 0702869375, 0708052008, 0762659215 (Not toll-free)**. For Kampala Metropolitan Area: **0800 299000 (toll-free), 0756979282, 0782160174, 0780384997, 0771414202 (non-toll free)**. Bunyangabu: **0787437139**
- Free alert SMS on **6767** starting with the 'ALERT' key word; Free alert SMS to U-report on 8500
- Community should not fear people who have been discharged from the ETU and returned home.