

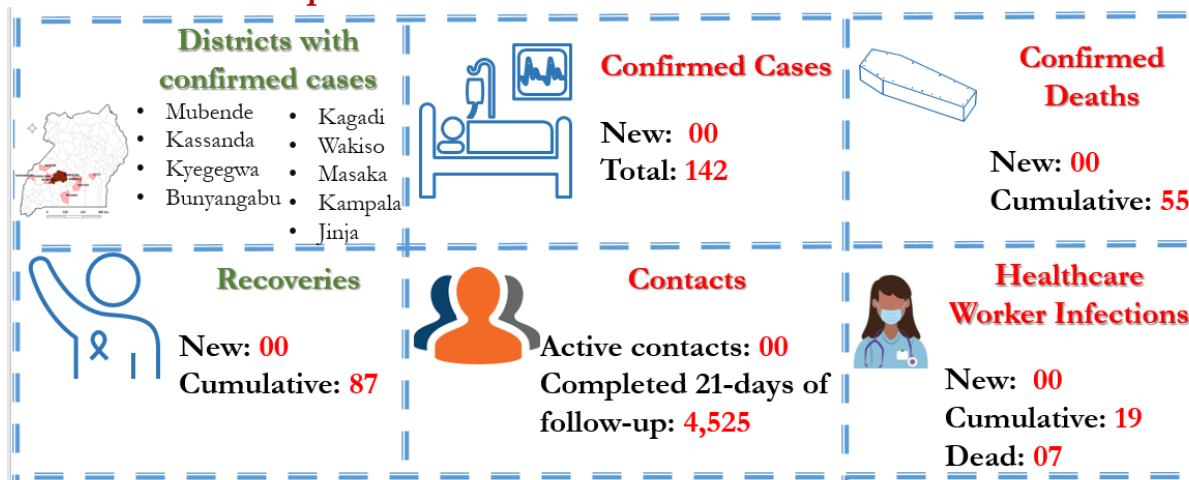
# EBOLA VIRUS DISEASE

## Republic of Uganda



### Situation Report 77

Data update as of 18<sup>th</sup> December 2022 at 22 :00 HRS



### Background

On 20<sup>th</sup> September 2022, the Ministry of Health declared an outbreak of Sudan Ebola Virus (SVD) after a case managed at Mubende Regional Referral Hospital (MRRH) in Mubende district was confirmed through testing at the Uganda Virus Research Institute (UVRI). This followed investigations by the National Rapid Response Team of suspicious deaths that had occurred in the district earlier in the month. This is the first time in more than a decade that Uganda reports an outbreak of Sudan ebolavirus

## Key Highlights

Today marks 93 days of responding to the EVD outbreak, and 21 days since the last confirmed case.

- ➔ Within the past 24 hours, there was no new confirmed case or death registered; there was no recovery.
- ➔ Case Fatality Ratio (CFR) among confirmed cases still stands 55/142 (39%).
- ➔ All six contacts previous being followed-up in Kassanda District have completed 21-days of follow-up today, currently no active contacts.

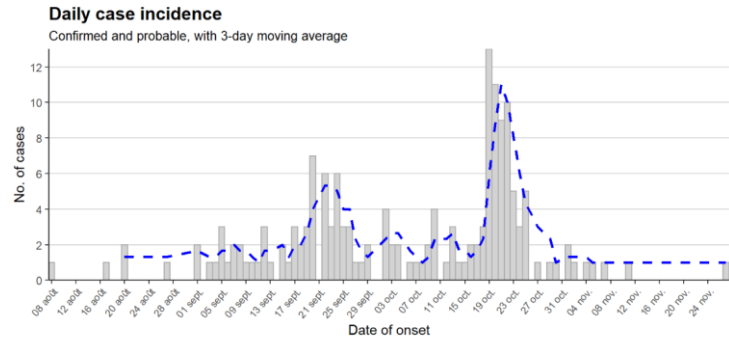


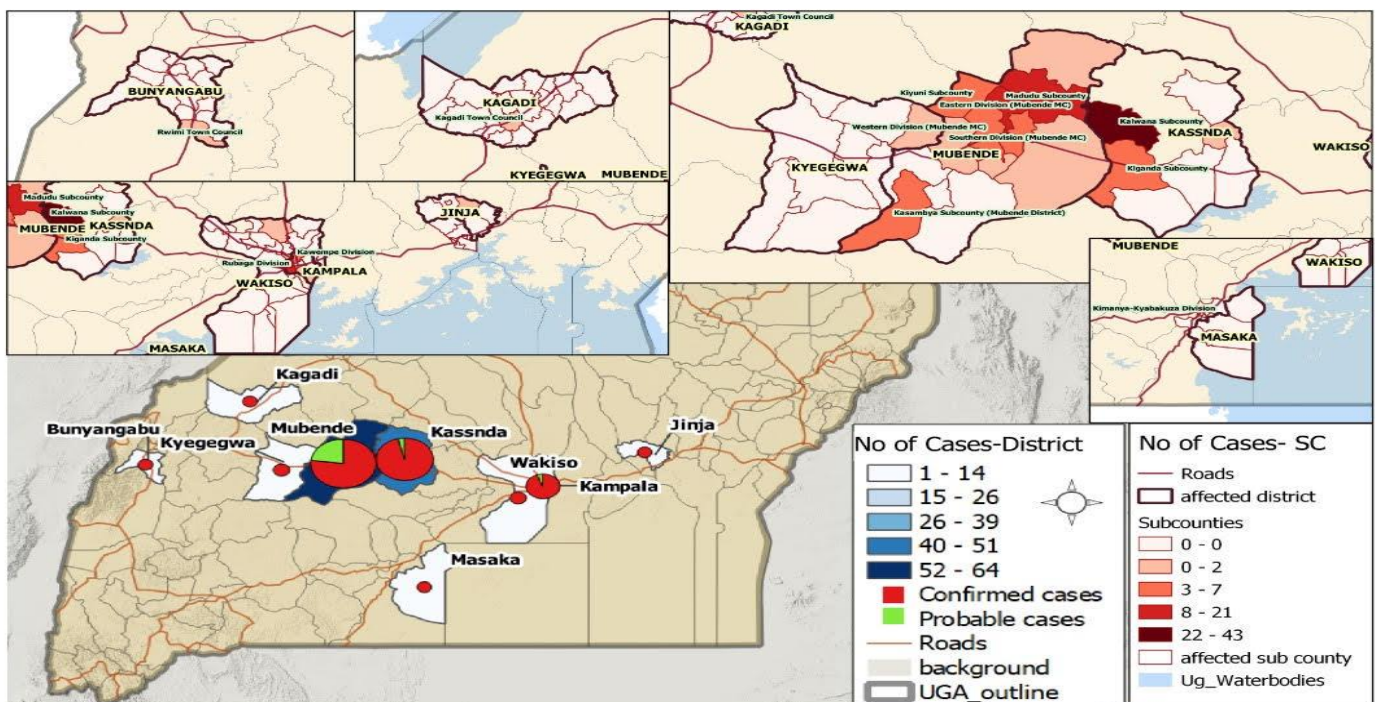
Figure: Time analysis of affected individuals

## Summary of Cases as of 18<sup>th</sup> December 2022 at 22:00 HRS

	Last 24 Hours									
	MUB	KYE	KAS	KAG	MSK	WAK	JJA	KLA	BUN	Total
Confirmed Cases	00	00	00	00	00	00	00	00	00	00
Confirmed Deaths	00	00	00	00	00	00	00	00	00	00
Recoveries	00	00	00	00	00	00	00	00	00	00
Cumulative										
Confirmed Cases	64	04	49	01	01	03	01	18	01	142
Deaths										
Confirmed	29	01	20	01	01	00	01	02	00	55
Probable	19	00	02	00	00	00	01	00	00	22
Days since last confirmed case	35	51	21	81	47	42	36	34	78	-
Recoveries	38	03	26	00	00	03	00	16	01	87
Confirmed HCW										
Confirmed	14	00	01	01	00	00	00	02	01	19
Deaths	6	00	00	01	00	00	00	00	00	07

Table Acronyms: MUB=Mubende, KYE=Kyegegwa, KAS=Kassanda, KAG=Kagadi, WAK = Wakiso, KLA = Kampala, MSK = Masaka, JJA = Jinja, BUN=Bunyangabu, HCW=Healthcare Worker

## Place analysis of affected persons by district as of 18<sup>th</sup> December 2022 at 22:00 HRS



## Alert Management, Evacuations, Burials summaries as of 18<sup>th</sup> December 2022 at 22:00 HRS

Updated 18Dec22 at 22:00 hrs	Last 24 Hours															
	MUB	KAS	KMA	MSK	JJA	Total		MUB	KAS	KMA	MSK	JJA	Total			
EVD Alerts	16	19	15	11	11	72	EMS Ambulance fleet	10	6	4	3	1	24			
Alerts Verified	4	19	11	1	4	39	EMS alerts handled	2	4	0	0	0	6			
Alerts meeting suspect case definition	3	0	0	1	1	5	EMS evacuations - ALL	2	4	0	0	0	6			
Alerts evacuated	1	0	0	0	0	1	- to ED	0	4	0	0	0	4			
All death alerts received	2	3	0	0	2	7	- to ETU	0	0	0	0	0	0			
Verified Death Alerts	2	3	0	0	1	6	- to Madudu	0	0				0			
SDBs undertaken	2	4	0	0	0	6	- to Annex, MOW	1	0				1			
- Backlog cases today	0	0	0	0	0	0	- declined	0	0	0	0	0	0			
- Samples collected	2	3	0	0	0	5	Triage Category - Red	1	1	0	0	0	2			
Cumulative SDBs undertaken	420	337	0	0	8	765	- Yellow	0	2	0	0	0	2			
Samples tested (suspects, rebleed, swabs)	6	6	3	2	2	19	- Green	0	1	0	0	0	1			
							Cumulative Evacuations									
							EVD	1,242	344	38	43	35	1,702			
							Non-EVD	1,026	563				1,589			
	Cumulative															
	MUB	KAS	KMA	MSK	JJA	KYE	KAK	KAG	FPC	LUW	NAK	NTG	MTN	MTM	BUN	
Contacts listed	2,190	1,037	534	163	527	70	67	23	3	5	8	20	82	16	48	
Contacts completed 21 days of follow-up	2,105	856	534	163	527	67	67	23	3	5	8	20	82	16	48	

**Table Acronyms:** MUB=Mubende, KYE=Kyegegwa, FPC= Fort Portal City, KAS=Kassanda, KAG=Kagadi, KMA = Kampala Metropolitan (Kampala + Wakiso), BUN = Bunyangabu, KAK = Kakumiro, NAK = Nakasongola, LUW = Luweero, MTN = Mityana, MTM = Mitooma, NTG = Ntungamo, MSK = Masaka, JJA = Jinja

### Actions to date

The Ministry of Health (MoH), Districts, and partners in Uganda are implementing several outbreak control interventions in Mubende and her surrounding districts to contain the disease spread. An overview of key activities is summarized below:

#### Response Pillar

#### Key Updates in the past 24 hours

<i>Coordination</i>	<ul style="list-style-type: none"> <li>➔ Lockdown restrictions in Kassanda and Mubende have been lifted</li> <li>➔ Regular District Task Force meetings ongoing in all affected districts, National Task Force meets twice a week.</li> <li>➔ Plans for de-escalation of response activities undergoing in all affected districts.</li> <li>➔ All six active contacts in Kassanda completed 21-days of follow-up today, the two healthcare workers originally quarantine have been discharged.</li> </ul>
<i>Surveillance &amp; Contact tracing</i>	<ul style="list-style-type: none"> <li>➔ Total alerts validated in past 24 hours were 39 from Mubende, KMA, Kassanda, Masaka and Jinja districts; five of these met the suspected case definition and one was evacuated.</li> <li>➔ In the past 24-hrs, a total of seven alerts received from six CAT #2, #3 districts. All tested NEGATIVE for EVD (SUD)</li> </ul>
<i>Laboratory</i>	<ul style="list-style-type: none"> <li>➔ Total of 26 samples processed at UVRI and the mobile labs in Kampala and Mubende within the past 24-hrs; average samples processed daily within the past seven days stand at 50.</li> <li>➔ Cumulative samples tested are 5,272 with 142 testing POSITIVE for EVD (SUD)</li> </ul>
<i>Case Management</i>	<ul style="list-style-type: none"> <li>➔ Zero confirmed cases on admission currently, routine patient care services ongoing.</li> <li>➔ Beds occupied in suspected wards are 02/30 in Mubende new ETU and 02/08 in Madudu in the past 24-hrs.</li> <li>➔ Three patients discharged from the new ETU and two from Madudu, in the past 24-hrs.</li> </ul>
<i>Emergency Medical Services</i>	<ul style="list-style-type: none"> <li>➔ Within the past 24-hours, teams undertook a total of six evacuations (Mubende - 02, Kassanda - 04).</li> <li>➔ No clients declined evacuation.</li> <li>➔ Cumulative EVD evacuations in Mubende, Kassanda, KMA, Masaka and Jinja stand at 1,702; cumulative non-EVD evacuations in Mubende and Kassanda = 1,589.</li> </ul>
<i>Safe &amp; Dignified Burials</i>	<ul style="list-style-type: none"> <li>➔ Within the past 24-hours, total of six death alerts and one backlog verified from Mubende and Kassanda.</li> <li>➔ Conducted six safe and dignified burials in Mubende, Kassanda within the past 24 hours and collected five samples.</li> <li>➔ Zero backlog cases in past 24-hours.</li> <li>➔ Cumulative SDBs conducted in Mubende: 420, Kassanda: 337 and eight in Jinja</li> <li>➔ Two more SDB teams being trained in Kassanda.</li> </ul>
<i>Infection Prevention and Control (IPC)</i>	<ul style="list-style-type: none"> <li>➔ Team Mubende conducted IPC assessment to Madudu ETU, the score was 78%; Conducted IPC mentorship to 10 health workers on Laundry, chlorine mixing and unidirectional flow.</li> <li>➔ Team Kassanda held an IPC mentorship in three private health facilities and mentored five health workers;</li> </ul>

<p>Risk Communication &amp; Public Awareness</p>	<p>distributed IPC/WASH items to Kassanda Town council.</p> <ul style="list-style-type: none"> <li>➤ At least 141 radio spot messages continue to be aired daily through 10 radio stations: Kyegegwa (08), Kagadi (06), Kassanda (10), Kakumiro (10), Mubende (39), Masaka (13), Sembabule (13), Kazo (20) and Kabalore (22).</li> <li>➤ Total of 18 radio spots run on six Community Audio Towers in Masaka City and district.</li> <li>➤ Conducted one Radio Talk shows on EVD held Kyegegwa.</li> <li>➤ Distributed 253 EVD Posters, 7 Question &amp; Answer booklets, 270 brochures, 120 medical masks to religious leaders in Kasanda, Kagadi and Lyantonde districts.</li> </ul>
<p>Social Mobilisation</p>	<ul style="list-style-type: none"> <li>➤ Reached a total of 8,545 (F-4,259, M-4,286) community members through door-door mobilization in the districts of Kyegegwa, Mubende, Kasanda, Kagadi, Buyangabu and Masaka with support from URCS</li> <li>➤ Team Kagadi engaged 5 male religious and local leaders in Luteete on their responsibility in ensuring that another EVD case is prevented</li> <li>➤ Team Lyantonde engaged 41 mothers with EVD messages at Lyantonde hospital.</li> <li>➤ Team Kasanda engaged 49 (M-32 F-17) religious leaders in a dialogue in Bukuya Sub-County</li> <li>➤ Activated Bukuya religious leaders' taskforce</li> <li>➤ Team KCCA's VHTs conducted 1,598 household visits reaching 6,273 individuals (Female 4,184 and Male 2,089) and 2,944 children.</li> <li>➤ Total of 58 group meetings were conducted in Butabika parish, Nakawa market, Kibuli, Katwe, Luhuli, Kisu among others, and reached 1,737 (F=1,060, M=677) individuals</li> <li>➤ Team Mukono's VHTs conducted 758 household visits across 5 Sub counties covering 20 villages and reached a total of 5,600 individuals (F=2,966 M=2,634) and 1,199 children.</li> <li>➤ Team Jinja conducted five community-based dialogue meetings with 30 people at Mbale village in Buyengo sub county, 55 people at Buddoma, 20 men at Kanaba trending center 20 people at Bugobya and 20 men at Magamaga trading center in Busedde sub county. These reached 145(85M &amp; 60F)</li> </ul>
<p>Stakeholder Engagement</p>	<ul style="list-style-type: none"> <li>➤ Team Kagadi held a group discussion in various trading centres in Luteete sub-county reaching 75 (42M 33F) with EVD preparedness messages</li> <li>➤ Engaged 163 (54M 74F 35children) on EVD preparedness at ST. Francis Catholic Church in Buhumuro, Luteete sub-county during their Sunday Mass.</li> <li>➤ Team KCCA conducted 38 group meetings were held in Butabika parish, Nakawa market, Kibuli, Katwe, Luhuli, Kisu among others reaching 1,683 (Female 1,220 &amp; Male 463) individuals.</li> <li>➤ Team Kassanda engaged a total of 23 VHT parish coordinators, youth leaders, women leaders, representatives of people with disabilities and LCIII chairperson on EVD and their roles and responsibilities in Kitumbi sub-county.</li> <li>➤ Team KCCA sensitized 450 members of the congregation (male 150 &amp; female 250) of St. Jude Kabowa Church of Uganda, Rubaga Division.</li> </ul>
<p>Mental Health &amp; Psychosocial Social Support</p>	<ul style="list-style-type: none"> <li>➤ <b>ETU SUPPORT:</b> Psychosocial support given to 10 clients in Mubende RRH, new ETU, Madudu; Two healthcare workers discharged from quarantine, PSS offered prior to discharge.</li> <li>➤ <b>RESETTLEMENT:</b> Five clients from new ETU and Kikandwa escorted back home; two clients from Madudu re-united with family; Communities engaged where discharged clients were resettled.</li> <li>➤ <b>SURVIVOR FOLLOW-UP:</b> Three survivors visited; four followed-up via tele-conferencing; Sex education addressed with emphasis on condom use.</li> </ul>

**Key messages to the public**

- People in the community should call an alert hotline or go to a health facility if they have symptoms (e.g., fever, headache, weakness, vomiting, bloody diarrhoea or urine, bleeding from body openings).
- Hotline numbers are: **0800200043** for Mubende and Kassanda; **0800299000** for Kampala Metropolitan Area, **0800300043** for Masaka, **0800355411** for Kagadi all toll-free, **0800300046** for Jinja, and **0787437139** for Bunyangabu (not toll-free).
- Free alert SMS on **6767** starting with the 'ALERT' key word; Free alert SMS to U-report on 8500
- Community should not fear people who have been discharged from the ETU and returned home.