

Republic of South Sudan

Measles Outbreak and Response Weekly Situation Update

Issue number: 14
 Issue Date: 11 April 2024
 Epidemiological week: Week 14 (01 – 07 April, 2024)

Suspected Measles Cases New (11) cases with date of onset in week 14 Cumulative (12,933)	Lab Confirmed Cases New (0) Cumulative (1,148)	Deaths New (0) Cumulative (250) CFR 1.9
---	---	---

* The above data is cumulative from 2022

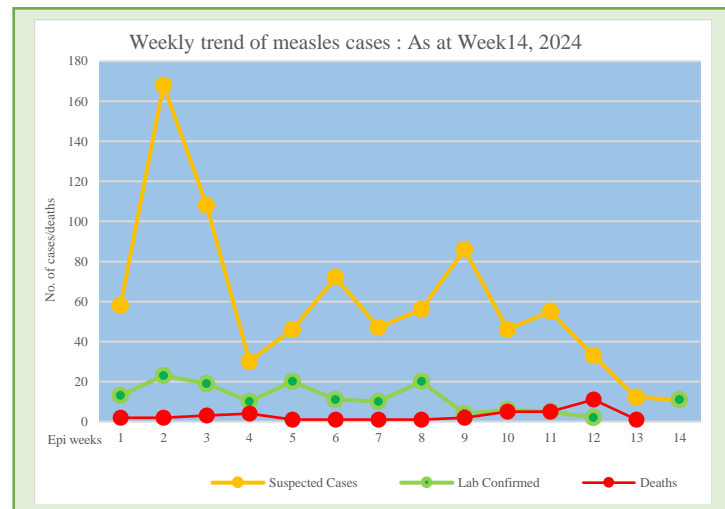
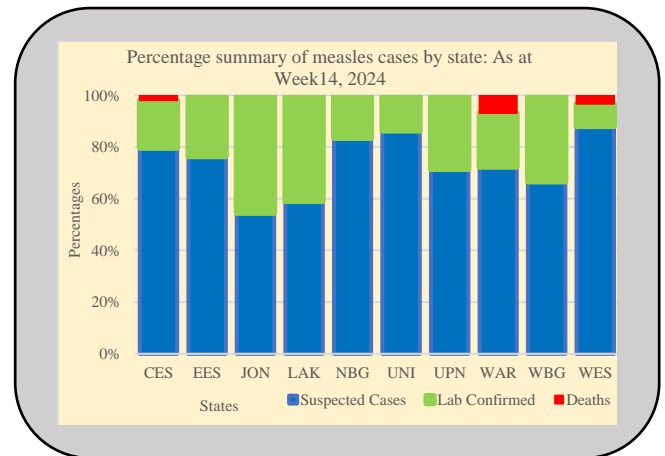
Background

As of Epi week 14, 2024, a total of 828 suspected measles cases were reported, with 140 (16.9%) lab-confirmed, 22 deaths, and a case fatality rate of 2.7.

An increase in suspected cases from 670 in week 13 to 828 in week 14 shows heightened surveillance; however, lab-confirmed cases remain the same for both weeks.

As of Epi week 14 in 2024, reactive vaccination efforts have led to county-wide campaigns in Maridi, Mundri East, and Tonj North, vaccinating 115,981 children against Measles. Preparations for a campaign in Tonj South are now underway. Details are in Annexes 1 and 2.

Epi week 14 data show one ongoing outbreak in **Morobo-Lojulo** payam, but six (6) counties reporting suspected/confirmed cases yet to reach the outbreak threshold, warranting further investigation and laboratory validation.



Key weekly Situation Update as of 07 April 2024

- A total of 158 additional suspected cases were reported from **Ibba(19)**, **Nzara(36)**, **Tambura(60)**, **Tonj East(12)**, **Yambio(31)** since the last update, where 7 were epi-linked and 151 clinically compatible.
 - Eleven (11) suspected cases in week 14
 - No newly confirmed cases this week
 - Eleven (11) additional deaths reported from **Nzara(8)**, **Tambura(2)**, **Yambio(1)**
- **Morobo-Lojulo** payam currently has an ongoing outbreak
 - **Ibba, Juba, Nzara, Tambura, Tonj East and Yambio** continue to report suspected/confirmed cases yet to reach the outbreak threshold and need for more investigation and samples collection for testing as per the revised SOP

Republic of South Sudan

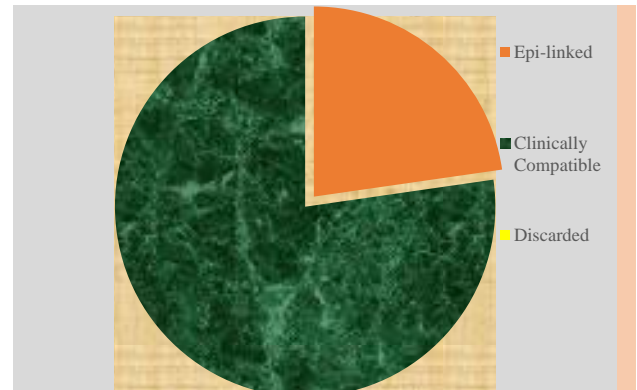
Measles Outbreak and Response Weekly Situation Update

Summary of cases as of 07 April 2024

Table 1: Distribution of cases by final classification 2024

FINAL CLASSIFICATION	2024	
	NO. OF CASES	%
Lab confirmed	140	16.9
Epi-linked	224	27.1
Clinically Compatible	391	47.2
Total	755	91.2
Discarded (-ve)	73	8.8
Grand Total	828	100.0

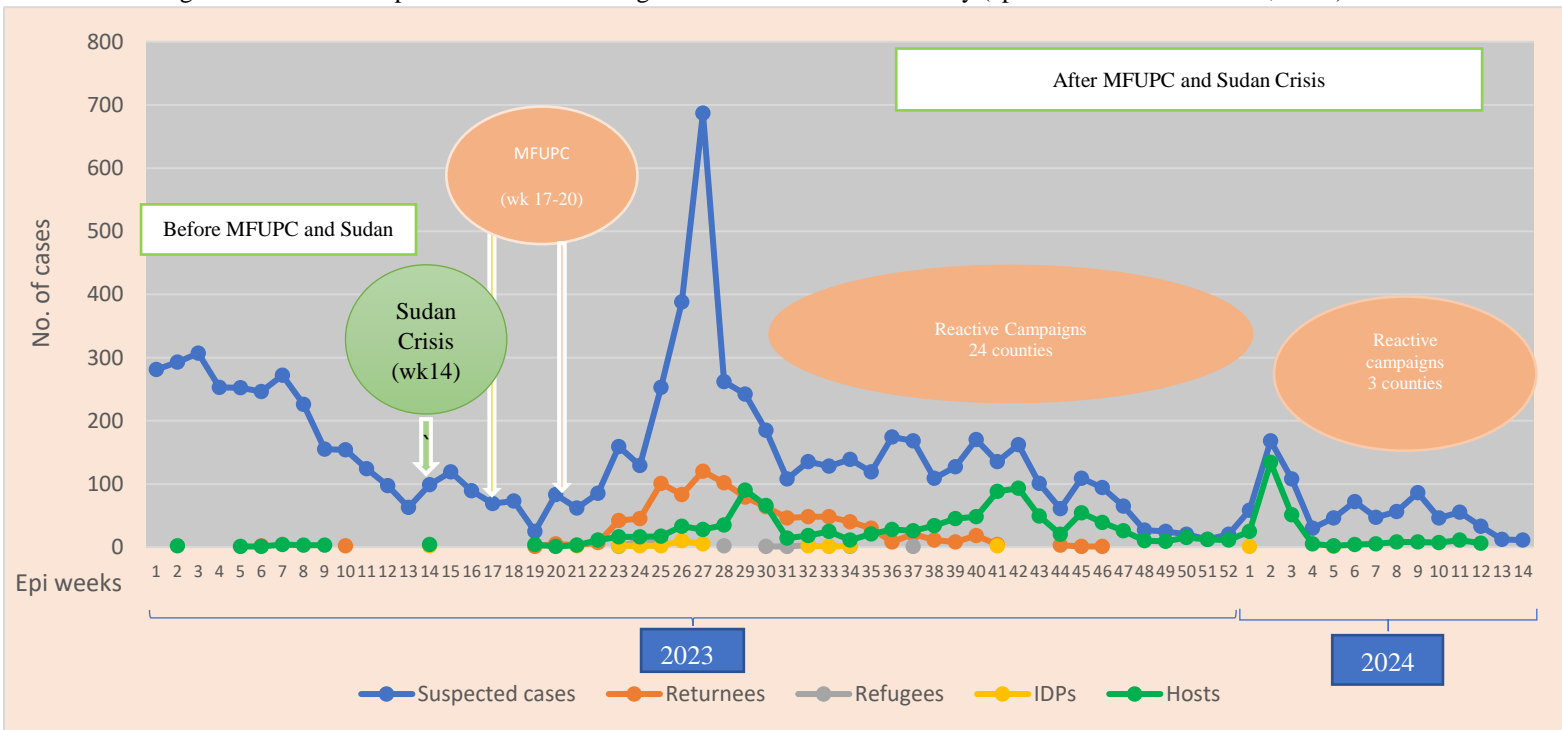
Figure 1: Distribution of deaths by final classification: 2024



A total of 22 reported deaths, 5 (23%) from the clinically compatible cases and 17 (77%) from the epi-linked cases.

Out of the 828 suspected measles cases, 140 (16.9%) are lab-confirmed, 224 (27.1%) epi-linked, 391 (47.2%) clinically compatible, and 73 (8.8%) discarded cases have been reported as of epidemiological week 14, 2024. A total of 14 rubella positive cases from the discarded (negative measles cases)

Figure 2: Trend of suspected measles cases against their residential status by (epi week 1 2023 – week 14, 2024)



Note: Measles cases have been reported from different counties throughout 2023-2024. The observed peaks are driven by other counties that experienced a surge in measles cases at various times. The Sudan crisis started in week 14 of 2023, with the influx of returnees and refugees since then. The nationwide MFUPC also took place from week 17-20.

Republic of South Sudan Measles Outbreak and Response Weekly Situation Update

Figure 3: A map showing lab -confirmed outbreak counties in February (week10 to Week14, 2024)

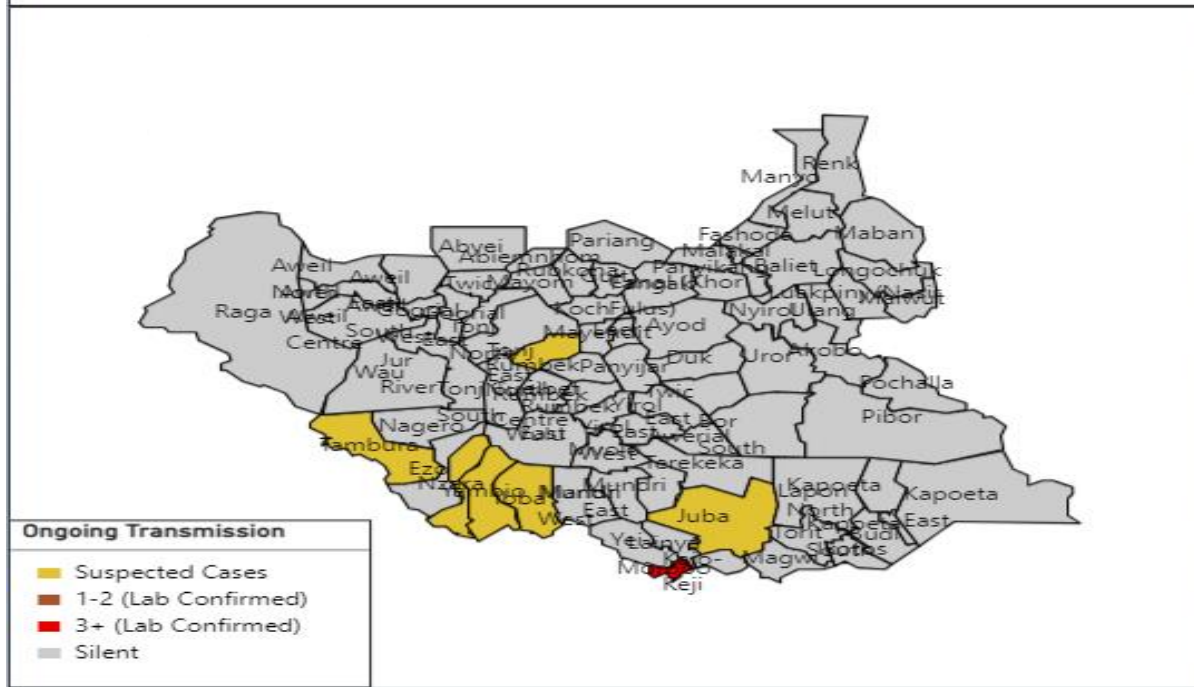
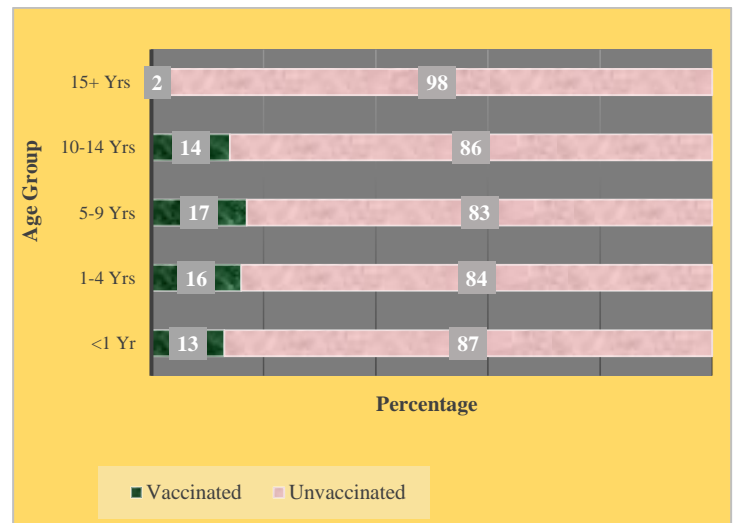


Table 2: Distribution of reported measles cases and deaths by age groups in South Sudan, 2024

Age Groups	2024				
	No. of suspected Cases	No. of confirmed Cases	%	Deaths	%
<1 yr	220	22	10.0	12	5.5
1-4 yrs	336	56	16.7	6	2.4
5-9 yrs	115	37	32.2	2	1.7
10-14 yrs	69	12	17.4	0	00
15+ yrs	88	41	46.6	0	00
Total	828	140	16.9	22	2.7

Note: More than half 556 (67%) of all the suspected measles cases are children below 5 years of age. The case fatality rate is (2.7 %) while 272 (33%) are among other ages from 5 years and above.

Figure3: Percentage distribution of measles cases and their vaccination status: 2024



Note: 715(86%) were unvaccinated (zero, unknown) including 474(66%) children less than 5 years. Among children less than one year old 220 cases, 192(87%) have not been vaccinated.

Surveillance and Laboratory

- Enhanced surveillance ongoing in silent counties
- Sample collection for all counties that last had a confirmed measles outbreak in the last four weeks to track the Measles epidemiology.
- Enhance surveillance for VPDs, especially at the points of entry for the refugees, returnees from Sudan, and in the silent counties
- Ensure weekly reporting (including zero dose reporting where applicable)



Republic of South Sudan Measles Outbreak and Response Weekly Situation Update

Case Management

- The MOH, WHO, and partners are intensifying measles case management (including vitamin A administration), surveillance, and risk communication in locations with suspected and confirmed outbreaks
- In collaboration with partners and MOH, WHO is prepositioning kits to support case management in counties with active outbreaks.

Vaccinations

- The reactive campaign continued in 2024. As of Epi week 13, three counties (Maridi, Mundri East, and Tonj North) implemented the reactive campaign and vaccinated **115,981 (112%)** under-five children
- Tonj South County completed the preparation. The vaccine and supply were delivered, and the campaign started on April 11, 2024, in all Payams.
- MP revised and approved for 15 counties with confirmed outbreaks (Aweil East, Aweil North, Aweil South, Aweil West, Aweil Center, Twic, Rumbek Center, Wulu, Juba, Yei, Yambio, Tambura, Nzara, Ezo and Ibba). The operational fund is prepared based on the approved MP.
 - 10 counties in WES and NBG are prioritized to implement the reactive campaign using the available vaccine stock while Unicef is receiving additional vaccines to the country
 - The campaign is tentatively scheduled to be implemented a week after the nOPV2 campaign.
- MoH will work with identified partners to ensure quality campaigns
- POE/Temporary transit post vaccination activities implemented in 15 sites of 8 counties (Juba, Akobo, Aweil East, Aweil North, Malakal, Maiwut, Melut and Rubkona). The activity commenced in Dec 2023 and continued in Jan 2024. The antigens used at POE/Transit post are Measles and OPV.
- A total of **15,143** children under 15 were vaccinated for measles, and **14,358** were vaccinated for OPV in the 15 POE/Transit post vaccination sites.
 - Operational fund is released to 7 counties to initiate the POE activities in 13 sites.
 - Vaccination activity started in transit posts in Akobo and Melut counties.

Demand Generation/ Communication

- Demand generation activities ongoing for the planned mop-up and reactive campaigns as well as routine immunization (radio talk shows and jingle broadcast)

Operational challenges and gaps

- Inadequate detailed investigation of suspected measles cases and deaths in counties reporting suspected cases of measles
- Inadequate sample collection for laboratory confirmation and classification cases of suspected measles cases
- A high proportion of unvaccinated/unknown status children (80%) was detected among the cases, noting the inadequate quality of investigations and gaps in immunization, especially among the returnees and refugees.
- Late and constant retrospective reporting of suspected cases
- Incomplete and inaccurate filling of line lists and CIFs

Way Forward

- Lab confirmed outbreaks to be followed with detailed outbreak reports
- Root cause analysis planned and led by MOH
- MOH and partners to support the planned mop-up campaign and other measles activities
- State and County MOH to continue weekly reporting of measles cases (including zero reporting where applicable)
- UNICEF to fill in the anticipated Measles vaccine rupture.
- Prompt detection and management of measles cases
- Addition of Vitamin A in future responses, and inclusion of nutrition teams
- Blood samples to be collected from suspected cases in counties that continue to report, and the lab confirmation is beyond 4 weeks to monitor the epidemiology
- Collection of nasopharyngeal swabs from new cases
- Strengthen routine immunization at POEs and within the community



Republic of South Sudan Measles Outbreak and Response Weekly Situation Update

- Prioritize case management to reduce morbidity and mortality.
- Enhance risk communication and community engagement in health and help-seeking behavior.

Appendix: Measles Reactive Vaccination (Jan to April 2024)

#	County	Target age group	Type of vaccination	Supporting Partner	Status of Implementation
1	Maridi	6 to 59 months	Reactive	WHO/Unicef	• Completed (Final data submitted)
2	Mundri East	6 to 59 months	Reactive	WHO/Unicef	• Completed (Final data submitted)
3	Tonj North	6 to 59 months	Reactive	WHO/Unicef	• Complete (Final data submitted)
4	Tonj South	6 to 59 months	Reactive	WHO/Unicef	• ongoing

Annex 1: Measles Reactive Vaccination Data from 3 counties, January 2024

County	Measles Target popn (6 months to 14 years)					Status
	Target	Host	Returnee	Total	Coverage	
Maridi	24,025	25,858	80	25,938	108%	Complete
Mundri East	16,577	16,074	0	16,074	97%	Complete
Tonj North	63,216	73,969	0	73,969	117%	complete
Total	103,818	115,901	80	115,981	112%	

Annex 2: POE/Temporary Transit site Measles and OPV vaccination Dec 2023 and Jan 2024

State	County	# of POE/ Transit Post	Measles				OPV			
			6 -11 months	12 - 59 months	6 - 14 Years	Total Vaccinated	0 – 11 months	12 - 59 months	6 - 14 Years	Total Vaccinated
CES	Juba	3	163	621	711	1495	180	553	594	1,327
Jonglei	Akobo	2	923	1201	1902	4026	1617	2000	2360	5,977
Upper Nile	Malakal	1	26	195	417	638	50	201	409	660
	Melut	3	60	249	153	462	75	207	143	425
	Maiwut	2	482	675	637	1794	60	89	39	188
NBG	Aweil East	1	248	1064	1486	2798	287	918	1255	2,460
	Aweil North	2	514	1104	811	2429	472	813	413	1,698
Unity	Rubkona	1	433	594	474	1501	563	579	481	1,623
Total		15	2849	5703	6591	15143	3304	5360	5694	14,358

Dr. John Rumunu Incident Manager E: ori.moiga@gmail.com P: +211 924 767 490	Dr. Joseph Lasu Emergency Preparedness & Response Director E: josh2013.lasu@gmail.com P: +211 921 395 440	South Sudan PHEOC E: sspheoc@gmail.com P: +211 925 851 662/ +211 917 235 355	Dr Aggrey Bategereza EP&R TL, WHO E: bategerezaa@who.int P: +211 924222030
---	---	--	--

For more information, please contact above persons
This report was prepared with technical support from World Health Organization, Juba.