

# Republic of South Sudan

## Measles Outbreak and Response Weekly Situation Update

Issue number: 17  
 Issue Date: 06 May 2024  
 Epidemiological week: Week 17 (22 – 28 April, 2024)

<h3 style="margin: 0;">Suspected Measles Cases</h3> <p style="margin: 0;">New (0) cases with date of onset in week 17</p> <p style="margin: 0;">Cumulative (14,376)</p>	<h3 style="margin: 0;">Lab Confirmed Cases</h3> <p style="margin: 0;">New (0)</p> <p style="margin: 0;">Cumulative (1,154)</p>	<h3 style="margin: 0;">Deaths</h3> <p style="margin: 0;">New (0)</p> <p style="margin: 0;">Cumulative (267)</p> <p style="margin: 0;">CFR 1.9</p>
---	--	---

\* The above data is cumulative from 2022

### Background

As of Epi week 17, 2024, a total of 2,271 suspected measles cases were reported, with 146 (6.4%) lab-confirmed, 39 suspected Measles death, and a case fatality rate of (1.7).

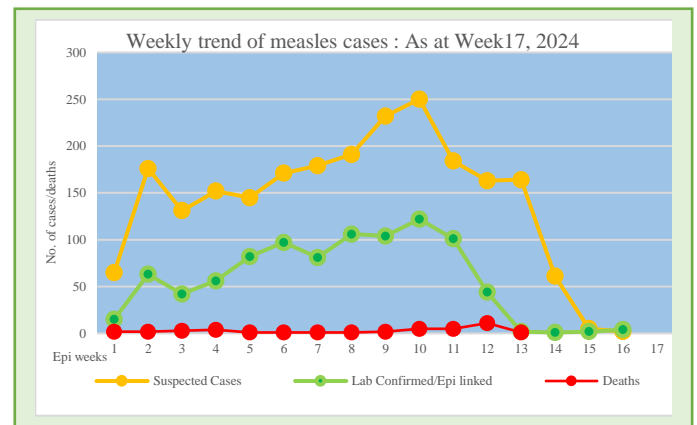
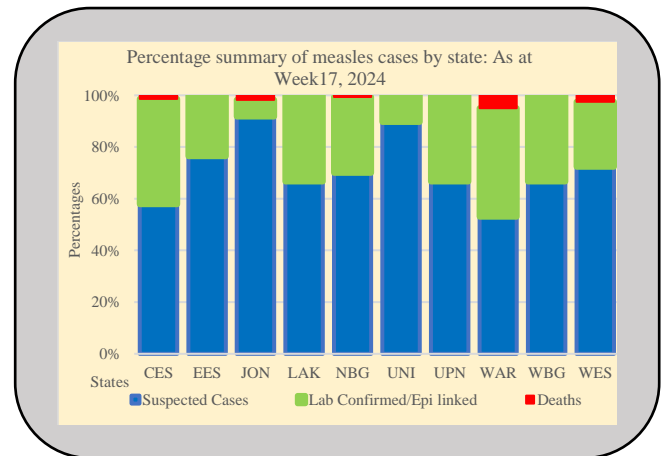
The observed surge in suspected Measles cases with a peak in week 10 and a steady decline since then, indicates an effective increase in interruption efforts.

The high discrepancy between suspected and confirmed cases highlights a critical need for enhanced sample collection and robust laboratory testing to ensure accurate diagnosis. Improving these aspects will aid in more precise outbreak investigation and reporting, allowing for more targeted public health interventions and resource allocation.

As of Epi week 17 in 2024, reactive vaccination efforts have led to county-wide campaigns in 9 counties (Maridi, Mundri East, Tonj North, Tonj South, Aweil East, Aweil South, Aweil Center, Aweil North, and Aweil West) vaccinating 347,812 (86%) children against Measles, of which 9,119 (2.6%) are returnees. The final Vaccination data from 5 counties of NBG is yet to be submitted.

Preparation is underway for 5 outbreak affected counties in Western Equatoria State to be implemented from 7<sup>th</sup> to 14<sup>th</sup> of May 2024. Details are in Annexes 1 and 2.

Epi week 17 data shows no ongoing outbreak, but eight (8) counties reporting suspected/confirmed cases yet to reach the outbreak threshold, warranting further investigation and laboratory validation.



### Key weekly Situation Update as of 28 April 2024

- No additional cases reported this week
- No new outbreak
  - Aweil West, Abyei, Fashoda, Fangak, Lainya, Ibba, Tonj East and Yirol West continue to report suspected/confirmed cases yet to reach the outbreak threshold and need more investigation and samples collection for testing as per the revised SOP

# Republic of South Sudan

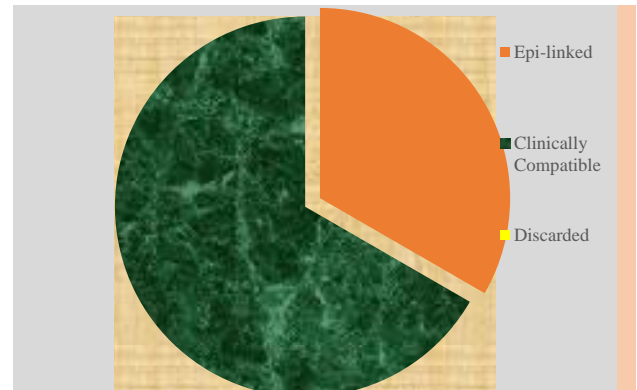
## Measles Outbreak and Response Weekly Situation Update

### Summary of cases as of 28 April 2024

Table 1: Distribution of cases by final classification 2024

FINAL CLASSIFICATION	2024	
	NO. OF CASES	%
Lab confirmed	146	6.4
Epi-linked	772	34.0
Clinically Compatible	1,254	55.2
<b>Total</b>	<b>2,172</b>	<b>95.5</b>
Discarded (-ve)	99	4.5
<b>Grand Total</b>	<b>2,271</b>	<b>100.0</b>

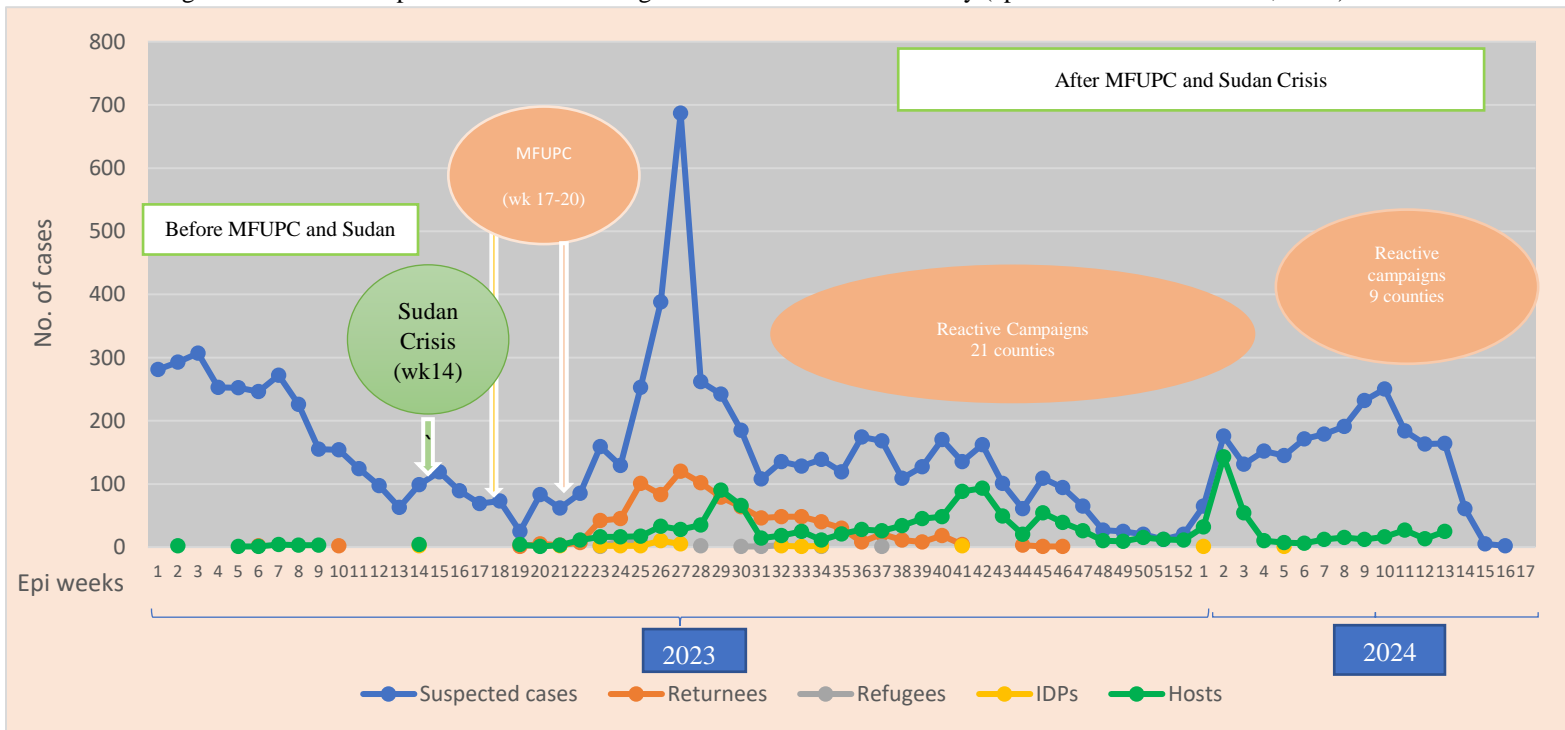
Figure 1: Distribution of deaths by final classification: 2024



A total of 39 reported deaths, 26 (66%) from the clinically compatible cases and 13 (34%) from the epi-linked cases.

Out of the 2,271 suspected measles cases, 146 (6.4%) were lab-confirmed, 772 (34.0%) epi-linked, 1,254 (55.2%) clinically compatible, and 99 (4.5%) discarded cases have been reported as of epidemiological week 16, 2024. A total of 25 rubella positive cases from the discarded (negative measles cases)

Figure 2: Trend of suspected measles cases against their residential status by (epi week 1 2023 – week 17, 2024)



**Note:** Measles cases have been reported from different counties throughout 2023-2024. The observed peaks are driven by other counties that experienced a surge in measles cases at various times. The Sudan crisis started in week 14 of 2023, with the influx of returnees and refugees since then. The nationwide MFUPC also took place from week 17-20.

## Republic of South Sudan Measles Outbreak and Response Weekly Situation Update

Figure 3: Map showing lab-confirmed outbreak counties in February (week14 to Week17, 2024)

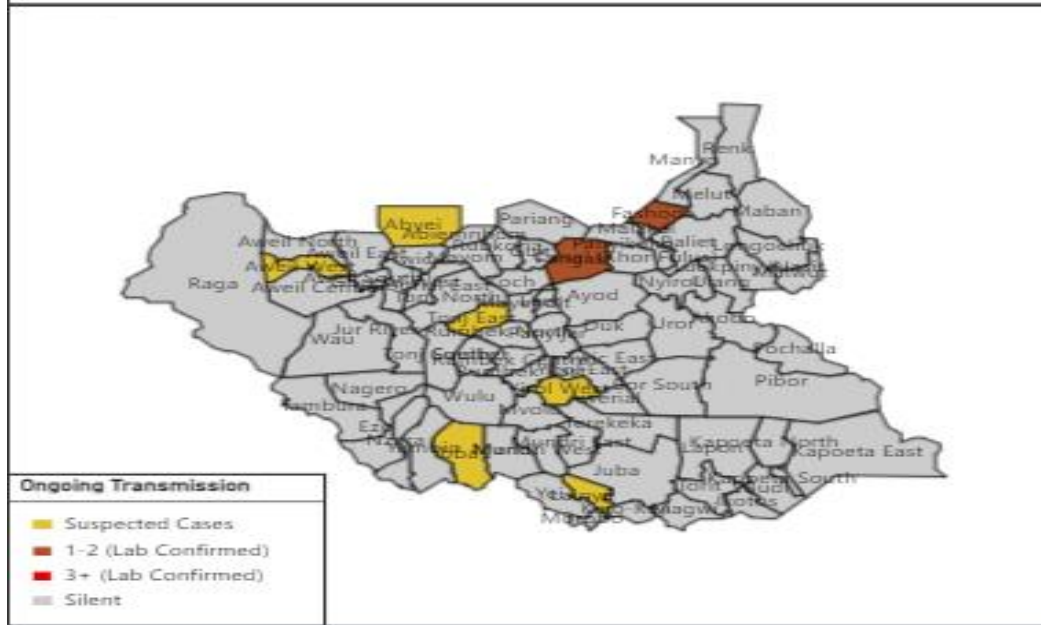
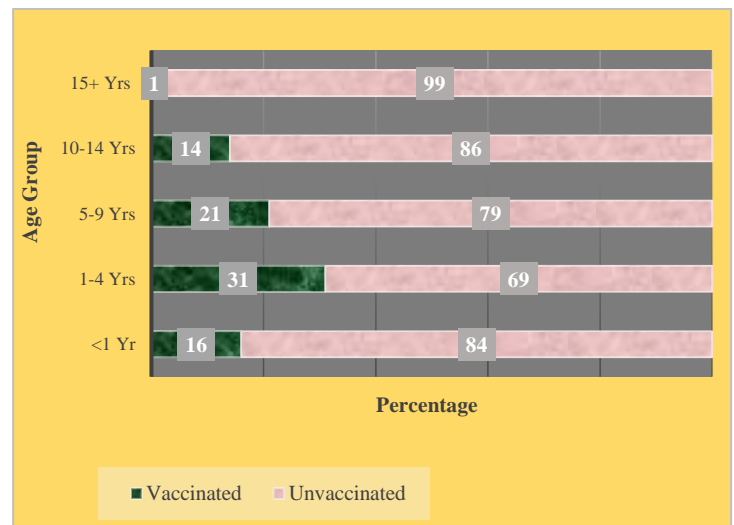


Table 2: Distribution of reported measles cases and deaths by age groups in South Sudan, 2024

Age Groups	2024				
	No. of Suspected Cases	No. of Confirmed Cases	%	Deaths	%
<1 yr	667	23	3.4	21	3.1
1-4 yrs	861	60	7.0	14	1.6
5-9 yrs	286	23	8.0	3	1.0
10-14 yrs	251	12	4.8	0	0.0
15+ yrs	206	28	13.6	1	0.5
<b>Total</b>	<b>2,271</b>	<b>146</b>	<b>6.4</b>	<b>39</b>	<b>1.7</b>

*Note: More than half 1,528 (67%) of all the suspected measles cases are children below 5 years of age. The case fatality rate is (1.7%) while 743 (33%) are among other ages from 5 years and above.*

Figure3: Percentage distribution of measles cases and their vaccination status: 2024



*Note: 1,802(79%) were unvaccinated (zero, unknown) including 1,155(64%) children less than 5 years. Among children less than one year old 667 cases, 557(84%) have not been vaccinated.*

### Surveillance and Laboratory

- Enhanced surveillance ongoing in silent counties
- Sample collection for all counties that last had a confirmed measles outbreak in the last four weeks to track the Measles epidemiology.
- Enhance surveillance for VPDs, especially at the points of entry for the refugees, returnees from Sudan, and in the silent counties
- Ensure weekly reporting (including zero dose reporting where applicable)



## Republic of South Sudan Measles Outbreak and Response Weekly Situation Update

### Case Management

- The MOH, WHO, and partners are intensifying measles case management (including vitamin A administration), surveillance, and risk communication in locations with suspected and confirmed outbreaks
- In collaboration with partners and MOH, WHO is prepositioning kits to support case management in counties with active outbreaks.

### Vaccinations

- The reactive campaign continued in 2024. As of Epi week 17, nine counties implemented the measles reactive campaign to vaccinate **347,812 (86%)** under five children. Final data from 5 counties of NBG is yet to be submitted. Out of the total vaccinated **9,119 (2.6%)** are returnees from Sudan
  - Four counties (Maridi, Mundri East, Tonj North, and Tonj South) completed the campaign.
  - Five counties of NBG (AWE, AWS, AWC, AWN and AWW) the campaign is still ongoing expected to be finalized next week.
- Preparation is ongoing for an additional five counties in WES (Yambio, Ezo, Nzara, Ibba, and Tambura). Implementation is scheduled for 7<sup>th</sup> May 2024. The main reason for the delay is multiple activities ongoing in the state (Yellow Fever mass vaccination, nOPV2 vaccination campaign, and COVID-19 vaccination activities in some counties)
  - Vaccine and dry supply already delivered to state Cold chain
  - Operational funds are disbursed to states and targeted counties for training, freezing ice packs, and transportation.
  - National supervisors from MOH deployed to support the state/county during implementation
- MOH has yet to secure additional doses of measles vaccine to cover other outbreak-affected counties. Four counties (Rumbek East, Wulu, Juba, and Yei) have reported confirmed outbreaks and submitted revised MPs for the response.
- MoH will work with identified partners to ensure quality campaigns
- POE/Temporary transit post-vaccination activities are ongoing in 13 sites of 7 states with Measles and OPV vaccines targeting children under fifteen years old
  - Operational fund is released to 7 counties to initiate the POE activities in 13 sites.
  - Vaccination activity started in transit posts in Akobo, Melut, Malakal, Aweil East, and Aweil North counties.
  - As of Epi week 17 a total of 7,711 and 7,407 children of under fifteen years vaccinated with Measles and OPV vaccine in 5 POE sites of Melut and Akobo.

### Demand Generation/ Communication

- Demand generation activities ongoing for the planned mop-up and reactive campaigns as well as routine immunization (radio talk shows and jingle broadcast)

### Operational challenges and gaps

- Inadequate detailed investigation of suspected measles cases and deaths in counties reporting suspected cases of measles
- Inadequate sample collection for laboratory confirmation and classification cases of suspected measles cases
- A high proportion of unvaccinated/unknown status children (80%) was detected among the cases, noting the inadequate quality of investigations and gaps in immunization, especially among the returnees and refugees.
- Late and constant retrospective reporting of suspected cases
- Incomplete and inaccurate filling of line lists and CIFs

### Way Forward

- Lab-confirmed outbreaks to be followed with detailed outbreak reports
- Root cause analysis planned and led by MOH
- MOH and partners to support the planned mop-up campaign and other measles activities
- State and County MOH to continue weekly reporting of measles cases (including zero reporting where applicable)



## Republic of South Sudan Measles Outbreak and Response Weekly Situation Update

- UNICEF will fill in the anticipated Measles vaccine rupture.
- Prompt detection and management of measles cases
- Addition of Vitamin A in future responses and inclusion of nutrition teams
- Blood samples to be collected from suspected cases in counties that continue to report, and the lab confirmation is beyond four weeks to monitor the epidemiology
- Collection of nasopharyngeal swaps from new cases
- Strengthen routine immunization at POEs and within the community
- Prioritize case management to reduce morbidity and mortality.
- Enhance risk communication and community engagement in health and help-seeking behavior.

### Appendix: Measles Reactive Vaccination (Jan to April 2024)

#	County	Target age group	Type of vaccination	Supporting Partner	Status of Implementation
1	Maridi	6 to 59 months	Reactive	WHO/Unicef	• Completed (Final data submitted)
2	Mundri East	6 to 59 months	Reactive	WHO/Unicef	• Completed (Final data submitted)
3	Tonj North	6 to 59 months	Reactive	WHO/Unicef	• Complete (Final data submitted)
4	Tonj South	6 to 59 months	Reactive	WHO/Unicef	• Complete (Final data submitted)
5	Aweil West	6 to 59 months	Reactive	WHO/Unicef	• Ongoing
6	Aweil North	6 to 59 months	Reactive	WHO/Unicef	• Ongoing
7	Aweil South	6 to 59 months	Reactive	WHO/Unicef	• Ongoing
8	Aweil Center	6 to 59 months	Reactive	WHO/Unicef	• Ongoing
9	Aweil East	6 to 59 months	Reactive	WHO/Unicef	• Ongoing

### Annex 1: Measles Reactive Vaccination Data from 4 counties, January to April 2024

County	Measles Target population (6 months to 14 years)					Status
	Target	Host	Returnee	Total	Coverage	
Maridi	24,025	25,858	80	25,938	108%	Complete
Mundri East	16,577	16,074	0	16,074	97%	Complete
Tonj North	63,216	72,714	0	72,714	115%	complete
Tonj South	25,913	24,118	0	24,118	93%	complete
Aweil West	58,672	49,509	3,004	52,513	90%	Partial
Aweil North	46,998	31,448	2,060	33,508	71%	Partial
Aweil South	29,871	25,564	9	25,573	86%	Partial
Aweil Center	30,548	34,652	20	34,672	113%	Partial
Aweil East	108,621	58,756	3,946	62,702	58%	Partial
<b>Total</b>	<b>404,441</b>	<b>338,693</b>	<b>9,119</b>	<b>347,812</b>	<b>86%</b>	



## Republic of South Sudan Measles Outbreak and Response Weekly Situation Update

### Annex 2:Phase II POE/Temporary Transit site Measles and OPV vaccination April 2024

State	County	POE Site	Measles				OPV			
			6 -11 months	12 - 59 months	6 - 14 Years	Total Vaccinated	0 – 11 months	12 - 59 months	6 - 14 Years	Total Vaccinated
Jonglei	Akobo	Akobo Hospital	1,190	1,423	1,228	<b>3,841</b>	1,705	1,426	1,228	<b>4,359</b>
		Old Akobo	890	1,274	1112	<b>3,276</b>	819	890	747	<b>2,456</b>
Upper Nile	Melut	Friendship	20	71	9	<b>100</b>	19	72	7	<b>98</b>
		Palouch PHCC	69	282	53	<b>404</b>	70	308	57	<b>435</b>
		Palouch PHCU	28	58	4	<b>90</b>	19	37	3	<b>59</b>
<b>Total</b>		<b>5</b>	<b>2,197</b>	<b>3,108</b>	<b>2,406</b>	<b>7,711</b>	<b>2,632</b>	<b>2,733</b>	<b>2,042</b>	<b>7,407</b>

Dr. John Rumunu Incident Manager E: <a href="mailto:ori.moiaga@gmail.com">ori.moiaga@gmail.com</a> P: +211 924 767 490	Dr. Joseph Lasu Emergency Preparedness & Response Director E: <a href="mailto:josh2013.lasu@gmail.com">josh2013.lasu@gmail.com</a> P: +211 921 395 440	South Sudan PHEOC E: <a href="mailto:ssphecc@gmail.com">ssphecc@gmail.com</a> P: +211 925 851 662/ +211 917 235 355	Dr Aggrey Bategereza EP&R TL, WHO E: <a href="mailto:bategerezaa@who.int">bategerezaa@who.int</a> P: +211 924222030
---	---	--	--

For more information, please contact above persons  
This report was prepared with technical support from World Health Organization, Juba.