

# Mpox Daily situation report

Situation update 09-January-2025 2300hrs



REPUBLIC OF UGANDA  
MINISTRY OF HEALTH

**65** New confirmed cases in the last 24 hours

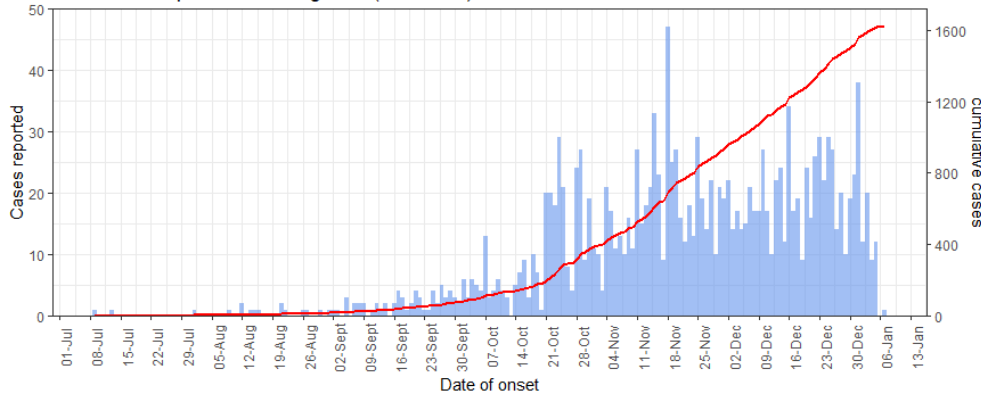
**1,712** Cumulative confirmed cases

**10** Cumulative deaths

**162** Active admissions

**1,169** Cumulative discharges

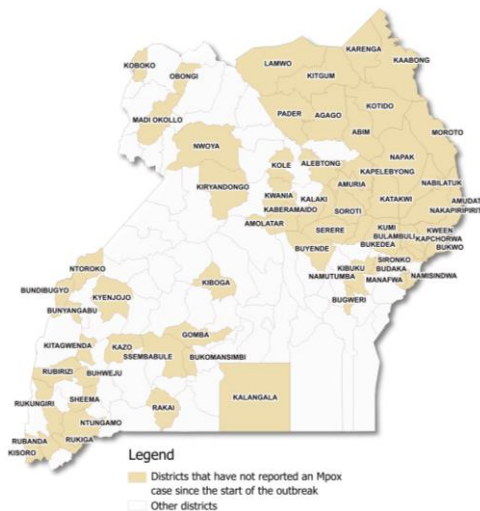
Cumulative Mpox cases in Uganda (n = 1,712)



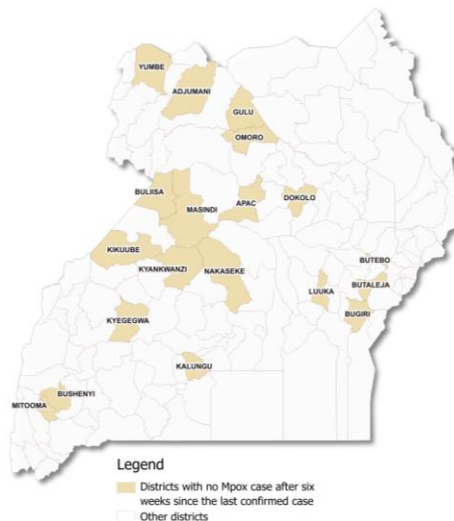
## Key Highlights

- **169** days since the start of the outbreak
- No new deaths, CFR **0.6%**
- New cases; Kampala (**46**), Mbarara (**09**), Wakiso (**07**), Luwero (**02**), Kiruhura (**01**)
- Majority of the cases are males **58%**
- The age group (19-39) are the most affected **65%**
- GKMA contributes **73%** of the total case load
- Adjumani district has moved to elimination phase (No person-to-person transmission in the last three months since the last case was reported)

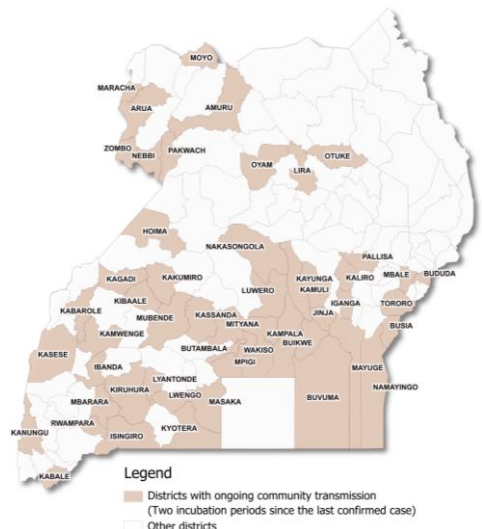
Districts with no Mpox case reported  
**(75)**



Districts in control phase  
**(19)**



Districts with active transmission  
**(52)**



## Districts that have reported more than 20 Mpox cases

District	total cases	attack rates per 100,000 population	days since last confirmed case
Kampala	948	<b>50</b>	1
Nakasongola	79	<b>35</b>	3
Mbarara	56	<b>13</b>	1
Wakiso	267	<b>8</b>	1
Luwero	43	<b>8</b>	1
Mayuge	27	<b>5</b>	30
Mukono	41	4	6

## Major activities

1. Weekly Incident management team coordination meeting (every Tuesday).
2. Partner engagement meeting (every Thursday).
3. Pillar specific meetings continue to happen weekly
4. Case investigations are being conducted for all positive cases
5. Case management bi-weekly webinars continue to happen
6. The RCCE pillar continues to analyse and leverage community feedback insights to generate messages.

Free Mpox alert SMS on **6767** starting with the 'ALERT' key word

People who have had Mpox should not be stigmatized but handled with compassion

Stay informed about Mpox outbreaks and follow public health guideline hotline numbers are: **0800100066** for Ministry of Health; **0800299000** for Kampala Metropolitan Area (All Toll Free)